

53: FUSELAGE

INTERCOSTAL – AFT CARGO BAY

ATA Chapter: 53-00



PRODUCT DESCRIPTION

Located between STA 827 and STA 847 in the Aft Cargo Bay. Primarily acts as a stiffening element to protect the surrounding structure from incidental damage

ATS PART NUMBER

146A7505U8ATSMRO

OEM PART NUMBER

146A7505-8

TECHNICAL SPECIFICATIONS

- FAA PMA PQ5315NM, Supplement 73.
- Equivalent in fit, form and function to OEM.
- Material: Aluminum Alloy

AIRCRAFT APPLICATION

Boeing 737-600/700/700C/900/900ER

WEB – AFT CARGO DOOR SURROUND

ATA Chapter: 53-00



PRODUCT DESCRIPTION

Sits under the Scuff Plate of the Aft Cargo Door. Primarily acts as a lower frame of the door and provides an attach point for the Scuff Plate, which protects the underlying structure from environmental effects

ATS PART NUMBER

146A8123U25ATSMRO

OEM PART NUMBER

146A8123-25
146A8123U25

TECHNICAL SPECIFICATIONS

- FAA PMA PQ5315NM, Supplement 73.
- Equivalent in fit, form and function to OEM.
- Material: Aluminum Alloy

AIRCRAFT APPLICATION

Boeing 737-700/700C/800/900ER/8/9

ANGLE – AFT CARGO DOOR SURROUND

ATA Chapter: 53-00



PRODUCT DESCRIPTION

Installs onto the Aft Cargo Door Sill Web to increase structural stability and stiffness of the assembly. Also provides additional attach points for the Scuff Plate

ATS PART NUMBER

146A8125U53ATSMRO

OEM PART NUMBER

146A8125-53

TECHNICAL SPECIFICATIONS

- FAA PMA PQ5315NM, Supplement 73.
- Equivalent in fit, form and function to OEM.
- Material: Aluminum Alloy

AIRCRAFT APPLICATION

Boeing 737-600/700/700C/800/900/900ER/8/9

53: FUSELAGE

SHIELD ASSEMBLY – AFT CARGO DOOR SURROUND

ATA Chapter: 53-00



PRODUCT DESCRIPTION

Installs above the Aft Cargo Door Sill Web/Angle. Primarily acts as a continuation of the Scuff Plate to provide additional environmental protection and to distribute cargo/personnel loading to avoid incidental flange bending of the underlying floor structure

ATS PART NUMBER

146A8127U5ATSMRO

OEM PART NUMBER

146A8127-5
146A8127Y5

TECHNICAL SPECIFICATIONS

- FAA PMA PQ5315NM, Supplement 73.
- Equivalent in fit, form and function to OEM.
- Material: Aluminum Alloy

AIRCRAFT APPLICATION

Boeing 737-600/700/700C/800/900

STRAP – AFT CARGO DOOR SURROUND

ATA Chapter: 53-00



PRODUCT DESCRIPTION

Component of the Aft Cargo Door larger Lower Main Sill Assembly and interfaces between the Scuff Plate and Sill Web. Primarily acts as a stiffening element along the Sill web

ATS PART NUMBER

146A8128U14ATSMRO

OEM PART NUMBER

146A8128-14
146A8128U14
146A8128Y14

TECHNICAL SPECIFICATIONS

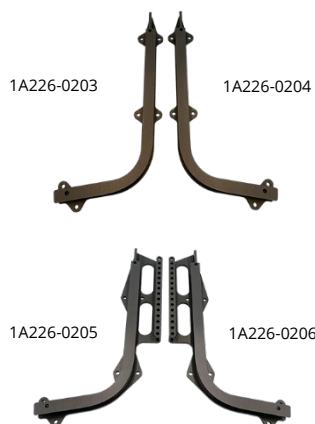
- FAA PMA PQ5315NM, Supplement 73.
- Equivalent in fit, form and function to OEM.
- Material: Aluminum Alloy

AIRCRAFT APPLICATION

Boeing 737-600/700/700C/800/900/900ER/8/9

FLIGHT DECK SEAT TRACKS

ATA Chapter: 53-10, 25-11



PRODUCT DESCRIPTION

Shorter lead time and less cost replacement parts for flight deck seat tracks as compared to OEM components

ATS PART NUMBER

1A226-0201ATSMRO / 1A226-0202ATSMRO
1A226-0203ATSMRO / 1A226-0204ATSMRO
1A226-0205ATSMRO / 1A226-0206ATSMRO
1A296-0339ATSMRO / 1A296-0340ATSMRO

OEM PART NUMBER

1A226-0201 / 1A226-0202
1A226-0203 / 1A226-0204
1A226-0205 / 1A226-0206
1A296-0339 / 1A296-0340

TECHNICAL SPECIFICATIONS

- FAA PMA PQ5315NM, Supplement 59
- Equivalent in fit, form and function to OEM

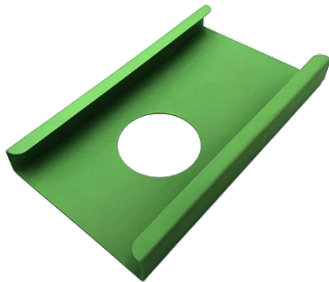
AIRCRAFT APPLICATION

Boeing 737-600/700/700C/800/900/900ER/8/9

53: FUSELAGE

CHANNEL - FLIGHT DECK

ATA Chapter: 53-10



PRODUCT DESCRIPTION

As a component of the flight compartment floor step assembly, the Channel provides support and attachment for a removable access panel which permits access for internal zonal inspections

ATS PART NUMBER

141A5211U1ATSMRO

OEM PART NUMBER

141A5211U1

TECHNICAL SPECIFICATIONS

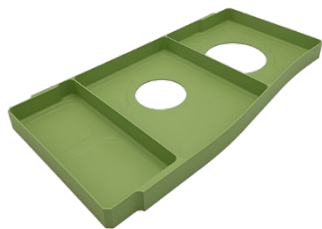
- FAA PMA PQ5315NM, Supplement 78.
- Equivalent in fit, form and function to OEM.
- Material: Aluminum Alloy

AIRCRAFT APPLICATION

Boeing 737-600/700/700C/800/900/900ER

INTERCOSTAL

ATA Chapter: 53-10



PRODUCT DESCRIPTION

The PMA article is located at BL 0, spanning the STA 344 to STA 360 floor beams the passenger cabin. It transfers loads into the floor beams and provides attachment and support for floor panels

ATS PART NUMBER

141A5410U23ATSMRO

OEM PART NUMBER

141A5410U23

TECHNICAL SPECIFICATIONS

- FAA PMA PQ5315NM, Supplement 105
- Equivalent in fit, form and function to OEM part

AIRCRAFT APPLICATION

Boeing 737-600/700/700C/800/900/900ER

INTERCOSTAL - SECTION 41

ATA Chapter: 53-10



PRODUCT DESCRIPTION

The Intercostals are located in the Section 41 cabin floor and function to stiffen the adjacent floor structure and support floor panels

ATS PART NUMBER

141A5410U139ATSMRO
141A5410U141ATSMRO

OEM PART NUMBER

141A5410U139
141A5410U141

TECHNICAL SPECIFICATIONS

- FAA PMA PQ5315NM, Supplement 101
- Equivalent in fit, form and function to OEM part

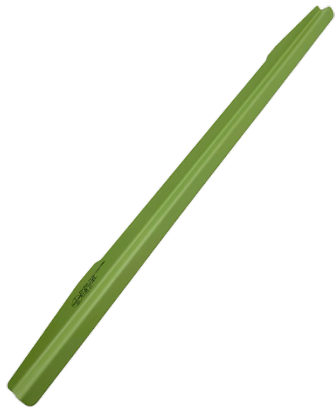
AIRCRAFT APPLICATION

Boeing 737-600/700/700C/800/900/900ER/
8/9/8200

53: FUSELAGE

CHORD – ZEE, FORWARD ENTRY DOOR SILL

ATA Chapter: 53-10



PRODUCT DESCRIPTION

Formed stiffener installed on the Lower Main Sill web of Forward Entry Door, as component of the Section 41 Door Surround Structure. The Zee Chord primarily function as a support and attachment point for the Center Scuff Plate with Lower Sill web

ATS PART NUMBER

141A8112U2ATSMRO

OEM PART NUMBER

141A8112-2

TECHNICAL SPECIFICATIONS

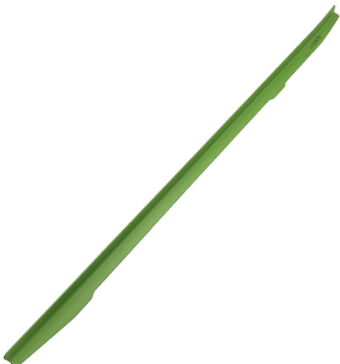
- FAA PMA PQ5315NM, Supplement 62.
- Equivalent in fit, form and function to OEM.
- Material: Aluminum Alloy

AIRCRAFT APPLICATION

Boeing 737-600/700/700C/800/900/900ER/8/9

ANGLE – FORWARD ENTRY DOOR SILL

ATA Chapter: 53-10



PRODUCT DESCRIPTION

Formed stiffener installed on the Lower Main Sill web of Forward Entry Door, as component of the Section 41 Door Surround Structure. The Zee Chord primarily function as a support and attachment point for the Center Scuff Plate with Lower Sill web

ATS PART NUMBER

141A8112U20ATSMRO

OEM PART NUMBER

141A8112-20

TECHNICAL SPECIFICATIONS

- FAA PMA PQ5315NM, Supplement 62.
- Equivalent in fit, form and function to OEM.
- Material: Aluminum Alloy

AIRCRAFT APPLICATION

Boeing 737-600/700/700C/800/900/900ER/8/9

ANGLE – FORWARD ENTRY DOOR SILL

ATA Chapter: 53-10

PRODUCT DESCRIPTION

Formed stiffener installed on the Lower Main Sill web of Galley Door, as component of the Section 41 Door Surround Structure. The Zee Chord primarily function as a support and attachment point for the Center Scuff Plate with Lower Sill web

ATS PART NUMBER

141A8312U5ATSMRO

OEM PART NUMBER

141A8312-5
141A8312Y5

TECHNICAL SPECIFICATIONS

- FAA PMA PQ5315NM, Supplement 62.
- Equivalent in fit, form and function to OEM.
- Material: Aluminum Alloy

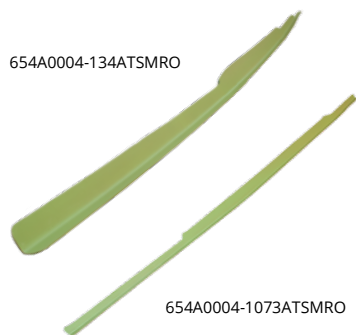
AIRCRAFT APPLICATION

Boeing 737-600/700/700C/800/900/900ER/8/9

53: FUSELAGE

INNER CHORD – GALLERY DOOR MOPSILL

ATA Chapter: 53-10



PRODUCT DESCRIPTION

Components of Section 41 Door Surround Structure

ATS PART NUMBER

654A0004-134ATSMRO
654A0004-1073ATSMRO

OEM PART NUMBER

654A0004-134
654A0004-1073

TECHNICAL SPECIFICATIONS

- FAA PMA PQ5315NM, Supplement 54
- Equivalent in fit, form and function to OEM part
- Current OEM ICA information is applicable to parts

AIRCRAFT APPLICATION

Boeing 737-600/700/800/900/900ER/8/9

PANEL, REMOVABLE – FLIGHT DECK

ATA Chapter: 53-10



PRODUCT DESCRIPTION

As a component of the flight compartment floor, the removable panel permits access for internal zonal inspections. In addition, the panel acts as a floor web in the crew area

ATS PART NUMBER

141A5133U15ATSMRO

OEM PART NUMBER

141A5133U15

TECHNICAL SPECIFICATIONS

- FAA PMA PQ5315NM, Supplement 78.
- Equivalent in fit, form and function to OEM.
- Material: Aluminum Alloy

AIRCRAFT APPLICATION

Boeing 737-600/700/700C/800/900/900ER/8/9

INTERCOSTAL, LAV A SUPPORT

ATA Chapter: 53-10



PRODUCT DESCRIPTION

Spans between floor beams to stiffen the floor structure. Supports one of four lavatory A floor fitting attach points

ATS PART NUMBER

141A5690U1ATSMRO

OEM PART NUMBER

141A5690-1
141A5690U1
141A5690Y1

TECHNICAL SPECIFICATIONS

- FAA PMA PQ5315NM, Supplement 80
- Equivalent in fit, form and function to OEM part

AIRCRAFT APPLICATION

Boeing 737-600/700/700C/800/900/900ER

53: FUSELAGE

GUIDE TRACK ASSEMBLY – FWD ENTRY DOOR, STA 348.2

ATA Chapter: 53-11, 52-11



PRODUCT DESCRIPTION

Interfaces with the fwd entry door-side ball guide to ensure door is properly located during open/close

ATS PART NUMBER

141A6206-2ATSMRO

OEM PART NUMBER

141A6206-2

TECHNICAL SPECIFICATIONS

- FAA PMA PQ5315NM, Supplement 81
- Equivalent in fit, form and function to OEM assembly

AIRCRAFT APPLICATION

Boeing 737-600/700/800/900/900ER/8/9

BRACKET ASSEMBLY – STA 727 BULKHEAD

ATA Chapter: 53-11



PRODUCT DESCRIPTION

Located on the STA 727 Wheel Well Bulkhead and provides support for the 453A1210-() Shroud

ATS PART NUMBER

144A9401U20ATSMRO

OEM PART NUMBER

144A9401U20

TECHNICAL SPECIFICATIONS

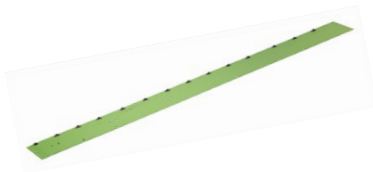
- FAA PMA PQ5315NM, Supplement 78.
- Equivalent in fit, form and function to OEM.
- Material: Clad Aluminum Sheet

AIRCRAFT APPLICATION

Boeing 737-600/700/700C/800/900/900ER/8/9

AFT REVEAL ASSEMBLY

ATA Chapter: 53-11



PRODUCT DESCRIPTION

Component of the Aft Cargo Door Surround Structure. Primary function is to hold a section of the lining of the cargo compartment in place

ATS PART NUMBER

146A9403-237ATSMRO

OEM PART NUMBER

146A9403-237

TECHNICAL SPECIFICATIONS

- FAA PMA PQ5315NM, Supplement 15
- Equivalent in fit, form and function to OEM assembly
- Aluminum material

AIRCRAFT APPLICATION

Boeing 737-600/700/700C/800/900/900ER/8/9

53: FUSELAGE

FITTING – AFT DOOR, STA 992.8

ATA Chapter: 53-11, 52-11



PRODUCT DESCRIPTION

Interfaces with the aft entry and galley door-side ball guide to ensure door is properly located during open/close

ATS PART NUMBER

654A0004-24ATSMRO

OEM PART NUMBER

654A0004-24
147A6158-1

TECHNICAL SPECIFICATIONS

- FAA PMA PQ5315NM, Supplement 81
- Equivalent in fit, form and function to OEM part

AIRCRAFT APPLICATION

Boeing 737-600/700/700C/800/900/900ER/8/9

FITTING – GALLEY DOOR, STA 328

ATA Chapter: 53-11, 52-11



PRODUCT DESCRIPTION

Interfaces with the fwd galley door-side ball guide to ensure door is properly located during open/close

ATS PART NUMBER

654A0004-28ATSMRO

OEM PART NUMBER

654A0004-28
141A6557-1

TECHNICAL SPECIFICATIONS

- FAA PMA PQ5315NM, Supplement 81
- Equivalent in fit, form and function to OEM part

AIRCRAFT APPLICATION

Boeing 737-600/700/700C/800/900/900ER/8/9

FILLER – STA 796, AFT CARGO DOOR

ATA Chapter: 53-13, 51-00



PRODUCT DESCRIPTION

Function as a ramp in the upper corners of the scuff plates to the doorway to give a smooth transition for the door seal

ATS PART NUMBER

146A8344-1ATSMRO

OEM PART NUMBER

146A8344-1

TECHNICAL SPECIFICATIONS

- FAA PMA PQ5315NM, Supplement 65
- Equivalent in fit, form and function to OEM part

AIRCRAFT APPLICATION

Boeing 737-600/700/700C/800/900/900ER/8/9

53: FUSELAGE

FILLER – STA 846, AFT CARGO DOOR

ATA Chapter: 53-13, 51-00



PRODUCT DESCRIPTION

Function as a ramp in the upper corners of the scuff plates to the doorway to give a smooth transition for the door seal

ATS PART NUMBER

146A8344-2ATSMRO

OEM PART NUMBER

146A8344-2

TECHNICAL SPECIFICATIONS

- FAA PMA PQ5315NM, Supplement 65
- Equivalent in fit, form and function to OEM part

AIRCRAFT APPLICATION

Boeing 737-600/700/700C/800/900/900ER/8/9

STIFFENER – WATER SERVICE PANEL, AFT CARGO COMPARTMENT

ATA Chapter: 53-13, 52-49



PRODUCT DESCRIPTION

Located between STA 907 and STA 927 and mounts to the supporting intercostals to provide additional stiffness to the water tank service panel support structure.

ATS PART NUMBER

147A7221Y32ATSMRO

OEM PART NUMBER

147A7221Y32

TECHNICAL SPECIFICATIONS

- FAA PMA PQ5315NM, Supplement 69.
- Equivalent in fit, form and function to OEM.
- Material: Aluminum Alloy

AIRCRAFT APPLICATION

Boeing 737-600/700/700C/800/900/900ER/8/9

ANGLE, FLOOR BOARD & CHORD – UPPER

ATA Chapter: 53-30



143A5410-170ATSMRO

143A5410U174ATSMRO

PRODUCT DESCRIPTION

The Angle is located in the Section 43 main deck floor structure, and stiffens the adjacent floor structure while providing a means of attachment for the floor panels.

The Upper Chord is located in the Section 43 main deck floor structure, and stiffens the adjacent floor structure while providing a means of attachment for the floor panels

ATS PART NUMBER

Angle, Floor Board

143A5410-170ATSMRO

Chord – Upper

143A5410U174ATSMRO

OEM PART NUMBER

143A5410-170

143A5410U174

TECHNICAL SPECIFICATIONS

- FAA PMA PQ5315NM, Supplement 107
- Equivalent in fit, form and function to OEM part

AIRCRAFT APPLICATION

Boeing 737-700/800/8

53: FUSELAGE

SIDEPLATE CHANNEL ASSEMBLY – CARGO FLOOR SUPPORT, SECTION 43

ATA Chapter: 53-30



PRODUCT DESCRIPTION

Component of the Forward Cargo Compartment floor structure. Primarily provides a means of retention for the cargo compartment floor and sidewall panels

ATS PART NUMBER

143A7501U186ATSMRO

OEM PART NUMBER

143A7501U186

TECHNICAL SPECIFICATIONS

- FAA PMA PQ5315NM, Supplement 70.
- Equivalent in fit, form and function to OEM.
- Material: Aluminum Alloy

AIRCRAFT APPLICATION

Boeing 737-700/700C

CHANNEL ASSEMBLY – FWD CARGO FLOOR

ATA Chapter: 53-30



PRODUCT DESCRIPTION

The Channel Assy is located in the FWD Cargo Compartment and provides a means of attachment between the floor and sidewall panels in Section 43

ATS PART NUMBER

143A7501U188ATSMRO

OEM PART NUMBER

143A7501U188

TECHNICAL SPECIFICATIONS

- FAA PMA PQ5315NM, Supplement 121
- Equivalent in fit, form and function to OEM part

AIRCRAFT APPLICATION

Boeing 737-800/8

53: FUSELAGE

CLIP – CARGO FLOOR

ATA Chapter: 53-30, 53-42



PRODUCT DESCRIPTION

The Clips are a component of the Section 43 Cargo Floor Support Installation and attach outboard baffle assemblies to various frames

ATS PART NUMBER

143A7502U159ATSMRO
143A7502U160ATSMRO

OEM PART NUMBER

143A7502U159
143A7502U160

TECHNICAL SPECIFICATIONS

- FAA PMA PQ5315NM, Supplement 90
- Equivalent in fit, form, and function to OEM assembly

AIRCRAFT APPLICATION

Boeing 737-600/700/700C/800/900ER/8/9/8200

BAFFLE ASSEMBLY – FORWARD CARGO FLOOR

ATA Chapter: 53-30



PRODUCT DESCRIPTION

Components of the forward cargo compartment floor structure. Primary function is to add stiffness to the sideplate channels between the fuselage frames and provide a means of retention for the cargo compartment sidewall liners

ATS PART NUMBER

143A7510-9ATSMRO

OEM PART NUMBER

143A7510-9

TECHNICAL SPECIFICATIONS

- FAA PMA PQ5315NM, Supplement 76.
- Equivalent in fit, form and function to OEM.
- Material: Aluminum

AIRCRAFT APPLICATION

Boeing 737-600/700/700C/800/900/900ER/8/9

BAFFLE ASSEMBLY – FORWARD CARGO FLOOR

ATA Chapter: 53-30



PRODUCT DESCRIPTION

Components of the forward cargo compartment floor structure. Primary function is to add stiffness to the sideplate channels between the fuselage frames and provide a means of retention for the cargo compartment sidewall liners.

ATS PART NUMBER

143A7510-15ATSMRO

OEM PART NUMBER

143A7510-15

TECHNICAL SPECIFICATIONS

- FAA PMA PQ5315NM, Supplement 76.
- Equivalent in fit, form and function to OEM.
- Material: Aluminum

AIRCRAFT APPLICATION

Boeing 737-700/700C

53: FUSELAGE

BAFFLE ASSEMBLY – FORWARD CARGO FLOOR

ATA Chapter: 53-30



PRODUCT DESCRIPTION

Components of the forward cargo compartment floor structure. Primary function is to add stiffness to the sideplate channels between the fuselage frames and provide a means of retention for the cargo compartment sidewall liners.

ATS PART NUMBER

143A7510-21ATSMRO

OEM PART NUMBER

143A7510-21

TECHNICAL SPECIFICATIONS

- FAA PMA PQ5315NM, Supplement 76.
- Equivalent in fit, form and function to OEM.
- Material: Aluminum

AIRCRAFT APPLICATION

Boeing 737-800/900/900ER/8/9

BAFFLE ASSEMBLY – FORWARD CARGO FLOOR

ATA Chapter: 53-30



PRODUCT DESCRIPTION

Components of the forward cargo compartment floor structure. Primary function is to add stiffness to the sideplate channels between the fuselage frames and provide a means of retention for the cargo compartment sidewall liners.

ATS PART NUMBER

143A7510-22ATSMRO

OEM PART NUMBER

143A7510-22

TECHNICAL SPECIFICATIONS

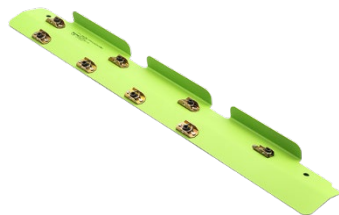
- FAA PMA PQ5315NM, Supplement 76.
- Equivalent in fit, form and function to OEM.
- Material: Aluminum

AIRCRAFT APPLICATION

Boeing 737-800/900/900ER/8/9

SHIELD ASSEMBLY

ATA Chapter: 53-30



PRODUCT DESCRIPTION

Attachment points for floor and sidewall panels of the forward cargo bay

ATS PART NUMBER

143A8126U21ATSMRO

OEM PART NUMBER

143A8126U21

TECHNICAL SPECIFICATIONS

- FAA PMA PQ5315NM, Supplement 34
- Equivalent in fit, form and function to OEM assembly
- 143A8126U21ATSMRO installs forward of the forward cargo bay door

AIRCRAFT APPLICATION

Boeing 737-700/700C/800/900/900ER/8/9

53: FUSELAGE

SHIELD ASSEMBLY

ATA Chapter: 53-30



PRODUCT DESCRIPTION

Attachment points for floor and sidewall panels of the forward cargo bay

ATS PART NUMBER

143A8126U31ATSMRO

OEM PART NUMBER

143A8126U31

TECHNICAL SPECIFICATIONS

- FAA PMA PQ5315NM, Supplement 34
- Equivalent in fit, form and function to OEM assembly
- 143A8126U31ATSMRO installs aft of the forward cargo bay door

AIRCRAFT APPLICATION

Boeing 737-700/700C

SHIELD ASSEMBLY

ATA Chapter: 53-30

PRODUCT DESCRIPTION

The Shield Assy provides a means of retention for the cargo compartment floor panels and sidewall liners

ATS PART NUMBER

143A8126Y38ATSMRO

OEM PART NUMBER

143A8126-38

TECHNICAL SPECIFICATIONS

- FAA PMA PQ5315NM, Supplement 91
- Equivalent in fit, form, and function to OEM assembly

AIRCRAFT APPLICATION

Boeing 737-800/900ER/8/9/8200

SCUFF PLATE - FORWARD CARGO DOOR

ATA Chapter: 53-30



PRODUCT DESCRIPTION

Components of the cargo doorway lower main sill. Primarily designed to resist impact damage from cargo and protect underlying structure from environmental effects.

ATS PART NUMBER

143A8333-8ATSMRO

OEM PART NUMBER

143A8333-8

TECHNICAL SPECIFICATIONS

- FAA PMA PQ5315NM, Supplement 75.
- Equivalent in fit, form and function to OEM.
- Material: Titanium

AIRCRAFT APPLICATION

Boeing 737-600/700/700C/800/900/900ER/8/9

53: FUSELAGE

AFT REVEAL ASSEMBLY – FORWARD CARGO DOOR SURROUND

ATA Chapter: 53-30



PRODUCT DESCRIPTION

Consists of a flat sheet of aluminum with nutplates and a strip of Skyflex tape to provide a seal at the frame inner chord installation. Primarily acts as a scuff plate to protect the aft edge of the Forward Cargo Door Surround from cargo damage.

ATS PART NUMBER

143A9403U188ATSMRO

OEM PART NUMBER

143A9403-188
143A9403U188
143A9403Y188

TECHNICAL SPECIFICATIONS

- FAA PMA PQ5315NM, Supplement 72.
- Equivalent in fit, form and function to OEM.
- Material: Aluminum Alloy

AIRCRAFT APPLICATION

Boeing 737-600/700/700C/800/900/900ER/8/9

CLIP – BULKHEAD SUPPORT

ATA Chapter: 53-30



PRODUCT DESCRIPTION

The PMA article is a component of the Fwd Cargo Compartment, Aft Bulkhead structure. It functions to support the Aft Bulkhead structure by connecting the frame of the Bulkhead to the left and right Rail Assys. These in turn provide a means for the Bulkhead Panel attachment

ATS PART NUMBER

143A9485U21ATSMRO

OEM PART NUMBER

143A9485U21

TECHNICAL SPECIFICATIONS

- FAA PMA PQ5315NM, Supplement 105
- Equivalent in fit, form and function to OEM part

AIRCRAFT APPLICATION

Boeing 737-700/800/900ER/8/9

DOOR ASSEMBLY – FWD FAIRING ACCESS

ATA Chapter: 53-30, 52-49, 53-51



PRODUCT DESCRIPTION

The Door Assembly is located between STA 520 and STA 540 on the belly of the aircraft, and provides access to the ground conditioned air connector.

ATS PART NUMBER

149A7148-23ATSMRO

OEM PART NUMBER

149A7148-23

TECHNICAL SPECIFICATIONS

- FAA PMA PQ5315NM, Supplement 85.
- Equivalent in fit, form, and function to OEM assembly

AIRCRAFT APPLICATION

Boeing 737-700/700C/800/900ER/8/9

53: FUSELAGE

CAPSTRIP – FWD CARGO FLOOR

ATA Chapter: 53-30



PRODUCT DESCRIPTION

Forward cargo bay floor-to-sidewall capstrips

ATS PART NUMBER

453A1611-6ATSMRO
453A1611-9ATSMRO
453A1611-10ATSMRO
453A1611-11ATSMRO
453A1611-12ATSMRO

OEM PART NUMBER

453A1611-6
453A1611-9
453A1611-10
453A1611-11
453A1611-12

TECHNICAL SPECIFICATIONS

- FAA PMA PQ5315NM, Supplement 95
- Equivalent in fit, form and function to OEM part

AIRCRAFT APPLICATION

453A1611-6ATSMRO:

Boeing 737-700/800/900/900ER

453A1611-9ATSMRO:

Boeing 737-600/700/700C/800/900/900ER/
8/9/8200

453A1611-10ATSMRO:

Boeing 737-700/700C

453A1611-11ATSMRO:

Boeing 737-700/700C

453A1611-12ATSMRO:

Boeing 737-700/700C

53: FUSELAGE

CAPSTRIP

ATA Chapter: 53-30, 25-52



PRODUCT DESCRIPTION

The Capstrips are located in the Fwd Cargo Compartment and fasten to floor panels and sidewall liners. They function to close out gaps, assisting in fire containment and preventing debris accumulation below the floor panels

ATS PART NUMBER

453A1611-14ATSMRO
453A1611-16ATSMRO
453A1611-17ATSMRO
453A1611-30ATSMRO
453A1611-31ATSMRO

OEM PART NUMBER

453A1611-14
453A1611-16
453A1611-17
453A1611-30
453A1611-31

TECHNICAL SPECIFICATIONS

- FAA PMA PQ5315NM, Supplement 99
- Equivalent in fit, form and function to OEM part

AIRCRAFT APPLICATION

453A1611-14ATSMRO:
Boeing 737-800/900/900ER/8/9

453A1611-16ATSMRO:
Boeing 737-800/8

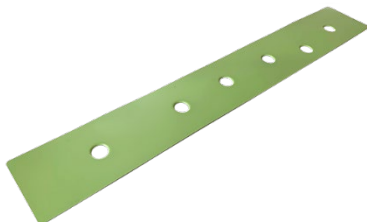
453A1611-17ATSMRO:
Boeing 737-800/8

453A1611-30ATSMRO:
Boeing 737-800/900/900ER/8/9

453A1611-31ATSMRO:
Boeing 737-800/900/900ER/8/9

WEB - FWD CARGO DOOR SILL

ATA Chapter: 53-30



PRODUCT DESCRIPTION

Component of Section 43 Door Surround Structure

ATS PART NUMBER

654A0003-58ATSMRO

OEM PART NUMBER

654A0003-58

TECHNICAL SPECIFICATIONS

- FAA PMA PQ5315NM, Supplement 55
- Equivalent in fit, form and function to OEM part
- Current OEM ICA information is applicable to parts

AIRCRAFT APPLICATION

Boeing 737-600/700/700C/800/900/900ER/8/9

53: FUSELAGE

SEAT TRACK – SECTIONS 43

ATA Chapter: 53-30



PRODUCT DESCRIPTION

Provides a means of attachment for passenger seats

ATS PART NUMBER

654A0004-77ATSMRO
143A5310-54ATSMRO

OEM PART NUMBER

654A0004-77
143A5310-54

TECHNICAL SPECIFICATIONS

- FAA PMA PQ5315NM, Supplement 55
- Equivalent in fit, form and function to OEM part
- Current OEM ICA information is applicable to parts

AIRCRAFT APPLICATION

Boeing 737-700

SEAT TRACK – SECTIONS 43

ATA Chapter: 53-30



PRODUCT DESCRIPTION

Provides a means of attachment for passenger seats

ATS PART NUMBER

654A0004-776ATSMRO
143A5310-52ATSMRO
143A5310-109ATSMRO

OEM PART NUMBER

654A0004-776, 143A5310-51
143A5310-52
143A5310-109

TECHNICAL SPECIFICATIONS

- FAA PMA PQ5315NM, Supplement 55
- Equivalent in fit, form and function to OEM part
- Current OEM ICA information is applicable to parts

AIRCRAFT APPLICATION

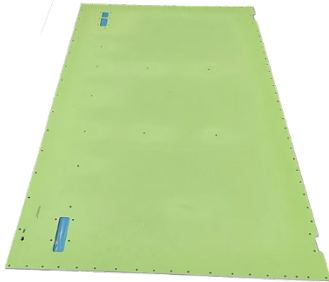
Boeing 737-700/800/900/900ER/8/9

53: FUSELAGE

PANEL – FLOOR, FWD CARGO COMPARTMENT

ATA Chapter: 53-30

453A1610-16ATSPMA



PRODUCT DESCRIPTION

The Floor Panels are located in the FWD Cargo Compartment. They support cargo/baggage loads, protect the underlying floor structure, and provide an effective fire barrier

TECHNICAL SPECIFICATIONS

- FAA PMA PQ5315NM, Supplement 134
- Equivalent in fit, form and function to OEM part

ATS PART NUMBER

453A1610-16ATSPMA
453A1610-20ATSPMA

AIRCRAFT APPLICATION

Boeing 737-800/8

453A1610-20ATSPMA



OEM PART NUMBER

453A1610-16
453A1610-20

53: FUSELAGE

RAIL ASSEMBLIES

ATA Chapter: 53-35



PRODUCT DESCRIPTION

The Rail Assemblies are located in the Forward Cargo Bay and provide support for the STA 500D Bulkhead. In addition, the Rails act as a fire barrier and close out the cargo bay from the wingbox

ATS PART NUMBER

143A9485U30ATSMRO
143A9485U34ATSMRO
143A9485U35ATSMRO

OEM PART NUMBER

143A9485U30
143A9485U34
143A9485U35

TECHNICAL SPECIFICATIONS

- FAA PMA PQ5315NM, Supplement 86
- Equivalent in fit, form and function to OEM part

AIRCRAFT APPLICATION

143A9485U30ATSMRO:

Boeing 737-600/700/700C

143A9485U34ATSMRO &

143A9485U35ATSMRO:

Boeing 737-600/700/700C/800/900/900ER/8/9



SEAT TRACK – SECTIONS 44

ATA Chapter: 53-40



PRODUCT DESCRIPTION

Provides a means of attachment for passenger seats

ATS PART NUMBER

144A5350-1ATSMRO
144A5350-3ATSMRO

OEM PART NUMBER

144A5350-1
144A5350-3

TECHNICAL SPECIFICATIONS

- FAA PMA PQ5315NM, Supplement 47
- Equivalent in fit, form and function to OEM part
- Current OEM ICA information is applicable to parts

AIRCRAFT APPLICATION

144A5350-1ATSMRO:

Boeing 737-600/700/700C/800/900/900ER/8/9

144A5350-3ATSMRO:

Boeing 737-600/700

53: FUSELAGE

ISOLATOR - SIDEWALL

ATA Chapter: 53-40

144A9451-3ATSMRO



144A9451-4ATSMRO



144A9451-5ATSMRO



PRODUCT DESCRIPTION

Isolators function as an attachment point for the sidewall panels.

ATS PART NUMBER

144A9451U3ATSMRO
144A9451U4ATSMRO
144A9451U5ATSMRO

OEM PART NUMBER

144A9451-3, 144A9451Y3, 144A9451U3
144A9451-4, 144A9451Y4, 144A9451U4
144A9451-5, 144A9451Y5, 144A9451U5

TECHNICAL SPECIFICATIONS

- FAA PMA PQ5315NM, Supplement 51
- Equivalent in fit, form and function to OEM part
- Current OEM ICA information is applicable to parts

AIRCRAFT APPLICATION

Boeing 737-600/700/700C/800/900/900ER/8/9

FRAME – ECS SUPPORT

ATA Chapter: 53-40



PRODUCT DESCRIPTION

ECS Support Frame supports the RAM Air Exhaust Duct Panel just aft of the main LH and RH ECS bay doors

ATS PART NUMBER

149A7214-19ATSMRO

OEM PART NUMBER

149A7214-19

TECHNICAL SPECIFICATIONS

- FAA PMA PQ5315NM, Supplement 58
- Equivalent in fit, form and function to OEM part
- 149A7214-20ATSMRO opposite to 149A7214-19ATSMRO

AIRCRAFT APPLICATION

Boeing 737-700/700C/800/900ER

53: FUSELAGE

FRAME – ECS SUPPORT

ATA Chapter: 53-40



PRODUCT DESCRIPTION

ECS Support Frame supports the RAM Air Exhaust Duct Panel just aft of the main LH and RH ECS bay doors

ATS PART NUMBER

149A7214-20ATSMRO

OEM PART NUMBER

149A7214-20

TECHNICAL SPECIFICATIONS

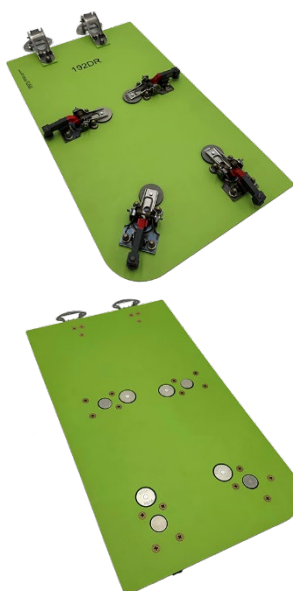
- FAA PMA PQ5315NM, Supplement 58
- Equivalent in fit, form and function to OEM part
- 149A7214-20ATSMRO opposite to 149A7214-19ATSMRO

AIRCRAFT APPLICATION

Boeing 737-700/700C/800/900ER

DOOR ASSEMBLY – HIGH PRESSURE AIR CONNECT

ATA Chapter: 53-40, 52-48



PRODUCT DESCRIPTION

Located at STA 540, RBL 14, the Door Assy is a component of the lower wing-to-body fairing skin panel. During maintenance it gives access to connect an external source of compressed air to the Pneumatic Manifold

ATS PART NUMBER

149A7241-9ATSMRO

OEM PART NUMBER

149A7241-9

TECHNICAL SPECIFICATIONS

- FAA PMA PQ5315NM, Supplement 96
- Equivalent in fit, form and function to OEM part

AIRCRAFT APPLICATION

Boeing 737-700/700C/800/900ER/8/9/8200

53: FUSELAGE

TIE DOWN ASSEMBLY – LH FWD ENTRY DOOR

ATA Chapter: 53-42, 25-66



141A5220-2ATSMRO, STA 312



141A5220-4ATSMRO, STA 344

PRODUCT DESCRIPTION

Attached to the floor structure located at the LH Fwd Entry Door to secure the Escape Slide during emergency evacuation

ATS PART NUMBER

141A5220-2ATSMRO
141A5220-4ATSMRO

OEM PART NUMBER

141A5220-2
141A5220-4

TECHNICAL SPECIFICATIONS

- FAA PMA PQ5315NM, Supplement 53
- Equivalent in fit, form and function to OEM part
- Current OEM ICA information is applicable to parts

AIRCRAFT APPLICATION

141A5220-2ATSMRO:

Boeing 737-600/700/700C/800/900/900ER/8/9

141A5220-4ATSMRO:

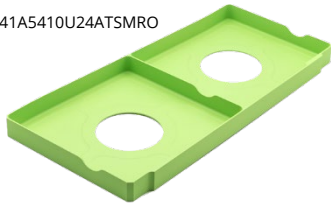
Boeing 737-600/700/800/900/900ER/8/9

53: FUSELAGE

INTERCOSTAL – FLOOR STABILIZER

ATA Chapter: 53-42

141A5410U24ATSMRO



PRODUCT DESCRIPTION

Support the floor panels

ATS PART NUMBER

141A5410U24ATSMRO
141A5410U25ATSMRO
141A5410U146ATSMRO
141A5410U148ATSMRO
141A5410U150ATSMRO

OEM PART NUMBER

141A5410U24
141A5410U25
141A5410U146
141A5410U148
141A5410U150

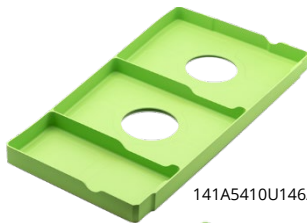
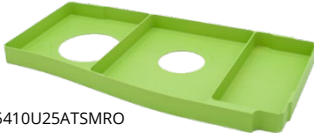
TECHNICAL SPECIFICATIONS

- FAA PMA PQ5315NM, Supplement 43
- Equivalent in fit, form and function to OEM parts
- Current OEM ICA information is applicable to parts

AIRCRAFT APPLICATION

Boeing 737-600/700/800/900/900ER/8/9

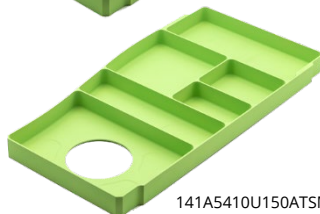
141A5410U25ATSMRO



141A5410U146ATSMRO



141A5410U148ATSMRO



141A5410U150ATSMRO

INTERCOSTAL – FLOOR STABILIZER

ATA Chapter: 53-42

141A5410U140ATSMRO



PRODUCT DESCRIPTION

Support the floor panels

ATS PART NUMBER

141A5410U140ATSMRO
141A5410U149ATSMRO

OEM PART NUMBER

141A5410-12, 141A5410-140, 141A5410Y140,
141A5410U140
141A5410-17, 141A5410-149, 141A5410Y149,
141A5410U149

TECHNICAL SPECIFICATIONS

- FAA PMA PQ5315NM, Supplement 52
- Equivalent in fit, form and function to OEM parts
- Current OEM ICA information is applicable to parts

AIRCRAFT APPLICATION

141A5410U140ATSMRO:

Boeing 737-600/700/700C/800/900/900ER/8/9

141A5410U149ATSMRO:

Boeing 737-600/700/800/900/900ER/8/9



141A5410U149ATSMRO



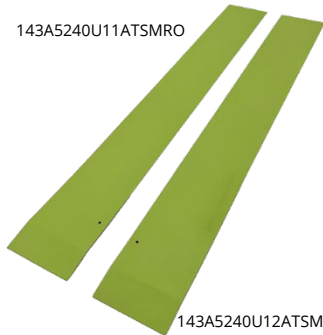
Trusted Partners
Supporting Flight

53: FUSELAGE

PLATE AND PANEL

ATA Chapter: 53-42

143A5240U11ATSMRO



143A5240U12ATSMRO

143A5240U33ATSMRO



143A5240U34ATSMRO

PRODUCT DESCRIPTION

The **Plate** and **Panel** are located at STA 537.45 and are a component of the Panel Break Assy, which supports floor panels in the passenger cabin

ATS PART NUMBER

Plate

143A5240U11ATSMRO
143A5240U12ATSMRO

Panel

143A5240U33ATSMRO
143A5240U34ATSMRO

OEM PART NUMBER

Plate

143A5240U11
143A5240U12

Panel

143A5240U33
143A5240U34

TECHNICAL SPECIFICATIONS

- FAA PMA PQ5315NM, Supplement 116
- Equivalent in fit, form and function to OEM part

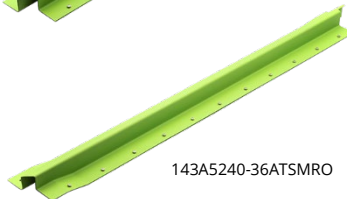
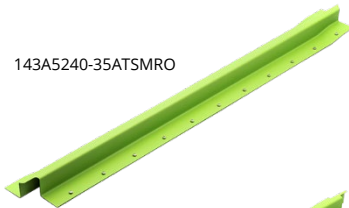
AIRCRAFT APPLICATION

Boeing 737-600/700/800/900/900ER/8/9

FLOOR PANEL BREAK ASSEMBLY

ATA Chapter: 53-42

143A5240-35ATSMRO



143A5240-36ATSMRO

PRODUCT DESCRIPTION

Provides support for floor panels located in the passenger cabin. PMA offering addresses operator-reported service difficulties for cracked OEM parts

ATS PART NUMBER

143A5240-35ATSMRO
143A5240-36ATSMRO

OEM PART NUMBER

143A5240-35
143A5240-36

TECHNICAL SPECIFICATIONS

- FAA PMA PQ5315NM, Supplement 38
- Equivalent in fit, form and function to OEM assembly
- Provided un-drilled to facilitate back-drilling
- Formed Aluminum Sheet
- Chemical conversion coating and corrosion-inhibiting primer applied
- 143A5240-35ATSMRO installs left
- 143A5240-36ATSMRO installs right

AIRCRAFT APPLICATION

Boeing 737-600/700/800/900/900ER/8/9

53: FUSELAGE

PANEL BREAK ASSY

ATA Chapter: 53-42



PRODUCT DESCRIPTION

The Panel Break Assys are components of the main cabin floor structure that support floor panels

ATS PART NUMBER

143A5240-63ATSMRO
143A5240-64ATSMRO

OEM PART NUMBER

143A5240-63
143A5240-64

TECHNICAL SPECIFICATIONS

- FAA PMA PQ5315NM, Supplement 123
- Equivalent in fit, form and function to OEM part

AIRCRAFT APPLICATION

Boeing 737-700/800/900/900ER/8/9

FITTING - WATER TANK

ATA Chapter: 53-42, 38-11



PRODUCT DESCRIPTION

The Water Tank Fitting is a component of the Water/Waste Tank Enclosure in the Aft Cargo Compartment. It provides attach points for longitudinal angles, which in turn support the Water/Waste Tank Enclosure/Lining.

ATS PART NUMBER

143A8113U6ATSMRO

OEM PART NUMBER

143A8113U6

TECHNICAL SPECIFICATIONS

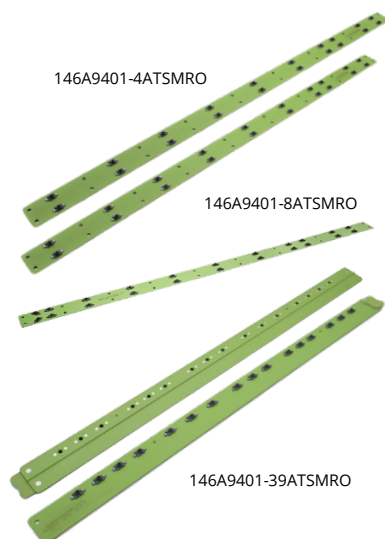
- FAA PMA PQ5315NM, Supplement 108
- Equivalent in fit, form and function to OEM part

AIRCRAFT APPLICATION

Boeing 737-700/800/8

TEE ASSEMBLY

ATA Chapter: 53-42



PRODUCT DESCRIPTION

Provides a connection point and support for the aft cargo floor

ATS PART NUMBER

146A9401-4ATSMRO
146A9401-8ATSMRO
146A9401U39ATSMRO

OEM PART NUMBER

146A9401-4
146A9401-8
146A9401-39, 146A9401Y39, 146A9401U39

TECHNICAL SPECIFICATIONS

- FAA PMA PQ5315NM, Supplement 45
- Equivalent in fit, form and function to OEM assembly
- Current OEM ICA information is applicable to parts

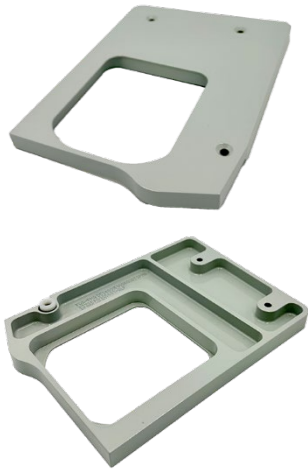
AIRCRAFT APPLICATION

Boeing 737-600/700/700C/800/900/900ER/8/9

53: FUSELAGE

PLATE ASSY - AFT PAX DOOR

ATA Chapter: 53-46



PRODUCT DESCRIPTION

The Plate Assy is located at the AFT Passenger Door and functions as a cover plate for the Girt Bar Fitting, closing out gaps between the Girt Bar Fitting, door frame, and adjacent floor panels

ATS PART NUMBER

D5348015900600ATSPMA

OEM PART NUMBER

D5348015900600

TECHNICAL SPECIFICATIONS

- FAA PMA PQ5315NM, Supplement 113
- Equivalent in fit, form and function to OEM part

AIRCRAFT APPLICATION

Airbus A319-100/A320-200/A321-200

DOOR ASSEMBLY - FWD FAIRING ACCESS

ATA Chapter: 53-51, 52-49, 53-30



PRODUCT DESCRIPTION

The Door Assembly is located between STA 520 and STA 540 on the belly of the aircraft, and provides access to the ground conditioned air connector

ATS PART NUMBER

149A7148-23ATSMRO

OEM PART NUMBER

149A7148-23

TECHNICAL SPECIFICATIONS

- FAA PMA PQ5315NM, Supplement 85.
- Equivalent in fit, form, and function to OEM assembly

AIRCRAFT APPLICATION

Boeing 737-700/700C/800/900ER/8/9

BRACKETS - DOOR ACTUATOR

ATA Chapter: 53-51



PRODUCT DESCRIPTION

Located on the wing-to-body fairing, the Bracket functions as a door actuator for the flap track cutout door. The flap track carriage engages the Bracket when the flap retracts, and the seal plate door opens

ATS PART NUMBER

149A7322U19ATSMRO

149A7322U20ATSMRO

OEM PART NUMBER

149A7322U19

149A7322U20

TECHNICAL SPECIFICATIONS

- FAA PMA PQ5315NM, Supplement 97
- Equivalent in fit, form and function to OEM part

AIRCRAFT APPLICATION

Boeing 737-700/800/900ER/8/9/8200

53: FUSELAGE

ZEE ASSY – CARGO FLOOR, SECTION 46

ATA Chapter: 53-60



PRODUCT DESCRIPTION

The PMA article is located at RBL 21.0, spanning the STA 867 to STA 887 frames in Section 46 of the Aft Cargo Compartment. It provides support and a means of retention for the RH sidewall liners and floor panels

ATS PART NUMBER

146A7502-56ATSMRO

OEM PART NUMBER

146A7502-56

TECHNICAL SPECIFICATIONS

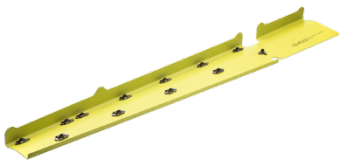
- FAA PMA PQ5315NM, Supplement 105
- Equivalent in fit, form and function to OEM part

AIRCRAFT APPLICATION

Boeing 737-600/700/700C/800/900/900ER/
8/9/8200

AFT CARGO PIT SHIELD

ATA Chapter: 53-60



PRODUCT DESCRIPTION

Provides attach points for aft cargo bay sidewall and floor panels

ATS PART NUMBER

146A8127U1ATSMRO

OEM PART NUMBER

146A8127U1

TECHNICAL SPECIFICATIONS

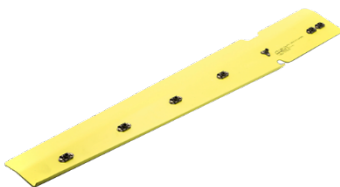
- FAA PMA PQ5315NM, Supplement 21
- Equivalent in fit, form and function to OEM assembly
- Two coats of primer for improved corrosion resistance
- 146A8127U1ATSMRO installs forward of the aft cargo bay door

AIRCRAFT APPLICATION

Boeing 737-600/700/700C/800/900

AFT CARGO PIT SHIELD

ATA Chapter: 53-60



PRODUCT DESCRIPTION

Provides attach points for sidewall and floor panels in the aft cargo compartment

ATS PART NUMBER

146A8127U12ATSMRO

OEM PART NUMBER

146A8127U12

TECHNICAL SPECIFICATIONS

- FAA PMA PQ5315NM, Supplement 21
- Equivalent in fit, form and function to OEM assembly
- Two coats of primer for improved corrosion resistance
- 146A8127U12ATSMRO installs forward of the aft cargo bay door

AIRCRAFT APPLICATION

Boeing 737-600/700/800/900/900ER

53: FUSELAGE

AFT CARGO PIT SHIELD

ATA Chapter: 53-60



PRODUCT DESCRIPTION

Provides attach points for sidewall and floor panels in the aft cargo compartment

ATS PART NUMBER

146A8127Y10ATSMRO

OEM PART NUMBER

146A8127Y10

TECHNICAL SPECIFICATIONS

- FAA PMA PQ5315NM, Supplement 21
- Equivalent in fit, form and function to OEM assembly
- Two coats of primer for improved corrosion resistance
- 146A8127Y10ATSMRO installs aft of the aft cargo bay door

AIRCRAFT APPLICATION

Boeing 737-600/700/800/900/900ER

SCUFF PLATE - FORWARD CARGO DOOR

ATA Chapter: 53-60



PRODUCT DESCRIPTION

Components of the cargo doorway lower main sill. Primarily designed to resist impact damage from cargo and protect underlying structure from environmental effects

ATS PART NUMBER

146A8342-7ATSMRO

OEM PART NUMBER

146A8342-7

TECHNICAL SPECIFICATIONS

- FAA PMA PQ5315NM, Supplement 75.
- Equivalent in fit, form and function to OEM.
- Material: Titanium

AIRCRAFT APPLICATION

Boeing 737-600/700/700C/800/900/900ER/8/9

53: FUSELAGE

PANEL – FLOOR, AFT CARGO COMPARTMENT

ATA Chapter: 53-60

453A2610-38ATSPMA



453A2610-58ATSPMA



PRODUCT DESCRIPTION

The Floor Panels are located in the AFT Cargo Compartment. They support cargo/baggage loads, protect the underlying floor structure, and provide an effective fire barrier

ATS PART NUMBER

453A2610-38ATSPMA
453A2610-58ATSPMA

OEM PART NUMBER

453A2610-38
453A2610-58

TECHNICAL SPECIFICATIONS

- FAA PMA PQ5315NM, Supplement 135
- Equivalent in fit, form and function to OEM part

AIRCRAFT APPLICATION

Boeing 737-800/8

53: FUSELAGE

CAPSTRIP

ATA Chapter: 53-60, 25-52

453A2611-4ATSMRO 453A2611-8ATSMRO



PRODUCT DESCRIPTION

The Capstrips are located in the Aft Cargo Compartment and fasten to floor panels, bulkhead liners, and sidewall liners. They function to close out gaps, assisting in fire containment and preventing debris accumulation below the floor panels

ATS PART NUMBER

453A2611-4ATSMRO
453A2611-8ATSMRO
453A2611-9ATSMRO
453A2611-24ATSMRO

OEM PART NUMBER

453A2611-4
453A2611-8
453A2611-9
453A2611-24

TECHNICAL SPECIFICATIONS

- FAA PMA PQ5315NM, Supplement 100
- Equivalent in fit, form and function to OEM part

AIRCRAFT APPLICATION

453A2611-4ATSMRO:

Boeing 737-600/700/700C/800/900/900ER/
8/9/8200

453A2611-8ATSMRO:

Boeing 737-700/700C

453A2611-9ATSMRO:

Boeing 737-700/700C

453A2611-24ATSMRO:

Boeing 737-600/700/700C/800/900/900ER

453A2611-9ATSMRO



453A2611-24ATSMRO

53: FUSELAGE

CAPSTRIP - ASSY

ATA Chapter: 25-52, 53-60

PRODUCT DESCRIPTION

The Capstrips are located in the Aft Cargo Compartment and fasten to floor panels, bulkhead liners, and sidewall liners. They function to close out gaps, assisting in fire containment and preventing debris accumulation below the floor panels

TECHNICAL SPECIFICATIONS

- FAA PMA PQ5315NM, Supplement 107
- Equivalent in fit, form and function to OEM part

AIRCRAFT APPLICATION

453A2611-27ATSMRO &

453A2611Y3ATSMRO:

Boeing 737-600/700/700C/800/900/
900ER/8/9

453A2611-13ATSMRO:

Boeing 737-700/700C/800/900/900ER/8/9

ATS PART NUMBER

453A2611-27ATSMRO
453A2611 Y3ATSMRO
453A2611-13ATSMRO

OEM PART NUMBER

453A2611-27
453A2611 Y3
453A2611-13

453A2611-27ATSMRO

453A2611Y3ATSMRO

453A2611-13ATSMRO

53: FUSELAGE

CHORD

ATA Chapter: 53-70



PRODUCT DESCRIPTION

The Chord is a component of the Section 47 floor structure, spanning the STA 927 to STA 947.5 floor beams at LBL 0.54. It functions to both stabilize the floor structure and support the cabin floor panel

ATS PART NUMBER

147A5430U1ATSMRO

OEM PART NUMBER

147A5430U1

TECHNICAL SPECIFICATIONS

- FAA PMA PQ5315NM, Supplement 94
- Equivalent in fit, form and function to OEM part

AIRCRAFT APPLICATION

Boeing 737-600/700/800/900ER/8/9/8200

INTERCOSTAL – FLOOR, AFT LAVATORY

ATA Chapter: 53-70

147A5660Y21ATSPMA



147A5660U22ATSPMA

PRODUCT DESCRIPTION

The Intercostals install in the main cabin floor structure between the STA 947.5 and STA 967 Floor Beams at LBL 50/RBL 50. They stiffen the aft floor structure and stabilize floor panels

ATS PART NUMBER

147A5660Y21ATSPMA

147A5660U22ATSPMA

OEM PART NUMBER

147A5660Y21

147A5660U22

TECHNICAL SPECIFICATIONS

- FAA PMA PQ5315NM, Supplement 133
- Equivalent in fit, form and function to OEM part

AIRCRAFT APPLICATION

Boeing 737-700/800/8

INTERCOSTAL ASSY – SECTION 47

ATA Chapter: 53-70



PRODUCT DESCRIPTION

The PMA article is located at RBL 3.0, spanning the STA 927 to STA 947 frames in Section 47 of the Aft Cargo Compartment. It provides stiffness to the adjacent structure and provides attachment locations/support for the upper rail, which in turn supports the cargo compartment floor panels

ATS PART NUMBER

147A7500U6ATSMRO

OEM PART NUMBER

147A7500U6

TECHNICAL SPECIFICATIONS

- FAA PMA PQ5315NM, Supplement 105
- Equivalent in fit, form and function to OEM part

AIRCRAFT APPLICATION

Boeing 737- 600/700/700C/800/900/900ER/8/9/8200

53: FUSELAGE

CARGO TRACK ASSEMBLY – SECTION 47, DECK SUPPORT

ATA Chapter: 53-70



PRODUCT DESCRIPTION

Supports cargo floor panels, provides floor support for payloads, and incorporates tie down attach points to prevent cargo from shifting.

ATS PART NUMBER

147A7501-13ATSMRO
147A7501-14ATSMRO

OEM PART NUMBER

147A7501-13
147A7501-14

TECHNICAL SPECIFICATIONS

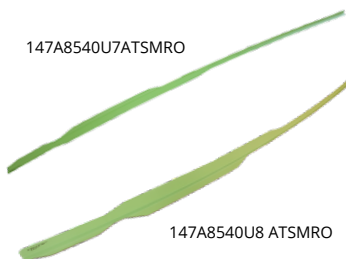
- FAA PMA PQ5315NM, Supplement 79
- Equivalent in fit, form and function to OEM assembly

AIRCRAFT APPLICATION

Boeing 737-600/700/700C/800/900/900ER/8/9

INNER CHORD LH/RH OF AFT DOORS

ATA Chapter: 53-70



PRODUCT DESCRIPTION

Formed stiffeners installed at threshold of Section 47 aft doors and are part of the door surround structure

ATS PART NUMBER

147A8540U7ATSMRO
147A8540U8ATSMRO

OEM PART NUMBER

147A8540U7
147A8540U8

TECHNICAL SPECIFICATIONS

- FAA PMA PQ5315NM, Supplement 23
- Equivalent in fit, form and function to OEM assembly
- Current OEM ICA information is applicable to parts
- Provided as undrilled parts for match-drilling on the aircraft

AIRCRAFT APPLICATION

Boeing 737-600/700/800/900/8

BRACKET ASSEMBLY – AFT CARGO COMPARTMENT

ATA Chapter: 53-70, 25-52



PRODUCT DESCRIPTION

Attachment point for Aft Cargo Compartment Bulkhead removable panel

ATS PART NUMBER

149A8118U29ATSMRO

OEM PART NUMBER

149A8118U29

TECHNICAL SPECIFICATIONS

- FAA PMA PQ5315NM, Supplement 52
- Equivalent in fit, form and function to OEM part
- Current OEM ICA information is applicable to parts

AIRCRAFT APPLICATION

Boeing 737-600/700/700C/800/900/900ER/8/9

53: FUSELAGE

CLOSURE ANGLE – SECTION 48

ATA Chapter: 53-80



PRODUCT DESCRIPTION

Closure Angles function as closeouts between the vertical stabilizer and fuselage skin

ATS PART NUMBER

148A8310U3ATSMRO
148A8310U4ATSMRO

OEM PART NUMBER

148A8310-3
148A8310-4

TECHNICAL SPECIFICATIONS

- FAA PMA PQ5315NM, Supplement 55
- Equivalent in fit, form and function to OEM part
- Current OEM ICA information is applicable to parts

AIRCRAFT APPLICATION

Boeing 737-600/700/700C/800/900

CLOSURE ANGLE – SECTION 48

ATA Chapter: 53-80



PRODUCT DESCRIPTION

Provides a closeout interface between the fuselage crown skin and vertical stabilizer

ATS PART NUMBER

148A8310U7ATSMRO
148A8310U8ATSMRO

OEM PART NUMBER

148A8310-7, 148A8310U7
148A8310-8, 148A8310U8

TECHNICAL SPECIFICATIONS

- FAA PMA PQ5315NM, Supplement 61
- Equivalent in fit, form and function to OEM part
- 148A8310U8ATSMRO opposite to 148A8310U7ATSMRO

AIRCRAFT APPLICATION

Boeing 737-700/800