

ATS

PMA and STC PRODUCT CATALOG
SPRING 2025

Distribution through Ranger Air Aviation:
+1 972 245 6699 or sales@rangeraav.com

TABLE OF CONTENTS

ATA Chapter	Chapter Name	Pages
21	AIR CONDITIONING/PRESSURIZATION	21-1
25	EQUIPMENT / FURNISHINGS	25-1 thru 25-14
26	FIRE PROTECTION	26-1
27	FLIGHT CONTROLS	27-1 thru 27-13
28	FUEL	28-1
29	HYDRAULIC POWER	29-1 thru 29-5
30	ICE AND RAIN PROTECTION	30-1
32	LANDING GEAR	32-1 thru 32-2
33	LIGHTS	33-1
34	NAVIGATION	34-1
36	PNEUMATIC	36-1
38	WATER / WASTE	38-1
50	CARGO & ACCESSORY COMPARTMENTS	50-1
51	STANDARD PRACTICES AND STRUCTURES	51-1
52	DOORS	52-1 thru 52-7
53	FUSELAGE	53-1 thru 53-31
54	NACELLES / PYLONS	54-2
55	STABILIZERS	55-1
57	WINGS	57-1 thru 57-10
71	POWER PLANT	71-1 thru 71-3
75	BLEED AIR	75-1
78	EXHAUST	78-1

21: AIR CONDITIONING/PRESSURIZATION

ARM ASSY – RAM AIR INLET

ATA Chapter: 21-51



PRODUCT DESCRIPTION

Linkage component for deployment of ram air inlet deflector door and ram air inlet modulation panel

ATS PART NUMBER

213A3160-5ATSMRO
213A3160-6ATSMRO
213A3160-8ATSMRO

OEM PART NUMBER

213A3160-5
213A3160-6
213A3160-8

TECHNICAL SPECIFICATIONS

- FAA PMA PQ5315NM, Supplement 95
- Equivalent in fit, form and function to OEM part

AIRCRAFT APPLICATION

Boeing 737-600/700/700C/800/900/900ER/
8/9/8200

SUPPORT ASSY – RAM AIR INLET

ATA Chapter: 21-51



PRODUCT DESCRIPTION

Located on the wing-to-body fairing, the Support Assys are a component of the Ram Air Inlet System, and assist in ensuring the operation of the Ram Air Inlet Deflector Door and Ram Air Inlet Modulation Panels

ATS PART NUMBER

213A3150U1ATSMRO
213A3150Y2ATSMRO
213A3150-3ATSMRO
213A3150-4ATSMRO

OEM PART NUMBER

213A3150-1/213A3150U1
213A3150-2/213A3150Y2
213A3150-3
213A3150-4

TECHNICAL SPECIFICATIONS

- FAA PMA PQ5315NM, Supplement 96
- Equivalent in fit, form and function to OEM part

AIRCRAFT APPLICATION

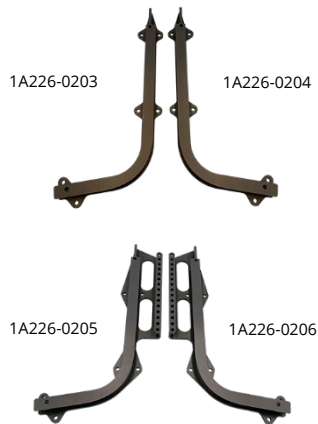
Boeing 737-600/700/700C/800/900/900ER/
8/9/8200

© 2023 Aviation Technical Services – 9/2023

25: EQUIPMENT / FURNISHINGS

FLIGHT DECK SEAT TRACKS

ATA Chapter: 25-11, 53-10



PRODUCT DESCRIPTION

Shorter lead time and less cost replacement parts for flight deck seat tracks as compared to OEM components

ATS PART NUMBER

1A226-0201ATSMRO / 1A226-0202ATSMRO
1A226-0203ATSMRO / 1A226-0204ATSMRO
1A226-0205ATSMRO / 1A226-0206ATSMRO
1A296-0339ATSMRO / 1A296-0340ATSMRO

OEM PART NUMBER

1A226-0201 / 1A226-0202
1A226-0203 / 1A226-0204
1A226-0205 / 1A226-0206
1A296-0339 / 1A296-0340

TECHNICAL SPECIFICATIONS

- FAA PMA PQ5315NM, Supplement 59
- Equivalent in fit, form and function to OEM

AIRCRAFT APPLICATION

Boeing 737-600/700/700C/800/900/900ER/8/9

AIR OUTLET

ATA Chapter: 25-11



PRODUCT DESCRIPTION

Directs air in the cockpit in a downward and aft direction, away from the flight crew

ATS PART NUMBER

214A1118-12ATSMRO

OEM PART NUMBER

214A1118-12

TECHNICAL SPECIFICATIONS

- FAA PMA PQ5315NM, Supplement 78
- Equivalent in fit, form and function to OEM assembly

AIRCRAFT APPLICATION

Boeing 737-600/700/700C/800/900/900ER/8

AIR OUTLET

ATA Chapter: 25-11



PRODUCT DESCRIPTION

Air Outlet is designed to direct air into the cockpit in the downward and aft direction, away from flight crew

ATS PART NUMBER

214A1118-13ATSMRO

OEM PART NUMBER

214A1118-13

TECHNICAL SPECIFICATIONS

- FAA PMA PQ5315NM, Supplement 78
- Equivalent in fit, form and function to OEM assembly

AIRCRAFT APPLICATION

Boeing 737-600/-700/-800/-900/-900ER/8/9

25: EQUIPMENT / FURNISHINGS

BRACKET – FIRST OBSERVER SEAT

ATA Chapter: 25-11



PRODUCT DESCRIPTION

Located on the First Observer seat support installation, the bracket retains a magnet that assists in retaining the support assembly

ATS PART NUMBER

232A3504-28ATSMRO

OEM PART NUMBER

232A3504-28

TECHNICAL SPECIFICATIONS

- FAA PMA PQ5315NM, Supplement 97
- Equivalent in fit, form and function to OEM part

AIRCRAFT APPLICATION

Boeing 737-600/700/700C/800/900/900ER/8/9/8200

BRACKET ASSEMBLY

ATA Chapter: 25-11



PRODUCT DESCRIPTION

Pilot/first officer flight kit bag restraint bracket

ATS PART NUMBER

232A4398-2ATSMRO

OEM PART NUMBER

232A4398-2

TECHNICAL SPECIFICATIONS

- FAA PMA PQ5315NM, Supplement 46
- Equivalent in fit, form and function to OEM assembly

AIRCRAFT APPLICATION

Boeing 737-600/700/700C/800/900/900ER/8/9

PAD – FLIGHT DECK, FORWARD PANEL

ATA Chapter: 25-16



PRODUCT DESCRIPTION

Component of Flight Deck Console. Primarily act as wear surface for the pilot and first officer to rest their feet

ATS PART NUMBER

233A2374-1ATSMRO

233A2374-2ATSMRO

OEM PART NUMBER

233A2374-1

233A2374-2

TECHNICAL SPECIFICATIONS

- FAA PMA PQ5315NM, Supplement 71
- Equivalent in fit, form and function to OEM
- Material: 0.125" thick Foam

AIRCRAFT APPLICATION

Boeing 737-600/700/700C/800/900/900ER

25: EQUIPMENT / FURNISHINGS

DOUBLER - STOW BIN TORQUE TUBE COVER

ATA Chapter: 25-24, 25-28



PRODUCT DESCRIPTION

Installed on overhead stowage bins throughout airplanes with Boeing Sky Interior. The aluminum Doublers are installed, to prevent further damage, over the top of existing damaged torque tube covers where exposed composite fibers or failure of the cover is found

ATS PART NUMBER

412A7220-191GATSMRO
412A7220-192GATSMRO

OEM PART NUMBER

412A7220-191G
412A7220-192G

TECHNICAL SPECIFICATIONS

- FAA PMA PQ5315NM, Supplement 78.
- Equivalent in fit, form and function to OEM.
- Material: Aluminum Alloy

AIRCRAFT APPLICATION

Boeing 737-700/800/900ER/8/9

GALLEY RETAINER ASSEMBLIES

ATA Chapter: 25-31



PRODUCT DESCRIPTION

Fastens galley cabinet doors closed. Limited to 90° rotation

ATS PART NUMBER

2034100-3ATSMRO
2034100-4ATSMRO
984121-1-15ATSMRO

OEM PART NUMBER

2034100-3 L/H Quarter Turn Retainer
2034100-4 R/H Quarter Turn Retainer
984121-1-15

TECHNICAL SPECIFICATIONS

- FAA PMA PQ5315NM, Supplement 21 and 23
- Equivalent in fit, form and function to OEM assembly

AIRCRAFT APPLICATION

Boeing 737-700/800

GALLEY GUIDE ASSEMBLIES

ATA Chapter: 25-31



PRODUCT DESCRIPTION

Allows doors to open and slide into G3 and G4 Galley assemblies

ATS PART NUMBER

934023-1ATSMRO
934023-2ATSMRO

OEM PART NUMBER

934023-1
934023-2

TECHNICAL SPECIFICATIONS

- FAA PMA PQ5315NM, Supplement 21
- Equivalent in fit, form and function to OEM assembly
- Improved track and wheel to reduce wear

AIRCRAFT APPLICATION

Boeing 737-700

25: EQUIPMENT / FURNISHINGS

MAT – FWD LAVATORY

ATA Chapter: 25-40



1L400107-29BATSMRO



1L400107-119ATSMRO

PRODUCT DESCRIPTION

The Mats are installed in the Lavatory A floor pan. They function to provide a replaceable, slip-resistant, and decorative surface visible to passengers and crew

ATS PART NUMBER

1L400107-29BATSMRO
1L400107-119ATSMRO

OEM PART NUMBER

1L400107-29B
1L400107-119

TECHNICAL SPECIFICATIONS

- FAA PMA PQ5315NM, Supplement 106
- Equivalent in fit, form and function to OEM part

AIRCRAFT APPLICATION

1L400107-29BATSMRO:

Boeing 737-8

1L400107-119ATSMRO:

Boeing 737-800 Series/8

MAT – AFT LAVATORY

ATA Chapter: 25-40



1L400407-87BATSMRO



1L400407-117ATSMRO

PRODUCT DESCRIPTION

The PMA articles are installed into the floor pan of the Aft Lavatories D and E. Their function is to provide an aesthetic decorative, slip-resistant, and easily replaceable wear surface

ATS PART NUMBER

1L400407-87BATSMRO
1L400407-117ATSMRO

OEM PART NUMBER

1L400407-87B
1L400407-117

TECHNICAL SPECIFICATIONS

- FAA PMA PQ5315NM, Supplement 104
- Equivalent in fit, form and function to OEM part

AIRCRAFT APPLICATION

1L400407-87BATSMRO:

Boeing 737-8

1L400407-117ATSMRO:

Boeing 737-800/8

DOUBLER – LAVATORY B

ATA Chapter: 25-40



PRODUCT DESCRIPTION

The doubler is located on the outer wall of the Lavatory B. It bonds to the fiberglass skin of the lav wall and attaches to the forward outboard attachment block to provide supplemental damage and corrosion protection

ATS PART NUMBER

C23302-333-101ATSMRO

OEM PART NUMBER

C23302-333-101

TECHNICAL SPECIFICATIONS

- FAA PMA PQ5315NM, Supplement 82
- Equivalent in fit, form and function to OEM part

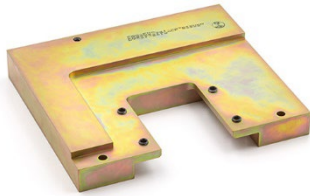
AIRCRAFT APPLICATION

Boeing 737-600/700/700C

25: EQUIPMENT / FURNISHINGS

ATTACHMENT BLOCK ASSEMBLY – LAVATORY B

ATA Chapter: 25-40



PRODUCT DESCRIPTION

Part attaches Rumbold Lavatory B module to the interior cabin floor (forward outboard attachment block assembly)

ATS PART NUMBER

C23302-341-003ATSMRO

OEM PART NUMBER

C23302-341-003

TECHNICAL SPECIFICATIONS

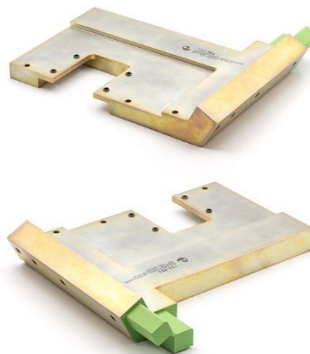
- FAA PMA PQ513NM, Supplement 16
- Manufactured from stainless steel for superior strength and comparable corrosion resistance
- Cadmium plated with a corrosion-inhibiting epoxy primer on all applicable mating surfaces
- Per-lavatory kit option

AIRCRAFT APPLICATION

Boeing 737-300/500/600/700/700C

ATTACHMENT BLOCK ASSEMBLY – LAVATORY B

ATA Chapter: 25-40



PRODUCT DESCRIPTION

Part attaches Rumbold Lavatory B module to the interior cabin floor (forward inboard attachment block assembly)

ATS PART NUMBER

C23302-351-007ATSMRO

OEM PART NUMBER

C23302-351-007

TECHNICAL SPECIFICATIONS

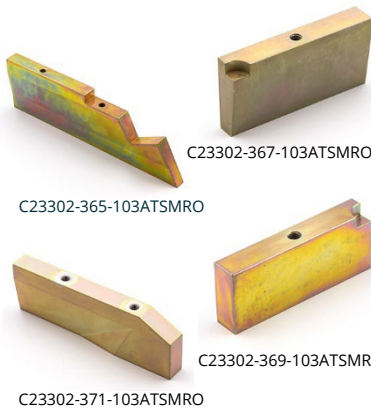
- FAA PMA PQ513NM, Supplement 16
- Manufactured from stainless steel for superior strength and comparable corrosion resistance
- Cadmium plated with a corrosion-inhibiting epoxy primer on all applicable mating surfaces
- Per-lavatory kit option

AIRCRAFT APPLICATION

Boeing 737-300/500/600/700/700C

FLOOR PANEL BLOCK ASSEMBLIES – LAVATORY B

ATA Chapter: 25-40



PRODUCT DESCRIPTION

Part attaches Rumbold Lavatory B module to the interior cabin floor (floor panel block assemblies)

ATS PART NUMBER

C23302-365-103ATSMRO

C23302-367-103ATSMRO

C23302-369-103ATSMRO

C23302-371-103ATSMRO

OEM PART NUMBER

C23302-365-103

C23302-367-103

C23302-369-103

C23302-371-103

TECHNICAL SPECIFICATIONS

- FAA PMA PQ513NM, Supplement 16
- Equivalent in fit, form and function to OEM assembly
- Manufactured from stainless steel for superior strength and comparable corrosion resistance
- Cadmium plated with a corrosion-inhibiting epoxy primer on all applicable mating surfaces
- Per-lavatory kit option

AIRCRAFT APPLICATION

Boeing 737-300/500/600/700/700C

25: EQUIPMENT / FURNISHINGS

CAPPING – LAV A and LAV B

ATA Chapter: 25-45, 25-46



PRODUCT DESCRIPTION

The Lav Capping fastens to the Lav A/B wall and acts as both a door frame closeout and a striker plate attachment that accepts the door latch

ATS PART NUMBER

C22102-264-007ATSMRO
C22302-655-005ATSMRO

OEM PART NUMBER

C22102-264-007
C22302-655-005

TECHNICAL SPECIFICATIONS

- FAA PMA PQ5315NM, Supplement 94
- Equivalent in fit, form and function to OEM part

AIRCRAFT APPLICATION

C22102-264-007ATSMRO:

Boeing 737-600/700/800

C22302-655-005ATSMRO:

Boeing 737-700

BRACKET ASSEMBLY – AFT CARGO COMPARTMENT

ATA Chapter: 25-52, 53-70



PRODUCT DESCRIPTION

Attachment point for Aft Cargo Compartment Bulkhead removable panel

ATS PART NUMBER

149A8118U29ATSMRO

OEM PART NUMBER

149A8118U29

TECHNICAL SPECIFICATIONS

- FAA PMA PQ5315NM, Supplement 52
- Equivalent in fit, form and function to OEM part
- Current OEM ICA information is applicable to parts

AIRCRAFT APPLICATION

Boeing 737-600/700/700C/800/900/900ER/8/9

SEAL – VERTICAL RIGHT HAND, FORWARD CARGO COMPARTMENT FORWARD BULKHEAD

ATA Chapter: 25-52



PRODUCT DESCRIPTION

Component of Bulkhead Pressure Relief Panel. Primarily act as closeout seal to mitigate risk of debris and fire exposure to the O2 Cylinder and Battery, along with restricting smoke penetration in the event of a fire

ATS PART NUMBER

284A6841-28ATSMRO

OEM PART NUMBER

284A6841-28

TECHNICAL SPECIFICATIONS

- FAA PMA PQ5315NM, Supplement 67.
- Equivalent in fit, form and function to OEM.
- Material: Silicone Foam Rubber.
- Stock Size: 0.125" x 2.80" x 14.50"

AIRCRAFT APPLICATION

Boeing 737-600/700/800/900/900ER

25: EQUIPMENT / FURNISHINGS

SEAL – VERTICAL LEFT HAND, FORWARD CARGO COMPARTMENT FORWARD BULKHEAD

ATA Chapter: 25-52



PRODUCT DESCRIPTION

Component of Bulkhead Pressure Relief Panel. Primarily act as closeout seal to mitigate risk of debris and fire exposure to the O2 Cylinder and Battery, along with restricting smoke penetration in the event of a fire

ATS PART NUMBER

284A6841-29ATSMRO

OEM PART NUMBER

284A6841-29

TECHNICAL SPECIFICATIONS

- FAA PMA PQ5315NM, Supplement 67.
- Equivalent in fit, form and function to OEM.
- Material: Silicone Foam Rubber.
- Stock Size: 0.125" x 2.80" x 14.50"

AIRCRAFT APPLICATION

Boeing 737-600/700/800/900/900ER

SEAL – HORIZONTAL, FORWARD CARGO COMPARTMENT FORWARD BULKHEAD

ATA Chapter: 25-52



PRODUCT DESCRIPTION

Component of Bulkhead Pressure Relief Panel. Primarily act as closeout seal to mitigate risk of debris and fire exposure to the O2 Cylinder and Battery, along with restricting smoke penetration in the event of a fire

ATS PART NUMBER

284A6841-49ATSMRO

OEM PART NUMBER

284A6841-49

TECHNICAL SPECIFICATIONS

- FAA PMA PQ5315NM, Supplement 67.
- Equivalent in fit, form and function to OEM.
- Material: Silicone Foam Rubber.
- Stock Size: 0.125" x 3.80" x 32.90"

AIRCRAFT APPLICATION

Boeing 737-600/700/800/900/900ER/8/9

25: EQUIPMENT / FURNISHINGS

CAPSTRIP

ATA Chapter: 25-52, 53-30

453A1611-16ATSMRO



453A1611-14ATSMRO

453A1611-17ATSMRO



453A1611-30ATSMRO

453A1611-31ATSMRO

PRODUCT DESCRIPTION

The Capstrips are located in the Fwd Cargo Compartment and fasten to floor panels and sidewall liners. They function to close out gaps, assisting in fire containment and preventing debris accumulation below the floor panels

ATS PART NUMBER

453A1611-14ATSMRO
453A1611-16ATSMRO
453A1611-17ATSMRO
453A1611-30ATSMRO
453A1611-31ATSMRO

OEM PART NUMBER

453A1611-14
453A1611-16
453A1611-17
453A1611-30
453A1611-31

TECHNICAL SPECIFICATIONS

- FAA PMA PQ5315NM, Supplement 99
- Equivalent in fit, form and function to OEM part

AIRCRAFT APPLICATION

453A1611-14ATSMRO:

Boeing 737-800/900/900ER/8/9

453A1611-16ATSMRO:

Boeing 737-800/8

453A1611-17ATSMRO:

Boeing 737-800/8

453A1611-30ATSMRO:

Boeing 737-800/900/900ER/8/9

453A1611-31ATSMRO:

Boeing 737-800/900/900ER/8/9

25: EQUIPMENT / FURNISHINGS

SHROUD - STA 731 BLKD

ATA Chapter: 25-52



453A2510-1ATSMRO



453A2510-2ATSMRO



453A2510-20ATSMRO

PRODUCT DESCRIPTION

The Shrouds are components of the aft cargo compartment forward bulkhead. They function to provide protection for the pneumatic ducting and act as a wear surface against any loose items during cargo loading or flight

ATS PART NUMBER

453A2510-1ATSMRO
453A2510-2ATSMRO
453A2510-20ATSMRO

OEM PART NUMBER

453A2510-1
453A2510-2
453A2510-20

TECHNICAL SPECIFICATIONS

- FAA PMA PQ5315NM, Supplement 106
- Equivalent in fit, form and function to OEM part

AIRCRAFT APPLICATION

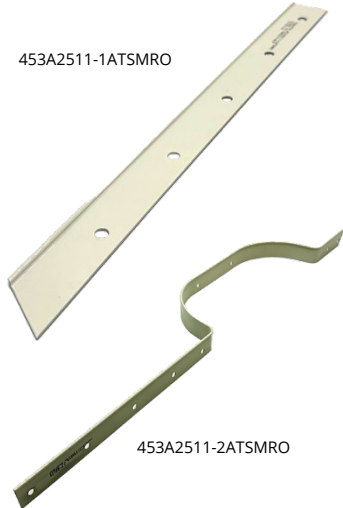
Boeing 737-600Series/700 Series/700C Series/
800 Series/900 Series/900ER Series/
8/9/8200

25: EQUIPMENT / FURNISHINGS

CAPSTRIP, AFT CARGO LINER

ATA Chapter: 25-52

453A2511-1ATSMRO



453A2511-2ATSMRO

PRODUCT DESCRIPTION

The PMA articles are components of the Aft Cargo Compartment STA 731 Bulkhead Lining Installation. They install on the vertical flange of the bulkhead liner and function as a closeout, preventing moisture and debris intrusion

ATS PART NUMBER

453A2511-1ATSMRO
453A2511-2ATSMRO

OEM PART NUMBER

453A2511-1
453A2511-2

TECHNICAL SPECIFICATIONS

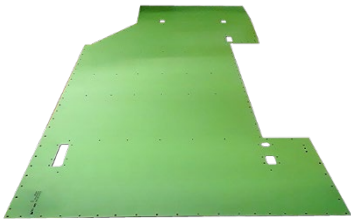
- FAA PMA PQ5315NM, Supplement 105
- Equivalent in fit, form and function to OEM part

AIRCRAFT APPLICATION

Boeing 737-700/800/8

AFT CARGO BAY DECK PANEL

ATA Chapter: 25-52



PRODUCT DESCRIPTION

Replacement for OEM Deck Panel located in Aft Cargo Bay

ATS PART NUMBER

453A2610-2ATSMRO

OEM PART NUMBER

453A2610-2

TECHNICAL SPECIFICATIONS

- FAA PMA PQ5315NM, Supplement 21
- Equivalent in fit, form and function to OEM assembly
- Drilled part to eliminate backshop time for hole details
- Clad aluminum sheet part
- Chemical conversion coating and corrosion-inhibiting primer
- Dimensions: 115.00" (292.10cm) long x 43.70" (110.99cm) wide x 0.08" (0.20cm) thick, 40.6 lbs. (18.4 kg)

AIRCRAFT APPLICATION

Boeing 737-700

25: EQUIPMENT / FURNISHINGS

CAPSTRIP

ATA Chapter: 25-52, 53-60

453A2611-4ATSMRO 453A2611-8ATSMRO



PRODUCT DESCRIPTION

The Capstrips are located in the Aft Cargo Compartment and fasten to floor panels, bulkhead liners, and sidewall liners. They function to close out gaps, assisting in fire containment and preventing debris accumulation below the floor panels

ATS PART NUMBER

453A2611-4ATSMRO
453A2611-8ATSMRO
453A2611-9ATSMRO
453A2611-24ATSMRO

OEM PART NUMBER

453A2611-4
453A2611-8
453A2611-9
453A2611-24

TECHNICAL SPECIFICATIONS

- FAA PMA PQ5315NM, Supplement 100
- Equivalent in fit, form and function to OEM part

AIRCRAFT APPLICATION

453A2611-4ATSMRO:

Boeing 737-600/700/700C/800/900/900ER/
8/9/8200

453A2611-8ATSMRO:

Boeing 737-700/700C

453A2611-9ATSMRO:

Boeing 737-700/700C

453A2611-24ATSMRO:

Boeing 737-600/700/700C/800/900/900ER

25: EQUIPMENT / FURNISHINGS

CAPSTRIP - ASSY

ATA Chapter: 25-52, 53-60

PRODUCT DESCRIPTION

The Capstrips are located in the Aft Cargo Compartment and fasten to floor panels, bulkhead liners, and sidewall liners. They function to close out gaps, assisting in fire containment and preventing debris accumulation below the floor panels

ATS PART NUMBER

453A2611-27ATSMRO
453A2611 Y3ATSMRO
453A2611-13ATSMRO

OEM PART NUMBER

453A2611-27
453A2611 Y3
453A2611-13

TECHNICAL SPECIFICATIONS

- FAA PMA PQ5315NM, Supplement 107
- Equivalent in fit, form and function to OEM part

AIRCRAFT APPLICATION

453A2611-27ATSMRO &

453A2611Y3ATSMRO:

Boeing 737-600/700/700C/800/900/
900ER/8/9

453A2611-13ATSMRO:

Boeing 737-700/700C/800/900/900ER/8/9

453A2611-27ATSMRO

453A2611Y3ATSMRO

453A2611-13ATSMRO

25: EQUIPMENT / FURNISHINGS

CARGOTEK® CARGO BAY PROTECTION SOLUTIONS

ATA Chapter: 25-52



PRODUCT DESCRIPTION

Durable, thin floor lining system that adheres to original flooring providing protection. CargoTek® reduces cargo bay maintenance costs and cargo-related gate delays resulting from unexpected discovery of scratches, dents, and cracks on original equipment cargo bays. Complete CargoTek® floor protection solution includes liners for lower, mid, and upper floor panels.

ATS PART NUMBER

Please contact our sales representative for part number applicability.



TECHNICAL SPECIFICATIONS

- FAA Certified Design under STC # ST04081NY, PMA Obtained
- Made from impact-resistant Kydex® T
- Water/moisture resistant
- Precision tooled to completely cover pit floor while accommodating all hold-down locations and openings. All fasteners are completely covered by our pit liners
- UL Std 94 V-0 & 5V fire rating, meeting CFR 25.855 requirements

AIRCRAFT APPLICATION

Currently available for:

Airbus: A319-100, A320-200, A320neo, A321-200, A321neo

Option for:

Airbus: A321neo w/ Extra Fuel Tanks, A321LR, and A321XLR

BRACKET ASSEMBLY – FIRST AID KIT

ATA Chapter: 25-64



PRODUCT DESCRIPTION

The Bracket Assy mounts to Lavatories or Galleys and retains First Aid Kits within the cabin.

ATS PART NUMBER

416N1014-129ATSMRO

OEM PART NUMBER

416N1014-129

TECHNICAL SPECIFICATIONS

- FAA PMA PQ5315NM, Supplement 102
- Equivalent in fit, form and function to OEM part

AIRCRAFT APPLICATION

Boeing 737-800/8/9

25: EQUIPMENT / FURNISHINGS

TIE DOWN ASSEMBLY – LH FWD ENTRY DOOR

ATA Chapter: 25-66, 53-42



141A5220-2, STA 312



141A5220-4, STA 344

PRODUCT DESCRIPTION

Attached to the floor structure located at the LH Fwd Entry Door to secure the Escape Slide during emergency evacuation

ATS PART NUMBER

141A5220-2ATSMRO
141A5220-4ATSMRO

OEM PART NUMBER

141A5220-2
141A5220-4

TECHNICAL SPECIFICATIONS

- FAA PMA PQ5315NM, Supplement 53
- Equivalent in fit, form and function to OEM part
- Current OEM ICA information is applicable to parts

AIRCRAFT APPLICATION

141A5220-2ATSMRO:

Boeing 737-600/700/700C/800/900/900ER/8/9

141A5220-4ATSMRO:

Boeing 737-600/700/800/900/900ER/8/9

BLANKET ASSY – FWD & AFT CARGO DOORS

ATA Chapter: 25-80



411A4907-4189ATSMRO



411A4907-4190ATSMRO

PRODUCT DESCRIPTION

The Blanket Assy is installed on the interior of the FWD and AFT Cargo Doors and functions to insulate and protect the Cargo Door

ATS PART NUMBER

411A4907-4189ATSMRO
411A4907-4190ATSMRO

OEM PART NUMBER

411A4907-4189
411A4907-4190

TECHNICAL SPECIFICATIONS

- FAA PMA PQ5315NM, Supplement 110
- Equivalent in fit, form and function to OEM part

AIRCRAFT APPLICATION

Boeing 737-700/700C/800/900ER/8/9/8200

26: FIRE PROTECTION

PAN ASSY – SMOKE DETECTOR

ATA Chapter: 26-16



PRODUCT DESCRIPTION

The PMA article is a component of the Cargo Compartment smoke detection installation. It functions as a recess in the ceiling panel to house the smoke detectors in both the Fwd and Aft Cargo Compartments

ATS PART NUMBER

218A4020-10ATSMRO

OEM PART NUMBER

218A4020-10

TECHNICAL SPECIFICATIONS

- FAA PMA PQ5315NM, Supplement 105
- Equivalent in fit, form and function to OEM part

AIRCRAFT APPLICATION

Boeing 737-600/700/700C/800/900

© 2024 Aviation Technical Services – 8/2024



Trusted Partners
Supporting Flight

For more information contact:

sales@rangeraav.com

+1 972 245 6699

ATSmro.com

27: FLIGHT CONTROLS

HYDRAULIC FUSE HOUSING

ATA Chapter: 27-32



PRODUCT DESCRIPTION

Component housing can be installed on separate Flow Rate Fuse assemblies
Contains parts that make a hydraulic fuse housing

ATS PART NUMBER

7-1462-1ATS

OEM PART NUMBER

7-1462-1

TECHNICAL SPECIFICATIONS

- FAA PMA PQ5315NM, Supplement 3.
- Equivalent in fit, form and function to OEM assembly
- 2-7680 and 2-7681
- 3.76 inches long x 0.93 inches diameter
- Approximate Weight = 0.21 lbs.
- Stainless steel material

AIRCRAFT APPLICATION

Boeing 737-300/400/500/600/700/700C/800/900/900ER
Boeing 757-200/200PF/300
Boeing 767-200/300/300F/400ER
Boeing 777-200/200LR/300/300ER/F Series

RETAINER, SEAL – INBD FIXED T/E

ATA Chapter: 27-50, 27-51



PRODUCT DESCRIPTION

The Seal Retainers accommodate an aerodynamic bulb seal to reduce drag at the wing trailing edge panel transition to inboard flap

ATS PART NUMBER

115A2752-17ATSMRO
115A2752-18ATSMRO

OEM PART NUMBER

115A2752-17
115A2752-18

TECHNICAL SPECIFICATIONS

- FAA PMA PQ5315NM, Supplement 89
- Equivalent in fit, form, and function to OEM assembly

AIRCRAFT APPLICATION

Boeing 737-600/700/700C/800/900/900ER

SIDEPLATE ASSY – LH & RH INBD T/E

ATA Chapter: 27-51



PRODUCT DESCRIPTION

The Sideplate Assy is a part of the Wing T/E Flap Drive System. It supports No. 3 (LH) and No. 6 (RH) Fairing and the transmission that powers the jackscrew used to actuate the inboard T/E Flaps.

ATS PART NUMBER

113A1320-11ATSMRO
113A1320-12ATSMRO

OEM PART NUMBER

113A1320-11
113A1320-12

TECHNICAL SPECIFICATIONS

- FAA PMA PQ5315NM, Supplement 114
- Equivalent in fit, form and function to OEM part

AIRCRAFT APPLICATION

Boeing 737-700/800

27: FLIGHT CONTROLS

SIDEPLATE ASSY - LH & RH INBD T/E

ATA Chapter: 27-51



PRODUCT DESCRIPTION

The Sideplate Assy is a part of the Wing T/E Flap Drive System. It supports No. 3 (LH) and No. 6 (RH) Fairing and the transmission that powers the jackscrew used to actuate the inboard T/E Flaps.

ATS PART NUMBER

113A1320-13ATSMRO
113A1320-14ATSMRO

OEM PART NUMBER

113A1320-13
113A1320-14

TECHNICAL SPECIFICATIONS

- FAA PMA PQ5315NM, Supplement 114
- Equivalent in fit, form and function to OEM part

AIRCRAFT APPLICATION

Boeing 737-700/800

FITTING SUB-ASSEMBLY

ATA Chapter: 27-51



PRODUCT DESCRIPTION

Serves as an attach point for the forward fairing section, connecting it to the mechanism on the interior of the fairing.

ATS PART NUMBER

113A1350-3ATSMRO

OEM PART NUMBER

113A1350-3

TECHNICAL SPECIFICATIONS

- FAA PMA PQ5315NM, Supplement 36.
- Equivalent in fit, form and function to OEM assembly
- 6.7 inches long x 3.5-inch-wide x 2.0-inches-deep
- Approximate Weight = 0.45 lbs.
- Aluminum material

AIRCRAFT APPLICATION

Boeing 737-600/700/700C/800/900/900ER/8/9

27: FLIGHT CONTROLS

ATTACH BEAM ASSEMBLY – POSITIONS #1 and #8

ATA Chapter: 27-51

113A9104-1



PRODUCT DESCRIPTION

Component of the Flap Track Fairing Module that serves as an aft attach point to hold the corresponding Flap Track Fairing in place

P/N: 113A9104-1ATSMRO holds #1

P/N: 113A9104-2ATSMRO holds #8

ATS PART NUMBER

113A9104-1ATSMRO

113A9104-2ATSMRO

OEM PART NUMBER

113A9104-1

113A9104-2

TECHNICAL SPECIFICATIONS

- FAA PMA PQ5315NM, Supplement 41
- Equivalent in fit, form and function to OEM assembly
- 13.34-inches-long x 5.14-inches-wide x 2.76-inches-deep
- Approximate Weight = 2.48 lbs.
- Aluminum material

AIRCRAFT APPLICATION

Boeing 737-600/700/700C/800/900/900ER/8/9

113A9104-2



ATTACH BEAM – POSITIONS #1 and #8

ATA Chapter: 27-51

113A9104-3



PRODUCT DESCRIPTION

Component of the Flap Track Fairing Module that serves as an aft attach point to hold the corresponding Flap Track Fairing in place

P/N: 113A9104-3ATSMRO holds #1

P/N: 113A9104-4ATSMRO holds #8

ATS PART NUMBER

113A9104-3ATSMRO

113A9104-4ATSMRO

OEM PART NUMBER

113A9104-3

113A9104-4

TECHNICAL SPECIFICATIONS

- FAA PMA PQ5315NM, Supplement 41
- Equivalent in fit, form and function to OEM assembly
- 13.34-inches-long x 5.14-inches-wide x 2.76-inches-deep
- Approximate Weight = 2.48 lbs.
- Aluminum material

AIRCRAFT APPLICATION

Boeing 737-600/700/700C/800/900/900ER/8/9

113A9104-4



27: FLIGHT CONTROLS

ADJUST LINK ASSEMBLY – POSITIONS #1, #2, #7 and #8

ATA Chapter: 27-51



113A9105-5

PRODUCT DESCRIPTION

Component of the Flap Track Fairing Module that serves as an aft attach point to hold the corresponding Flap Track Fairing in place

P/N: 113A9105-5ATSMRO holds #1 and #8

P/N: 113A9205-5ATSMRO holds #2 and #7

ATS PART NUMBER

113A9105-5ATSMRO

113A9205-5ATSMRO

OEM PART NUMBER

113A9105-5

113A9205-5



113A9205-5

TECHNICAL SPECIFICATIONS

- FAA PMA PQ5315NM, Supplement 42.
- Equivalent in fit, form and function to OEM assembly.

- Aluminum material

113A9105-5ATSMRO:

- 13.45 inches long x 6.77 inches wide x 1.90 inches deep.

- Approximate Weight = 1.45 lbs.

113A9205-5ATSMRO:

- 13.74 inches long x 7.16 inches wide x 1.90 inches deep.

- Approximate Weight = 1.50 lbs.

AIRCRAFT APPLICATION

Boeing 737-600/700/800/900/900ER/8

ADJUST LINK – POSITIONS #1, #2, #7 and #8

ATA Chapter: 27-51



113A9105-7

PRODUCT DESCRIPTION

Component of the Flap Track Fairing Module that serves as an aft attach point to hold the corresponding Flap Track Fairing in place

P/N: 113A9105-7ATSMRO holds #1 and #8

P/N: 113A9205-7ATSMRO holds #2 and #7

ATS PART NUMBER

113A9105-7ATSMRO

113A9205-7ATSMRO

OEM PART NUMBER

113A9105-7

113A9205-7



113A9205-7

TECHNICAL SPECIFICATIONS

- FAA PMA PQ5315NM, Supplement 42.
- Equivalent in fit, form and function to OEM assembly.

- Aluminum material

113A9105-7ATSMRO:

- 13.45 inches long x 6.77 inches wide x 1.90 inches deep.

- Approximate Weight = 1.45 lbs.

113A9205-7ATSMRO:

- 13.74 inches long x 7.16 inches wide x 1.90 inches deep.

- Approximate Weight = 1.50 lbs.

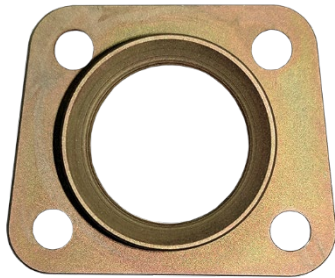
AIRCRAFT APPLICATION

Boeing 737-600/700/800/900/900ER/8/9

27: FLIGHT CONTROLS

BUSHING - ADJUST LINK

ATA Chapter: 27-51, 57-53



PRODUCT DESCRIPTION

Component of the Flap Track Fairing Module that serves as an aft attach point to hold the #1/#2/#3/#6/#7/#8 Flap Track Fairing in place

ATS PART NUMBER

113A9120-1ATSMRO

OEM PART NUMBER

113A9120-1

TECHNICAL SPECIFICATIONS

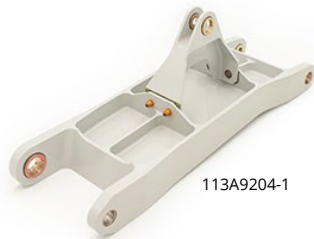
- Bushing - Adjust Link (P/N: 113A9120-1ATSMRO) is a detail that feeds into Adjust Link Assembly (P/N: 113A9305-5ATSMRO, Supplement 24)

AIRCRAFT APPLICATION

Boeing 737-600/700/800/900/900ER/8

ATTACH BEAM ASSEMBLY - POSITIONS #2 and #7

ATA Chapter: 27-51



113A9204-1



113A9204-2

PRODUCT DESCRIPTION

Component of the Flap Track Fairing Module that serves as an aft attach point to hold the corresponding Flap Track Fairing in place

P/N: 113A9204-1ATSMRO holds #2

P/N: 113A9204-2ATSMRO holds #7

ATS PART NUMBER

113A9204-1ATSMRO

113A9204-2ATSMRO

OEM PART NUMBER

113A9204-1

113A9204-2

TECHNICAL SPECIFICATIONS

- FAA PMA PQ5315NM, Supplement 41
- Equivalent in fit, form and function to OEM assembly
- 15.94-inches-long x 5.17-inches-wide x 6.01-inches-deep
- Approximate Weight = 3.40 lbs.
- Aluminum material

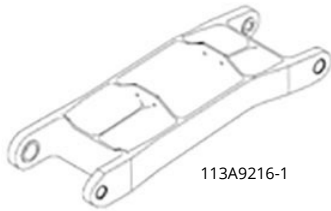
AIRCRAFT APPLICATION

Boeing 737-600/700/700C/800/900/900ER/8/9

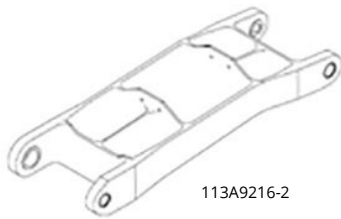
27: FLIGHT CONTROLS

BEAM ASSEMBLY – POSITIONS #2 and #7

ATA Chapter: 27-51



113A9216-1



113A9216-2

PRODUCT DESCRIPTION

Component of the Flap Track Fairing Module that serves as an aft attach point to hold the corresponding Flap Track Fairing in place

P/N: 113A9216-1ATSMRO holds #2

P/N: 113A9216-2ATSMRO holds #7

ATS PART NUMBER

113A9216-1ATSMRO

113A9216-2ATSMRO

OEM PART NUMBER

113A9216-1

113A9216-2

TECHNICAL SPECIFICATIONS

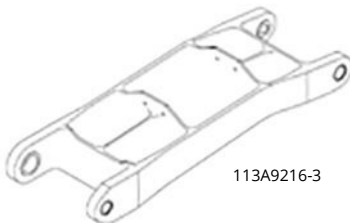
- FAA PMA PQ5315NM, Supplement 41
- Equivalent in fit, form and function to OEM assembly
- 15.70-inches-long x 5.17-inches-wide x 2.60-inches-deep.
- Approximate Weight = 3.40 lbs.
- Aluminum material

AIRCRAFT APPLICATION

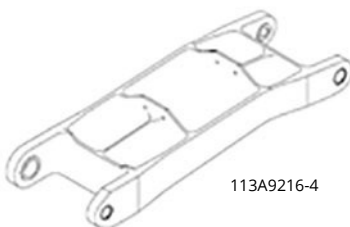
Boeing 737-600/700/700C/800/900/900ER/8/9

ATTACH BEAM – POSITIONS #2 and #7

ATA Chapter: 27-51



113A9216-3



113A9216-4

PRODUCT DESCRIPTION

Component of the Flap Track Fairing Module that serves as an aft attach point to hold the corresponding Flap Track Fairing in place

P/N: 113A9216-3ATSMRO holds #2

P/N: 113A9216-4ATSMRO holds #7

ATS PART NUMBER

113A9216-3ATSMRO

113A9216-4ATSMRO

OEM PART NUMBER

113A9216-3

113A9216-4

TECHNICAL SPECIFICATIONS

- FAA PMA PQ5315NM, Supplement 41
- Equivalent in fit, form and function to OEM assembly
- 15.70-inches-long x 5.17-inches-wide x 2.60-inches-deep.
- Approximate Weight = 3.40 lbs.
- Aluminum material

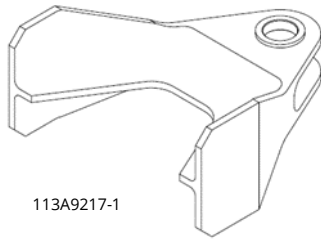
AIRCRAFT APPLICATION

Boeing 737-600/700/700C/800/900/900ER/8/9

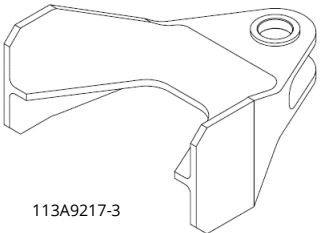
27: FLIGHT CONTROLS

FITTING ASSEMBLY – POSITIONS #2 and #7

ATA Chapter: 27-51



113A9217-1



113A9217-3

PRODUCT DESCRIPTION

Component of the Flap Track Fairing Module that serves as an aft attach point to hold the #2 and #7 Flap Track Fairing in place

ATS PART NUMBER

113A9217-1ATSMRO
113A9217-3ATSMRO

OEM PART NUMBER

113A9217-1
113A9217-3

TECHNICAL SPECIFICATIONS

- FAA PMA PQ5315NM, Supplement 41
- Equivalent in fit, form and function to OEM assembly
- 4.37-inches-long x 4.24-inches-wide x 2.10-inches-deep.
- Aluminum material

AIRCRAFT APPLICATION

Boeing 737-600/700/700C/800/900/900ER/8/9

ATTACH BEAM ASSEMBLY – POSITIONS #3 and #6

ATA Chapter: 27-51



PRODUCT DESCRIPTION

Component of the Flap Track Fairing Module that serves as an aft attach point to hold the #3 and #6 Flap Track Fairings in place

ATS PART NUMBER

113A9304-1ATSMRO

OEM PART NUMBER

113A9304-1

TECHNICAL SPECIFICATIONS

- FAA PMA PQ5315NM, Supplement 23
- Equivalent in fit, form and function to OEM assembly
- 11.31-inches-long x 5.07-inches-wide x 1.64-inches-deep
- Approximate Weight = 2.04 lbs.
- Aluminum material

AIRCRAFT APPLICATION

Boeing 737-600/700/700C/800/900/900ER/8

ADJUST LINK ASSEMBLY

ATA Chapter: 27-51, 57-53



PRODUCT DESCRIPTION

Component of the Flap Track Fairing Module that serves as an aft attach point to hold the #3 and #6 Flap Track Fairing in place

ATS PART NUMBER

113A9305-5ATSMRO

OEM PART NUMBER

113A9305-5

TECHNICAL SPECIFICATIONS

- FAA PMA PQ5315NM, Supplement 24.
- Equivalent in fit, form and function to OEM assembly.
- 15.3 inches long x 6.8 inches wide x 1.9 inches deep.
- Approximate Weight = 1.65 lbs

AIRCRAFT APPLICATION

Boeing 737-600/700/800/900/900ER/8



Trusted Partners
Supporting Flight

27: FLIGHT CONTROLS

ADJUST LINK

ATA Chapter: 27-51, 57-53



PRODUCT DESCRIPTION

Component of the Flap Track Fairing Module that serves as an aft attach point to hold the #3 and #6 Flap Track Fairing in place

ATS PART NUMBER

113A9305-7ATSMRO

OEM PART NUMBER

113A9305-7

TECHNICAL SPECIFICATIONS

- Adjust Link (P/N: 113A9305-7ATSMRO) is a detail that feeds into Adjust Link Assembly (P/N: 113A9305-5ATSMRO, Supplement 24)

AIRCRAFT APPLICATION

Boeing 737-600/700/800/900/900ER/8

DRIVE ROD ASSEMBLY and ADJUST ROD ASSEMBLY

ATA Chapter: 27-51



113A9306-4



113A9307-4

PRODUCT DESCRIPTION

Components of the Flap Track Fairing Module that serves as an aft attach point to hold Flap Track Fairing in place

Both Drive Rod Assembly (P/N: 113A9306-4ATSMRO) and Adjust Rod Assembly (P/N: 113A9307-4ATSMRO) hold #3 and #6

ATS PART NUMBER

113A9306-4ATSMRO

113A9307-4ATSMRO

OEM PART NUMBER

113A9306-1, 113A9306-4

113A9307-1, 113A9307-4

TECHNICAL SPECIFICATIONS

- FAA PMA PQ5315NM, Supplement 51
- Equivalent in fit, form and function to OEM assembly

113A9306-4ATSMRO:

- 9.76 inches long x 0.675 inches diameter
- Approximate Weight = 0.44 lbs.

113A9307-4ATSMRO:

- 10.89 inches long x 0.675 inches diameter
- Approximate Weight = 0.46 lbs.

AIRCRAFT APPLICATION

Boeing 737-600/700/700C/800/900/900ER/8/9

PIVOT BOLT - #1, #2, #3, #6, #7 and #8

ATA Chapter: 27-51



113A9308-1



113A9208-1

PRODUCT DESCRIPTION

Component of the Flap Track Fairing Module that serves as an aft attach point to hold the corresponding Flap Track Fairing in place +D27

ATS PART NUMBER

113A9308-1ATSMRO

113A9208-1ATSMRO

OEM PART NUMBER

113A9308-1

113A9208-1

TECHNICAL SPECIFICATIONS

- FAA PMA PQ5315NM, Supplement 43
- Equivalent in fit, form and function to OEM assembly

- Annealed Bar material

113A9308-1ATSMRO:

- 11.22 inches long x 0.498 inches diameter.
- Approximate Weight = 0.37 lbs.

113A9208-1ATSMRO:

- 11.06 inches long x 0.623 inches diameter.
- Approximate Weight = 0.56 lbs.

AIRCRAFT APPLICATION

Boeing 737-600/700/700C/800/900/900ER/8/9

27: FLIGHT CONTROLS

BUSHING – POSITIONS #1, #2, #3, #6, #7 and #8

ATA Chapter: 27-51



113A9309-1



113A9209-1

PRODUCT DESCRIPTION

Component of the Flap Track Fairing Module that serves as an aft attach point to hold the corresponding Flap Track Fairings in place

P/N: 113A9309-1ATSMRO holds #3 and #6

P/N: 113A9209-1ATSMRO holds #1, #2, #7 and #8

ATS PART NUMBER

113A9309-1ATSMRO

113A9209-1ATSMRO

OEM PART NUMBER

113A9309-1

113A9209-1

TECHNICAL SPECIFICATIONS

- FAA PMA PQ5315NM, Supplement 43
- Equivalent in fit, form and function to OEM assembly

- Annealed Bar material

113A9309-1ATSMRO:

- 9.46-inches-long x 0.686 inches diameter
- Approximate Weight = 0.26 lbs.

113A9209-1ATSMRO:

- 8.72-inches-long x 0.874 inches diameter
- Approximate Weight = 0.41 lbs.

AIRCRAFT APPLICATION

Boeing 737-600/700/700C/800/900/900ER/8/9

AFT BULKHEAD – FLAP SUPPORT

ATA Chapter: 27-51, 57-53

113A9360-1ATSMRO



113A9360-2ATSMRO



PRODUCT DESCRIPTION

The Bulkhead Assy is a component of the inboard T/E flap AFT Fairing. It functions to support a link and rod assembly used to adjust clearance between the top surface of the AFT Fairing and T/E flap

ATS PART NUMBER

113A9360-1ATSMRO

113A9360-2ATSMRO

OEM PART NUMBER

113A9360-1

113A9360-2

TECHNICAL SPECIFICATIONS

- FAA PMA PQ5315NM, Supplement 101
- Equivalent in fit, form and function to OEM part

AIRCRAFT APPLICATION

Boeing 737-600/700/700C/800/900/900ER

27: FLIGHT CONTROLS

RUBSTRIP – AFT FAIRING, FLAP SUPPORT No. 3 and No. 6

ATA Chapter: 27-51



PRODUCT DESCRIPTION

Rubstrip is located on the inner face of the No. 3 and No. 6 Aft Fairings and act as a wear surface to the wing flap actuation structure

ATS PART NUMBER

113A9380-1ATSMRO
113A9380-2ATSMRO

OEM PART NUMBER

113A9380-1
113A9380-2

TECHNICAL SPECIFICATIONS

- FAA PMA PQ5315NM, Supplement 77.
- Equivalent in fit, form and function to OEM.
- Material: Delrin Sheet

AIRCRAFT APPLICATION

113A9380-1ATSMRO:

Boeing 737-600/700/700C/800/900/900ER

113A9380-2ATSMRO:

Boeing 737-700/700C/800/900ER/8/9

BEAM ASSEMBLY

ATA Chapter: 27-51, 57-50



PRODUCT DESCRIPTION

The Beam Assemblies are components of the Inboard Trailing Edge fixed lower panel assembly. The Beam Assy provides attachment points for adjustment rods, which can be adjusted to maintain a smooth aerodynamic surface where the fixed lower T/E panel transitions to the INBD flap

ATS PART NUMBER

115A2759Y5ATSMRO
115A2759Y6ATSMRO
115A2759Y13ATSMRO
115A2759Y14ATSMRO

OEM PART NUMBER

115A2759Y5
115A2759Y6
115A2759Y13
115A2759Y14

TECHNICAL SPECIFICATIONS

- FAA PMA PQ5315NM, Supplement 92
- Equivalent in fit, form and function to OEM part

AIRCRAFT APPLICATION

115A2759Y5ATSMRO & 115A2759Y6ATSMRO:

Boeing 737-600/700/700C/800/900

115A2759Y13ATSMRO &

115A2759Y14ATSMRO:

Boeing 737-600/700/700C/800/900ER/8/9/8200

27: FLIGHT CONTROLS

RETAINER

ATA Chapter: 27-51, 57-53



PRODUCT DESCRIPTION

Component of the Flap Track Fairing Module that serves as an aft attach point to hold the #1/#2/#3/#6/#7/#8 Flap Track Fairing in place

ATS PART NUMBER

69B14136-2ATSMRO

OEM PART NUMBER

69B14136-2

TECHNICAL SPECIFICATIONS

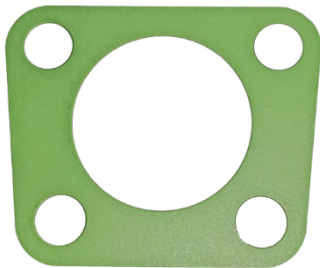
- Retainer (P/N: 69B14136-2ATSMRO) is a detail that feeds into Adjust Link Assembly (P/N: 113A9305-5ATSMRO, Supplement 24)

AIRCRAFT APPLICATION

Boeing 737-600/700/800/900/900ER/8

SHIM - LAMINATED

ATA Chapter: 27-51, 57-53



PRODUCT DESCRIPTION

Component of the Flap Track Fairing Module that serves as an aft attach point to hold the #1/#2/#3/#6/#7/#8 Flap Track Fairing in place

ATS PART NUMBER

69B14136-3ATSMRO

OEM PART NUMBER

69B14136-3

TECHNICAL SPECIFICATIONS

- Shim - Laminated (P/N: 69B14136-3ATSMRO) is a detail that feeds into Adjust Link Assembly (P/N: 113A9305-5ATSMRO, Supplement 24)

AIRCRAFT APPLICATION

Boeing 737-600/700/800/900/900ER/8

GIMBAL - POSITIONS #1, #2, #3, #6, #7 and #8

ATA Chapter: 27-51



PRODUCT DESCRIPTION

Part of the gimbal that moves the trailing edge flap surface. The gimbal connects the ballscrew nut and moves as the ballscrew turns. Two bushings join the ballscrew nut and gimbal

ATS PART NUMBER

ADU18-8ATSMRO

OEM PART NUMBER

ADU18-8

TECHNICAL SPECIFICATIONS

- FAA PMA PQ5315NM, Supplement 49
- Equivalent in fit, form and function to OEM assembly
- 1.5" x 1.0"
- Approximate Weight = 0.24 lbs.
- CRES bar material

AIRCRAFT APPLICATION

Boeing 737-600/700/700C/800/900/900ER/8/9
Boeing 757-200/200PF/200CB/300

27: FLIGHT CONTROLS

ELASTOMERIC BUSHING

ATA Chapter: 27-51



PRODUCT DESCRIPTION

Provides vibration dampening within the Fitting Sub-Assemblies - components of the trailing edge flap system

ATS PART NUMBER

SY10670ATSMRO

OEM PART NUMBER

SY10670

TECHNICAL SPECIFICATIONS

- FAA PMA PQ5315NM, Supplement 50.
- Equivalent in fit, form and function to OEM assembly
- 0.63" x 0.91" (1" Round Stock)
- Approximate Weight = 0.04 lbs.
- Stainless steel material

AIRCRAFT APPLICATION

Boeing 737-600/700/700C/800/900/900ER/8/9

HYDRAULIC FUSE HOUSING

ATA Chapter: 27-81, 29-11, 32-31, 78-34



7-2882-5

PRODUCT DESCRIPTION

Precision machined tube that houses a piston, metering cone, metering body, piston spring, metering cylinder and other parts to satisfy operation parameters indicated for its application

Housing typically replaced during overhaul or rebuild of Flow Rate Fuse Assembly. Each fuse configuration has been designed to accommodate specific dimensional, weight and hydraulic interface requirements

ATS PART NUMBER

7-2882-4ATS

7-2882-5ATS

7-2882-6ATS

OEM PART NUMBER

7-2882-4

7-2882-5

7-2882-6

TECHNICAL SPECIFICATIONS

- FAA PMA PQ5315NM, Supplement 1
- Equivalent in fit, form and function to OEM assembly
- -4: 4.45-inch-Long x 1.75-inch diameter
- -5: 5.17-inch-Long x 1.75-inch diameter
- -6: 5.78-inch-Long x 1.75-inch diameter
- Approximate Weight = 0.41 lbs.
- Aluminum material

AIRCRAFT APPLICATION

Boeing 737-300/400/500/600/700/700C/800/900/900ER

27: FLIGHT CONTROLS

RETAINER – KRUEGER SEAL

ATA Chapter: 27-81, 57-56



114A1811-1ATSMRO

114A1811-2ATSMRO

PRODUCT DESCRIPTION

The Retainer secures a Krueger Flap Seal. During Flap extension and retraction, the Krueger Seal protects the Thrust Reverser from abrading the Krueger Flap

ATS PART NUMBER

114A1811-1ATSMRO
114A1811-2ATSMRO

OEM PART NUMBER

114A1811-1
114A1811-2

TECHNICAL SPECIFICATIONS

- FAA PMA PQ5315NM, Supplement 103
- Equivalent in fit, form and function to OEM part

AIRCRAFT APPLICATION

Boeing 737-600/700/700C/800/900/900ER

WEAR PAD – KRUEGER SEAL

ATA Chapter: 27-81, 57-56



PRODUCT DESCRIPTION

The Wear Pad fastens to the Krueger Seal Retainer. During Flap extension and retraction, the Krueger Seal assembly protects the Thrust Reverser from abrading the Krueger Flap

ATS PART NUMBER

114A1811-3ATSMRO

OEM PART NUMBER

114A1811-3

TECHNICAL SPECIFICATIONS

- FAA PMA PQ5315NM, Supplement 103
- Equivalent in fit, form and function to OEM part

AIRCRAFT APPLICATION

Boeing 737-600/700/700C/800/900/900ER

28: FUEL

VORTEX GENERATOR

ATA Chapter: 28-12



PRODUCT DESCRIPTION

Reduces whining noise on approach

ATS PART NUMBER

780001-500-501

OEM PART NUMBER

N/A

TECHNICAL SPECIFICATIONS

- FAA PMA PQ5315NM, Supplement 14.
- Approval basis: STC ST02577SE
- Equivalent in fit, form and function to OEM assembly
- No impact to fuel overpressure protection ventilation system
- Installs in existing fastener holes on fuel vent panel – no drilling required
- Four generators required per plane, kit option available
- FAA and EASA approved

AIRCRAFT APPLICATION

Airbus A319, A320

VORTEX GENERATOR

ATA Chapter: 28-12



PRODUCT DESCRIPTION

Reduces whining noise on approach

ATS PART NUMBER

780001-500-503

OEM PART NUMBER

N/A

TECHNICAL SPECIFICATIONS

- FAA PMA PQ5315NM, Supplement 14
- Approval basis: STC ST02577SE
- Equivalent in fit, form and function to OEM assembly
- No impact to fuel overpressure protection ventilation system
- Installs in existing fastener holes on fuel vent panel – no drilling required
- Four generators required per plane, kit option available
- FAA and EASA approved

AIRCRAFT APPLICATION

Airbus A321

REFUELING STATION PANEL ASSEMBLY

ATA Chapter: 28-21



PRODUCT DESCRIPTION

Serves as a holding panel for Refueling Station Instruments

ATS PART NUMBER

654A0004-366ATSMRO

OEM PART NUMBER

654A0004-366

TECHNICAL SPECIFICATIONS

- FAA PMA PQ5315NM, Supplement 26
- Equivalent in fit, form and function to OEM assembly
- Aluminum construction with Skydrol™ resistant treatment

AIRCRAFT APPLICATION

Boeing 737-600/700/700C/800/900/900ER/8/9

© 2023 Aviation Technical Services – 8/2023



Trusted Partners
Supporting Flight

29: HYDRAULIC POWER

HYDRAULIC FUSE HOUSING

ATA Chapter: 29-11, 27-81, 32-31, 78-34



7-2882-5

PRODUCT DESCRIPTION

Precision machined tube that houses a piston, metering cone, metering body, piston spring, metering cylinder and other parts to satisfy operation parameters indicated for its application

Housing typically replaced during overhaul or rebuild of Flow Rate Fuse Assembly. Each fuse configuration has been designed to accommodate specific dimensional, weight and hydraulic interface requirements

ATS PART NUMBER

7-2882-4ATS
7-2882-5ATS
7-2882-6ATS

OEM PART NUMBER

7-2882-4
7-2882-5
7-2882-6

TECHNICAL SPECIFICATIONS

- FAA PMA PQ5315NM, Supplement 1
- Equivalent in fit, form and function to OEM assembly
- -4: 4.45-inch-Long x 1.75-inch diameter
- -5: 5.17-inch-Long x 1.75-inch diameter
- -6: 5.78-inch-Long x 1.75-inch diameter
- Approximate Weight = 0.41 lbs.
- Aluminum material

AIRCRAFT APPLICATION

Boeing 737-300/400/500/600/700/700C/800/900/900ER

RESERVOIR DEPRESSURIZATION VALVE ASSEMBLY

ATA Chapter: 29-11



PRODUCT DESCRIPTION

Releases system pressure in aircraft hydraulic reservoirs for maintenance or servicing

ATS PART NUMBER

HV22-31ATS

OEM PART NUMBER

HV22-31

TECHNICAL SPECIFICATIONS

- FAA PMA PQ5315NM, Supplement 28
- Equivalent in fit, form and function to OEM assembly
- Stainless steel construction with cadmium plate protective treatment

AIRCRAFT APPLICATION

Boeing 747-400
Boeing 757-200
Boeing 767-200/300
Boeing 777-200

29: HYDRAULIC POWER

CLAMP ASSY - HYDRAULIC SUPPORT

ATA Chapter: 29-11

272A0101-35ATSMRO



272A0101-38ATSMRO



272A0101-40ATSMRO



272A0101-126ATSMRO



PRODUCT DESCRIPTION

The Clamp Assy is a component of the hydraulic support clamp installation in the wing trailing edge. It supports hydraulic tubes, maintain static clearance between adjacent components, and attenuate vibration.

ATS PART NUMBER

272A0101-35ATSMRO
272A0101-38ATSMRO
272A0101-40ATSMRO
272A0101-126ATSMRO

OEM PART NUMBER

272A0101-35
272A0101-38
272A0101-40
272A0101-126

TECHNICAL SPECIFICATIONS

- FAA PMA PQ5315NM, Supplement 83, 106, 108, 118
- Equivalent in fit, form and function to OEM part

AIRCRAFT APPLICATION

272A0101-35, 272A0101-38, 272A0101-126

Boeing 737-700/800/8

272A0101-40

Boeing 737-700/800/8/9

29: HYDRAULIC POWER

CLAMP BLOCK – HYDRAULIC SUPPORT

ATA Chapter: 29-11



PRODUCT DESCRIPTION

The Clamp Blocks are installed on hydraulic lines in the wing trailing edge. They function to support and attenuate hydraulic tubes and maintain static clearance between tubes and equipment, wire bundles, and structure. In addition, they attenuate tube motion

ATS PART NUMBER

272A0111-60ATSMRO
272A0111-61ATSMRO
272A0111-62ATSMRO

OEM PART NUMBER

272A0111-60
272A0111-61
272A0111-62

TECHNICAL SPECIFICATIONS

- FAA PMA PQ5315NM, Supplement 106
- Equivalent in fit, form and function to OEM part

AIRCRAFT APPLICATION

Boeing 737-700/800/8

29: HYDRAULIC POWER

CLAMP BLOCK – HYDRAULIC SUPPORT

ATA Chapter: 29-11



PRODUCT DESCRIPTION

The Clamp Block Brackets are installed on hydraulic lines in the wing trailing edge. They function to support and attenuate hydraulic tubes and maintain static clearance between tubes and equipment, wire bundles, and structure. In addition, they attenuate tube motion

ATS PART NUMBER

272A0111-64ATSMRO
272A0111-71ATSMRO

OEM PART NUMBER

272A0111-64
272A0111-71

TECHNICAL SPECIFICATIONS

- FAA PMA PQ5315NM, Supplement 83
- Equivalent in fit, form and function to OEM part

AIRCRAFT APPLICATION

Boeing 737-600/700/700C/800/900/900ER/8/9

RESERVOIR PRESSURIZATION MANIFOLD

ATA Chapter: 29-20



PRODUCT DESCRIPTION

Controls pneumatic pressurization of aircraft hydraulic reservoirs

ATS PART NUMBER

732-11242ATS

OEM PART NUMBER

732-11242

TECHNICAL SPECIFICATIONS

- FAA PMA PQ5315NM, Supplement 12
- Equivalent in fit, form and function to OEM assembly
- Superior machined aluminum construction compared to cast aluminum OEM part
- Anodized for improved corrosion resistance

AIRCRAFT APPLICATION

Boeing 737-300/400/500
Boeing 747-100/200/200B/200C/200F/SP/SR
Boeing 757-200/200CB/200PF

29: HYDRAULIC POWER

FILTER CAP

ATA Chapter: 29-20



PRODUCT DESCRIPTION

Retains and provides access to the reservoir pressurization module filter

Component of the main hydraulic reservoir pressurization module

ATS PART NUMBER

732-11613ATS

OEM PART NUMBER

732-11613

TECHNICAL SPECIFICATIONS

- FAA PMA PQ5315NM, Supplement 4
- Equivalent in fit, form and function to OEM part
- Aluminum material
- Anodized finish for improved corrosion protection

AIRCRAFT APPLICATION

Boeing 747-200B/200C/200F/300/400/400D/400SP/400SR

Boeing 767-200/300

Boeing 777-200

© 2025 Aviation Technical Services – 3/2025



Trusted Partners
Supporting Flight

For more information contact:

sales@rangeraav.com

+1 972 245 6699

ATSmro.com

30: ICE AND RAIN PROTECTION

SPRING - COMPRESSION

ATA Chapter: 30-21, 75-10



PRODUCT DESCRIPTION

Located in the Engine Nose Cowl Thermal Anti-Ice (TAI) Valve, the Compression Spring is a component of the TAI valve body shaft. It compresses a self-aligning bearing and pre-loads it against the valve body to fix the bearing's position within the housing

ATS PART NUMBER

323660ATSMRO

OEM PART NUMBER

323660

TECHNICAL SPECIFICATIONS

- FAA PMA PQ5315NM, Supplement 97, 109
- Equivalent in fit, form and function to OEM

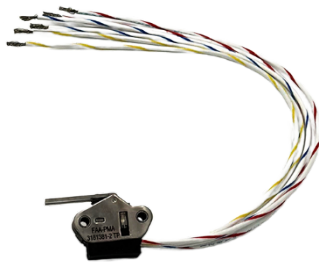
AIRCRAFT APPLICATION

Boeing MD-11F

Airbus A300 Model F4-605R

SWITCH

ATA Chapter: 30-21



PRODUCT DESCRIPTION

Component of Nose Cowl Anti-Ice Valve

ATS PART NUMBER

3181381-2TP

OEM PART NUMBER

3181381-2

TECHNICAL SPECIFICATIONS

- FAA PMA PQ5315NM, Supplement 63.
- Equivalent in fit, form and function to OEM

AIRCRAFT APPLICATION

Boeing 737-600/700/800/900

32: LANDING GEAR

HYDRAULIC FUSE HOUSING

ATA Chapter: 32-31, 27-81, 29-11, 78-34



7-2882-5

PRODUCT DESCRIPTION

Precision machined tube that houses a piston, metering cone, metering body, piston spring, metering cylinder and other parts to satisfy operation parameters indicated for its application

Housing typically replaced during overhaul or rebuild of Flow Rate Fuse Assembly. Each fuse configuration has been designed to accommodate specific dimensional, weight and hydraulic interface requirements

ATS PART NUMBER

7-2882-4ATS

7-2882-5ATS

7-2882-6ATS

OEM PART NUMBER

7-2882-4

7-2882-5

7-2882-6

TECHNICAL SPECIFICATIONS

- FAA PMA PQ5315NM, Supplement 1
- Equivalent in fit, form and function to OEM assembly
- -4: 4.45-inch-Long x 1.75-inch diameter
- -5: 5.17-inch-Long x 1.75-inch diameter
- -6: 5.78-inch-Long x 1.75-inch diameter
- Approximate Weight = 0.41 lbs.
- Aluminum material

AIRCRAFT APPLICATION

Boeing 737-300/400/500/600/700/700C/800/900/900ER

CUP WASHER

ATA Chapter: 32-32



PRODUCT DESCRIPTION

Lock washers keep respective threaded components from backing off during service

ATS PART NUMBER

734-17378ATS

OEM PART NUMBER

734-17378

TECHNICAL SPECIFICATIONS

- FAA PMA PQ5315NM, Supplement 2
- Equivalent in fit, form and function to OEM assembly
- Tested for Proof Pressure and Ultimate Pressure against OEM data
- Stainless steel material

AIRCRAFT APPLICATION

Boeing 777-200/300

CUP WASHER

ATA Chapter: 32-32



PRODUCT DESCRIPTION

Lock washers keep respective threaded components from backing off during service

ATS PART NUMBER

734-17379ATS

OEM PART NUMBER

734-17379

TECHNICAL SPECIFICATIONS

- FAA PMA PQ5315NM, Supplement 2
- Equivalent in fit, form and function to OEM assembly
- Tested for Proof Pressure and Ultimate Pressure against OEM data
- Stainless steel material

AIRCRAFT APPLICATION

Boeing 777-200/300

32: LANDING GEAR

CUP WASHER

ATA Chapter: 32-32



PRODUCT DESCRIPTION

Lock washers keep respective threaded components from backing off during service

ATS PART NUMBER

734-17382ATS

OEM PART NUMBER

734-17382

TECHNICAL SPECIFICATIONS

- FAA PMA PQ5315NM, Supplement 2
- Equivalent in fit, form and function to OEM assembly
- Tested for Proof Pressure and Ultimate Pressure against OEM data
- Stainless steel material

AIRCRAFT APPLICATION

Boeing 777-200/300

© 2023 Aviation Technical Services – 8/2023



Trusted Partners
Supporting Flight

For more information contact:

sales@rangeraav.com

+1 972 245 6699

ATSmro.com

33: LIGHTS

MAP LIGHT LENS ASSEMBLY

ATA Chapter: 33-10



PRODUCT DESCRIPTION

Component of the Cockpit Floodlight Assembly
Installs in multiple locations per aircraft

ATS PART NUMBER

16-0095-1ATSMRO

OEM PART NUMBER

16-0095-1

TECHNICAL SPECIFICATIONS

- FAA PMA PQ5315NM, Supplement 18
- Equivalent in fit, form and function to OEM map light assembly
- Light illumination is identical to OEM part
- Lexan Lens for excellent impact resistance and high optical quality
- Brass Cup Rivet for superior corrosion resistance
- Dimensions: 1.49" x 0.43"

AIRCRAFT APPLICATION

Boeing 737-300/400/500/600/700/700C/800/
900/900ER/8/9

Boeing 757-200/200PF/300

Boeing 767-300/300F

CARGO GRILLE LENS ASSEMBLY

ATA Chapter: 33-36



PRODUCT DESCRIPTION

Protects cargo compartment light assemblies
from impact damage

ATS PART NUMBER

15-0712-7ATSMRO

OEM PART NUMBER

15-0712-7

TECHNICAL SPECIFICATIONS

- FAA PMA PQ5315NM, Supplement 22
- Equivalent in fit, form and function to OEM assembly

AIRCRAFT APPLICATION

Boeing 737-600/700/700C/800/900

CARGO GRILLE LENS ASSEMBLY

ATA Chapter: 33-36



PRODUCT DESCRIPTION

Protects cargo compartment light assemblies
from impact damage

ATS PART NUMBER

15-0712-12ATSMRO

OEM PART NUMBER

15-0712-12

TECHNICAL SPECIFICATIONS

- FAA PMA PQ5315NM, Supplement 22
- Equivalent in fit, form and function to OEM assembly

AIRCRAFT APPLICATION

Boeing 737-600/700/800/900/900ER

© 2023 Aviation Technical Services – 8/2023



Trusted Partners
Supporting Flight

For more information contact:

sales@rangeraav.com

+1 972 245 6699

ATSmro.com

34: NAVIGATION

WIRE HARNESS W7193 – MARKER BEACON ANTENNA

ATA Chapter: 34-31



PRODUCT DESCRIPTION

The Marker Beacon Wire Harness provides an electrical connection between the marker beacon antenna and shipside wiring. The Marker Beacon assists in identifying distance to the runway

ATS PART NUMBER

286A7193-001ATSMRO

OEM PART NUMBER

286A7193-001

TECHNICAL SPECIFICATIONS

- FAA PMA PQ5315NM, Supplement 111
- Equivalent in fit, form and function to OEM part

AIRCRAFT APPLICATION

Boeing 737-600/700/800/900/900ER/8/9/8200

© 2025 Aviation Technical Services – 1/2025



Trusted Partners
Supporting Flight

For more information contact:

sales@rangeraav.com

+1 972 245 6699

ATSmro.com

36: PNEUMATIC

BRACKET ASSY - UPPER LEFT

ATA Chapter: 36-11, 71-00



PRODUCT DESCRIPTION

The Bracket Assy is installed to the Engine Fan Case/Frame, Flange A1. It provides support/stabilization to the Lower Pneumatic Starter Duct

ATS PART NUMBER

332A2930-7ATSMRO

OEM PART NUMBER

332A2930-7

TECHNICAL SPECIFICATIONS

- FAA PMA PQ5315NM, Supplement 107
- Equivalent in fit, form and function to OEM part

AIRCRAFT APPLICATION

Boeing 737-700/800

BRACKET ASSEMBLY

ATA Chapter: 36-13



212A1214-1ATSMRO



212A1214-3ATSMRO



212A1214-9ATSMRO

PRODUCT DESCRIPTION

The Bracket Assemblies locate and support the Wing Leading Edge Air Supply duct, inboard of the engine strut

ATS PART NUMBER

212A1214-1ATSMRO

212A1214-3ATSMRO

212A1214-9ATSMRO

OEM PART NUMBER

212A1214-1

212A1214-3

212A1214-9

TECHNICAL SPECIFICATIONS

- FAA PMA PQ5315NM, Supplement 94
- Equivalent in fit, form and function to OEM part

AIRCRAFT APPLICATION

212A1214-1ATSMRO:

Boeing 737-700/700C/800/900ER/8/9/8200

212A1214-3ATSMRO:

Boeing 737-600/700/700C/800/900/900ER

212A1214-9ATSMRO:

Boeing 737-600/700/700C/800/900/900ER

38: WATER / WASTE

FITTING – WATER TANK

ATA Chapter: 38-11, 53-42



PRODUCT DESCRIPTION

The Water Tank Fitting is a component of the Water/Waste Tank Enclosure in the Aft Cargo Compartment. It provides attach points for longitudinal angles, which in turn support the Water/Waste Tank Enclosure/Lining.

ATS PART NUMBER

143A8113U6ATSMRO

OEM PART NUMBER

143A8113U6

TECHNICAL SPECIFICATIONS

- FAA PMA PQ5315NM, Supplement 108
- Equivalent in fit, form and function to OEM part

AIRCRAFT APPLICATION

Boeing 737-700/800/8

BRACKET – AFT SILL DRAIN

ATA Chapter: 38-31



PRODUCT DESCRIPTION

Bracket is located between the STA967 and STA986.5 floor beam and provides support for the sill drain system

ATS PART NUMBER

417A2106-71ATSMRO

OEM PART NUMBER

417A2106-71

TECHNICAL SPECIFICATIONS

- FAA PMA PQ5315NM, Supplement 66.
- Equivalent in fit, form and function to OEM

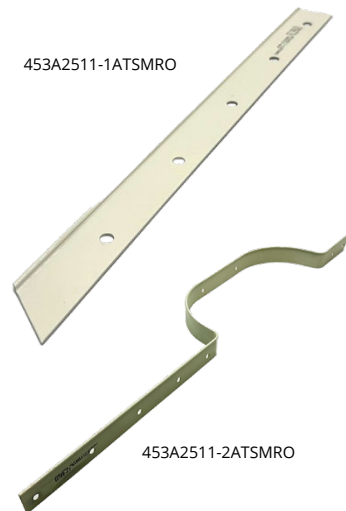
AIRCRAFT APPLICATION

Boeing 737-600/700/700C/800/900

50: CARGO & ACCESSORY COMPARTMENTS

CAPSTRIP, AFT CARGO LINER

ATA Chapter: 50-12



PRODUCT DESCRIPTION

The PMA articles are components of the Aft Cargo Compartment STA 731 Bulkhead Lining Installation. They install on the vertical flange of the bulkhead liner and function as a closeout, preventing moisture and debris intrusion

TECHNICAL SPECIFICATIONS

- FAA PMA PQ5315NM, Supplement 105
- Equivalent in fit, form and function to OEM part

AIRCRAFT APPLICATION

Boeing 737-700/800/8

ATS PART NUMBER

453A2511-1ATSMRO
453A2511-2ATSMRO

OEM PART NUMBER

453A2511-1
453A2511-2

© 2024 Aviation Technical Services – 8/2024



Trusted Partners
Supporting Flight

For more information contact:

sales@rangeraav.com

+1 972 245 6699

ATSmro.com

51: STANDARD PRACTICES AND STRUCTURES

FILLER – STA 796, AFT CARGO DOOR

ATA Chapter: 51-00, 53-13



PRODUCT DESCRIPTION

Function as a ramp in the upper corners of the scuff plates to the doorway to give a smooth transition for the door seal

ATS PART NUMBER

146A8344-1ATSMRO

OEM PART NUMBER

146A8344-1

TECHNICAL SPECIFICATIONS

- FAA PMA PQ5315NM, Supplement 65
- Equivalent in fit, form and function to OEM part

AIRCRAFT APPLICATION

Boeing 737-600/700/700C/800/900/900ER/8/9

FILLER – STA 846, AFT CARGO DOOR

ATA Chapter: 51-00, 53-13



PRODUCT DESCRIPTION

Function as a ramp in the upper corners of the scuff plates to the doorway to give a smooth transition for the door seal

ATS PART NUMBER

146A8344-2ATSMRO

OEM PART NUMBER

146A8344-2

TECHNICAL SPECIFICATIONS

- FAA PMA PQ5315NM, Supplement 65
- Equivalent in fit, form and function to OEM part

AIRCRAFT APPLICATION

Boeing 737-600/700/700C/800/900/900ER/8/9

52: DOORS

GUIDE TRACK ASSEMBLY - FWD ENTRY DOOR, STA 348.2

ATA Chapter: 52-11, 53-11



PRODUCT DESCRIPTION

Interfaces with the fwd entry door-side ball guide to ensure door is properly located during open/close

ATS PART NUMBER

141A6206-2ATSMRO

OEM PART NUMBER

141A6206-2

TECHNICAL SPECIFICATIONS

- FAA PMA PQ5315NM, Supplement 81
- Equivalent in fit, form and function to OEM assembly

AIRCRAFT APPLICATION

Boeing 737-600/700/800/900/900ER/8/9

SPIGOT - HINGE

ATA Chapter: 52-11



141A6271-3ATSMRO



141A6271-4ATSMRO

PRODUCT DESCRIPTION

The Spigots are part of the FWD LH Entry Door Hinge Assy, which is the primary support for the entry door during opening/closing operations. The Spigots support the weight of the door and transfer torque to/from the hinge arms to open and close the door

ATS PART NUMBER

141A6271-3ATSMRO

141A6271-4ATSMRO

OEM PART NUMBER

141A6271-3

141A6271-4

TECHNICAL SPECIFICATIONS

- FAA PMA PQ5315NM, Supplement 107
- Equivalent in fit, form and function to OEM part

AIRCRAFT APPLICATION

Boeing 737-600/700/700C/800/900/900ER/8/9

COVER PLATE ASSEMBLY

ATA Chapter: 52-11



PRODUCT DESCRIPTION

The PMA article is installed on the FWD LH Entry Door Lining. It functions to close out the cutout in the door liner where the interior door handle is installed, mitigating dust and debris intrusion

ATS PART NUMBER

411A2119-135AATSMRO

OEM PART NUMBER

411A2119-135A

TECHNICAL SPECIFICATIONS

- FAA PMA PQ5315NM, Supplement 104
- Equivalent in fit, form and function to OEM part

AIRCRAFT APPLICATION

Boeing 737-600/700/700C/800/900/900ER

52: DOORS

FITTING – AFT DOOR, STA 992.8

ATA Chapter: 52-11, 53-11



PRODUCT DESCRIPTION

Interfaces with the aft entry and galley door-side ball guide to ensure door is properly located during open/close

ATS PART NUMBER

654A0004-24ATSMRO

OEM PART NUMBER

654A0004-24
147A6158-1

TECHNICAL SPECIFICATIONS

- FAA PMA PQ5315NM, Supplement 81
- Equivalent in fit, form and function to OEM part

AIRCRAFT APPLICATION

Boeing 737-600/700/700C/800/900/900ER/8/9

FITTING – GALLEY DOOR, STA 328

ATA Chapter: 52-11, 53-11



PRODUCT DESCRIPTION

Interfaces with the fwd galley door-side ball guide to ensure door is properly located during open/close

ATS PART NUMBER

654A0004-28ATSMRO

OEM PART NUMBER

654A0004-28
141A6557-1

TECHNICAL SPECIFICATIONS

- FAA PMA PQ5315NM, Supplement 81
- Equivalent in fit, form and function to OEM part

AIRCRAFT APPLICATION

Boeing 737-600/700/700C/800/900/900ER/8/9

GUIDE ARM ASSEMBLY – AFT ENTRY GALLEY DOOR

ATA Chapter: 52-13



PRODUCT DESCRIPTION

The Entry and Galley Door Guide Arm Assembly's function to assist in guiding the doors when opening, closing, and in holding the doors open

ATS PART NUMBER

65-52854-7ATSMRO

OEM PART NUMBER

65-52854-7

TECHNICAL SPECIFICATIONS

- FAA PMA PQ5315NM, Supplement 84.
- Equivalent in fit, form, and function to OEM assembly

AIRCRAFT APPLICATION

Boeing 737-600/700/700C/800/900/900ER/8/9

52: DOORS

COVER PLATE ASSEMBLY

ATA Chapter: 52-13, 52-41



PRODUCT DESCRIPTION

Decorative cover for entry door handle

ATS PART NUMBER

411N2069-8BATSMRO (Soft White)
411N2069-8DATSMRO (Bright White)

OEM PART NUMBER

411N2069-8()

TECHNICAL SPECIFICATIONS

- FAA PMA PQ5315NM, Supplement 19
- Equivalent in fit, form and function to OEM assembly
- Available in multiple colors to match original

AIRCRAFT APPLICATION

Boeing 737-600/700/800/900ER/8/9

EVERLATCH™ CARGO DOOR LATCH – AFT & FWD

ATA Chapter: 52-31



PRODUCT DESCRIPTION

The EverLatch™ Cargo Door Latch by ATS is a cost-effective solution to a long-standing cargo door latch problem where operators experience fuselage skin and cargo door housing damage from sheared off nylon bumpers. The EverLatch is easy to install and is currently in service with airlines operating Boeing 737NGs

ATS PART NUMBER

718932-100-101 (AFT)
718932-111-101 (FWD)

OEM PART NUMBER

H414-53 (AFT)
H414-29 (FWD)

TECHNICAL SPECIFICATIONS

- FAA Certified Design under STC # ST02525SE, PMA obtained
- Direct replacement for OEM part at a reduced cost

AIRCRAFT APPLICATION

Boeing 737-600/700/700C/800/900/900ER/8

BALL CLUTCH SHAFT

ATA Chapter: 52-34



PRODUCT DESCRIPTION

Protects the Main Cargo Door Power Drive Unit when excessive torque is applied
Component of Main Cargo Door Hinge Power Drive Unit

ATS PART NUMBER

732-14281ATS

OEM PART NUMBER

732-14281

TECHNICAL SPECIFICATIONS

- FAA PMA PQ5315NM, Supplement 5
- Equivalent in fit, form and function to OEM assembly
- Carbonized to increase wear resistance
- Alloy steel material

AIRCRAFT APPLICATION

Boeing 757-200/200PF/200CB/767-200/300/300F/400ER

52: DOORS

GUIDE ARM ASSEMBLY – FWD GALLEY DOOR

ATA Chapter: 52-41



PRODUCT DESCRIPTION

The Entry and Galley Door Guide Arm Assembly's function to assist in guiding the doors when opening, closing, and in holding the doors open

ATS PART NUMBER

69-20321-4ATSMRO

OEM PART NUMBER

69-20321-4

TECHNICAL SPECIFICATIONS

- FAA PMA PQ5315NM, Supplement 84.
- Equivalent in fit, form, and function to OEM assembly

AIRCRAFT APPLICATION

Boeing 737-600/700/700C/800/900/900ER/8/9

ROD ASSEMBLY – A/C ACCESS DOOR SUPPORT

ATA Chapter: 52-48



PRODUCT DESCRIPTION

Used to manually hold the ECS Access Door in an open configuration during maintenance operations

ATS PART NUMBER

65-74573-3ATSMRO

OEM PART NUMBER

65-74573-3

TECHNICAL SPECIFICATIONS

- FAA PMA PQ5315NM, Supplement 55
- Equivalent in fit, form and function to OEM assembly

AIRCRAFT APPLICATION

Boeing 737-600/700/700C/800/900/900ER/8/9

HINGE ASSY – ECS ACCESS DOOR

ATA Chapter: 52-48



PRODUCT DESCRIPTION

The Hinge Assys are components of the ECS Access Door Assy. They function to allow the door to open and close during maintenance

ATS PART NUMBER

149A7234-1ATSMRO
149A7234-13ATSMRO
149A7234-14ATSMRO

OEM PART NUMBER

149A7234-1
149A7234-13
149A7234-14

TECHNICAL SPECIFICATIONS

- FAA PMA PQ5315NM, Supplement 106
- Equivalent in fit, form and function to OEM part

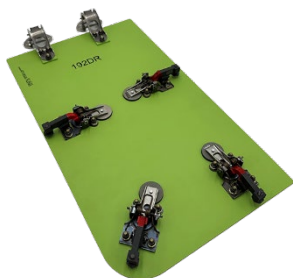
AIRCRAFT APPLICATION

Boeing 737-600Series/700 Series/700C Series/
800 Series/900 Series/900ER Series/
8/9/8200

52: DOORS

DOOR ASSEMBLY - HIGH PRESSURE AIR CONNECT

ATA Chapter: 52-48, 53-40



PRODUCT DESCRIPTION

Located at STA 540, RBL 14, the Door Assy is a component of the lower wing-to-body fairing skin panel. During maintenance it gives access to connect an external source of compressed air to the Pneumatic Manifold

ATS PART NUMBER

149A7241-9ATSMRO

OEM PART NUMBER

149A7241-9

TECHNICAL SPECIFICATIONS

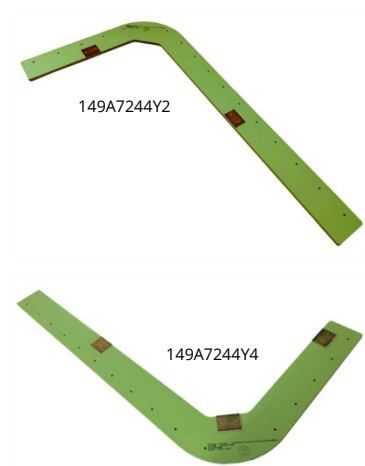
- FAA PMA PQ5315NM, Supplement 96
- Equivalent in fit, form and function to OEM part

AIRCRAFT APPLICATION

Boeing 737-700/700C/800/900ER/8/9/8200

DOUBLER ASSEMBLY

ATA Chapter: 52-48



PRODUCT DESCRIPTION

Doubler Assy provides a stiffening element for the composite Air Conditioning Access Door around the hole for the High Pressure Connect Access Door

ATS PART NUMBER

149A7244Y2ATSMRO

149A7244Y4ATSMRO

OEM PART NUMBER

149A7244-2, F8149A7244Y2

149A7244-4

TECHNICAL SPECIFICATIONS

- FAA PMA PQ5315NM, Supplement 40
- Equivalent in fit, form and function to OEM assembly

AIRCRAFT APPLICATION

Boeing 737-600/700/700C/800/900

52: DOORS

SPACER – VACUUM LAVATORY, SECTION 46

ATA Chapter: 52-49



PRODUCT DESCRIPTION

Spacer is located at two places on the hinges of the Waste Service Access Door, which provides the maintainer a source for servicing the waste storage tank

ATS PART NUMBER

146A7404-5ATSMRO

OEM PART NUMBER

146A7404-5

TECHNICAL SPECIFICATIONS

- FAA PMA PQ5315NM, Supplement 68.
- Equivalent in fit, form and function to OEM.
- Material: Aluminum Alloy

AIRCRAFT APPLICATION

Boeing 737-600/700/800/900/900ER/8/9

STIFFENER – WATER SERVICE PANEL, AFT CARGO COMPARTMENT

ATA Chapter: 52-49, 53-13



PRODUCT DESCRIPTION

Located between STA 907 and STA 927 and mounts to the supporting intercostals to provide additional stiffness to the water tank service panel support structure

ATS PART NUMBER

147A7221Y32ATSMRO

OEM PART NUMBER

147A7221Y32

TECHNICAL SPECIFICATIONS

- FAA PMA PQ5315NM, Supplement 69.
- Equivalent in fit, form and function to OEM.
- Material: Aluminum Alloy

AIRCRAFT APPLICATION

Boeing 737-600/700/700C/800/900/900ER/8/9

DOOR ASSEMBLY – FWD FAIRING ACCESS

ATA Chapter: 52-49, 53-30, 53-51



PRODUCT DESCRIPTION

The Door Assembly is located between STA 520 and STA 540 on the belly of the aircraft, and provides access to the ground conditioned air connector

ATS PART NUMBER

149A7148-23ATSMRO

OEM PART NUMBER

149A7148-23

TECHNICAL SPECIFICATIONS

- FAA PMA PQ5315NM, Supplement 85.
- Equivalent in fit, form, and function to OEM assembly

AIRCRAFT APPLICATION

Boeing 737-700/700C/800/900ER/8/9

52: DOORS

HOLD OPEN STRUT ASSEMBLY

ATA Chapter: 52-49



PRODUCT DESCRIPTION

A strut for holding the Aft Fairing Brake Accumulator Door open during maintenance procedures

ATS PART NUMBER

149A7564-2ATSMRO

OEM PART NUMBER

149A7564-2

TECHNICAL SPECIFICATIONS

- FAA PMA PQ5315NM, Supplement 30
- Equivalent in fit, form and function to OEM assembly
- Attaches to the Aft Fairing Brake Accumulator Door
- Stows securely against the inner surface of the door for flight

AIRCRAFT APPLICATION

Boeing 737-600/700/700C/800/900/900ER/8

BRACKET ASSEMBLY – BRAKE ACCUMULATOR DOOR

ATA Chapter: 52-49



PRODUCT DESCRIPTION

The Bracket Assy is installed on the Aft Fairing Brake Accumulator Access Door, a component of the Wing-to-Body Fairing. It acts as an attachment/hinge point for a strut to secure the door while open during maintenance or inspection

ATS PART NUMBER

149A7565Y3ATSMRO

OEM PART NUMBER

149A7565Y3

TECHNICAL SPECIFICATIONS

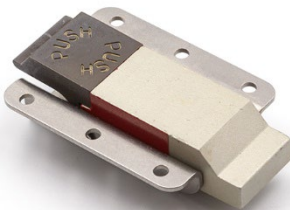
- FAA PMA PQ5315NM, Supplement 116
- Equivalent in fit, form and function to OEM part

AIRCRAFT APPLICATION

Boeing 737-700/800/900/900ER/8

FORWARD FAIRING ACCESS DOOR LATCH ASSEMBLY

ATA Chapter: 52-49



PRODUCT DESCRIPTION

Allow aircraft maintenance personnel to open and/or secure FWD Fairing Access Door

ATS PART NUMBER

H498-9-163-200ATS

OEM PART NUMBER

H498-9-163-200

TECHNICAL SPECIFICATIONS

- FAA PMA PQ5315NM, Supplement 13 and 17
- Equivalent in fit, form and function to OEM assembly
- Red handle paint indicates an improperly-secured latch

AIRCRAFT APPLICATION

Boeing 737-600/700/700C/800/900/900ER/8/9

53: FUSELAGE

INTERCOSTAL – AFT CARGO BAY

ATA Chapter: 53-00



PRODUCT DESCRIPTION

Located between STA 827 and STA 847 in the Aft Cargo Bay. Primarily acts as a stiffening element to protect the surrounding structure from incidental damage

ATS PART NUMBER

146A7505U8ATSMRO

OEM PART NUMBER

146A7505-8

TECHNICAL SPECIFICATIONS

- FAA PMA PQ5315NM, Supplement 73.
- Equivalent in fit, form and function to OEM.
- Material: Aluminum Alloy

AIRCRAFT APPLICATION

Boeing 737-600/700/700C/900/900ER

WEB – AFT CARGO DOOR SURROUND

ATA Chapter: 53-00



PRODUCT DESCRIPTION

Sits under the Scuff Plate of the Aft Cargo Door. Primarily acts as a lower frame of the door and provides an attach point for the Scuff Plate, which protects the underlying structure from environmental effects

ATS PART NUMBER

146A8123U25ATSMRO

OEM PART NUMBER

146A8123-25
146A8123U25

TECHNICAL SPECIFICATIONS

- FAA PMA PQ5315NM, Supplement 73.
- Equivalent in fit, form and function to OEM.
- Material: Aluminum Alloy

AIRCRAFT APPLICATION

Boeing 737-700/700C/800/900ER/8/9

ANGLE – AFT CARGO DOOR SURROUND

ATA Chapter: 53-00



PRODUCT DESCRIPTION

Installs onto the Aft Cargo Door Sill Web to increase structural stability and stiffness of the assembly. Also provides additional attach points for the Scuff Plate

ATS PART NUMBER

146A8125U53ATSMRO

OEM PART NUMBER

146A8125-53

TECHNICAL SPECIFICATIONS

- FAA PMA PQ5315NM, Supplement 73.
- Equivalent in fit, form and function to OEM.
- Material: Aluminum Alloy

AIRCRAFT APPLICATION

Boeing 737-600/700/700C/800/900/900ER/8/9

53: FUSELAGE

SHIELD ASSEMBLY – AFT CARGO DOOR SURROUND

ATA Chapter: 53-00



PRODUCT DESCRIPTION

Installs above the Aft Cargo Door Sill Web/Angle. Primarily acts as a continuation of the Scuff Plate to provide additional environmental protection and to distribute cargo/personnel loading to avoid incidental flange bending of the underlying floor structure

ATS PART NUMBER

146A8127U5ATSMRO

OEM PART NUMBER

146A8127-5
146A8127Y5

TECHNICAL SPECIFICATIONS

- FAA PMA PQ5315NM, Supplement 73.
- Equivalent in fit, form and function to OEM.
- Material: Aluminum Alloy

AIRCRAFT APPLICATION

Boeing 737-600/700/700C/800/900

STRAP – AFT CARGO DOOR SURROUND

ATA Chapter: 53-00



PRODUCT DESCRIPTION

Component of the Aft Cargo Door larger Lower Main Sill Assembly and interfaces between the Scuff Plate and Sill Web. Primarily acts as a stiffening element along the Sill web

ATS PART NUMBER

146A8128U14ATSMRO

OEM PART NUMBER

146A8128-14
146A8128U14
146A8128Y14

TECHNICAL SPECIFICATIONS

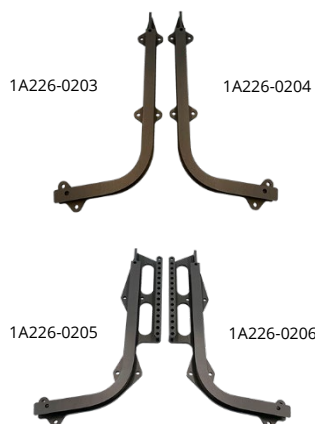
- FAA PMA PQ5315NM, Supplement 73.
- Equivalent in fit, form and function to OEM.
- Material: Aluminum Alloy

AIRCRAFT APPLICATION

Boeing 737-600/700/700C/800/900/900ER/8/9

FLIGHT DECK SEAT TRACKS

ATA Chapter: 53-10, 25-11



PRODUCT DESCRIPTION

Shorter lead time and less cost replacement parts for flight deck seat tracks as compared to OEM components

ATS PART NUMBER

1A226-0201ATSMRO / 1A226-0202ATSMRO
1A226-0203ATSMRO / 1A226-0204ATSMRO
1A226-0205ATSMRO / 1A226-0206ATSMRO
1A296-0339ATSMRO / 1A296-0340ATSMRO

OEM PART NUMBER

1A226-0201 / 1A226-0202
1A226-0203 / 1A226-0204
1A226-0205 / 1A226-0206
1A296-0339 / 1A296-0340

TECHNICAL SPECIFICATIONS

- FAA PMA PQ5315NM, Supplement 59
- Equivalent in fit, form and function to OEM

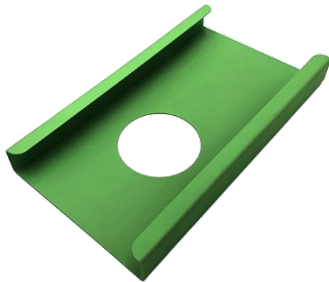
AIRCRAFT APPLICATION

Boeing 737-600/700/700C/800/900/900ER/8/9

53: FUSELAGE

CHANNEL - FLIGHT DECK

ATA Chapter: 53-10



PRODUCT DESCRIPTION

As a component of the flight compartment floor step assembly, the Channel provides support and attachment for a removable access panel which permits access for internal zonal inspections

ATS PART NUMBER

141A5211U1ATSMRO

OEM PART NUMBER

141A5211U1

TECHNICAL SPECIFICATIONS

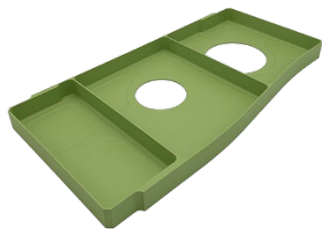
- FAA PMA PQ5315NM, Supplement 78.
- Equivalent in fit, form and function to OEM.
- Material: Aluminum Alloy

AIRCRAFT APPLICATION

Boeing 737-600/700/700C/800/900/900ER

INTERCOSTAL

ATA Chapter: 53-10



PRODUCT DESCRIPTION

The PMA article is located at BL 0, spanning the STA 344 to STA 360 floor beams the passenger cabin. It transfers loads into the floor beams and provides attachment and support for floor panels

ATS PART NUMBER

141A5410U23ATSMRO

OEM PART NUMBER

141A5410U23

TECHNICAL SPECIFICATIONS

- FAA PMA PQ5315NM, Supplement 105
- Equivalent in fit, form and function to OEM part

AIRCRAFT APPLICATION

Boeing 737-600/700/700C/800/900/900ER

INTERCOSTAL - SECTION 41

ATA Chapter: 53-10



PRODUCT DESCRIPTION

The Intercostals are located in the Section 41 cabin floor and function to stiffen the adjacent floor structure and support floor panels

ATS PART NUMBER

141A5410U139ATSMRO
141A5410U141ATSMRO

OEM PART NUMBER

141A5410U139
141A5410U141

TECHNICAL SPECIFICATIONS

- FAA PMA PQ5315NM, Supplement 101
- Equivalent in fit, form and function to OEM part

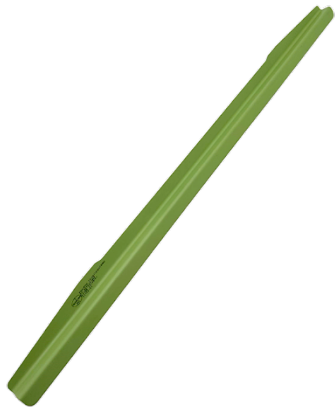
AIRCRAFT APPLICATION

Boeing 737-600/700/700C/800/900/900ER/
8/9/8200

53: FUSELAGE

CHORD – ZEE, FORWARD ENTRY DOOR SILL

ATA Chapter: 53-10



PRODUCT DESCRIPTION

Formed stiffener installed on the Lower Main Sill web of Forward Entry Door, as component of the Section 41 Door Surround Structure. The Zee Chord primarily function as a support and attachment point for the Center Scuff Plate with Lower Sill web

ATS PART NUMBER

141A8112U2ATSMRO

OEM PART NUMBER

141A8112-2

TECHNICAL SPECIFICATIONS

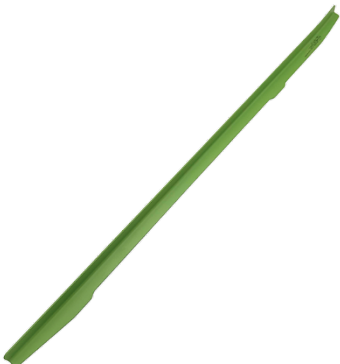
- FAA PMA PQ5315NM, Supplement 62.
- Equivalent in fit, form and function to OEM.
- Material: Aluminum Alloy

AIRCRAFT APPLICATION

Boeing 737-600/700/700C/800/900/900ER/8/9

ANGLE – FORWARD ENTRY DOOR SILL

ATA Chapter: 53-10



PRODUCT DESCRIPTION

Formed stiffener installed on the Lower Main Sill web of Forward Entry Door, as component of the Section 41 Door Surround Structure. The Zee Chord primarily function as a support and attachment point for the Center Scuff Plate with Lower Sill web

ATS PART NUMBER

141A8112U20ATSMRO

OEM PART NUMBER

141A8112-20

TECHNICAL SPECIFICATIONS

- FAA PMA PQ5315NM, Supplement 62.
- Equivalent in fit, form and function to OEM.
- Material: Aluminum Alloy

AIRCRAFT APPLICATION

Boeing 737-600/700/700C/800/900/900ER/8/9

ANGLE – FORWARD ENTRY DOOR SILL

ATA Chapter: 53-10

PRODUCT DESCRIPTION

Formed stiffener installed on the Lower Main Sill web of Galley Door, as component of the Section 41 Door Surround Structure. The Zee Chord primarily function as a support and attachment point for the Center Scuff Plate with Lower Sill web

ATS PART NUMBER

141A8312U5ATSMRO

OEM PART NUMBER

141A8312-5
141A8312Y5

TECHNICAL SPECIFICATIONS

- FAA PMA PQ5315NM, Supplement 62.
- Equivalent in fit, form and function to OEM.
- Material: Aluminum Alloy

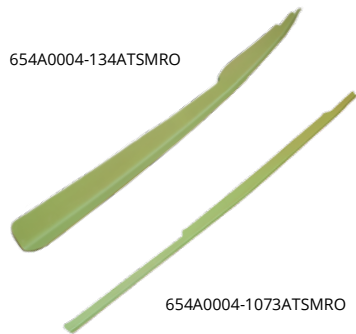
AIRCRAFT APPLICATION

Boeing 737-600/700/700C/800/900/900ER/8/9

53: FUSELAGE

INNER CHORD – GALLERY DOOR MOPSILL

ATA Chapter: 53-10



PRODUCT DESCRIPTION

Components of Section 41 Door Surround Structure

ATS PART NUMBER

654A0004-134ATSMRO
654A0004-1073ATSMRO

OEM PART NUMBER

654A0004-134
654A0004-1073

TECHNICAL SPECIFICATIONS

- FAA PMA PQ5315NM, Supplement 54
- Equivalent in fit, form and function to OEM part
- Current OEM ICA information is applicable to parts

AIRCRAFT APPLICATION

Boeing 737-600/700/800/900/900ER/8/9

PANEL, REMOVABLE – FLIGHT DECK

ATA Chapter: 53-10



PRODUCT DESCRIPTION

As a component of the flight compartment floor, the removable panel permits access for internal zonal inspections. In addition, the panel acts as a floor web in the crew area

ATS PART NUMBER

141A5133U15ATSMRO

OEM PART NUMBER

141A5133U15

TECHNICAL SPECIFICATIONS

- FAA PMA PQ5315NM, Supplement 78.
- Equivalent in fit, form and function to OEM.
- Material: Aluminum Alloy

AIRCRAFT APPLICATION

Boeing 737-600/700/700C/800/900/900ER/8/9

INTERCOSTAL, LAV A SUPPORT

ATA Chapter: 53-10



PRODUCT DESCRIPTION

Spans between floor beams to stiffen the floor structure. Supports one of four lavatory A floor fitting attach points

ATS PART NUMBER

141A5690U1ATSMRO

OEM PART NUMBER

141A5690-1
141A5690U1
141A5690Y1

TECHNICAL SPECIFICATIONS

- FAA PMA PQ5315NM, Supplement 80
- Equivalent in fit, form and function to OEM part

AIRCRAFT APPLICATION

Boeing 737-600/700/700C/800/900/900ER

53: FUSELAGE

GUIDE TRACK ASSEMBLY – FWD ENTRY DOOR, STA 348.2

ATA Chapter: 53-11, 52-11



PRODUCT DESCRIPTION

Interfaces with the fwd entry door-side ball guide to ensure door is properly located during open/close

ATS PART NUMBER

141A6206-2ATSMRO

OEM PART NUMBER

141A6206-2

TECHNICAL SPECIFICATIONS

- FAA PMA PQ5315NM, Supplement 81
- Equivalent in fit, form and function to OEM assembly

AIRCRAFT APPLICATION

Boeing 737-600/700/800/900/900ER/8/9

BRACKET ASSEMBLY – STA 727 BULKHEAD

ATA Chapter: 53-11



PRODUCT DESCRIPTION

Located on the STA 727 Wheel Well Bulkhead and provides support for the 453A1210-() Shroud

ATS PART NUMBER

144A9401U20ATSMRO

OEM PART NUMBER

144A9401U20

TECHNICAL SPECIFICATIONS

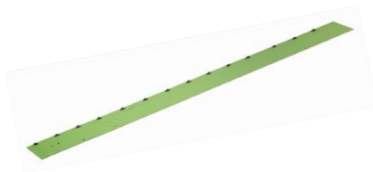
- FAA PMA PQ5315NM, Supplement 78.
- Equivalent in fit, form and function to OEM.
- Material: Clad Aluminum Sheet

AIRCRAFT APPLICATION

Boeing 737-600/700/700C/800/900/900ER/8/9

AFT REVEAL ASSEMBLY

ATA Chapter: 53-11



PRODUCT DESCRIPTION

Component of the Aft Cargo Door Surround Structure. Primary function is to hold a section of the lining of the cargo compartment in place

ATS PART NUMBER

146A9403-237ATSMRO

OEM PART NUMBER

146A9403-237

TECHNICAL SPECIFICATIONS

- FAA PMA PQ5315NM, Supplement 15
- Equivalent in fit, form and function to OEM assembly
- Aluminum material

AIRCRAFT APPLICATION

Boeing 737-600/700/700C/800/900/900ER/8/9

53: FUSELAGE

FITTING – AFT DOOR, STA 992.8

ATA Chapter: 53-11, 52-11



PRODUCT DESCRIPTION

Interfaces with the aft entry and galley door-side ball guide to ensure door is properly located during open/close

ATS PART NUMBER

654A0004-24ATSMRO

OEM PART NUMBER

654A0004-24
147A6158-1

TECHNICAL SPECIFICATIONS

- FAA PMA PQ5315NM, Supplement 81
- Equivalent in fit, form and function to OEM part

AIRCRAFT APPLICATION

Boeing 737-600/700/700C/800/900/900ER/8/9

FITTING – GALLEY DOOR, STA 328

ATA Chapter: 53-11, 52-11



PRODUCT DESCRIPTION

Interfaces with the fwd galley door-side ball guide to ensure door is properly located during open/close

ATS PART NUMBER

654A0004-28ATSMRO

OEM PART NUMBER

654A0004-28
141A6557-1

TECHNICAL SPECIFICATIONS

- FAA PMA PQ5315NM, Supplement 81
- Equivalent in fit, form and function to OEM part

AIRCRAFT APPLICATION

Boeing 737-600/700/700C/800/900/900ER/8/9

FILLER – STA 796, AFT CARGO DOOR

ATA Chapter: 53-13, 51-00



PRODUCT DESCRIPTION

Function as a ramp in the upper corners of the scuff plates to the doorway to give a smooth transition for the door seal

ATS PART NUMBER

146A8344-1ATSMRO

OEM PART NUMBER

146A8344-1

TECHNICAL SPECIFICATIONS

- FAA PMA PQ5315NM, Supplement 65
- Equivalent in fit, form and function to OEM part

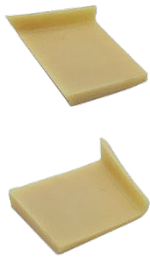
AIRCRAFT APPLICATION

Boeing 737-600/700/700C/800/900/900ER/8/9

53: FUSELAGE

FILLER – STA 846, AFT CARGO DOOR

ATA Chapter: 53-13, 51-00



PRODUCT DESCRIPTION

Function as a ramp in the upper corners of the scuff plates to the doorway to give a smooth transition for the door seal

ATS PART NUMBER

146A8344-2ATSMRO

OEM PART NUMBER

146A8344-2

TECHNICAL SPECIFICATIONS

- FAA PMA PQ5315NM, Supplement 65
- Equivalent in fit, form and function to OEM part

AIRCRAFT APPLICATION

Boeing 737-600/700/700C/800/900/900ER/8/9

STIFFENER – WATER SERVICE PANEL, AFT CARGO COMPARTMENT

ATA Chapter: 53-13, 52-49



PRODUCT DESCRIPTION

Located between STA 907 and STA 927 and mounts to the supporting intercostals to provide additional stiffness to the water tank service panel support structure.

ATS PART NUMBER

147A7221Y32ATSMRO

OEM PART NUMBER

147A7221Y32

TECHNICAL SPECIFICATIONS

- FAA PMA PQ5315NM, Supplement 69.
- Equivalent in fit, form and function to OEM.
- Material: Aluminum Alloy

AIRCRAFT APPLICATION

Boeing 737-600/700/700C/800/900/900ER/8/9

ANGLE, FLOOR BOARD & CHORD – UPPER

ATA Chapter: 53-30



143A5410-170ATSMRO

143A5410U174ATSMRO

PRODUCT DESCRIPTION

The Angle is located in the Section 43 main deck floor structure, and stiffens the adjacent floor structure while providing a means of attachment for the floor panels.

The Upper Chord is located in the Section 43 main deck floor structure, and stiffens the adjacent floor structure while providing a means of attachment for the floor panels

ATS PART NUMBER

Angle, Floor Board

143A5410-170ATSMRO

Chord – Upper

143A5410U174ATSMRO

OEM PART NUMBER

143A5410-170

143A5410U174

TECHNICAL SPECIFICATIONS

- FAA PMA PQ5315NM, Supplement 107
- Equivalent in fit, form and function to OEM part

AIRCRAFT APPLICATION

Boeing 737-700/800/8

53: FUSELAGE

SIDEPLATE CHANNEL ASSEMBLY – CARGO FLOOR SUPPORT, SECTION 43

ATA Chapter: 53-30



PRODUCT DESCRIPTION

Component of the Forward Cargo Compartment floor structure. Primarily provides a means of retention for the cargo compartment floor and sidewall panels

ATS PART NUMBER

143A7501U186ATSMRO

OEM PART NUMBER

143A7501U186

TECHNICAL SPECIFICATIONS

- FAA PMA PQ5315NM, Supplement 70.
- Equivalent in fit, form and function to OEM.
- Material: Aluminum Alloy

AIRCRAFT APPLICATION

Boeing 737-700/700C

CHANNEL ASSEMBLY – FWD CARGO FLOOR

ATA Chapter: 53-30



PRODUCT DESCRIPTION

The Channel Assy is located in the FWD Cargo Compartment and provides a means of attachment between the floor and sidewall panels in Section 43

ATS PART NUMBER

143A7501U188ATSMRO

OEM PART NUMBER

143A7501U188

TECHNICAL SPECIFICATIONS

- FAA PMA PQ5315NM, Supplement 121
- Equivalent in fit, form and function to OEM part

AIRCRAFT APPLICATION

Boeing 737-800/8

53: FUSELAGE

CLIP – CARGO FLOOR

ATA Chapter: 53-30, 53-42



PRODUCT DESCRIPTION

The Clips are a component of the Section 43 Cargo Floor Support Installation and attach outboard baffle assemblies to various frames

ATS PART NUMBER

143A7502U159ATSMRO
143A7502U160ATSMRO

OEM PART NUMBER

143A7502U159
143A7502U160

TECHNICAL SPECIFICATIONS

- FAA PMA PQ5315NM, Supplement 90
- Equivalent in fit, form, and function to OEM assembly

AIRCRAFT APPLICATION

Boeing 737-600/700/700C/800/900ER/8/9/8200

BAFFLE ASSEMBLY – FORWARD CARGO FLOOR

ATA Chapter: 53-30



PRODUCT DESCRIPTION

Components of the forward cargo compartment floor structure. Primary function is to add stiffness to the sideplate channels between the fuselage frames and provide a means of retention for the cargo compartment sidewall liners

ATS PART NUMBER

143A7510-9ATSMRO

OEM PART NUMBER

143A7510-9

TECHNICAL SPECIFICATIONS

- FAA PMA PQ5315NM, Supplement 76.
- Equivalent in fit, form and function to OEM.
- Material: Aluminum

AIRCRAFT APPLICATION

Boeing 737-600/700/700C/800/900/900ER/8/9

BAFFLE ASSEMBLY – FORWARD CARGO FLOOR

ATA Chapter: 53-30



PRODUCT DESCRIPTION

Components of the forward cargo compartment floor structure. Primary function is to add stiffness to the sideplate channels between the fuselage frames and provide a means of retention for the cargo compartment sidewall liners.

ATS PART NUMBER

143A7510-15ATSMRO

OEM PART NUMBER

143A7510-15

TECHNICAL SPECIFICATIONS

- FAA PMA PQ5315NM, Supplement 76.
- Equivalent in fit, form and function to OEM.
- Material: Aluminum

AIRCRAFT APPLICATION

Boeing 737-700/700C

53: FUSELAGE

BAFFLE ASSEMBLY – FORWARD CARGO FLOOR

ATA Chapter: 53-30



PRODUCT DESCRIPTION

Components of the forward cargo compartment floor structure. Primary function is to add stiffness to the sideplate channels between the fuselage frames and provide a means of retention for the cargo compartment sidewall liners.

ATS PART NUMBER

143A7510-21ATSMRO

OEM PART NUMBER

143A7510-21

TECHNICAL SPECIFICATIONS

- FAA PMA PQ5315NM, Supplement 76.
- Equivalent in fit, form and function to OEM.
- Material: Aluminum

AIRCRAFT APPLICATION

Boeing 737-800/900/900ER/8/9

BAFFLE ASSEMBLY – FORWARD CARGO FLOOR

ATA Chapter: 53-30



PRODUCT DESCRIPTION

Components of the forward cargo compartment floor structure. Primary function is to add stiffness to the sideplate channels between the fuselage frames and provide a means of retention for the cargo compartment sidewall liners.

ATS PART NUMBER

143A7510-22ATSMRO

OEM PART NUMBER

143A7510-22

TECHNICAL SPECIFICATIONS

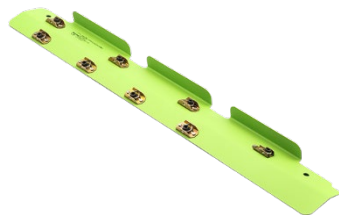
- FAA PMA PQ5315NM, Supplement 76.
- Equivalent in fit, form and function to OEM.
- Material: Aluminum

AIRCRAFT APPLICATION

Boeing 737-800/900/900ER/8/9

SHIELD ASSEMBLY

ATA Chapter: 53-30



PRODUCT DESCRIPTION

Attachment points for floor and sidewall panels of the forward cargo bay

ATS PART NUMBER

143A8126U21ATSMRO

OEM PART NUMBER

143A8126U21

TECHNICAL SPECIFICATIONS

- FAA PMA PQ5315NM, Supplement 34
- Equivalent in fit, form and function to OEM assembly
- 143A8126U21ATSMRO installs forward of the forward cargo bay door

AIRCRAFT APPLICATION

Boeing 737-700/700C/800/900/900ER/8/9

53: FUSELAGE

SHIELD ASSEMBLY

ATA Chapter: 53-30



PRODUCT DESCRIPTION

Attachment points for floor and sidewall panels of the forward cargo bay

ATS PART NUMBER

143A8126U31ATSMRO

OEM PART NUMBER

143A8126U31

TECHNICAL SPECIFICATIONS

- FAA PMA PQ5315NM, Supplement 34
- Equivalent in fit, form and function to OEM assembly
- 143A8126U31ATSMRO installs aft of the forward cargo bay door

AIRCRAFT APPLICATION

Boeing 737-700/700C

SHIELD ASSEMBLY

ATA Chapter: 53-30

PRODUCT DESCRIPTION

The Shield Assy provides a means of retention for the cargo compartment floor panels and sidewall liners

ATS PART NUMBER

143A8126Y38ATSMRO

OEM PART NUMBER

143A8126-38

TECHNICAL SPECIFICATIONS

- FAA PMA PQ5315NM, Supplement 91
- Equivalent in fit, form, and function to OEM assembly

AIRCRAFT APPLICATION

Boeing 737-800/900ER/8/9/8200

SCUFF PLATE - FORWARD CARGO DOOR

ATA Chapter: 53-30



PRODUCT DESCRIPTION

Components of the cargo doorway lower main sill. Primarily designed to resist impact damage from cargo and protect underlying structure from environmental effects.

ATS PART NUMBER

143A8333-8ATSMRO

OEM PART NUMBER

143A8333-8

TECHNICAL SPECIFICATIONS

- FAA PMA PQ5315NM, Supplement 75.
- Equivalent in fit, form and function to OEM.
- Material: Titanium

AIRCRAFT APPLICATION

Boeing 737-600/700/700C/800/900/900ER/8/9

53: FUSELAGE

AFT REVEAL ASSEMBLY – FORWARD CARGO DOOR SURROUND

ATA Chapter: 53-30



PRODUCT DESCRIPTION

Consists of a flat sheet of aluminum with nutplates and a strip of Skyflex tape to provide a seal at the frame inner chord installation. Primarily acts as a scuff plate to protect the aft edge of the Forward Cargo Door Surround from cargo damage.

ATS PART NUMBER

143A9403U188ATSMRO

OEM PART NUMBER

143A9403-188
143A9403U188
143A9403Y188

TECHNICAL SPECIFICATIONS

- FAA PMA PQ5315NM, Supplement 72.
- Equivalent in fit, form and function to OEM.
- Material: Aluminum Alloy

AIRCRAFT APPLICATION

Boeing 737-600/700/700C/800/900/900ER/8/9

CLIP – BULKHEAD SUPPORT

ATA Chapter: 53-30



PRODUCT DESCRIPTION

The PMA article is a component of the Fwd Cargo Compartment, Aft Bulkhead structure. It functions to support the Aft Bulkhead structure by connecting the frame of the Bulkhead to the left and right Rail Assys. These in turn provide a means for the Bulkhead Panel attachment

ATS PART NUMBER

143A9485U21ATSMRO

OEM PART NUMBER

143A9485U21

TECHNICAL SPECIFICATIONS

- FAA PMA PQ5315NM, Supplement 105
- Equivalent in fit, form and function to OEM part

AIRCRAFT APPLICATION

Boeing 737-700/800/900ER/8/9

DOOR ASSEMBLY – FWD FAIRING ACCESS

ATA Chapter: 53-30, 52-49, 53-51



PRODUCT DESCRIPTION

The Door Assembly is located between STA 520 and STA 540 on the belly of the aircraft, and provides access to the ground conditioned air connector.

ATS PART NUMBER

149A7148-23ATSMRO

OEM PART NUMBER

149A7148-23

TECHNICAL SPECIFICATIONS

- FAA PMA PQ5315NM, Supplement 85.
- Equivalent in fit, form, and function to OEM assembly

AIRCRAFT APPLICATION

Boeing 737-700/700C/800/900ER/8/9

53: FUSELAGE

CAPSTRIP – FWD CARGO FLOOR

ATA Chapter: 53-30



PRODUCT DESCRIPTION

Forward cargo bay floor-to-sidewall capstrips

ATS PART NUMBER

453A1611-6ATSMRO
453A1611-9ATSMRO
453A1611-10ATSMRO
453A1611-11ATSMRO
453A1611-12ATSMRO

OEM PART NUMBER

453A1611-6
453A1611-9
453A1611-10
453A1611-11
453A1611-12

TECHNICAL SPECIFICATIONS

- FAA PMA PQ5315NM, Supplement 95
- Equivalent in fit, form and function to OEM part

AIRCRAFT APPLICATION

453A1611-6ATSMRO:

Boeing 737-700/800/900/900ER

453A1611-9ATSMRO:

Boeing 737-600/700/700C/800/900/900ER/
8/9/8200

453A1611-10ATSMRO:

Boeing 737-700/700C

453A1611-11ATSMRO:

Boeing 737-700/700C

453A1611-12ATSMRO:

Boeing 737-700/700C

53: FUSELAGE

CAPSTRIP

ATA Chapter: 53-30, 25-52



PRODUCT DESCRIPTION

The Capstrips are located in the Fwd Cargo Compartment and fasten to floor panels and sidewall liners. They function to close out gaps, assisting in fire containment and preventing debris accumulation below the floor panels

ATS PART NUMBER

453A1611-14ATSMRO
453A1611-16ATSMRO
453A1611-17ATSMRO
453A1611-30ATSMRO
453A1611-31ATSMRO

OEM PART NUMBER

453A1611-14
453A1611-16
453A1611-17
453A1611-30
453A1611-31

TECHNICAL SPECIFICATIONS

- FAA PMA PQ5315NM, Supplement 99
- Equivalent in fit, form and function to OEM part

AIRCRAFT APPLICATION

453A1611-14ATSMRO:
Boeing 737-800/900/900ER/8/9

453A1611-16ATSMRO:
Boeing 737-800/8

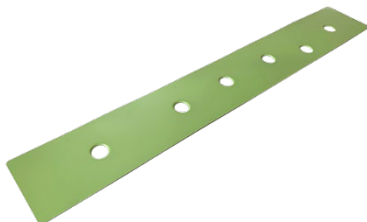
453A1611-17ATSMRO:
Boeing 737-800/8

453A1611-30ATSMRO:
Boeing 737-800/900/900ER/8/9

453A1611-31ATSMRO:
Boeing 737-800/900/900ER/8/9

WEB - FWD CARGO DOOR SILL

ATA Chapter: 53-30



PRODUCT DESCRIPTION

Component of Section 43 Door Surround Structure

ATS PART NUMBER

654A0003-58ATSMRO

OEM PART NUMBER

654A0003-58

TECHNICAL SPECIFICATIONS

- FAA PMA PQ5315NM, Supplement 55
- Equivalent in fit, form and function to OEM part
- Current OEM ICA information is applicable to parts

AIRCRAFT APPLICATION

Boeing 737-600/700/700C/800/900/900ER/8/9

53: FUSELAGE

SEAT TRACK – SECTIONS 43

ATA Chapter: 53-30



PRODUCT DESCRIPTION

Provides a means of attachment for passenger seats

ATS PART NUMBER

654A0004-77ATSMRO
143A5310-54ATSMRO

OEM PART NUMBER

654A0004-77
143A5310-54

TECHNICAL SPECIFICATIONS

- FAA PMA PQ5315NM, Supplement 55
- Equivalent in fit, form and function to OEM part
- Current OEM ICA information is applicable to parts

AIRCRAFT APPLICATION

Boeing 737-700

SEAT TRACK – SECTIONS 43

ATA Chapter: 53-30



PRODUCT DESCRIPTION

Provides a means of attachment for passenger seats

ATS PART NUMBER

654A0004-776ATSMRO
143A5310-52ATSMRO
143A5310-109ATSMRO

OEM PART NUMBER

654A0004-776, 143A5310-51
143A5310-52
143A5310-109

TECHNICAL SPECIFICATIONS

- FAA PMA PQ5315NM, Supplement 55
- Equivalent in fit, form and function to OEM part
- Current OEM ICA information is applicable to parts

AIRCRAFT APPLICATION

Boeing 737-700/800/900/900ER/8/9

53: FUSELAGE

RAIL ASSEMBLIES

ATA Chapter: 53-35



PRODUCT DESCRIPTION

The Rail Assemblies are located in the Forward Cargo Bay and provide support for the STA 500D Bulkhead. In addition, the Rails act as a fire barrier and close out the cargo bay from the wingbox

ATS PART NUMBER

143A9485U30ATSMRO
143A9485U34ATSMRO
143A9485U35ATSMRO

OEM PART NUMBER

143A9485U30
143A9485U34
143A9485U35

TECHNICAL SPECIFICATIONS

- FAA PMA PQ5315NM, Supplement 86
- Equivalent in fit, form and function to OEM part

AIRCRAFT APPLICATION

143A9485U30ATSMRO:

Boeing 737-600/700/700C

143A9485U34ATSMRO &

143A9485U35ATSMRO:

Boeing 737-600/700/700C/800/900/900ER/8/9



SEAT TRACK – SECTIONS 44

ATA Chapter: 53-40



PRODUCT DESCRIPTION

Provides a means of attachment for passenger seats

ATS PART NUMBER

144A5350-1ATSMRO
144A5350-3ATSMRO

OEM PART NUMBER

144A5350-1
144A5350-3

TECHNICAL SPECIFICATIONS

- FAA PMA PQ5315NM, Supplement 47
- Equivalent in fit, form and function to OEM part
- Current OEM ICA information is applicable to parts

AIRCRAFT APPLICATION

144A5350-1ATSMRO:

Boeing 737-600/700/700C/800/900/900ER/8/9

144A5350-3ATSMRO:

Boeing 737-600/700



Trusted Partners
Supporting Flight

53: FUSELAGE

ISOLATOR - SIDEWALL

ATA Chapter: 53-40



PRODUCT DESCRIPTION

Isolators function as an attachment point for the sidewall panels.

ATS PART NUMBER

144A9451U3ATSMRO
144A9451U4ATSMRO
144A9451U5ATSMRO

OEM PART NUMBER

144A9451-3, 144A9451Y3, 144A9451U3
144A9451-4, 144A9451Y4, 144A9451U4
144A9451-5, 144A9451Y5, 144A9451U5

TECHNICAL SPECIFICATIONS

- FAA PMA PQ5315NM, Supplement 51
- Equivalent in fit, form and function to OEM part
- Current OEM ICA information is applicable to parts

AIRCRAFT APPLICATION

Boeing 737-600/700/700C/800/900/900ER/8/9

FRAME – ECS SUPPORT

ATA Chapter: 53-40



PRODUCT DESCRIPTION

ECS Support Frame supports the RAM Air Exhaust Duct Panel just aft of the main LH and RH ECS bay doors

ATS PART NUMBER

149A7214-19ATSMRO

OEM PART NUMBER

149A7214-19

TECHNICAL SPECIFICATIONS

- FAA PMA PQ5315NM, Supplement 58
- Equivalent in fit, form and function to OEM part
- 149A7214-20ATSMRO opposite to 149A7214-19ATSMRO

AIRCRAFT APPLICATION

Boeing 737-700/700C/800/900ER

53: FUSELAGE

FRAME – ECS SUPPORT

ATA Chapter: 53-40



PRODUCT DESCRIPTION

ECS Support Frame supports the RAM Air Exhaust Duct Panel just aft of the main LH and RH ECS bay doors

ATS PART NUMBER

149A7214-20ATSMRO

OEM PART NUMBER

149A7214-20

TECHNICAL SPECIFICATIONS

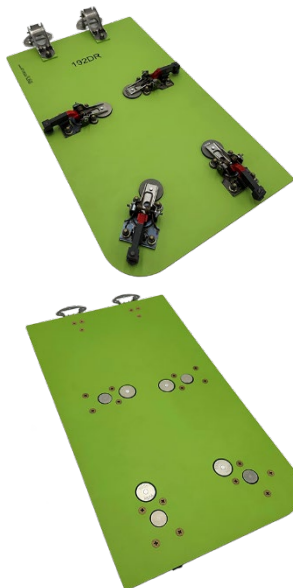
- FAA PMA PQ5315NM, Supplement 58
- Equivalent in fit, form and function to OEM part
- 149A7214-20ATSMRO opposite to 149A7214-19ATSMRO

AIRCRAFT APPLICATION

Boeing 737-700/700C/800/900ER

DOOR ASSEMBLY – HIGH PRESSURE AIR CONNECT

ATA Chapter: 53-40, 52-48



PRODUCT DESCRIPTION

Located at STA 540, RBL 14, the Door Assy is a component of the lower wing-to-body fairing skin panel. During maintenance it gives access to connect an external source of compressed air to the Pneumatic Manifold

ATS PART NUMBER

149A7241-9ATSMRO

OEM PART NUMBER

149A7241-9

TECHNICAL SPECIFICATIONS

- FAA PMA PQ5315NM, Supplement 96
- Equivalent in fit, form and function to OEM part

AIRCRAFT APPLICATION

Boeing 737-700/700C/800/900ER/8/9/8200

53: FUSELAGE

TIE DOWN ASSEMBLY – LH FWD ENTRY DOOR

ATA Chapter: 53-42, 25-66



141A5220-2ATSMRO, STA 312



141A5220-4ATSMRO, STA 344

PRODUCT DESCRIPTION

Attached to the floor structure located at the LH Fwd Entry Door to secure the Escape Slide during emergency evacuation

ATS PART NUMBER

141A5220-2ATSMRO
141A5220-4ATSMRO

OEM PART NUMBER

141A5220-2
141A5220-4

TECHNICAL SPECIFICATIONS

- FAA PMA PQ5315NM, Supplement 53
- Equivalent in fit, form and function to OEM part
- Current OEM ICA information is applicable to parts

AIRCRAFT APPLICATION

141A5220-2ATSMRO:

Boeing 737-600/700/700C/800/900/900ER/8/9

141A5220-4ATSMRO:

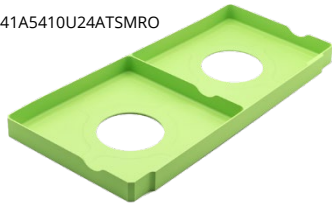
Boeing 737-600/700/800/900/900ER/8/9

53: FUSELAGE

INTERCOSTAL – FLOOR STABILIZER

ATA Chapter: 53-42

141A5410U24ATSMRO



PRODUCT DESCRIPTION

Support the floor panels

ATS PART NUMBER

141A5410U24ATSMRO
141A5410U25ATSMRO
141A5410U146ATSMRO
141A5410U148ATSMRO
141A5410U150ATSMRO

OEM PART NUMBER

141A5410U24
141A5410U25
141A5410U146
141A5410U148
141A5410U150

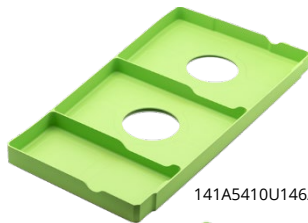
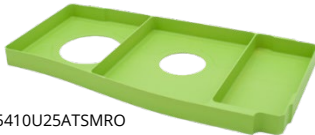
TECHNICAL SPECIFICATIONS

- FAA PMA PQ5315NM, Supplement 43
- Equivalent in fit, form and function to OEM parts
- Current OEM ICA information is applicable to parts

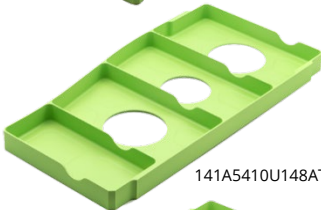
AIRCRAFT APPLICATION

Boeing 737-600/700/800/900/900ER/8/9

141A5410U25ATSMRO



141A5410U146ATSMRO



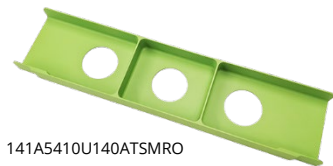
141A5410U148ATSMRO



141A5410U150ATSMRO

INTERCOSTAL – FLOOR STABILIZER

ATA Chapter: 53-42



141A5410U140ATSMRO

PRODUCT DESCRIPTION

Support the floor panels

ATS PART NUMBER

141A5410U140ATSMRO
141A5410U149ATSMRO

OEM PART NUMBER

141A5410-12, 141A5410-140, 141A5410Y140,
141A5410U140
141A5410-17, 141A5410-149, 141A5410Y149,
141A5410U149

TECHNICAL SPECIFICATIONS

- FAA PMA PQ5315NM, Supplement 52
- Equivalent in fit, form and function to OEM parts
- Current OEM ICA information is applicable to parts

AIRCRAFT APPLICATION

141A5410U140ATSMRO:

Boeing 737-600/700/700C/800/900/900ER/8/9

141A5410U149ATSMRO:

Boeing 737-600/700/800/900/900ER/8/9



141A5410U149ATSMRO



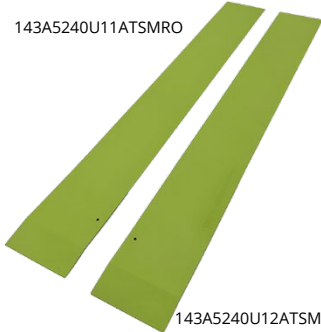
Trusted Partners
Supporting Flight

53: FUSELAGE

PLATE AND PANEL

ATA Chapter: 53-42

143A5240U11ATSMRO



143A5240U12ATSMRO

143A5240U33ATSMRO



143A5240U34ATSMRO

PRODUCT DESCRIPTION

The **Plate** and **Panel** are located at STA 537.45 and are a component of the Panel Break Assy, which supports floor panels in the passenger cabin

ATS PART NUMBER

Plate

143A5240U11ATSMRO
143A5240U12ATSMRO

Panel

143A5240U33ATSMRO
143A5240U34ATSMRO

OEM PART NUMBER

Plate

143A5240U11
143A5240U12

Panel

143A5240U33
143A5240U34

TECHNICAL SPECIFICATIONS

- FAA PMA PQ5315NM, Supplement 116
- Equivalent in fit, form and function to OEM part

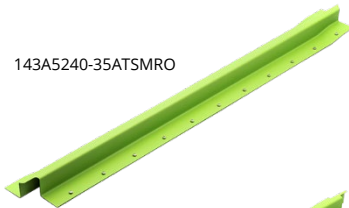
AIRCRAFT APPLICATION

Boeing 737-600/700/800/900/900ER/8/9

FLOOR PANEL BREAK ASSEMBLY

ATA Chapter: 53-42

143A5240-35ATSMRO



143A5240-36ATSMRO

PRODUCT DESCRIPTION

Provides support for floor panels located in the passenger cabin. PMA offering addresses operator-reported service difficulties for cracked OEM parts

ATS PART NUMBER

143A5240-35ATSMRO
143A5240-36ATSMRO

OEM PART NUMBER

143A5240-35
143A5240-36

TECHNICAL SPECIFICATIONS

- FAA PMA PQ5315NM, Supplement 38
- Equivalent in fit, form and function to OEM assembly
- Provided un-drilled to facilitate back-drilling
- Formed Aluminum Sheet
- Chemical conversion coating and corrosion-inhibiting primer applied
- 143A5240-35ATSMRO installs left
- 143A5240-36ATSMRO installs right

AIRCRAFT APPLICATION

Boeing 737-600/700/800/900/900ER/8/9

53: FUSELAGE

FITTING – WATER TANK

ATA Chapter: 53-42, 38-11



PRODUCT DESCRIPTION

The Water Tank Fitting is a component of the Water/Waste Tank Enclosure in the Aft Cargo Compartment. It provides attach points for longitudinal angles, which in turn support the Water/Waste Tank Enclosure/Lining.

ATS PART NUMBER

143A8113U6ATSMRO

OEM PART NUMBER

143A8113U6

TECHNICAL SPECIFICATIONS

- FAA PMA PQ5315NM, Supplement 108
- Equivalent in fit, form and function to OEM part

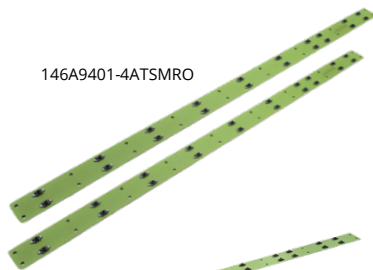
AIRCRAFT APPLICATION

Boeing 737-700/800/8

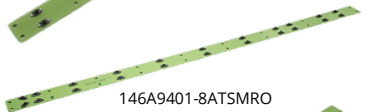
TEE ASSEMBLY

ATA Chapter: 53-42

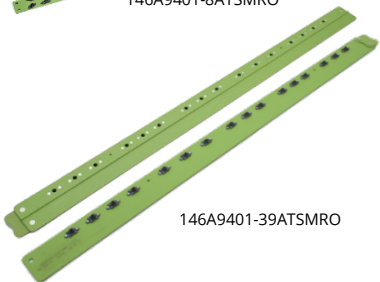
146A9401-4ATSMRO



146A9401-8ATSMRO



146A9401-39ATSMRO



PRODUCT DESCRIPTION

Provides a connection point and support for the aft cargo floor

ATS PART NUMBER

146A9401-4ATSMRO

146A9401-8ATSMRO

146A9401U39ATSMRO

OEM PART NUMBER

146A9401-4

146A9401-8

146A9401-39, 146A9401Y39, 146A9401U39

TECHNICAL SPECIFICATIONS

- FAA PMA PQ5315NM, Supplement 45
- Equivalent in fit, form and function to OEM assembly
- Current OEM ICA information is applicable to parts

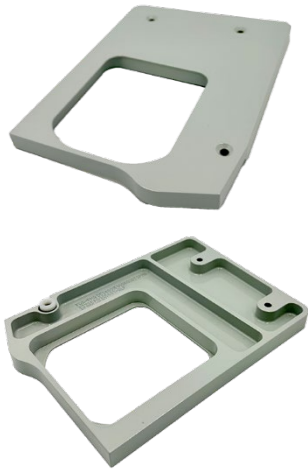
AIRCRAFT APPLICATION

Boeing 737-600/700/700C/800/900/900ER/8/9

53: FUSELAGE

PLATE ASSY - AFT PAX DOOR

ATA Chapter: 53-46



PRODUCT DESCRIPTION

The Plate Assy is located at the AFT Passenger Door and functions as a cover plate for the Girt Bar Fitting, closing out gaps between the Girt Bar Fitting, door frame, and adjacent floor panels

ATS PART NUMBER

D5348015900600ATSPMA

OEM PART NUMBER

D5348015900600

TECHNICAL SPECIFICATIONS

- FAA PMA PQ5315NM, Supplement 113
- Equivalent in fit, form and function to OEM part

AIRCRAFT APPLICATION

Airbus A319-100/A320-200/A321-200

DOOR ASSEMBLY - FWD FAIRING ACCESS

ATA Chapter: 53-51, 52-49, 53-30



PRODUCT DESCRIPTION

The Door Assembly is located between STA 520 and STA 540 on the belly of the aircraft, and provides access to the ground conditioned air connector

ATS PART NUMBER

149A7148-23ATSMRO

OEM PART NUMBER

149A7148-23

TECHNICAL SPECIFICATIONS

- FAA PMA PQ5315NM, Supplement 85.
- Equivalent in fit, form, and function to OEM assembly

AIRCRAFT APPLICATION

Boeing 737-700/700C/800/900ER/8/9

BRACKETS - DOOR ACTUATOR

ATA Chapter: 53-51



PRODUCT DESCRIPTION

Located on the wing-to-body fairing, the Bracket functions as a door actuator for the flap track cutout door. The flap track carriage engages the Bracket when the flap retracts, and the seal plate door opens

ATS PART NUMBER

149A7322U19ATSMRO

149A7322U20ATSMRO

OEM PART NUMBER

149A7322U19

149A7322U20

TECHNICAL SPECIFICATIONS

- FAA PMA PQ5315NM, Supplement 97
- Equivalent in fit, form and function to OEM part

AIRCRAFT APPLICATION

Boeing 737-700/800/900ER/8/9/8200

53: FUSELAGE

ZEE ASSY – CARGO FLOOR, SECTION 46

ATA Chapter: 53-60



PRODUCT DESCRIPTION

The PMA article is located at RBL 21.0, spanning the STA 867 to STA 887 frames in Section 46 of the Aft Cargo Compartment. It provides support and a means of retention for the RH sidewall liners and floor panels

ATS PART NUMBER

146A7502-56ATSMRO

OEM PART NUMBER

146A7502-56

TECHNICAL SPECIFICATIONS

- FAA PMA PQ5315NM, Supplement 105
- Equivalent in fit, form and function to OEM part

AIRCRAFT APPLICATION

Boeing 737-600/700/700C/800/900/900ER/
8/9/8200

AFT CARGO PIT SHIELD

ATA Chapter: 53-60



PRODUCT DESCRIPTION

Provides attach points for aft cargo bay sidewall and floor panels

ATS PART NUMBER

146A8127U1ATSMRO

OEM PART NUMBER

146A8127U1

TECHNICAL SPECIFICATIONS

- FAA PMA PQ5315NM, Supplement 21
- Equivalent in fit, form and function to OEM assembly
- Two coats of primer for improved corrosion resistance
- 146A8127U1ATSMRO installs forward of the aft cargo bay door

AIRCRAFT APPLICATION

Boeing 737-600/700/700C/800/900

AFT CARGO PIT SHIELD

ATA Chapter: 53-60



PRODUCT DESCRIPTION

Provides attach points for sidewall and floor panels in the aft cargo compartment

ATS PART NUMBER

146A8127U12ATSMRO

OEM PART NUMBER

146A8127U12

TECHNICAL SPECIFICATIONS

- FAA PMA PQ5315NM, Supplement 21
- Equivalent in fit, form and function to OEM assembly
- Two coats of primer for improved corrosion resistance
- 146A8127U12ATSMRO installs forward of the aft cargo bay door

AIRCRAFT APPLICATION

Boeing 737-600/700/800/900/900ER

53: FUSELAGE

AFT CARGO PIT SHIELD

ATA Chapter: 53-60



PRODUCT DESCRIPTION

Provides attach points for sidewall and floor panels in the aft cargo compartment

ATS PART NUMBER

146A8127Y10ATSMRO

OEM PART NUMBER

146A8127Y10

TECHNICAL SPECIFICATIONS

- FAA PMA PQ5315NM, Supplement 21
- Equivalent in fit, form and function to OEM assembly
- Two coats of primer for improved corrosion resistance
- 146A8127Y10ATSMRO installs aft of the aft cargo bay door

AIRCRAFT APPLICATION

Boeing 737-600/700/800/900/900ER

SCUFF PLATE - FORWARD CARGO DOOR

ATA Chapter: 53-60



PRODUCT DESCRIPTION

Components of the cargo doorway lower main sill. Primarily designed to resist impact damage from cargo and protect underlying structure from environmental effects

ATS PART NUMBER

146A8342-7ATSMRO

OEM PART NUMBER

146A8342-7

TECHNICAL SPECIFICATIONS

- FAA PMA PQ5315NM, Supplement 75.
- Equivalent in fit, form and function to OEM.
- Material: Titanium

AIRCRAFT APPLICATION

Boeing 737-600/700/700C/800/900/900ER/8/9

53: FUSELAGE

CAPSTRIP

ATA Chapter: 53-60, 25-52

453A2611-4ATSMRO 453A2611-8ATSMRO



PRODUCT DESCRIPTION

The Capstrips are located in the Aft Cargo Compartment and fasten to floor panels, bulkhead liners, and sidewall liners. They function to close out gaps, assisting in fire containment and preventing debris accumulation below the floor panels

ATS PART NUMBER

453A2611-4ATSMRO
453A2611-8ATSMRO
453A2611-9ATSMRO
453A2611-24ATSMRO

OEM PART NUMBER

453A2611-4
453A2611-8
453A2611-9
453A2611-24

TECHNICAL SPECIFICATIONS

- FAA PMA PQ5315NM, Supplement 100
- Equivalent in fit, form and function to OEM part

AIRCRAFT APPLICATION

453A2611-4ATSMRO:

Boeing 737-600/700/700C/800/900/900ER/
8/9/8200

453A2611-8ATSMRO:

Boeing 737-700/700C

453A2611-9ATSMRO:

Boeing 737-700/700C

453A2611-24ATSMRO:

Boeing 737-600/700/700C/800/900/900ER

453A2611-9ATSMRO



453A2611-24ATSMRO

53: FUSELAGE

CAPSTRIP - ASSY

ATA Chapter: 25-52, 53-60

PRODUCT DESCRIPTION

The Capstrips are located in the Aft Cargo Compartment and fasten to floor panels, bulkhead liners, and sidewall liners. They function to close out gaps, assisting in fire containment and preventing debris accumulation below the floor panels

TECHNICAL SPECIFICATIONS

- FAA PMA PQ5315NM, Supplement 107
- Equivalent in fit, form and function to OEM part

AIRCRAFT APPLICATION

453A2611-27ATSMRO &

453A2611Y3ATSMRO:

Boeing 737-600/700/700C/800/900/
900ER/8/9

453A2611-13ATSMRO:

Boeing 737-700/700C/800/900/900ER/8/9

ATS PART NUMBER

453A2611-27ATSMRO
453A2611 Y3ATSMRO
453A2611-13ATSMRO

OEM PART NUMBER

453A2611-27
453A2611 Y3
453A2611-13

453A2611-27ATSMRO

453A2611Y3ATSMRO

453A2611-13ATSMRO

53: FUSELAGE

CHORD

ATA Chapter: 53-70



PRODUCT DESCRIPTION

The Chord is a component of the Section 47 floor structure, spanning the STA 927 to STA 947.5 floor beams at LBL 0.54. It functions to both stabilize the floor structure and support the cabin floor panel.

ATS PART NUMBER

147A5430U1ATSMRO

OEM PART NUMBER

147A5430U1

TECHNICAL SPECIFICATIONS

- FAA PMA PQ5315NM, Supplement 94
- Equivalent in fit, form and function to OEM part

AIRCRAFT APPLICATION

Boeing 737-600/700/800/900ER/8/9/8200

INTERCOSTAL ASSY – SECTION 47

ATA Chapter: 53-70



PRODUCT DESCRIPTION

The PMA article is located at RBL 3.0, spanning the STA 927 to STA 947 frames in Section 47 of the Aft Cargo Compartment. It provides stiffness to the adjacent structure and provides attachment locations/support for the upper rail, which in turn supports the cargo compartment floor panels.

ATS PART NUMBER

147A7500U6ATSMRO

OEM PART NUMBER

147A7500U6

TECHNICAL SPECIFICATIONS

- FAA PMA PQ5315NM, Supplement 105
- Equivalent in fit, form and function to OEM part

AIRCRAFT APPLICATION

Boeing 737- 600/700/700C/800/900/900ER/8/9/8200

CARGO TRACK ASSEMBLY – SECTION 47, DECK SUPPORT

ATA Chapter: 53-70



PRODUCT DESCRIPTION

Supports cargo floor panels, provides floor support for payloads, and incorporates tie down attach points to prevent cargo from shifting.

ATS PART NUMBER

147A7501-13ATSMRO

147A7501-14ATSMRO

OEM PART NUMBER

147A7501-13

147A7501-14

TECHNICAL SPECIFICATIONS

- FAA PMA PQ5315NM, Supplement 79
- Equivalent in fit, form and function to OEM assembly

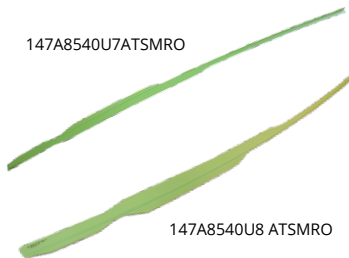
AIRCRAFT APPLICATION

Boeing 737-600/700/700C/800/900/900ER/8/9

53: FUSELAGE

INNER CHORD LH/RH OF AFT DOORS

ATA Chapter: 53-70



PRODUCT DESCRIPTION

Formed stiffeners installed at threshold of Section 47 aft doors and are part of the door surround structure

ATS PART NUMBER

147A8540U7ATSMRO
147A8540U8ATSMRO

OEM PART NUMBER

147A8540U7
147A8540U8

TECHNICAL SPECIFICATIONS

- FAA PMA PQ5315NM, Supplement 23
- Equivalent in fit, form and function to OEM assembly
- Current OEM ICA information is applicable to parts
- Provided as undrilled parts for match-drilling on the aircraft

AIRCRAFT APPLICATION

Boeing 737-600/700/800/900/8

BRACKET ASSEMBLY – AFT CARGO COMPARTMENT

ATA Chapter: 53-70, 25-52



PRODUCT DESCRIPTION

Attachment point for Aft Cargo Compartment Bulkhead removable panel

ATS PART NUMBER

149A8118U29ATSMRO

OEM PART NUMBER

149A8118U29

TECHNICAL SPECIFICATIONS

- FAA PMA PQ5315NM, Supplement 52
- Equivalent in fit, form and function to OEM part
- Current OEM ICA information is applicable to parts

AIRCRAFT APPLICATION

Boeing 737-600/700/700C/800/900/900ER/8/9

CLOSURE ANGLE – SECTION 48

ATA Chapter: 53-80



PRODUCT DESCRIPTION

Closure Angles function as closeouts between the vertical stabilizer and fuselage skin

ATS PART NUMBER

148A8310U3ATSMRO
148A8310U4ATSMRO

OEM PART NUMBER

148A8310-3
148A8310-4

TECHNICAL SPECIFICATIONS

- FAA PMA PQ5315NM, Supplement 55
- Equivalent in fit, form and function to OEM part
- Current OEM ICA information is applicable to parts

AIRCRAFT APPLICATION

Boeing 737-600/700/700C/800/900

53: FUSELAGE

CLOSURE ANGLE – SECTION 48

ATA Chapter: 53-80



PRODUCT DESCRIPTION

Provides a closeout interface between the fuselage crown skin and vertical stabilizer

ATS PART NUMBER

148A8310U7ATSMRO
148A8310U8ATSMRO

OEM PART NUMBER

148A8310-7, 148A8310U7
148A8310-8, 148A8310U8

TECHNICAL SPECIFICATIONS

- FAA PMA PQ5315NM, Supplement 61
- Equivalent in fit, form and function to OEM part
- 148A8310U8ATSMRO opposite to 148A8310U7ATSMRO

AIRCRAFT APPLICATION

Boeing 737-700/800

54: NACELLES/PYLONS

LATERAL RESTRAINT

ATA Chapter: 54-52



313A2312-3ATSMRO



313A2312-4ATSMRO

PRODUCT DESCRIPTION

Located on both the left and right engine's aft fairing. Prevents in-flight, lateral movement of the engine strut's aft fairing structure

ATS PART NUMBER

313A2312-3ATSMRO
313A2312-4ATSMRO

OEM PART NUMBER

313A2312-3
313A2312-4

TECHNICAL SPECIFICATIONS

- FAA PMA PQ5315NM, Supplement 35
- Equivalent in fit, form and function to OEM part
- 313A2312-4ATSMRO opposite to 313A2312-3ATSMRO

AIRCRAFT APPLICATION

Boeing 737-600/700/700C/800/900/900ER

PRESSURE RELIEF DOOR LATCH

ATA Chapter: 54-52



PRODUCT DESCRIPTION

The Pressure Relief Door Latch is a component of the Forward Fairing Pressure Relief Door. It functions to keep the door closed and secure during flight and to open the door during maintenance. It also allows the door to open if a specified internal pressure is reached allowing a pressure relief passage in the event the Nacelle or Pylon experience a rapid increase in internal pressure

ATS PART NUMBER

TL22071-104ATSMRO

OEM PART NUMBER

TL22071-104

TECHNICAL SPECIFICATIONS

- FAA PMA PQ5315NM, Supplement 87
- Equivalent in fit, form and function to OEM part

AIRCRAFT APPLICATION

Boeing 737-600/700/700C/800/900/900ER

54: NACELLES/PYLONS

BRACKET - FIREWALL

ATA Chapter: 54-54

311A2683U15ATSMRO 311A2683U16ATSMRO



PRODUCT DESCRIPTION

The Firewall Bracket is installed on the LH and RH engine strut/pylon and is a component of the fire seal depressor system. It assists in aligning and locating the fire barrier assembly components during the closing of the T/R Aft Cowl to maintain the firewall zone seal

TECHNICAL SPECIFICATIONS

- FAA PMA PQ5315NM, Supplement 119
- Equivalent in fit, form and function to OEM part

AIRCRAFT APPLICATION

Boeing 737-700/800

ATS PART NUMBER

311A2683U15ATSMRO
311A2683U16ATSMRO

OEM PART NUMBER

311A2683U15
311A2683U16

© 2025 Aviation Technical Services – 4/2025



Trusted Partners
Supporting Flight

For more information contact:

sales@rangeraav.com

+1 972 245 6699

ATSmro.com

55: STABILIZERS

SPRING – VERTICAL FIN

ATA Chapter: 55-30



PRODUCT DESCRIPTION

The Spring is a component of the Expansion Joint Assy in the Vertical Fin/Stabilizer. It functions to retain the Front Spar Termination Fitting Assy

ATS PART NUMBER

176A3101U26ATSMRO

OEM PART NUMBER

176A3101U26

TECHNICAL SPECIFICATIONS

- FAA PMA PQ5315NM, Supplement 106
- Equivalent in fit, form and function to OEM part

AIRCRAFT APPLICATION

Boeing 737-700 Series/800 Series/8

© 2024 Aviation Technical Services – 8/2024



Trusted Partners
Supporting Flight

For more information contact:

sales@rangeraav.com

+1 972 245 6699

ATSmro.com

57: WINGS

STIFFENER

ATA Chapter: 57-10



PRODUCT DESCRIPTION

Acts as additional support to the LBL 24.92 vertical stiffener of the Wing Center Section Rear Spar Installation

ATS PART NUMBER

111A1308U15ATSMRO

OEM PART NUMBER

111A1308-15

TECHNICAL SPECIFICATIONS

- FAA PMA PQ5315NM, Supplement 21
- Equivalent in fit, form and function to OEM assembly
- Undrilled part to facilitate back drilling

AIRCRAFT APPLICATION

Boeing 737-600/700/700IGW/800/900/900ER

STIFFENER – REAR SPAR, WING CENTER SECTION

ATA Chapter: 57-10



PRODUCT DESCRIPTION

An aluminum fitting that is installed common to the Wing Center Section Rear Spar. Primarily acts as additional support to the RBL 24.92 vertical stiffener of the Wing Center Section Rear Spar Installation.

ATS PART NUMBER

111A1308U16ATSMRO

OEM PART NUMBER

111A1308U16

TECHNICAL SPECIFICATIONS

- FAA PMA PQ5315NM, Supplement 64.
- Equivalent in fit, form and function to OEM.
- Material: Aluminum Alloy

AIRCRAFT APPLICATION

Boeing 737-600/700/700C/800/900/900ER

CLOSEOUT SKIN ASSEMBLY

ATA Chapter: 57-41



116A4411U1ATSMRO



116A4411U2ATSMRO

PRODUCT DESCRIPTION

The purpose of the Closeout Skin Assembly is to “closeout” or extend the profile of the Leading Edge under the engine pylon so that no gap between the wing and the pylon fairing exists

ATS PART NUMBER

116A4411U1ATSMRO

116A4411U2ATSMRO

OEM PART NUMBER

116A4411U1

116A4411U2

TECHNICAL SPECIFICATIONS

- FAA PMA PQ5315NM, Supplement 23
- Equivalent in fit, form and function to OEM part
- Provided as undrilled part for match drilling during installation
- 116A4411U1ATSMRO opposite to 116A4411U2ATSMRO

AIRCRAFT APPLICATION

Boeing 737-600/700/700C/800/900/900ER

57: WINGS

STRINGER ASSY

ATA Chapter: 57-41



PRODUCT DESCRIPTION

The PMA articles are spanwise structural members of the Wing Fixed L/E that, in combination with the skin, react axial loads between the ribs. The L/E skin is riveted to the stringer and the stringer is fastened to the ribs. A bracket on the PMA articles provides a means of retaining Leading Edge Flap actuator hydraulic tubes

ATS PART NUMBER

116A4530U1ATSMRO
654A0004-592ATSMRO

OEM PART NUMBER

116A4530U1
654A0004-592

TECHNICAL SPECIFICATIONS

- FAA PMA PQ5315NM, Supplement 23
- Equivalent in fit, form and function to OEM part
- Provided as undrilled part for match drilling during installation
- 116A4411U1ATSMRO opposite to 116A4411U2ATSMRO

AIRCRAFT APPLICATION

Boeing 737-600/700/700C/800/900/900ER

SUPPORT BRACKET ASSEMBLY – LWR INBD FIXED TE

ATA Chapter: 57-50



PRODUCT DESCRIPTION

Support Bracket Assembly acts as an attachment for the tie rod that connects the lower fixed trailing edge access panel to the upper fixed trailing edge panel

ATS PART NUMBER

115A2750Y1ATSMRO

OEM PART NUMBER

115A2750-1, 115A2750Y1

TECHNICAL SPECIFICATIONS

- FAA PMA PQ5315NM, Supplement 60
- Equivalent in fit, form and function to OEM assembly

AIRCRAFT APPLICATION

Boeing 737-600/700/700C/800/900/900ER/8/9

57: WINGS

BEAM ASSEMBLY

ATA Chapter: 57-50, 27-51



PRODUCT DESCRIPTION

The Beam Assemblies are components of the Inboard Trailing Edge fixed lower panel assembly. The Beam Assy provides attachment points for adjustment rods, which can be adjusted to maintain a smooth aerodynamic surface where the fixed lower T/E panel transitions to the INBD flap

ATS PART NUMBER

115A2759Y5ATSMRO
115A2759Y6ATSMRO
115A2759Y13ATSMRO
115A2759Y14ATSMRO

OEM PART NUMBER

115A2759Y5
115A2759Y6
115A2759Y13
115A2759Y14

TECHNICAL SPECIFICATIONS

- FAA PMA PQ5315NM, Supplement 92
- Equivalent in fit, form and function to OEM part

AIRCRAFT APPLICATION

115A2759Y5ATSMRO & 115A2759Y6ATSMRO:
Boeing 737-600/700/700C/800/900

115A2759Y13ATSMRO & 115A2759Y14ATSMRO:
Boeing 737-600/700/700C/800/900ER/8/9/8200

WIGGLE PLATE ASSEMBLY

ATA Chapter: 57-50



PRODUCT DESCRIPTION

Provides attach points for an Inboard Fixed Trailing Edge Lower Wing Access Panel and allows the wing to flex without tearing out the fasteners on the access panel or the rear spar

ATS PART NUMBER

115A2781-3ATSMRO
115A2781-4ATSMRO

OEM PART NUMBER

115A2781-3
115A2781-4

TECHNICAL SPECIFICATIONS

- FAA PMA PQ5315NM, Supplement 37.
- Equivalent in fit, form and function to OEM assembly.
- 115A2781-3ATSMRO opposite part to 115A2781-4ATSMRO

AIRCRAFT APPLICATION

Boeing 737-600/700/800/900ER

57: WINGS

WIGGLE PLATE ASSEMBLY

ATA Chapter: 57-50



115A2781-13ATSMRO



115A2781-14ATSMRO

PRODUCT DESCRIPTION

Provides attach points for an Inboard Fixed Trailing Edge Lower Wing Access Panel and allows the wing to flex without tearing out the fasteners on the access panel or the rear spar

ATS PART NUMBER

115A2781-13ATSMRO
115A2781-14ATSMRO

OEM PART NUMBER

115A2781-13
115A2781-14

TECHNICAL SPECIFICATIONS

- FAA PMA PQ5315NM, Supplement 33.
- Equivalent in fit, form and function to OEM assembly.
- 115A2781-13ATSMRO opposite part to 115A2781-14ATSMRO

AIRCRAFT APPLICATION

Boeing 737-600/700/800/900ER

WIGGLE PLATE ASSEMBLY – INBOARD FIXED T/E

ATA Chapter: 57-50

115A2781-15ATSMRO



115A2781-16ATSMRO

115A2781-202ATSMRO



115A2781-201ATSMRO

PRODUCT DESCRIPTION

The Wiggle Plate Assy provides attach points for an Inboard Fixed Trailing Edge Lower Wing Access Panel and allows the wing to flex without tearing out the fasteners on the access panel or the rear spar

ATS PART NUMBER

115A2781-15ATSMRO
115A2781-16ATSMRO
115A2781-201ATSMRO
115A2781-202ATSMRO

OEM PART NUMBER

115A2781-15
115A2781-16
115A2781-201
115A2781-202

TECHNICAL SPECIFICATIONS

- FAA PMA PQ5315NM, Supplement 117
- Equivalent in fit, form and function to OEM part

AIRCRAFT APPLICATION

Boeing 737-700/800/8

57: WINGS

BULB SEAL – WING INBD FIXED T/E

ATA Chapter: 57-50



PRODUCT DESCRIPTION

The Bulb Seal is a component of the Upper Inboard Fixed T/E on the LH/RH Wing. It provides a smooth aerodynamic surface between access panels, while filling the gap to act as a moisture barrier

ATS PART NUMBER

115A2795-2ATSMRO

OEM PART NUMBER

115A2795-2

TECHNICAL SPECIFICATIONS

- FAA PMA PQ5315NM, Supplement 112
- Equivalent in fit, form and function to OEM part

AIRCRAFT APPLICATION

Boeing 737-700/800/8

BRACKET ASSY – MAIN LANDING GEAR BEAM

ATA Chapter: 57-51



115A2162-21ATSMRO 115A2162-22ATSMRO

PRODUCT DESCRIPTION

The Bracket Assy is installed on the Main Landing Gear Beam on the LH and RH wing. It provides attach points for tie rods that support the Wing Inboard Fixed Trailing Edge structure

ATS PART NUMBER

115A2162-21ATSMRO

115A2162-22ATSMRO

OEM PART NUMBER

115A2162-21

115A2162-22

TECHNICAL SPECIFICATIONS

- FAA PMA PQ5315NM, Supplement 115
- Equivalent in fit, form and function to OEM part

AIRCRAFT APPLICATION

Boeing 737-700/800/8

SERRATED PLATE

ATA Chapter: 57-51



PRODUCT DESCRIPTION

The Serrated Plates are components of the wing T/E and function to stabilize the Rib Assy via its serrations. The serrations allow for vertical adjustment when realignment may be required

ATS PART NUMBER

115A2183Y1ATSMRO

115A2183-3ATSMRO

115A2183-4ATSMRO

OEM PART NUMBER

115A2183Y1

115A2183-3

115A2183-4

TECHNICAL SPECIFICATIONS

- FAA PMA PQ5315NM, Supplement 101
- Equivalent in fit, form and function to OEM part

AIRCRAFT APPLICATION

115A2183Y1ATSMRO:

Boeing 737-600/700/700C/800/900/900ER

115A2183-3ATSMRO & 115A2183-4ATSMRO:

Boeing 737-600/700/700C/800/900ER

57: WINGS

BEAM ASSY – BEAM ASSY, KIT

ATA Chapter: 57-51



PRODUCT DESCRIPTION

The Beam Assy is a part of the wing fixed T/E structure. It acts as a stiffening element while providing support for the fixed T/E lower access panels

ATS PART NUMBER

BEAM ASSY

115A3758-9ATSMRO

BEAM ASSY, KIT

654A0004-622ATSMRO

OEM PART NUMBER

115A3758-9

654A0004-622

115A3758-34

TECHNICAL SPECIFICATIONS

- FAA PMA PQ5315NM, Supplement 103
- Equivalent in fit, form and function to OEM part

AIRCRAFT APPLICATION

Boeing 737-600/700/700C/800/900/900ER/
8/9/8200

RIB – DEFLECTION CONTROL, OUTBOARD T/E FLAP

ATA Chapter: 57-53



PRODUCT DESCRIPTION

The Deflection Control Ribs are installed on the Trailing Edge Outboard Main Flaps. They provide structural support and control deflection angle of the Outboard Main Flaps during extension and retraction

ATS PART NUMBER

113A3241U1ATSMRO

113A3241U2ATSMRO

OEM PART NUMBER

113A3241U1

113A3241U2

TECHNICAL SPECIFICATIONS

- FAA PMA PQ5315NM, Supplement 120
- Equivalent in fit, form and function to OEM part

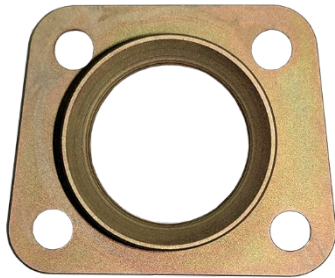
AIRCRAFT APPLICATION

Boeing 737-700/800

57: WINGS

BUSHING - ADJUST LINK

ATA Chapter: 57-53, 27-51



PRODUCT DESCRIPTION

Component of the Flap Track Fairing Module that serves as an aft attach point to hold the #1/#2/#3/#6/#7/#8 Flap Track Fairing in place

ATS PART NUMBER

113A9120-1ATSMRO

OEM PART NUMBER

113A9120-1

TECHNICAL SPECIFICATIONS

- Bushing - Adjust Link (P/N: 113A9120-1ATSMRO) is a detail that feeds into Adjust Link Assembly (P/N: 113A9305-5ATSMRO, Supplement 24)

AIRCRAFT APPLICATION

Boeing 737-600/700/800/900/900ER/8

BUSHING

ATA Chapter: 57-53



PRODUCT DESCRIPTION

The Bushings are components of the Flap Track Fairing Module, which improves aerodynamic efficiency. In combination with the Pivot Bolts that mate inside the Bushings, they function to provide an attachment and pivot point for the aft section of the Fairing Module

ATS PART NUMBER

113A9209-2ATSMRO

113A9309-2ATSMRO

OEM PART NUMBER

113A9209-2

113A9309-2

TECHNICAL SPECIFICATIONS

- FAA PMA PQ5315NM, Supplement 93
- Equivalent in fit, form and function to OEM part

AIRCRAFT APPLICATION

Boeing 700/700C/800/900ER/8/9/8200

ADJUST LINK ASSEMBLY

ATA Chapter: 57-53, 27-51



PRODUCT DESCRIPTION

Component of the Flap Track Fairing Module that serves as an aft attach point to hold the #3 and #6 Flap Track Fairing in place

ATS PART NUMBER

113A9305-5ATSMRO

OEM PART NUMBER

113A9305-5

TECHNICAL SPECIFICATIONS

- FAA PMA PQ5315NM, Supplement 24.
- Equivalent in fit, form and function to OEM assembly.
- 15.3 inches long x 6.8 inches wide x 1.9 inches deep.
- Approximate Weight = 1.65 lbs

AIRCRAFT APPLICATION

Boeing 737-600/700/800/900/900ER/8

57: WINGS

ADJUST LINK

ATA Chapter: 57-53, 27-51



PRODUCT DESCRIPTION

Component of the Flap Track Fairing Module that serves as an aft attach point to hold the #3 and #6 Flap Track Fairing in place

ATS PART NUMBER

113A9305-7ATSMRO

OEM PART NUMBER

113A9305-7

TECHNICAL SPECIFICATIONS

- Adjust Link (P/N: 113A9305-7ATSMRO) is a detail that feeds into Adjust Link Assembly (P/N: 113A9305-5ATSMRO, Supplement 24)

AIRCRAFT APPLICATION

Boeing 737-600/700/800/900/900ER/8

AFT BULKHEAD - FLAP SUPPORT

ATA Chapter: 57-53, 27-51

113A9360-1ATSMRO



PRODUCT DESCRIPTION

The Bulkhead Assy is a component of the inboard T/E flap AFT Fairing. It functions to support a link and rod assembly used to adjust clearance between the top surface of the AFT Fairing and T/E flap

ATS PART NUMBER

113A9360-1ATSMRO

113A9360-2ATSMRO

OEM PART NUMBER

113A9360-1

113A9360-2

TECHNICAL SPECIFICATIONS

- FAA PMA PQ5315NM, Supplement 101
- Equivalent in fit, form and function to OEM part

AIRCRAFT APPLICATION

Boeing 737-600/700/700C/800/900/900ER

113A9360-2ATSMRO



57: WINGS

RETAINER

ATA Chapter: 57-53, 27-51



PRODUCT DESCRIPTION

Component of the Flap Track Fairing Module that serves as an aft attach point to hold the #1/#2/#3/#6/#7/#8 Flap Track Fairing in place

ATS PART NUMBER

69B14136-2ATSMRO

OEM PART NUMBER

69B14136-2

TECHNICAL SPECIFICATIONS

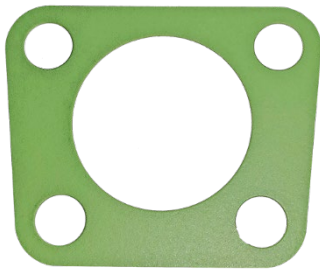
- Retainer (P/N: 69B14136-2ATSMRO) is a detail that feeds into Adjust Link Assembly (P/N: 113A9305-5ATSMRO, Supplement 24)

AIRCRAFT APPLICATION

Boeing 737-600/700/800/900/900ER/8

SHIM - LAMINATED

ATA Chapter: 57-53, 27-51



PRODUCT DESCRIPTION

Component of the Flap Track Fairing Module that serves as an aft attach point to hold the #1/#2/#3/#6/#7/#8 Flap Track Fairing in place

ATS PART NUMBER

69B14136-3ATSMRO

OEM PART NUMBER

69B14136-3

TECHNICAL SPECIFICATIONS

- Shim - Laminated (P/N: 69B14136-3ATSMRO) is a detail that feeds into Adjust Link Assembly (P/N: 113A9305-5ATSMRO, Supplement 24)

AIRCRAFT APPLICATION

Boeing 737-600/700/800/900/900ER/8

RETAINER - KRUEGER SEAL

ATA Chapter: 57-56, 27-81



114A1811-1ATSMRO

114A1811-2ATSMRO

PRODUCT DESCRIPTION

The Retainer secures a Krueger Flap Seal. During Flap extension and retraction, the Krueger Seal protects the Thrust Reverser from abrading the Krueger Flap

ATS PART NUMBER

114A1811-1ATSMRO
114A1811-2ATSMRO

OEM PART NUMBER

114A1811-1
114A1811-2

TECHNICAL SPECIFICATIONS

- FAA PMA PQ5315NM, Supplement 103
- Equivalent in fit, form and function to OEM part

AIRCRAFT APPLICATION

Boeing 737-600/700/700C/800/900/900ER

57: WINGS

WEAR PAD – KRUEGER SEAL

ATA Chapter: 57-56, 27-81



PRODUCT DESCRIPTION

The Wear Pad fastens to the Krueger Seal Retainer. During Flap extension and retraction, the Krueger Seal assembly protects the Thrust Reverser from abrading the Krueger Flap

ATS PART NUMBER

114A1811-3ATSMRO

OEM PART NUMBER

114A1811-3

TECHNICAL SPECIFICATIONS

- FAA PMA PQ5315NM, Supplement 103
- Equivalent in fit, form and function to OEM part

AIRCRAFT APPLICATION

Boeing 737-600/700/700C/800/900/900ER

© 2025 Aviation Technical Services – 4/2025



Trusted Partners
Supporting Flight

For more information contact:

sales@rangeraav.com

+1 972 245 6699

ATSmro.com

71: POWER PLANT

BRACKET ASSY - UPPER LEFT

ATA Chapter: 71-00, 36-11



PRODUCT DESCRIPTION

The Bracket Assy is installed to the Engine Fan Case/Frame, Flange A1. It provides support/stabilization to the Lower Pneumatic Starter Duct

ATS PART NUMBER

332A2930-7ATSMRO

OEM PART NUMBER

332A2930-7

TECHNICAL SPECIFICATIONS

- FAA PMA PQ5315NM, Supplement 107
- Equivalent in fit, form and function to OEM part

AIRCRAFT APPLICATION

Boeing 737-700/800

TEE FRAME – UPPER and LOWER

ATA Chapter: 71-10



PRODUCT DESCRIPTION

Act as a supportive shelf for the engine cowlings to rest against when the cowlings are in the close and latched position

ATS PART NUMBER

314-2162-3ATSMRO (Upper)
314-2162-4ATSMRO (Lower)

OEM PART NUMBER

314-2162-3
314-2162-4

TECHNICAL SPECIFICATIONS

- FAA PMA PQ5315NM, Supplement 25
- Equivalent in fit, form and function to OEM part

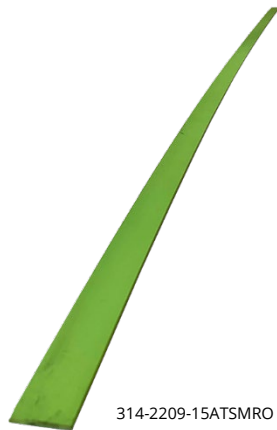
AIRCRAFT APPLICATION

Boeing 737-600/700/700C/800/900/900ER

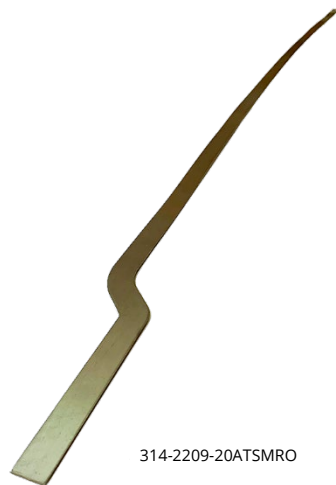
71: POWER PLANT

RUBSTRIP

ATA Chapter: 71-10



314-2209-15ATSMRO



314-2209-20ATSMRO

PRODUCT DESCRIPTION

Rubstrips are thin, flat, metallic sheet strips that line the edges of the Fan Cowl Assemblies' skins to protect them from frictional wear

ATS PART NUMBER

314-2209-13ATSMRO
314-2209-14ATSMRO
314-2209-15ATSMRO
314-2209-16ATSMRO
314-2209-17ATSMRO
314-2209-18ATSMRO
314-2209-19ATSMRO
314-2209-20ATSMRO
314-2209-21ATSMRO
314-2209-22ATSMRO
314-2209-23ATSMRO
314-2209-24ATSMRO

OEM PART NUMBER

314-2209-13
314-2209-14
314-2209-15
314-2209-16
314-2209-17
314-2209-18
314-2209-19
314-2209-20
314-2209-21
314-2209-22
314-2209-23
314-2209-24

TECHNICAL SPECIFICATIONS

- FAA PMA PQ5315NM, Supplement 56
- Equivalent in fit, form and function to OEM part

AIRCRAFT APPLICATION

Boeing 737-600/700/700C/800/900/900ER

DOUBLER - LEFT HAND FAN COWL

ATA Chapter: 71-10



PRODUCT DESCRIPTION

Formed section made from aluminum sheet metal that is attached to the Engine Fan Cowl. Provides reinforcement and acts as a stiffening element of the Fan Cowl skin adjacent to the Pressure Relief Door cutout

ATS PART NUMBER

314-2218-6ATSMRO

OEM PART NUMBER

314-2218-6

TECHNICAL SPECIFICATIONS

- FAA PMA PQ5315NM, Supplement 58
- Equivalent in fit, form and function to OEM part

AIRCRAFT APPLICATION

Boeing 737-600/700/700C/800/900/900ER

71: POWER PLANT

COWLING STRIKE PLATE

ATA Chapter: 71-10



PRODUCT DESCRIPTION

Strike Plate is a bent CRES sheet that provides a restraint point and wear surface for the Integrated Drive Generator. Door latches when in the closed position

ATS PART NUMBER

314-2223-1ATSMRO

OEM PART NUMBER

314-2223-1

TECHNICAL SPECIFICATIONS

- FAA PMA PQ5315NM, Supplement 48
- Equivalent in fit, form and function to OEM part

AIRCRAFT APPLICATION

Boeing 737-600/700/700C/800/900/900ER

FIRE BARRIER

ATA Chapter: 71-11



PRODUCT DESCRIPTION

Fire barriers are part of the fire containment system and prevent a fire in the engine fan compartment from spreading beyond the firewall

ATS PART NUMBER

314-2146-3ATSMRO (Left hand)
314-2146-4ATSMRO (Right hand)

OEM PART NUMBER

314-2146-3
314-2146-4

TECHNICAL SPECIFICATIONS

- FAA PMA PQ5315NM, Supplement 44
- Equivalent in fit, form and function to OEM part

AIRCRAFT APPLICATION

Boeing 737-600/700/700C/800/900/900ER

75: BLEED AIR

SPRING - COMPRESSION

ATA Chapter: 75-10, 30-21



PRODUCT DESCRIPTION

Located in the Engine Nose Cowl Thermal Anti-Ice (TAI) Valve, the Compression Spring is a component of the TAI valve body shaft. It compresses a self-aligning bearing and preloads it against the valve body to fix the bearing's position within the housing

ATS PART NUMBER

323660ATSMRO

OEM PART NUMBER

323660

TECHNICAL SPECIFICATIONS

- FAA PMA PQ5315NM, Supplement 97, 109
- Equivalent in fit, form and function to OEM

AIRCRAFT APPLICATION

Boeing MD-11F

Airbus A300 Model F4-605R

78: EXHAUST

CLIPS – FIRE SEAL

ATA Chapter: 78-31



PRODUCT DESCRIPTION

The Clips are a side plate of the Fire Barrier Assy installed on the Engine Thrust Reverser Cowl inner wall that functions as a fire barrier and to protect the Thrust Reverser seal

ATS PART NUMBER

315A2127-7ATSMRO
315A2127-8ATSMRO
315A2127-10ATSMRO

OEM PART NUMBER

315A2127-7
315A2127-8
315A2127-10

TECHNICAL SPECIFICATIONS

- FAA PMA PQ5315NM, Supplement 98
- Equivalent in fit, form and function to OEM part

AIRCRAFT APPLICATION

315A2127-7ATSMRO

Boeing 737-600/700/700C/800/900/900ER

315A2127-8ATSMRO

Boeing 737-600/700/700C/800/900/900ER

315A2127-10ATSMRO

Boeing 737-700/700C/800/900/900ER

HYDRAULIC FUSE HOUSING

ATA Chapter: 78-34, 27-81, 29-11, 32-31



PRODUCT DESCRIPTION

Precision machined tube that houses a piston, metering cone, metering body, piston spring, metering cylinder and other parts to satisfy operation parameters indicated for its application

Housing typically replaced during overhaul or rebuild of Flow Rate Fuse Assembly. Each fuse configuration has been designed to accommodate specific dimensional, weight and hydraulic interface requirements

ATS PART NUMBER

7-2882-4ATS
7-2882-5ATS
7-2882-6ATS

OEM PART NUMBER

7-2882-4
7-2882-5
7-2882-6

TECHNICAL SPECIFICATIONS

- FAA PMA PQ5315NM, Supplement 1
- Equivalent in fit, form and function to OEM assembly
- -4: 4.45-inch-Long x 1.75-inch diameter
- -5: 5.17-inch-Long x 1.75-inch diameter
- -6: 5.78-inch-Long x 1.75-inch diameter
- Approximate Weight = 0.41 lbs.
- Aluminum material

AIRCRAFT APPLICATION

Boeing 737-300/400/500/600/700/700C/800/900/900ER