

# 57: WINGS

## STIFFENER

ATA Chapter: 57-10



### PRODUCT DESCRIPTION

Acts as additional support to the LBL 24.92 vertical stiffener of the Wing Center Section Rear Spar Installation

### ATS PART NUMBER

111A1308U15ATSMRO

### OEM PART NUMBER

111A1308-15

### TECHNICAL SPECIFICATIONS

- FAA PMA PQ5315NM, Supplement 21
- Equivalent in fit, form and function to OEM assembly
- Undrilled part to facilitate back drilling

### AIRCRAFT APPLICATION

Boeing 737-600/700/700IGW/800/900/900ER

## STIFFENER – REAR SPAR, WING CENTER SECTION

ATA Chapter: 57-10



### PRODUCT DESCRIPTION

An aluminum fitting that is installed common to the Wing Center Section Rear Spar. Primarily acts as additional support to the RBL 24.92 vertical stiffener of the Wing Center Section Rear Spar Installation.

### ATS PART NUMBER

111A1308U16ATSMRO

### OEM PART NUMBER

111A1308U16

### TECHNICAL SPECIFICATIONS

- FAA PMA PQ5315NM, Supplement 64.
- Equivalent in fit, form and function to OEM.
- Material: Aluminum Alloy

### AIRCRAFT APPLICATION

Boeing 737-600/700/700C/800/900/900ER

## CLOSEOUT SKIN ASSEMBLY

ATA Chapter: 57-41



116A4411U1ATSMRO



116A4411U2ATSMRO

### PRODUCT DESCRIPTION

The purpose of the Closeout Skin Assembly is to “closeout” or extend the profile of the Leading Edge under the engine pylon so that no gap between the wing and the pylon fairing exists

### ATS PART NUMBER

116A4411U1ATSMRO

116A4411U2ATSMRO

### OEM PART NUMBER

116A4411U1

116A4411U2

### TECHNICAL SPECIFICATIONS

- FAA PMA PQ5315NM, Supplement 23
- Equivalent in fit, form and function to OEM part
- Provided as undrilled part for match drilling during installation
- 116A4411U1ATSMRO opposite to 116A4411U2ATSMRO

### AIRCRAFT APPLICATION

Boeing 737-600/700/700C/800/900/900ER

# 57: WINGS

## STRINGER ASSY

ATA Chapter: 57-41



### PRODUCT DESCRIPTION

The PMA articles are spanwise structural members of the Wing Fixed L/E that, in combination with the skin, react axial loads between the ribs. The L/E skin is riveted to the stringer and the stringer is fastened to the ribs. A bracket on the PMA articles provides a means of retaining Leading Edge Flap actuator hydraulic tubes

### ATS PART NUMBER

116A4530U1ATSMRO  
654A0004-592ATSMRO

### OEM PART NUMBER

116A4530U1  
654A0004-592

### TECHNICAL SPECIFICATIONS

- FAA PMA PQ5315NM, Supplement 23
- Equivalent in fit, form and function to OEM part
- Provided as undrilled part for match drilling during installation
- 116A4411U1ATSMRO opposite to 116A4411U2ATSMRO

### AIRCRAFT APPLICATION

Boeing 737-600/700/700C/800/900/900ER

## SUPPORT BRACKET ASSEMBLY – LWR INBD FIXED TE

ATA Chapter: 57-50



### PRODUCT DESCRIPTION

Support Bracket Assembly acts as an attachment for the tie rod that connects the lower fixed trailing edge access panel to the upper fixed trailing edge panel

### ATS PART NUMBER

115A2750Y1ATSMRO

### OEM PART NUMBER

115A2750-1, 115A2750Y1

### TECHNICAL SPECIFICATIONS

- FAA PMA PQ5315NM, Supplement 60
- Equivalent in fit, form and function to OEM assembly

### AIRCRAFT APPLICATION

Boeing 737-600/700/700C/800/900/900ER/8/9

# 57: WINGS

## BEAM ASSEMBLY

ATA Chapter: 57-50, 27-51



### PRODUCT DESCRIPTION

The Beam Assemblies are components of the Inboard Trailing Edge fixed lower panel assembly. The Beam Assy provides attachment points for adjustment rods, which can be adjusted to maintain a smooth aerodynamic surface where the fixed lower T/E panel transitions to the INBD flap

### ATS PART NUMBER

115A2759Y5ATSMRO  
115A2759Y6ATSMRO  
115A2759Y13ATSMRO  
115A2759Y14ATSMRO

### OEM PART NUMBER

115A2759Y5  
115A2759Y6  
115A2759Y13  
115A2759Y14

### TECHNICAL SPECIFICATIONS

- FAA PMA PQ5315NM, Supplement 92
- Equivalent in fit, form and function to OEM part

### AIRCRAFT APPLICATION

**115A2759Y5ATSMRO & 115A2759Y6ATSMRO:**  
Boeing 737-600/700/700C/800/900

**115A2759Y13ATSMRO & 115A2759Y14ATSMRO:**  
Boeing 737-600/700/700C/800/900ER/8/9/8200

## WIGGLE PLATE ASSEMBLY

ATA Chapter: 57-50



### PRODUCT DESCRIPTION

Provides attach points for an Inboard Fixed Trailing Edge Lower Wing Access Panel and allows the wing to flex without tearing out the fasteners on the access panel or the rear spar

### ATS PART NUMBER

115A2781-3ATSMRO  
115A2781-4ATSMRO

### OEM PART NUMBER

115A2781-3  
115A2781-4

### TECHNICAL SPECIFICATIONS

- FAA PMA PQ5315NM, Supplement 37.
- Equivalent in fit, form and function to OEM assembly.
- 115A2781-3ATSMRO opposite part to 115A2781-4ATSMRO

### AIRCRAFT APPLICATION

Boeing 737-600/700/800/900ER

# 57: WINGS

## WIGGLE PLATE ASSEMBLY

ATA Chapter: 57-50



115A2781-13ATSMRO



115A2781-14ATSMRO

### PRODUCT DESCRIPTION

Provides attach points for an Inboard Fixed Trailing Edge Lower Wing Access Panel and allows the wing to flex without tearing out the fasteners on the access panel or the rear spar

### ATS PART NUMBER

115A2781-13ATSMRO  
115A2781-14ATSMRO

### OEM PART NUMBER

115A2781-13  
115A2781-14

### TECHNICAL SPECIFICATIONS

- FAA PMA PQ5315NM, Supplement 33.
- Equivalent in fit, form and function to OEM assembly.
- 115A2781-13ATSMRO opposite part to 115A2781-14ATSMRO

### AIRCRAFT APPLICATION

Boeing 737-600/700/800/900ER

## WIGGLE PLATE ASSEMBLY – INBOARD FIXED T/E

ATA Chapter: 57-50

115A2781-15ATSMRO



115A2781-16ATSMRO

115A2781-202ATSMRO



115A2781-201ATSMRO

### PRODUCT DESCRIPTION

The Wiggle Plate Assy provides attach points for an Inboard Fixed Trailing Edge Lower Wing Access Panel and allows the wing to flex without tearing out the fasteners on the access panel or the rear spar

### ATS PART NUMBER

115A2781-15ATSMRO  
115A2781-16ATSMRO  
115A2781-201ATSMRO  
115A2781-202ATSMRO

### OEM PART NUMBER

115A2781-15  
115A2781-16  
115A2781-201  
115A2781-202

### TECHNICAL SPECIFICATIONS

- FAA PMA PQ5315NM, Supplement 117
- Equivalent in fit, form and function to OEM part

### AIRCRAFT APPLICATION

Boeing 737-700/800/8

# 57: WINGS

## BULB SEAL – WING INBD FIXED T/E

ATA Chapter: 57-50



### PRODUCT DESCRIPTION

The Bulb Seal is a component of the Upper Inboard Fixed T/E on the LH/RH Wing. It provides a smooth aerodynamic surface between access panels, while filling the gap to act as a moisture barrier

### ATS PART NUMBER

115A2795-2ATSMRO

### OEM PART NUMBER

115A2795-2

### TECHNICAL SPECIFICATIONS

- FAA PMA PQ5315NM, Supplement 112
- Equivalent in fit, form and function to OEM part

### AIRCRAFT APPLICATION

Boeing 737-700/800/8

## BRACKET ASSY – MAIN LANDING GEAR BEAM

ATA Chapter: 57-51



115A2162-21ATSMRO 115A2162-22ATSMRO

### PRODUCT DESCRIPTION

The Bracket Assy is installed on the Main Landing Gear Beam on the LH and RH wing. It provides attach points for tie rods that support the Wing Inboard Fixed Trailing Edge structure

### ATS PART NUMBER

115A2162-21ATSMRO

115A2162-22ATSMRO

### OEM PART NUMBER

115A2162-21

115A2162-22

### TECHNICAL SPECIFICATIONS

- FAA PMA PQ5315NM, Supplement 115
- Equivalent in fit, form and function to OEM part

### AIRCRAFT APPLICATION

Boeing 737-700/800/8

## SERRATED PLATE

ATA Chapter: 57-51



### PRODUCT DESCRIPTION

The Serrated Plates are components of the wing T/E and function to stabilize the Rib Assy via its serrations. The serrations allow for vertical adjustment when realignment may be required

### ATS PART NUMBER

115A2183Y1ATSMRO

115A2183-3ATSMRO

115A2183-4ATSMRO

### OEM PART NUMBER

115A2183Y1

115A2183-3

115A2183-4

### TECHNICAL SPECIFICATIONS

- FAA PMA PQ5315NM, Supplement 101
- Equivalent in fit, form and function to OEM part

### AIRCRAFT APPLICATION

**115A2183Y1ATSMRO:**

Boeing 737-600/700/700C/800/900/900ER

**115A2183-3ATSMRO & 115A2183-4ATSMRO:**

Boeing 737-600/700/700C/800/900ER

# 57: WINGS

## BEAM ASSY – BEAM ASSY, KIT

ATA Chapter: 57-51



### PRODUCT DESCRIPTION

The Beam Assy is a part of the wing fixed T/E structure. It acts as a stiffening element while providing support for the fixed T/E lower access panels

### ATS PART NUMBER

#### BEAM ASSY

115A3758-9ATSMRO

#### BEAM ASSY, KIT

654A0004-622ATSMRO

### OEM PART NUMBER

115A3758-9

654A0004-622

115A3758-34

### TECHNICAL SPECIFICATIONS

- FAA PMA PQ5315NM, Supplement 103
- Equivalent in fit, form and function to OEM part

### AIRCRAFT APPLICATION

Boeing 737-600/700/700C/800/900/900ER/  
8/9/8200

## RIB – DEFLECTION CONTROL, OUTBOARD T/E FLAP

ATA Chapter: 57-53



### PRODUCT DESCRIPTION

The Deflection Control Ribs are installed on the Trailing Edge Outboard Main Flaps. They provide structural support and control deflection angle of the Outboard Main Flaps during extension and retraction

### ATS PART NUMBER

113A3241U1ATSMRO

113A3241U2ATSMRO

### OEM PART NUMBER

113A3241U1

113A3241U2

### TECHNICAL SPECIFICATIONS

- FAA PMA PQ5315NM, Supplement 120
- Equivalent in fit, form and function to OEM part

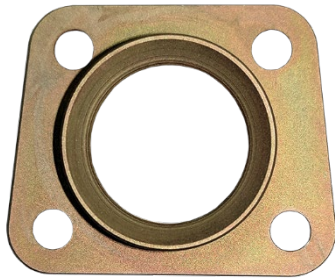
### AIRCRAFT APPLICATION

Boeing 737-700/800

# 57: WINGS

## BUSHING - ADJUST LINK

ATA Chapter: 57-53, 27-51



### PRODUCT DESCRIPTION

Component of the Flap Track Fairing Module that serves as an aft attach point to hold the #1/#2/#3/#6/#7/#8 Flap Track Fairing in place

### ATS PART NUMBER

113A9120-1ATSMRO

### OEM PART NUMBER

113A9120-1

### TECHNICAL SPECIFICATIONS

- Bushing - Adjust Link (P/N: 113A9120-1ATSMRO) is a detail that feeds into Adjust Link Assembly (P/N: 113A9305-5ATSMRO, Supplement 24)

### AIRCRAFT APPLICATION

Boeing 737-600/700/800/900/900ER/8

## BUSHING

ATA Chapter: 57-53



### PRODUCT DESCRIPTION

The Bushings are components of the Flap Track Fairing Module, which improves aerodynamic efficiency. In combination with the Pivot Bolts that mate inside the Bushings, they function to provide an attachment and pivot point for the aft section of the Fairing Module

### ATS PART NUMBER

113A9209-2ATSMRO

113A9309-2ATSMRO

### OEM PART NUMBER

113A9209-2

113A9309-2

### TECHNICAL SPECIFICATIONS

- FAA PMA PQ5315NM, Supplement 93
- Equivalent in fit, form and function to OEM part

### AIRCRAFT APPLICATION

Boeing 700/700C/800/900ER/8/9/8200

## ADJUST LINK ASSEMBLY

ATA Chapter: 57-53, 27-51



### PRODUCT DESCRIPTION

Component of the Flap Track Fairing Module that serves as an aft attach point to hold the #3 and #6 Flap Track Fairing in place

### ATS PART NUMBER

113A9305-5ATSMRO

### OEM PART NUMBER

113A9305-5

### TECHNICAL SPECIFICATIONS

- FAA PMA PQ5315NM, Supplement 24.
- Equivalent in fit, form and function to OEM assembly.
- 15.3 inches long x 6.8 inches wide x 1.9 inches deep.
- Approximate Weight = 1.65 lbs

### AIRCRAFT APPLICATION

Boeing 737-600/700/800/900/900ER/8



Trusted Partners  
Supporting Flight

# 57: WINGS

## ADJUST LINK

ATA Chapter: 57-53, 27-51



### PRODUCT DESCRIPTION

Component of the Flap Track Fairing Module that serves as an aft attach point to hold the #3 and #6 Flap Track Fairing in place

### ATS PART NUMBER

113A9305-7ATSMRO

### OEM PART NUMBER

113A9305-7

### TECHNICAL SPECIFICATIONS

- Adjust Link (P/N: 113A9305-7ATSMRO) is a detail that feeds into Adjust Link Assembly (P/N: 113A9305-5ATSMRO, Supplement 24)

### AIRCRAFT APPLICATION

Boeing 737-600/700/800/900/900ER/8

## AFT BULKHEAD - FLAP SUPPORT

ATA Chapter: 57-53, 27-51

113A9360-1ATSMRO



### PRODUCT DESCRIPTION

The Bulkhead Assy is a component of the inboard T/E flap AFT Fairing. It functions to support a link and rod assembly used to adjust clearance between the top surface of the AFT Fairing and T/E flap

### ATS PART NUMBER

113A9360-1ATSMRO

113A9360-2ATSMRO

### OEM PART NUMBER

113A9360-1

113A9360-2

### TECHNICAL SPECIFICATIONS

- FAA PMA PQ5315NM, Supplement 101
- Equivalent in fit, form and function to OEM part

### AIRCRAFT APPLICATION

Boeing 737-600/700/700C/800/900/900ER



113A9360-2ATSMRO



# 57: WINGS

## RETAINER

ATA Chapter: 57-53, 27-51



### PRODUCT DESCRIPTION

Component of the Flap Track Fairing Module that serves as an aft attach point to hold the #1/#2/#3/#6/#7/#8 Flap Track Fairing in place

### ATS PART NUMBER

69B14136-2ATSMRO

### OEM PART NUMBER

69B14136-2

### TECHNICAL SPECIFICATIONS

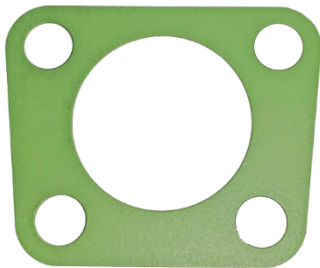
- Retainer (P/N: 69B14136-2ATSMRO) is a detail that feeds into Adjust Link Assembly (P/N: 113A9305-5ATSMRO, Supplement 24)

### AIRCRAFT APPLICATION

Boeing 737-600/700/800/900/900ER/8

## SHIM - LAMINATED

ATA Chapter: 57-53, 27-51



### PRODUCT DESCRIPTION

Component of the Flap Track Fairing Module that serves as an aft attach point to hold the #1/#2/#3/#6/#7/#8 Flap Track Fairing in place

### ATS PART NUMBER

69B14136-3ATSMRO

### OEM PART NUMBER

69B14136-3

### TECHNICAL SPECIFICATIONS

- Shim - Laminated (P/N: 69B14136-3ATSMRO) is a detail that feeds into Adjust Link Assembly (P/N: 113A9305-5ATSMRO, Supplement 24)

### AIRCRAFT APPLICATION

Boeing 737-600/700/800/900/900ER/8

## RETAINER - KRUEGER SEAL

ATA Chapter: 57-56, 27-81



114A1811-1ATSMRO

114A1811-2ATSMRO

### PRODUCT DESCRIPTION

The Retainer secures a Krueger Flap Seal. During Flap extension and retraction, the Krueger Seal protects the Thrust Reverser from abrading the Krueger Flap

### ATS PART NUMBER

114A1811-1ATSMRO  
114A1811-2ATSMRO

### OEM PART NUMBER

114A1811-1  
114A1811-2

### TECHNICAL SPECIFICATIONS

- FAA PMA PQ5315NM, Supplement 103
- Equivalent in fit, form and function to OEM part

### AIRCRAFT APPLICATION

Boeing 737-600/700/700C/800/900/900ER

# 57: WINGS

## WEAR PAD – KRUEGER SEAL

ATA Chapter: 57-56, 27-81



### PRODUCT DESCRIPTION

The Wear Pad fastens to the Krueger Seal Retainer. During Flap extension and retraction, the Krueger Seal assembly protects the Thrust Reverser from abrading the Krueger Flap

### ATS PART NUMBER

114A1811-3ATSMRO

### OEM PART NUMBER

114A1811-3

### TECHNICAL SPECIFICATIONS

- FAA PMA PQ5315NM, Supplement 103
- Equivalent in fit, form and function to OEM part

### AIRCRAFT APPLICATION

Boeing 737-600/700/700C/800/900/900ER