

# 53: FUSELAGE

## INTERCOSTAL – AFT CARGO BAY

ATA Chapter: 53-00



### PRODUCT DESCRIPTION

Located between STA 827 and STA 847 in the Aft Cargo Bay. Primarily acts as a stiffening element to protect the surrounding structure from incidental damage

### ATS PART NUMBER

146A7505U8ATSMRO

### OEM PART NUMBER

146A7505-8

### TECHNICAL SPECIFICATIONS

- FAA PMA PQ5315NM, Supplement 73.
- Equivalent in fit, form and function to OEM.
- Material: Aluminum Alloy

### AIRCRAFT APPLICATION

Boeing 737-600/700/700C/900/900ER

## WEB – AFT CARGO DOOR SURROUND

ATA Chapter: 53-00



### PRODUCT DESCRIPTION

Sits under the Scuff Plate of the Aft Cargo Door. Primarily acts as a lower frame of the door and provides an attach point for the Scuff Plate, which protects the underlying structure from environmental effects

### ATS PART NUMBER

146A8123U25ATSMRO

### OEM PART NUMBER

146A8123-25  
146A8123U25

### TECHNICAL SPECIFICATIONS

- FAA PMA PQ5315NM, Supplement 73.
- Equivalent in fit, form and function to OEM.
- Material: Aluminum Alloy

### AIRCRAFT APPLICATION

Boeing 737-700/700C/800/900ER/8/9

## ANGLE – AFT CARGO DOOR SURROUND

ATA Chapter: 53-00



### PRODUCT DESCRIPTION

Installs onto the Aft Cargo Door Sill Web to increase structural stability and stiffness of the assembly. Also provides additional attach points for the Scuff Plate

### ATS PART NUMBER

146A8125U53ATSMRO

### OEM PART NUMBER

146A8125-53

### TECHNICAL SPECIFICATIONS

- FAA PMA PQ5315NM, Supplement 73.
- Equivalent in fit, form and function to OEM.
- Material: Aluminum Alloy

### AIRCRAFT APPLICATION

Boeing 737-600/700/700C/800/900/900ER/8/9

# 53: FUSELAGE

## SHIELD ASSEMBLY – AFT CARGO DOOR SURROUND

ATA Chapter: 53-00



### PRODUCT DESCRIPTION

Installs above the Aft Cargo Door Sill Web/Angle. Primarily acts as a continuation of the Scuff Plate to provide additional environmental protection and to distribute cargo/personnel loading to avoid incidental flange bending of the underlying floor structure

### ATS PART NUMBER

146A8127U5ATSMRO

### OEM PART NUMBER

146A8127-5  
146A8127Y5

### TECHNICAL SPECIFICATIONS

- FAA PMA PQ5315NM, Supplement 73.
- Equivalent in fit, form and function to OEM.
- Material: Aluminum Alloy

### AIRCRAFT APPLICATION

Boeing 737-600/700/700C/800/900

## STRAP – AFT CARGO DOOR SURROUND

ATA Chapter: 53-00



### PRODUCT DESCRIPTION

Component of the Aft Cargo Door larger Lower Main Sill Assembly and interfaces between the Scuff Plate and Sill Web. Primarily acts as a stiffening element along the Sill web

### ATS PART NUMBER

146A8128U14ATSMRO

### OEM PART NUMBER

146A8128-14  
146A8128U14  
146A8128Y14

### TECHNICAL SPECIFICATIONS

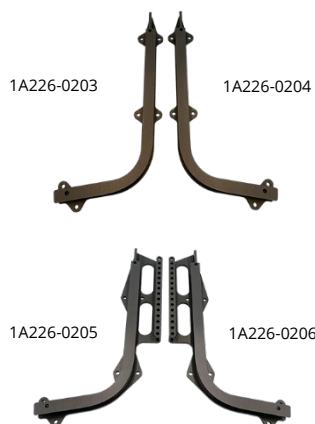
- FAA PMA PQ5315NM, Supplement 73.
- Equivalent in fit, form and function to OEM.
- Material: Aluminum Alloy

### AIRCRAFT APPLICATION

Boeing 737-600/700/700C/800/900/900ER/8/9

## FLIGHT DECK SEAT TRACKS

ATA Chapter: 53-10, 25-11



### PRODUCT DESCRIPTION

Shorter lead time and less cost replacement parts for flight deck seat tracks as compared to OEM components

### ATS PART NUMBER

1A226-0201ATSMRO / 1A226-0202ATSMRO  
1A226-0203ATSMRO / 1A226-0204ATSMRO  
1A226-0205ATSMRO / 1A226-0206ATSMRO  
1A296-0339ATSMRO / 1A296-0340ATSMRO

### OEM PART NUMBER

1A226-0201 / 1A226-0202  
1A226-0203 / 1A226-0204  
1A226-0205 / 1A226-0206  
1A296-0339 / 1A296-0340

### TECHNICAL SPECIFICATIONS

- FAA PMA PQ5315NM, Supplement 59
- Equivalent in fit, form and function to OEM

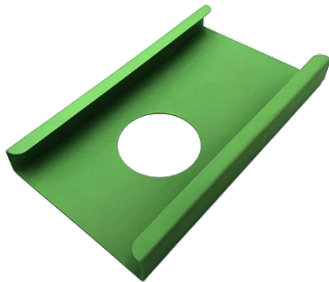
### AIRCRAFT APPLICATION

Boeing 737-600/700/700C/800/900/900ER/8/9

# 53: FUSELAGE

## CHANNEL - FLIGHT DECK

ATA Chapter: 53-10



### PRODUCT DESCRIPTION

As a component of the flight compartment floor step assembly, the Channel provides support and attachment for a removable access panel which permits access for internal zonal inspections

### ATS PART NUMBER

141A5211U1ATSMRO

### OEM PART NUMBER

141A5211U1

### TECHNICAL SPECIFICATIONS

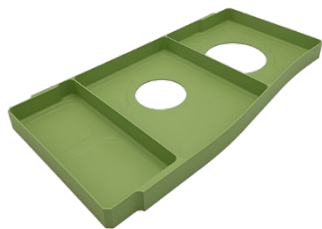
- FAA PMA PQ5315NM, Supplement 78.
- Equivalent in fit, form and function to OEM.
- Material: Aluminum Alloy

### AIRCRAFT APPLICATION

Boeing 737-600/700/700C/800/900/900ER

## INTERCOSTAL

ATA Chapter: 53-10



### PRODUCT DESCRIPTION

The PMA article is located at BL 0, spanning the STA 344 to STA 360 floor beams the passenger cabin. It transfers loads into the floor beams and provides attachment and support for floor panels

### ATS PART NUMBER

141A5410U23ATSMRO

### OEM PART NUMBER

141A5410U23

### TECHNICAL SPECIFICATIONS

- FAA PMA PQ5315NM, Supplement 105
- Equivalent in fit, form and function to OEM part

### AIRCRAFT APPLICATION

Boeing 737-600/700/700C/800/900/900ER

## INTERCOSTAL - SECTION 41

ATA Chapter: 53-10



### PRODUCT DESCRIPTION

The Intercoastals are located in the Section 41 cabin floor and function to stiffen the adjacent floor structure and support floor panels

### ATS PART NUMBER

141A5410U139ATSMRO  
141A5410U141ATSMRO

### OEM PART NUMBER

141A5410U139  
141A5410U141

### TECHNICAL SPECIFICATIONS

- FAA PMA PQ5315NM, Supplement 101
- Equivalent in fit, form and function to OEM part

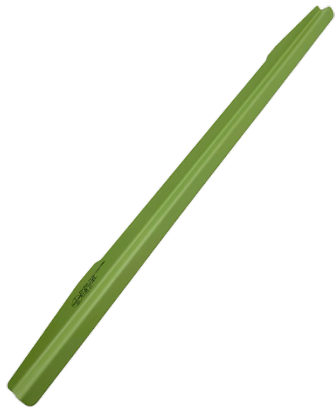
### AIRCRAFT APPLICATION

Boeing 737-600/700/700C/800/900/900ER/  
8/9/8200

# 53: FUSELAGE

## CHORD – ZEE, FORWARD ENTRY DOOR SILL

ATA Chapter: 53-10



### PRODUCT DESCRIPTION

Formed stiffener installed on the Lower Main Sill web of Forward Entry Door, as component of the Section 41 Door Surround Structure. The Zee Chord primarily function as a support and attachment point for the Center Scuff Plate with Lower Sill web

### ATS PART NUMBER

141A8112U2ATSMRO

### OEM PART NUMBER

141A8112-2

### TECHNICAL SPECIFICATIONS

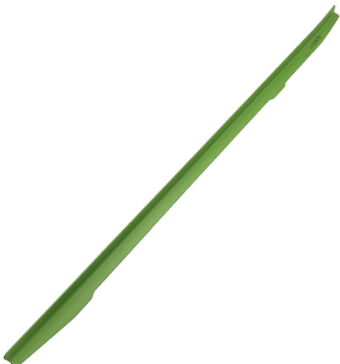
- FAA PMA PQ5315NM, Supplement 62.
- Equivalent in fit, form and function to OEM.
- Material: Aluminum Alloy

### AIRCRAFT APPLICATION

Boeing 737-600/700/700C/800/900/900ER/8/9

## ANGLE – FORWARD ENTRY DOOR SILL

ATA Chapter: 53-10



### PRODUCT DESCRIPTION

Formed stiffener installed on the Lower Main Sill web of Forward Entry Door, as component of the Section 41 Door Surround Structure. The Zee Chord primarily function as a support and attachment point for the Center Scuff Plate with Lower Sill web

### ATS PART NUMBER

141A8112U20ATSMRO

### OEM PART NUMBER

141A8112-20

### TECHNICAL SPECIFICATIONS

- FAA PMA PQ5315NM, Supplement 62.
- Equivalent in fit, form and function to OEM.
- Material: Aluminum Alloy

### AIRCRAFT APPLICATION

Boeing 737-600/700/700C/800/900/900ER/8/9

## ANGLE – FORWARD ENTRY DOOR SILL

ATA Chapter: 53-10

### PRODUCT DESCRIPTION

Formed stiffener installed on the Lower Main Sill web of Galley Door, as component of the Section 41 Door Surround Structure. The Zee Chord primarily function as a support and attachment point for the Center Scuff Plate with Lower Sill web

### ATS PART NUMBER

141A8312U5ATSMRO

### OEM PART NUMBER

141A8312-5

141A8312Y5

### TECHNICAL SPECIFICATIONS

- FAA PMA PQ5315NM, Supplement 62.
- Equivalent in fit, form and function to OEM.
- Material: Aluminum Alloy

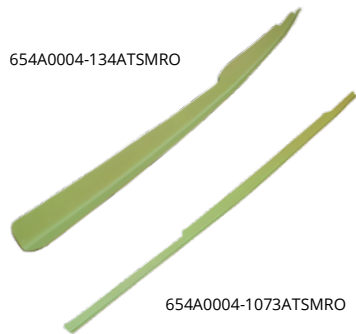
### AIRCRAFT APPLICATION

Boeing 737-600/700/700C/800/900/900ER/8/9

# 53: FUSELAGE

## INNER CHORD – GALLERY DOOR MOPSILL

ATA Chapter: 53-10



### PRODUCT DESCRIPTION

Components of Section 41 Door Surround Structure

### ATS PART NUMBER

654A0004-134ATSMRO  
654A0004-1073ATSMRO

### OEM PART NUMBER

654A0004-134  
654A0004-1073

### TECHNICAL SPECIFICATIONS

- FAA PMA PQ5315NM, Supplement 54
- Equivalent in fit, form and function to OEM part
- Current OEM ICA information is applicable to parts

### AIRCRAFT APPLICATION

Boeing 737-600/700/800/900/900ER/8/9

## PANEL, REMOVABLE – FLIGHT DECK

ATA Chapter: 53-10



### PRODUCT DESCRIPTION

As a component of the flight compartment floor, the removable panel permits access for internal zonal inspections. In addition, the panel acts as a floor web in the crew area

### ATS PART NUMBER

141A5133U15ATSMRO

### OEM PART NUMBER

141A5133U15

### TECHNICAL SPECIFICATIONS

- FAA PMA PQ5315NM, Supplement 78.
- Equivalent in fit, form and function to OEM.
- Material: Aluminum Alloy

### AIRCRAFT APPLICATION

Boeing 737-600/700/700C/800/900/900ER/8/9

## INTERCOSTAL, LAV A SUPPORT

ATA Chapter: 53-10



### PRODUCT DESCRIPTION

Spans between floor beams to stiffen the floor structure. Supports one of four lavatory A floor fitting attach points

### ATS PART NUMBER

141A5690U1ATSMRO

### OEM PART NUMBER

141A5690-1  
141A5690U1  
141A5690Y1

### TECHNICAL SPECIFICATIONS

- FAA PMA PQ5315NM, Supplement 80
- Equivalent in fit, form and function to OEM part

### AIRCRAFT APPLICATION

Boeing 737-600/700/700C/800/900/900ER

# 53: FUSELAGE

## GUIDE TRACK ASSEMBLY – FWD ENTRY DOOR, STA 348.2

ATA Chapter: 53-11, 52-11



### PRODUCT DESCRIPTION

Interfaces with the fwd entry door-side ball guide to ensure door is properly located during open/close

### ATS PART NUMBER

141A6206-2ATSMRO

### OEM PART NUMBER

141A6206-2

### TECHNICAL SPECIFICATIONS

- FAA PMA PQ5315NM, Supplement 81
- Equivalent in fit, form and function to OEM assembly

### AIRCRAFT APPLICATION

Boeing 737-600/700/800/900/900ER/8/9

## BRACKET ASSEMBLY – STA 727 BULKHEAD

ATA Chapter: 53-11



### PRODUCT DESCRIPTION

Located on the STA 727 Wheel Well Bulkhead and provides support for the 453A1210-( ) Shroud

### ATS PART NUMBER

144A9401U20ATSMRO

### OEM PART NUMBER

144A9401U20

### TECHNICAL SPECIFICATIONS

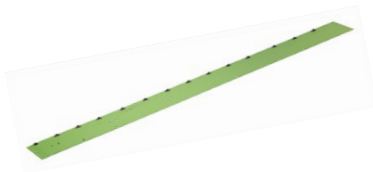
- FAA PMA PQ5315NM, Supplement 78.
- Equivalent in fit, form and function to OEM.
- Material: Clad Aluminum Sheet

### AIRCRAFT APPLICATION

Boeing 737-600/700/700C/800/900/900ER/8/9

## AFT REVEAL ASSEMBLY

ATA Chapter: 53-11



### PRODUCT DESCRIPTION

Component of the Aft Cargo Door Surround Structure. Primary function is to hold a section of the lining of the cargo compartment in place

### ATS PART NUMBER

146A9403-237ATSMRO

### OEM PART NUMBER

146A9403-237

### TECHNICAL SPECIFICATIONS

- FAA PMA PQ5315NM, Supplement 15
- Equivalent in fit, form and function to OEM assembly
- Aluminum material

### AIRCRAFT APPLICATION

Boeing 737-600/700/700C/800/900/900ER/8/9



# 53: FUSELAGE

## FITTING – AFT DOOR, STA 992.8

ATA Chapter: 53-11, 52-11



### PRODUCT DESCRIPTION

Interfaces with the aft entry and galley door-side ball guide to ensure door is properly located during open/close

### ATS PART NUMBER

654A0004-24ATSMRO

### OEM PART NUMBER

654A0004-24  
147A6158-1

### TECHNICAL SPECIFICATIONS

- FAA PMA PQ5315NM, Supplement 81
- Equivalent in fit, form and function to OEM part

### AIRCRAFT APPLICATION

Boeing 737-600/700/700C/800/900/900ER/8/9

## FITTING – GALLEY DOOR, STA 328

ATA Chapter: 53-11, 52-11



### PRODUCT DESCRIPTION

Interfaces with the fwd galley door-side ball guide to ensure door is properly located during open/close

### ATS PART NUMBER

654A0004-28ATSMRO

### OEM PART NUMBER

654A0004-28  
141A6557-1

### TECHNICAL SPECIFICATIONS

- FAA PMA PQ5315NM, Supplement 81
- Equivalent in fit, form and function to OEM part

### AIRCRAFT APPLICATION

Boeing 737-600/700/700C/800/900/900ER/8/9

## FILLER – STA 796, AFT CARGO DOOR

ATA Chapter: 53-13, 51-00



### PRODUCT DESCRIPTION

Function as a ramp in the upper corners of the scuff plates to the doorway to give a smooth transition for the door seal

### ATS PART NUMBER

146A8344-1ATSMRO

### OEM PART NUMBER

146A8344-1

### TECHNICAL SPECIFICATIONS

- FAA PMA PQ5315NM, Supplement 65
- Equivalent in fit, form and function to OEM part

### AIRCRAFT APPLICATION

Boeing 737-600/700/700C/800/900/900ER/8/9

# 53: FUSELAGE

## FILLER – STA 846, AFT CARGO DOOR

ATA Chapter: 53-13, 51-00



### PRODUCT DESCRIPTION

Function as a ramp in the upper corners of the scuff plates to the doorway to give a smooth transition for the door seal

### ATS PART NUMBER

146A8344-2ATSMRO

### OEM PART NUMBER

146A8344-2

### TECHNICAL SPECIFICATIONS

- FAA PMA PQ5315NM, Supplement 65
- Equivalent in fit, form and function to OEM part

### AIRCRAFT APPLICATION

Boeing 737-600/700/700C/800/900/900ER/8/9

## STIFFENER – WATER SERVICE PANEL, AFT CARGO COMPARTMENT

ATA Chapter: 53-13, 52-49



### PRODUCT DESCRIPTION

Located between STA 907 and STA 927 and mounts to the supporting intercostals to provide additional stiffness to the water tank service panel support structure.

### ATS PART NUMBER

147A7221Y32ATSMRO

### OEM PART NUMBER

147A7221Y32

### TECHNICAL SPECIFICATIONS

- FAA PMA PQ5315NM, Supplement 69.
- Equivalent in fit, form and function to OEM.
- Material: Aluminum Alloy

### AIRCRAFT APPLICATION

Boeing 737-600/700/700C/800/900/900ER/8/9

## ANGLE, FLOOR BOARD & CHORD – UPPER

ATA Chapter: 53-30



143A5410-170ATSMRO

143A5410U174ATSMRO

### PRODUCT DESCRIPTION

The Angle is located in the Section 43 main deck floor structure, and stiffens the adjacent floor structure while providing a means of attachment for the floor panels.

The Upper Chord is located in the Section 43 main deck floor structure, and stiffens the adjacent floor structure while providing a means of attachment for the floor panels

### ATS PART NUMBER

#### Angle, Floor Board

143A5410-170ATSMRO

#### Chord – Upper

143A5410U174ATSMRO

### OEM PART NUMBER

143A5410-170

143A5410U174

### TECHNICAL SPECIFICATIONS

- FAA PMA PQ5315NM, Supplement 107
- Equivalent in fit, form and function to OEM part

### AIRCRAFT APPLICATION

Boeing 737-700/800/8



# 53: FUSELAGE

## SIDEPLATE CHANNEL ASSEMBLY – CARGO FLOOR SUPPORT, SECTION 43

ATA Chapter: 53-30



### PRODUCT DESCRIPTION

Component of the Forward Cargo Compartment floor structure. Primarily provides a means of retention for the cargo compartment floor and sidewall panels

### ATS PART NUMBER

143A7501U186ATSMRO

### OEM PART NUMBER

143A7501U186

### TECHNICAL SPECIFICATIONS

- FAA PMA PQ5315NM, Supplement 70.
- Equivalent in fit, form and function to OEM.
- Material: Aluminum Alloy

### AIRCRAFT APPLICATION

Boeing 737-700/700C

## CHANNEL ASSEMBLY – FWD CARGO FLOOR

ATA Chapter: 53-30



### PRODUCT DESCRIPTION

The Channel Assy is located in the FWD Cargo Compartment and provides a means of attachment between the floor and sidewall panels in Section 43

### ATS PART NUMBER

143A7501U188ATSMRO

### OEM PART NUMBER

143A7501U188

### TECHNICAL SPECIFICATIONS

- FAA PMA PQ5315NM, Supplement 121
- Equivalent in fit, form and function to OEM part

### AIRCRAFT APPLICATION

Boeing 737-800/8

# 53: FUSELAGE

## CLIP – CARGO FLOOR

ATA Chapter: 53-30, 53-42



### PRODUCT DESCRIPTION

The Clips are a component of the Section 43 Cargo Floor Support Installation and attach outboard baffle assemblies to various frames

### ATS PART NUMBER

143A7502U159ATSMRO  
143A7502U160ATSMRO

### OEM PART NUMBER

143A7502U159  
143A7502U160

### TECHNICAL SPECIFICATIONS

- FAA PMA PQ5315NM, Supplement 90
- Equivalent in fit, form, and function to OEM assembly

### AIRCRAFT APPLICATION

Boeing 737-600/700/700C/800/900ER/8/9/8200

## BAFFLE ASSEMBLY – FORWARD CARGO FLOOR

ATA Chapter: 53-30



### PRODUCT DESCRIPTION

Components of the forward cargo compartment floor structure. Primary function is to add stiffness to the sideplate channels between the fuselage frames and provide a means of retention for the cargo compartment sidewall liners

### ATS PART NUMBER

143A7510-9ATSMRO

### OEM PART NUMBER

143A7510-9

### TECHNICAL SPECIFICATIONS

- FAA PMA PQ5315NM, Supplement 76.
- Equivalent in fit, form and function to OEM.
- Material: Aluminum

### AIRCRAFT APPLICATION

Boeing 737-600/700/700C/800/900/900ER/8/9

## BAFFLE ASSEMBLY – FORWARD CARGO FLOOR

ATA Chapter: 53-30



### PRODUCT DESCRIPTION

Components of the forward cargo compartment floor structure. Primary function is to add stiffness to the sideplate channels between the fuselage frames and provide a means of retention for the cargo compartment sidewall liners.

### ATS PART NUMBER

143A7510-15ATSMRO

### OEM PART NUMBER

143A7510-15

### TECHNICAL SPECIFICATIONS

- FAA PMA PQ5315NM, Supplement 76.
- Equivalent in fit, form and function to OEM.
- Material: Aluminum

### AIRCRAFT APPLICATION

Boeing 737-700/700C

# 53: FUSELAGE

## BAFFLE ASSEMBLY – FORWARD CARGO FLOOR

ATA Chapter: 53-30



### PRODUCT DESCRIPTION

Components of the forward cargo compartment floor structure. Primary function is to add stiffness to the sideplate channels between the fuselage frames and provide a means of retention for the cargo compartment sidewall liners.

### ATS PART NUMBER

143A7510-21ATSMRO

### OEM PART NUMBER

143A7510-21

### TECHNICAL SPECIFICATIONS

- FAA PMA PQ5315NM, Supplement 76.
- Equivalent in fit, form and function to OEM.
- Material: Aluminum

### AIRCRAFT APPLICATION

Boeing 737-800/900/900ER/8/9

## BAFFLE ASSEMBLY – FORWARD CARGO FLOOR

ATA Chapter: 53-30



### PRODUCT DESCRIPTION

Components of the forward cargo compartment floor structure. Primary function is to add stiffness to the sideplate channels between the fuselage frames and provide a means of retention for the cargo compartment sidewall liners.

### ATS PART NUMBER

143A7510-22ATSMRO

### OEM PART NUMBER

143A7510-22

### TECHNICAL SPECIFICATIONS

- FAA PMA PQ5315NM, Supplement 76.
- Equivalent in fit, form and function to OEM.
- Material: Aluminum

### AIRCRAFT APPLICATION

Boeing 737-800/900/900ER/8/9

## SHIELD ASSEMBLY

ATA Chapter: 53-30



### PRODUCT DESCRIPTION

Attachment points for floor and sidewall panels of the forward cargo bay

### ATS PART NUMBER

143A8126U21ATSMRO

### OEM PART NUMBER

143A8126U21

### TECHNICAL SPECIFICATIONS

- FAA PMA PQ5315NM, Supplement 34
- Equivalent in fit, form and function to OEM assembly
- 143A8126U21ATSMRO installs forward of the forward cargo bay door

### AIRCRAFT APPLICATION

Boeing 737-700/700C/800/900/900ER/8/9

# 53: FUSELAGE

## SHIELD ASSEMBLY

ATA Chapter: 53-30



### PRODUCT DESCRIPTION

Attachment points for floor and sidewall panels of the forward cargo bay

### ATS PART NUMBER

143A8126U31ATSMRO

### OEM PART NUMBER

143A8126U31

### TECHNICAL SPECIFICATIONS

- FAA PMA PQ5315NM, Supplement 34
- Equivalent in fit, form and function to OEM assembly
- 143A8126U31ATSMRO installs aft of the forward cargo bay door

### AIRCRAFT APPLICATION

Boeing 737-700/700C

## SHIELD ASSEMBLY

ATA Chapter: 53-30

### PRODUCT DESCRIPTION

The Shield Assy provides a means of retention for the cargo compartment floor panels and sidewall liners

### ATS PART NUMBER

143A8126Y38ATSMRO

### OEM PART NUMBER

143A8126-38

### TECHNICAL SPECIFICATIONS

- FAA PMA PQ5315NM, Supplement 91
- Equivalent in fit, form, and function to OEM assembly

### AIRCRAFT APPLICATION

Boeing 737-800/900ER/8/9/8200

## SCUFF PLATE - FORWARD CARGO DOOR

ATA Chapter: 53-30



### PRODUCT DESCRIPTION

Components of the cargo doorway lower main sill. Primarily designed to resist impact damage from cargo and protect underlying structure from environmental effects.

### ATS PART NUMBER

143A8333-8ATSMRO

### OEM PART NUMBER

143A8333-8

### TECHNICAL SPECIFICATIONS

- FAA PMA PQ5315NM, Supplement 75.
- Equivalent in fit, form and function to OEM.
- Material: Titanium

### AIRCRAFT APPLICATION

Boeing 737-600/700/700C/800/900/900ER/8/9

# 53: FUSELAGE

## AFT REVEAL ASSEMBLY – FORWARD CARGO DOOR SURROUND

ATA Chapter: 53-30



### PRODUCT DESCRIPTION

Consists of a flat sheet of aluminum with nutplates and a strip of Skyflex tape to provide a seal at the frame inner chord installation. Primarily acts as a scuff plate to protect the aft edge of the Forward Cargo Door Surround from cargo damage.

### ATS PART NUMBER

143A9403U188ATSMRO

### OEM PART NUMBER

143A9403-188  
143A9403U188  
143A9403Y188

### TECHNICAL SPECIFICATIONS

- FAA PMA PQ5315NM, Supplement 72.
- Equivalent in fit, form and function to OEM.
- Material: Aluminum Alloy

### AIRCRAFT APPLICATION

Boeing 737-600/700/700C/800/900/900ER/8/9

## CLIP – BULKHEAD SUPPORT

ATA Chapter: 53-30



### PRODUCT DESCRIPTION

The PMA article is a component of the Fwd Cargo Compartment, Aft Bulkhead structure. It functions to support the Aft Bulkhead structure by connecting the frame of the Bulkhead to the left and right Rail Assys. These in turn provide a means for the Bulkhead Panel attachment

### ATS PART NUMBER

143A9485U21ATSMRO

### OEM PART NUMBER

143A9485U21

### TECHNICAL SPECIFICATIONS

- FAA PMA PQ5315NM, Supplement 105
- Equivalent in fit, form and function to OEM part

### AIRCRAFT APPLICATION

Boeing 737-700/800/900ER/8/9

## DOOR ASSEMBLY – FWD FAIRING ACCESS

ATA Chapter: 53-30, 52-49, 53-51



### PRODUCT DESCRIPTION

The Door Assembly is located between STA 520 and STA 540 on the belly of the aircraft, and provides access to the ground conditioned air connector.

### ATS PART NUMBER

149A7148-23ATSMRO

### OEM PART NUMBER

149A7148-23

### TECHNICAL SPECIFICATIONS

- FAA PMA PQ5315NM, Supplement 85.
- Equivalent in fit, form, and function to OEM assembly

### AIRCRAFT APPLICATION

Boeing 737-700/700C/800/900ER/8/9

# 53: FUSELAGE

## CAPSTRIP – FWD CARGO FLOOR

ATA Chapter: 53-30



### PRODUCT DESCRIPTION

Forward cargo bay floor-to-sidewall capstrips

### ATS PART NUMBER

453A1611-6ATSMRO  
453A1611-9ATSMRO  
453A1611-10ATSMRO  
453A1611-11ATSMRO  
453A1611-12ATSMRO

### OEM PART NUMBER

453A1611-6  
453A1611-9  
453A1611-10  
453A1611-11  
453A1611-12

### TECHNICAL SPECIFICATIONS

- FAA PMA PQ5315NM, Supplement 95
- Equivalent in fit, form and function to OEM part

### AIRCRAFT APPLICATION

#### **453A1611-6ATSMRO:**

Boeing 737-700/800/900/900ER

#### **453A1611-9ATSMRO:**

Boeing 737-600/700/700C/800/900/900ER/  
8/9/8200

#### **453A1611-10ATSMRO:**

Boeing 737-700/700C

#### **453A1611-11ATSMRO:**

Boeing 737-700/700C

#### **453A1611-12ATSMRO:**

Boeing 737-700/700C



# 53: FUSELAGE

## CAPSTRIP

ATA Chapter: 53-30, 25-52



### PRODUCT DESCRIPTION

The Capstrips are located in the Fwd Cargo Compartment and fasten to floor panels and sidewall liners. They function to close out gaps, assisting in fire containment and preventing debris accumulation below the floor panels

### ATS PART NUMBER

453A1611-14ATSMRO  
453A1611-16ATSMRO  
453A1611-17ATSMRO  
453A1611-30ATSMRO  
453A1611-31ATSMRO

### OEM PART NUMBER

453A1611-14  
453A1611-16  
453A1611-17  
453A1611-30  
453A1611-31

### TECHNICAL SPECIFICATIONS

- FAA PMA PQ5315NM, Supplement 99
- Equivalent in fit, form and function to OEM part

### AIRCRAFT APPLICATION

**453A1611-14ATSMRO:**  
Boeing 737-800/900/900ER/8/9

**453A1611-16ATSMRO:**  
Boeing 737-800/8

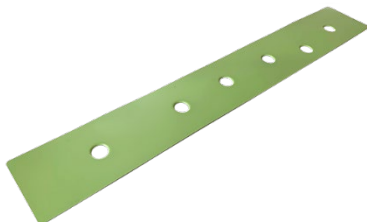
**453A1611-17ATSMRO:**  
Boeing 737-800/8

**453A1611-30ATSMRO:**  
Boeing 737-800/900/900ER/8/9

**453A1611-31ATSMRO:**  
Boeing 737-800/900/900ER/8/9

## WEB - FWD CARGO DOOR SILL

ATA Chapter: 53-30



### PRODUCT DESCRIPTION

Component of Section 43 Door Surround Structure

### ATS PART NUMBER

654A0003-58ATSMRO

### OEM PART NUMBER

654A0003-58

### TECHNICAL SPECIFICATIONS

- FAA PMA PQ5315NM, Supplement 55
- Equivalent in fit, form and function to OEM part
- Current OEM ICA information is applicable to parts

### AIRCRAFT APPLICATION

Boeing 737-600/700/700C/800/900/900ER/8/9

# 53: FUSELAGE

## SEAT TRACK – SECTIONS 43

ATA Chapter: 53-30



### PRODUCT DESCRIPTION

Provides a means of attachment for passenger seats

### ATS PART NUMBER

654A0004-77ATSMRO  
143A5310-54ATSMRO

### OEM PART NUMBER

654A0004-77  
143A5310-54

### TECHNICAL SPECIFICATIONS

- FAA PMA PQ5315NM, Supplement 55
- Equivalent in fit, form and function to OEM part
- Current OEM ICA information is applicable to parts

### AIRCRAFT APPLICATION

Boeing 737-700

## SEAT TRACK – SECTIONS 43

ATA Chapter: 53-30



### PRODUCT DESCRIPTION

Provides a means of attachment for passenger seats

### ATS PART NUMBER

654A0004-776ATSMRO  
143A5310-52ATSMRO  
143A5310-109ATSMRO

### OEM PART NUMBER

654A0004-776, 143A5310-51  
143A5310-52  
143A5310-109

### TECHNICAL SPECIFICATIONS

- FAA PMA PQ5315NM, Supplement 55
- Equivalent in fit, form and function to OEM part
- Current OEM ICA information is applicable to parts

### AIRCRAFT APPLICATION

Boeing 737-700/800/900/900ER/8/9

# 53: FUSELAGE

## RAIL ASSEMBLIES

ATA Chapter: 53-35



### PRODUCT DESCRIPTION

The Rail Assemblies are located in the Forward Cargo Bay and provide support for the STA 500D Bulkhead. In addition, the Rails act as a fire barrier and close out the cargo bay from the wingbox

### ATS PART NUMBER

143A9485U30ATSMRO  
143A9485U34ATSMRO  
143A9485U35ATSMRO

### OEM PART NUMBER

143A9485U30  
143A9485U34  
143A9485U35

### TECHNICAL SPECIFICATIONS

- FAA PMA PQ5315NM, Supplement 86
- Equivalent in fit, form and function to OEM part

### AIRCRAFT APPLICATION

#### 143A9485U30ATSMRO:

Boeing 737-600/700/700C

#### 143A9485U34ATSMRO &

#### 143A9485U35ATSMRO:

Boeing 737-600/700/700C/800/900/900ER/8/9



## SEAT TRACK – SECTIONS 44

ATA Chapter: 53-40



### PRODUCT DESCRIPTION

Provides a means of attachment for passenger seats

### ATS PART NUMBER

144A5350-1ATSMRO  
144A5350-3ATSMRO

### OEM PART NUMBER

144A5350-1  
144A5350-3

### TECHNICAL SPECIFICATIONS

- FAA PMA PQ5315NM, Supplement 47
- Equivalent in fit, form and function to OEM part
- Current OEM ICA information is applicable to parts

### AIRCRAFT APPLICATION

#### 144A5350-1ATSMRO:

Boeing 737-600/700/700C/800/900/900ER/8/9

#### 144A5350-3ATSMRO:

Boeing 737-600/700



Trusted Partners  
Supporting Flight

# 53: FUSELAGE

## ISOLATOR - SIDEWALL

ATA Chapter: 53-40

144A9451-3ATSMRO



144A9451-4ATSMRO



144A9451-5ATSMRO



### PRODUCT DESCRIPTION

Isolators function as an attachment point for the sidewall panels.

### ATS PART NUMBER

144A9451U3ATSMRO  
144A9451U4ATSMRO  
144A9451U5ATSMRO

### OEM PART NUMBER

144A9451-3, 144A9451Y3, 144A9451U3  
144A9451-4, 144A9451Y4, 144A9451U4  
144A9451-5, 144A9451Y5, 144A9451U5

### TECHNICAL SPECIFICATIONS

- FAA PMA PQ5315NM, Supplement 51
- Equivalent in fit, form and function to OEM part
- Current OEM ICA information is applicable to parts

### AIRCRAFT APPLICATION

Boeing 737-600/700/700C/800/900/900ER/8/9

## FRAME – ECS SUPPORT

ATA Chapter: 53-40



### PRODUCT DESCRIPTION

ECS Support Frame supports the RAM Air Exhaust Duct Panel just aft of the main LH and RH ECS bay doors

### ATS PART NUMBER

149A7214-19ATSMRO

### OEM PART NUMBER

149A7214-19

### TECHNICAL SPECIFICATIONS

- FAA PMA PQ5315NM, Supplement 58
- Equivalent in fit, form and function to OEM part
- 149A7214-20ATSMRO opposite to 149A7214-19ATSMRO

### AIRCRAFT APPLICATION

Boeing 737-700/700C/800/900ER

# 53: FUSELAGE

## FRAME – ECS SUPPORT

ATA Chapter: 53-40



### PRODUCT DESCRIPTION

ECS Support Frame supports the RAM Air Exhaust Duct Panel just aft of the main LH and RH ECS bay doors

### ATS PART NUMBER

149A7214-20ATSMRO

### OEM PART NUMBER

149A7214-20

### TECHNICAL SPECIFICATIONS

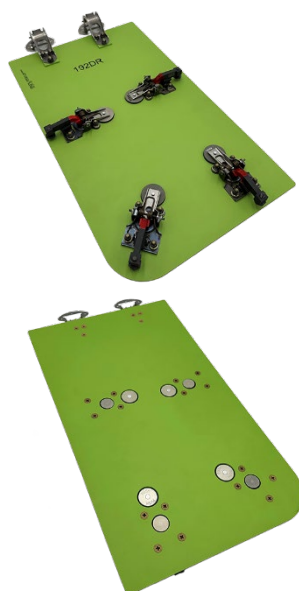
- FAA PMA PQ5315NM, Supplement 58
- Equivalent in fit, form and function to OEM part
- 149A7214-20ATSMRO opposite to 149A7214-19ATSMRO

### AIRCRAFT APPLICATION

Boeing 737-700/700C/800/900ER

## DOOR ASSEMBLY – HIGH PRESSURE AIR CONNECT

ATA Chapter: 53-40, 52-48



### PRODUCT DESCRIPTION

Located at STA 540, RBL 14, the Door Assy is a component of the lower wing-to-body fairing skin panel. During maintenance it gives access to connect an external source of compressed air to the Pneumatic Manifold

### ATS PART NUMBER

149A7241-9ATSMRO

### OEM PART NUMBER

149A7241-9

### TECHNICAL SPECIFICATIONS

- FAA PMA PQ5315NM, Supplement 96
- Equivalent in fit, form and function to OEM part

### AIRCRAFT APPLICATION

Boeing 737-700/700C/800/900ER/8/9/8200

# 53: FUSELAGE

## TIE DOWN ASSEMBLY – LH FWD ENTRY DOOR

ATA Chapter: 53-42, 25-66



141A5220-2ATSMRO, STA 312



141A5220-4ATSMRO, STA 344

### PRODUCT DESCRIPTION

Attached to the floor structure located at the LH Fwd Entry Door to secure the Escape Slide during emergency evacuation

### ATS PART NUMBER

141A5220-2ATSMRO  
141A5220-4ATSMRO

### OEM PART NUMBER

141A5220-2  
141A5220-4

### TECHNICAL SPECIFICATIONS

- FAA PMA PQ5315NM, Supplement 53
- Equivalent in fit, form and function to OEM part
- Current OEM ICA information is applicable to parts

### AIRCRAFT APPLICATION

#### 141A5220-2ATSMRO:

Boeing 737-600/700/700C/800/900/900ER/8/9

#### 141A5220-4ATSMRO:

Boeing 737-600/700/800/900/900ER/8/9

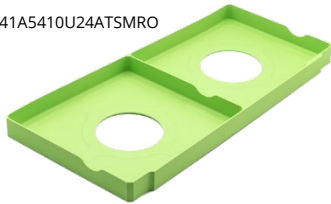


# 53: FUSELAGE

## INTERCOSTAL – FLOOR STABILIZER

ATA Chapter: 53-42

141A5410U24ATSMRO



### PRODUCT DESCRIPTION

Support the floor panels

### ATS PART NUMBER

141A5410U24ATSMRO  
141A5410U25ATSMRO  
141A5410U146ATSMRO  
141A5410U148ATSMRO  
141A5410U150ATSMRO

### OEM PART NUMBER

141A5410U24  
141A5410U25  
141A5410U146  
141A5410U148  
141A5410U150

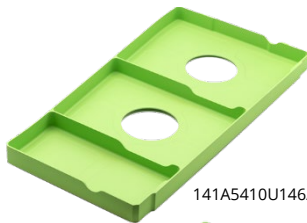
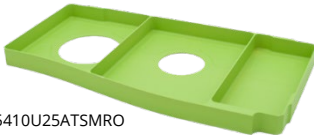
### TECHNICAL SPECIFICATIONS

- FAA PMA PQ5315NM, Supplement 43
- Equivalent in fit, form and function to OEM parts
- Current OEM ICA information is applicable to parts

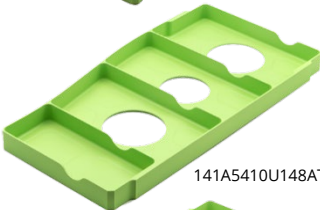
### AIRCRAFT APPLICATION

Boeing 737-600/700/800/900/900ER/8/9

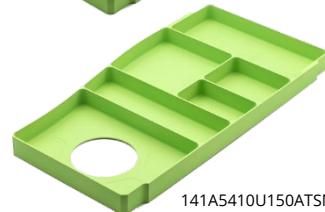
141A5410U25ATSMRO



141A5410U146ATSMRO



141A5410U148ATSMRO



141A5410U150ATSMRO

## INTERCOSTAL – FLOOR STABILIZER

ATA Chapter: 53-42



141A5410U140ATSMRO

### PRODUCT DESCRIPTION

Support the floor panels

### ATS PART NUMBER

141A5410U140ATSMRO  
141A5410U149ATSMRO

### OEM PART NUMBER

141A5410-12, 141A5410-140, 141A5410Y140,  
141A5410U140  
141A5410-17, 141A5410-149, 141A5410Y149,  
141A5410U149

### TECHNICAL SPECIFICATIONS

- FAA PMA PQ5315NM, Supplement 52
- Equivalent in fit, form and function to OEM parts
- Current OEM ICA information is applicable to parts

### AIRCRAFT APPLICATION

#### 141A5410U140ATSMRO:

Boeing 737-600/700/700C/800/900/900ER/8/9

#### 141A5410U149ATSMRO:

Boeing 737-600/700/800/900/900ER/8/9



141A5410U149ATSMRO



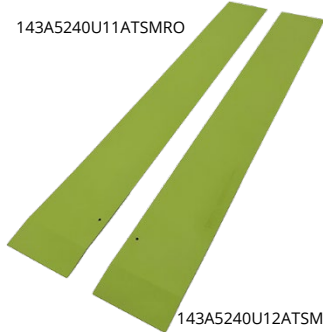
Trusted Partners  
Supporting Flight

# 53: FUSELAGE

## PLATE AND PANEL

ATA Chapter: 53-42

143A5240U11ATSMRO



143A5240U12ATSMRO

143A5240U33ATSMRO



143A5240U34ATSMRO

### PRODUCT DESCRIPTION

The **Plate** and **Panel** are located at STA 537.45 and are a component of the Panel Break Assy, which supports floor panels in the passenger cabin

### ATS PART NUMBER

#### Plate

143A5240U11ATSMRO  
143A5240U12ATSMRO

#### Panel

143A5240U33ATSMRO  
143A5240U34ATSMRO

### OEM PART NUMBER

#### Plate

143A5240U11  
143A5240U12

#### Panel

143A5240U33  
143A5240U34

### TECHNICAL SPECIFICATIONS

- FAA PMA PQ5315NM, Supplement 116
- Equivalent in fit, form and function to OEM part

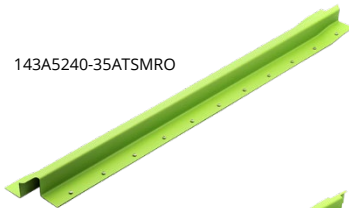
### AIRCRAFT APPLICATION

Boeing 737-600/700/800/900/900ER/8/9

## FLOOR PANEL BREAK ASSEMBLY

ATA Chapter: 53-42

143A5240-35ATSMRO



143A5240-36ATSMRO

### PRODUCT DESCRIPTION

Provides support for floor panels located in the passenger cabin. PMA offering addresses operator-reported service difficulties for cracked OEM parts

### ATS PART NUMBER

143A5240-35ATSMRO  
143A5240-36ATSMRO

### OEM PART NUMBER

143A5240-35  
143A5240-36

### TECHNICAL SPECIFICATIONS

- FAA PMA PQ5315NM, Supplement 38
- Equivalent in fit, form and function to OEM assembly
- Provided un-drilled to facilitate back-drilling
- Formed Aluminum Sheet
- Chemical conversion coating and corrosion-inhibiting primer applied
- 143A5240-35ATSMRO installs left
- 143A5240-36ATSMRO installs right

### AIRCRAFT APPLICATION

Boeing 737-600/700/800/900/900ER/8/9

# 53: FUSELAGE

## FITTING – WATER TANK

ATA Chapter: 53-42, 38-11



### PRODUCT DESCRIPTION

The Water Tank Fitting is a component of the Water/Waste Tank Enclosure in the Aft Cargo Compartment. It provides attach points for longitudinal angles, which in turn support the Water/Waste Tank Enclosure/Lining.

### ATS PART NUMBER

143A8113U6ATSMRO

### OEM PART NUMBER

143A8113U6

### TECHNICAL SPECIFICATIONS

- FAA PMA PQ5315NM, Supplement 108
- Equivalent in fit, form and function to OEM part

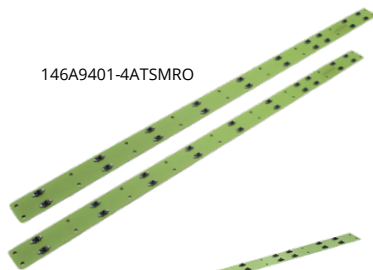
### AIRCRAFT APPLICATION

Boeing 737-700/800/8

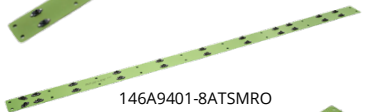
## TEE ASSEMBLY

ATA Chapter: 53-42

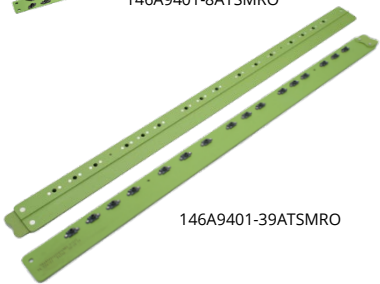
146A9401-4ATSMRO



146A9401-8ATSMRO



146A9401-39ATSMRO



### PRODUCT DESCRIPTION

Provides a connection point and support for the aft cargo floor

### ATS PART NUMBER

146A9401-4ATSMRO

146A9401-8ATSMRO

146A9401U39ATSMRO

### OEM PART NUMBER

146A9401-4

146A9401-8

146A9401-39, 146A9401Y39, 146A9401U39

### TECHNICAL SPECIFICATIONS

- FAA PMA PQ5315NM, Supplement 45
- Equivalent in fit, form and function to OEM assembly
- Current OEM ICA information is applicable to parts

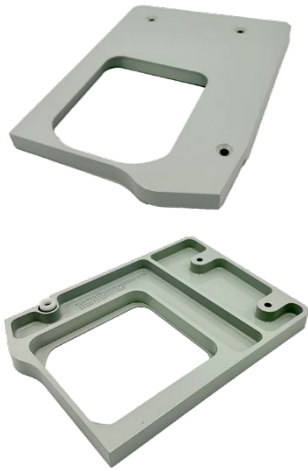
### AIRCRAFT APPLICATION

Boeing 737-600/700/700C/800/900/900ER/8/9

# 53: FUSELAGE

## PLATE ASSY - AFT PAX DOOR

ATA Chapter: 53-46



### PRODUCT DESCRIPTION

The Plate Assy is located at the AFT Passenger Door and functions as a cover plate for the Girt Bar Fitting, closing out gaps between the Girt Bar Fitting, door frame, and adjacent floor panels

### ATS PART NUMBER

D5348015900600ATSPMA

### OEM PART NUMBER

D5348015900600

### TECHNICAL SPECIFICATIONS

- FAA PMA PQ5315NM, Supplement 113
- Equivalent in fit, form and function to OEM part

### AIRCRAFT APPLICATION

Airbus A319-100/A320-200/A321-200

## DOOR ASSEMBLY - FWD FAIRING ACCESS

ATA Chapter: 53-51, 52-49, 53-30



### PRODUCT DESCRIPTION

The Door Assembly is located between STA 520 and STA 540 on the belly of the aircraft, and provides access to the ground conditioned air connector

### ATS PART NUMBER

149A7148-23ATSMRO

### OEM PART NUMBER

149A7148-23

### TECHNICAL SPECIFICATIONS

- FAA PMA PQ5315NM, Supplement 85.
- Equivalent in fit, form, and function to OEM assembly

### AIRCRAFT APPLICATION

Boeing 737-700/700C/800/900ER/8/9

## BRACKETS - DOOR ACTUATOR

ATA Chapter: 53-51



### PRODUCT DESCRIPTION

Located on the wing-to-body fairing, the Bracket functions as a door actuator for the flap track cutout door. The flap track carriage engages the Bracket when the flap retracts, and the seal plate door opens

### ATS PART NUMBER

149A7322U19ATSMRO

149A7322U20ATSMRO

### OEM PART NUMBER

149A7322U19

149A7322U20

### TECHNICAL SPECIFICATIONS

- FAA PMA PQ5315NM, Supplement 97
- Equivalent in fit, form and function to OEM part

### AIRCRAFT APPLICATION

Boeing 737-700/800/900ER/8/9/8200

# 53: FUSELAGE

## ZEE ASSY – CARGO FLOOR, SECTION 46

ATA Chapter: 53-60



### PRODUCT DESCRIPTION

The PMA article is located at RBL 21.0, spanning the STA 867 to STA 887 frames in Section 46 of the Aft Cargo Compartment. It provides support and a means of retention for the RH sidewall liners and floor panels

### ATS PART NUMBER

146A7502-56ATSMRO

### OEM PART NUMBER

146A7502-56

### TECHNICAL SPECIFICATIONS

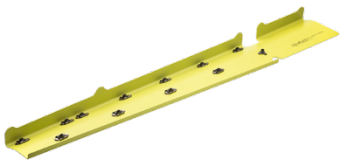
- FAA PMA PQ5315NM, Supplement 105
- Equivalent in fit, form and function to OEM part

### AIRCRAFT APPLICATION

Boeing 737-600/700/700C/800/900/900ER/  
8/9/8200

## AFT CARGO PIT SHIELD

ATA Chapter: 53-60



### PRODUCT DESCRIPTION

Provides attach points for aft cargo bay sidewall and floor panels

### ATS PART NUMBER

146A8127U1ATSMRO

### OEM PART NUMBER

146A8127U1

### TECHNICAL SPECIFICATIONS

- FAA PMA PQ5315NM, Supplement 21
- Equivalent in fit, form and function to OEM assembly
- Two coats of primer for improved corrosion resistance
- 146A8127U1ATSMRO installs forward of the aft cargo bay door

### AIRCRAFT APPLICATION

Boeing 737-600/700/700C/800/900

## AFT CARGO PIT SHIELD

ATA Chapter: 53-60



### PRODUCT DESCRIPTION

Provides attach points for sidewall and floor panels in the aft cargo compartment

### ATS PART NUMBER

146A8127U12ATSMRO

### OEM PART NUMBER

146A8127U12

### TECHNICAL SPECIFICATIONS

- FAA PMA PQ5315NM, Supplement 21
- Equivalent in fit, form and function to OEM assembly
- Two coats of primer for improved corrosion resistance
- 146A8127U12ATSMRO installs forward of the aft cargo bay door

### AIRCRAFT APPLICATION

Boeing 737-600/700/800/900/900ER

# 53: FUSELAGE

## AFT CARGO PIT SHIELD

ATA Chapter: 53-60



### PRODUCT DESCRIPTION

Provides attach points for sidewall and floor panels in the aft cargo compartment

### ATS PART NUMBER

146A8127Y10ATSMRO

### OEM PART NUMBER

146A8127Y10

### TECHNICAL SPECIFICATIONS

- FAA PMA PQ5315NM, Supplement 21
- Equivalent in fit, form and function to OEM assembly
- Two coats of primer for improved corrosion resistance
- 146A8127Y10ATSMRO installs aft of the aft cargo bay door

### AIRCRAFT APPLICATION

Boeing 737-600/700/800/900/900ER

## SCUFF PLATE - FORWARD CARGO DOOR

ATA Chapter: 53-60



### PRODUCT DESCRIPTION

Components of the cargo doorway lower main sill. Primarily designed to resist impact damage from cargo and protect underlying structure from environmental effects

### ATS PART NUMBER

146A8342-7ATSMRO

### OEM PART NUMBER

146A8342-7

### TECHNICAL SPECIFICATIONS

- FAA PMA PQ5315NM, Supplement 75.
- Equivalent in fit, form and function to OEM.
- Material: Titanium

### AIRCRAFT APPLICATION

Boeing 737-600/700/700C/800/900/900ER/8/9



# 53: FUSELAGE

## CAPSTRIP

ATA Chapter: 53-60, 25-52

453A2611-4ATSMRO 453A2611-8ATSMRO



### PRODUCT DESCRIPTION

The Capstrips are located in the Aft Cargo Compartment and fasten to floor panels, bulkhead liners, and sidewall liners. They function to close out gaps, assisting in fire containment and preventing debris accumulation below the floor panels

### ATS PART NUMBER

453A2611-4ATSMRO  
453A2611-8ATSMRO  
453A2611-9ATSMRO  
453A2611-24ATSMRO

### OEM PART NUMBER

453A2611-4  
453A2611-8  
453A2611-9  
453A2611-24

### TECHNICAL SPECIFICATIONS

- FAA PMA PQ5315NM, Supplement 100
- Equivalent in fit, form and function to OEM part

### AIRCRAFT APPLICATION

#### 453A2611-4ATSMRO:

Boeing 737-600/700/700C/800/900/900ER/  
8/9/8200

#### 453A2611-8ATSMRO:

Boeing 737-700/700C

#### 453A2611-9ATSMRO:

Boeing 737-700/700C

#### 453A2611-24ATSMRO:

Boeing 737-600/700/700C/800/900/900ER



# 53: FUSELAGE

## CAPSTRIP - ASSY

ATA Chapter: 25-52, 53-60

### PRODUCT DESCRIPTION

The Capstrips are located in the Aft Cargo Compartment and fasten to floor panels, bulkhead liners, and sidewall liners. They function to close out gaps, assisting in fire containment and preventing debris accumulation below the floor panels

### TECHNICAL SPECIFICATIONS

- FAA PMA PQ5315NM, Supplement 107
- Equivalent in fit, form and function to OEM part

### AIRCRAFT APPLICATION

#### **453A2611-27ATSMRO &**

#### **453A2611Y3ATSMRO:**

Boeing 737-600/700/700C/800/900/  
900ER/8/9

#### **453A2611-13ATSMRO:**

Boeing 737-700/700C/800/900/900ER/8/9

### ATS PART NUMBER

453A2611-27ATSMRO  
453A2611 Y3ATSMRO  
453A2611-13ATSMRO

### OEM PART NUMBER

453A2611-27  
453A2611 Y3  
453A2611-13

453A2611-27ATSMRO

453A2611Y3ATSMRO

453A2611-13ATSMRO

# 53: FUSELAGE

## CHORD

ATA Chapter: 53-70



### PRODUCT DESCRIPTION

The Chord is a component of the Section 47 floor structure, spanning the STA 927 to STA 947.5 floor beams at LBL 0.54. It functions to both stabilize the floor structure and support the cabin floor panel

### ATS PART NUMBER

147A5430U1ATSMRO

### OEM PART NUMBER

147A5430U1

### TECHNICAL SPECIFICATIONS

- FAA PMA PQ5315NM, Supplement 94
- Equivalent in fit, form and function to OEM part

### AIRCRAFT APPLICATION

Boeing 737-600/700/800/900ER/8/9/8200

## INTERCOSTAL ASSY – SECTION 47

ATA Chapter: 53-70



### PRODUCT DESCRIPTION

The PMA article is located at RBL 3.0, spanning the STA 927 to STA 947 frames in Section 47 of the Aft Cargo Compartment. It provides stiffness to the adjacent structure and provides attachment locations/support for the upper rail, which in turn supports the cargo compartment floor panels

### ATS PART NUMBER

147A7500U6ATSMRO

### OEM PART NUMBER

147A7500U6

### TECHNICAL SPECIFICATIONS

- FAA PMA PQ5315NM, Supplement 105
- Equivalent in fit, form and function to OEM part

### AIRCRAFT APPLICATION

Boeing 737- 600/700/700C/800/900/900ER/8/9/8200

## CARGO TRACK ASSEMBLY – SECTION 47, DECK SUPPORT

ATA Chapter: 53-70



### PRODUCT DESCRIPTION

Supports cargo floor panels, provides floor support for payloads, and incorporates tie down attach points to prevent cargo from shifting.

### ATS PART NUMBER

147A7501-13ATSMRO

147A7501-14ATSMRO

### OEM PART NUMBER

147A7501-13

147A7501-14

### TECHNICAL SPECIFICATIONS

- FAA PMA PQ5315NM, Supplement 79
- Equivalent in fit, form and function to OEM assembly

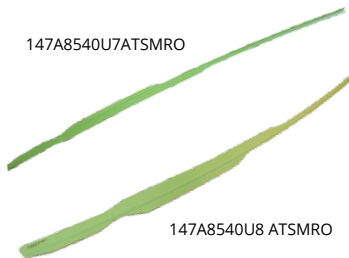
### AIRCRAFT APPLICATION

Boeing 737-600/700/700C/800/900/900ER/8/9

# 53: FUSELAGE

## INNER CHORD LH/RH OF AFT DOORS

ATA Chapter: 53-70



### PRODUCT DESCRIPTION

Formed stiffeners installed at threshold of Section 47 aft doors and are part of the door surround structure

### ATS PART NUMBER

147A8540U7ATSMRO  
147A8540U8ATSMRO

### OEM PART NUMBER

147A8540U7  
147A8540U8

### TECHNICAL SPECIFICATIONS

- FAA PMA PQ5315NM, Supplement 23
- Equivalent in fit, form and function to OEM assembly
- Current OEM ICA information is applicable to parts
- Provided as undrilled parts for match-drilling on the aircraft

### AIRCRAFT APPLICATION

Boeing 737-600/700/800/900/8

## BRACKET ASSEMBLY – AFT CARGO COMPARTMENT

ATA Chapter: 53-70, 25-52



### PRODUCT DESCRIPTION

Attachment point for Aft Cargo Compartment Bulkhead removable panel

### ATS PART NUMBER

149A8118U29ATSMRO

### OEM PART NUMBER

149A8118U29

### TECHNICAL SPECIFICATIONS

- FAA PMA PQ5315NM, Supplement 52
- Equivalent in fit, form and function to OEM part
- Current OEM ICA information is applicable to parts

### AIRCRAFT APPLICATION

Boeing 737-600/700/700C/800/900/900ER/8/9

## CLOSURE ANGLE – SECTION 48

ATA Chapter: 53-80



### PRODUCT DESCRIPTION

Closure Angles function as closeouts between the vertical stabilizer and fuselage skin

### ATS PART NUMBER

148A8310U3ATSMRO  
148A8310U4ATSMRO

### OEM PART NUMBER

148A8310-3  
148A8310-4

### TECHNICAL SPECIFICATIONS

- FAA PMA PQ5315NM, Supplement 55
- Equivalent in fit, form and function to OEM part
- Current OEM ICA information is applicable to parts

### AIRCRAFT APPLICATION

Boeing 737-600/700/700C/800/900

# 53: FUSELAGE

## CLOSURE ANGLE – SECTION 48

## ATA Chapter: 53-80



### PRODUCT DESCRIPTION

Provides a closeout interface between the fuselage crown skin and vertical stabilizer

### ATS PART NUMBER

148A8310U7ATSMRO  
148A8310U8ATSMRO

### OEM PART NUMBER

148A8310-7, 148A8310U7  
148A8310-8, 148A8310U8

### TECHNICAL SPECIFICATIONS

- FAA PMA PQ5315NM, Supplement 61
- Equivalent in fit, form and function to OEM part
- 148A8310U8ATSMRO opposite to 148A8310U7ATSMRO

### AIRCRAFT APPLICATION

Boeing 737-700/800