

# ATS

---

## PMA and STC PRODUCT CATALOG WINTER 2025

Distribution through Ranger Air Aviation:  
+1 972 245 6699 or [sales@rangeraav.com](mailto:sales@rangeraav.com)

# TABLE OF CONTENTS

ATA Chapter	Chapter Name	Pages
21	AIR CONDITIONING/PRESSURIZATION	21-1
25	EQUIPMENT / FURNISHINGS	25-1 thru 25-14
26	FIRE PROTECTION	26-1
27	FLIGHT CONTROLS	27-1 thru 27-13
28	FUEL	28-1
29	HYDRAULIC POWER	29-1 thru 29-5
30	ICE AND RAIN PROTECTION	30-1
32	LANDING GEAR	32-1 thru 32-2
33	LIGHTS	33-1
34	NAVIGATION	34-1
36	PNEUMATIC	36-1
38	WATER / WASTE	38-1
50	CARGO & ACCESSORY COMPARTMENTS	50-1
51	STANDARD PRACTICES AND STRUCTURES	51-1
52	DOORS	52-1 thru 52-7
53	FUSELAGE	53-1 thru 53-29
54	NACELLES / PYLONS	54-1
55	STABILIZERS	55-1
57	WINGS	57-1 thru 57-9
71	POWER PLANT	71-1 thru 71-3
75	BLEED AIR	75-1
78	EXHAUST	78-1

# 21: AIR CONDITIONING/PRESSURIZATION

## ARM ASSY – RAM AIR INLET

ATA Chapter: 21-51



### PRODUCT DESCRIPTION

Linkage component for deployment of ram air inlet deflector door and ram air inlet modulation panel

### ATS PART NUMBER

213A3160-5ATSMRO  
213A3160-6ATSMRO  
213A3160-8ATSMRO

### OEM PART NUMBER

213A3160-5  
213A3160-6  
213A3160-8

### TECHNICAL SPECIFICATIONS

- FAA PMA PQ5315NM, Supplement 95
- Equivalent in fit, form and function to OEM part

### AIRCRAFT APPLICATION

Boeing 737-600/700/700C/800/900/900ER/  
8/9/8200

## SUPPORT ASSY – RAM AIR INLET

ATA Chapter: 21-51



### PRODUCT DESCRIPTION

Located on the wing-to-body fairing, the Support Assys are a component of the Ram Air Inlet System, and assist in ensuring the operation of the Ram Air Inlet Deflector Door and Ram Air Inlet Modulation Panels

### ATS PART NUMBER

213A3150U1ATSMRO  
213A3150Y2ATSMRO  
213A3150-3ATSMRO  
213A3150-4ATSMRO

### OEM PART NUMBER

213A3150-1/213A3150U1  
213A3150-2/213A3150Y2  
213A3150-3  
213A3150-4

### TECHNICAL SPECIFICATIONS

- FAA PMA PQ5315NM, Supplement 96
- Equivalent in fit, form and function to OEM part

### AIRCRAFT APPLICATION

Boeing 737-600/700/700C/800/900/900ER/  
8/9/8200

© 2023 Aviation Technical Services – 9/2023

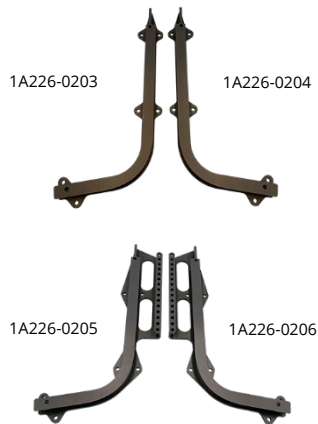


Trusted Partners  
Supporting Flight

# 25: EQUIPMENT / FURNISHINGS

## FLIGHT DECK SEAT TRACKS

ATA Chapter: 25-11, 53-10



### PRODUCT DESCRIPTION

Shorter lead time and less cost replacement parts for flight deck seat tracks as compared to OEM components

### ATS PART NUMBER

1A226-0201ATSMRO / 1A226-0202ATSMRO  
1A226-0203ATSMRO / 1A226-0204ATSMRO  
1A226-0205ATSMRO / 1A226-0206ATSMRO  
1A296-0339ATSMRO / 1A296-0340ATSMRO

### OEM PART NUMBER

1A226-0201 / 1A226-0202  
1A226-0203 / 1A226-0204  
1A226-0205 / 1A226-0206  
1A296-0339 / 1A296-0340

### TECHNICAL SPECIFICATIONS

- FAA PMA PQ5315NM, Supplement 59
- Equivalent in fit, form and function to OEM

### AIRCRAFT APPLICATION

Boeing 737-600/700/700C/800/900/900ER/8/9

## AIR OUTLET

ATA Chapter: 25-11



### PRODUCT DESCRIPTION

Directs air in the cockpit in a downward and aft direction, away from the flight crew

### ATS PART NUMBER

214A1118-12ATSMRO

### OEM PART NUMBER

214A1118-12

### TECHNICAL SPECIFICATIONS

- FAA PMA PQ5315NM, Supplement 78
- Equivalent in fit, form and function to OEM assembly

### AIRCRAFT APPLICATION

Boeing 737-600/700/700C/800/900/900ER/8

## AIR OUTLET

ATA Chapter: 25-11



### PRODUCT DESCRIPTION

Air Outlet is designed to direct air into the cockpit in the downward and aft direction, away from flight crew

### ATS PART NUMBER

214A1118-13ATSMRO

### OEM PART NUMBER

214A1118-13

### TECHNICAL SPECIFICATIONS

- FAA PMA PQ5315NM, Supplement 78
- Equivalent in fit, form and function to OEM assembly

### AIRCRAFT APPLICATION

Boeing 737-600/-700/-800/-900/-900ER/8/9



# 25: EQUIPMENT / FURNISHINGS

## BRACKET – FIRST OBSERVER SEAT

ATA Chapter: 25-11



### PRODUCT DESCRIPTION

Located on the First Observer seat support installation, the bracket retains a magnet that assists in retaining the support assembly

### ATS PART NUMBER

232A3504-28ATSMRO

### OEM PART NUMBER

232A3504-28

### TECHNICAL SPECIFICATIONS

- FAA PMA PQ5315NM, Supplement 97
- Equivalent in fit, form and function to OEM part

### AIRCRAFT APPLICATION

Boeing 737-600/700/700C/800/900/900ER/8/9/8200

## BRACKET ASSEMBLY

ATA Chapter: 25-11



### PRODUCT DESCRIPTION

Pilot/first officer flight kit bag restraint bracket

### ATS PART NUMBER

232A4398-2ATSMRO

### OEM PART NUMBER

232A4398-2

### TECHNICAL SPECIFICATIONS

- FAA PMA PQ5315NM, Supplement 46
- Equivalent in fit, form and function to OEM assembly

### AIRCRAFT APPLICATION

Boeing 737-600/700/700C/800/900/900ER/8/9

## PAD – FLIGHT DECK, FORWARD PANEL

ATA Chapter: 25-16



### PRODUCT DESCRIPTION

Component of Flight Deck Console. Primarily act as wear surface for the pilot and first officer to rest their feet

### ATS PART NUMBER

233A2374-1ATSMRO

233A2374-2ATSMRO

### OEM PART NUMBER

233A2374-1

233A2374-2

### TECHNICAL SPECIFICATIONS

- FAA PMA PQ5315NM, Supplement 71
- Equivalent in fit, form and function to OEM
- Material: 0.125" thick Foam

### AIRCRAFT APPLICATION

Boeing 737-600/700/700C/800/900/900ER

# 25: EQUIPMENT / FURNISHINGS

## DOUBLER - STOW BIN TORQUE TUBE COVER

ATA Chapter: 25-24, 25-28



### PRODUCT DESCRIPTION

Installed on overhead stowage bins throughout airplanes with Boeing Sky Interior. The aluminum Doublers are installed, to prevent further damage, over the top of existing damaged torque tube covers where exposed composite fibers or failure of the cover is found

### ATS PART NUMBER

412A7220-191GATSMRO  
412A7220-192GATSMRO

### OEM PART NUMBER

412A7220-191G  
412A7220-192G

### TECHNICAL SPECIFICATIONS

- FAA PMA PQ5315NM, Supplement 78.
- Equivalent in fit, form and function to OEM.
- Material: Aluminum Alloy

### AIRCRAFT APPLICATION

Boeing 737-700/800/900ER/8/9

## GALLEY RETAINER ASSEMBLIES

ATA Chapter: 25-31



### PRODUCT DESCRIPTION

Fastens galley cabinet doors closed. Limited to 90° rotation

### ATS PART NUMBER

2034100-3ATSMRO  
2034100-4ATSMRO  
984121-1-15ATSMRO

### OEM PART NUMBER

2034100-3 L/H Quarter Turn Retainer  
2034100-4 R/H Quarter Turn Retainer  
984121-1-15

### TECHNICAL SPECIFICATIONS

- FAA PMA PQ5315NM, Supplement 21 and 23
- Equivalent in fit, form and function to OEM assembly

### AIRCRAFT APPLICATION

Boeing 737-700/800

## GALLEY GUIDE ASSEMBLIES

ATA Chapter: 25-31



### PRODUCT DESCRIPTION

Allows doors to open and slide into G3 and G4 Galley assemblies

### ATS PART NUMBER

934023-1ATSMRO  
934023-2ATSMRO

### OEM PART NUMBER

934023-1  
934023-2

### TECHNICAL SPECIFICATIONS

- FAA PMA PQ5315NM, Supplement 21
- Equivalent in fit, form and function to OEM assembly
- Improved track and wheel to reduce wear

### AIRCRAFT APPLICATION

Boeing 737-700

# 25: EQUIPMENT / FURNISHINGS

## MAT – FWD LAVATORY

ATA Chapter: 25-40



1L400107-29BATSMRO



1L400107-119ATSMRO

### PRODUCT DESCRIPTION

The Mats are installed in the Lavatory A floor pan. They function to provide a replaceable, slip-resistant, and decorative surface visible to passengers and crew

### ATS PART NUMBER

1L400107-29BATSMRO  
1L400107-119ATSMRO

### OEM PART NUMBER

1L400107-29B  
1L400107-119

### TECHNICAL SPECIFICATIONS

- FAA PMA PQ5315NM, Supplement 106
- Equivalent in fit, form and function to OEM part

### AIRCRAFT APPLICATION

#### 1L400107-29BATSMRO:

Boeing 737-8

#### 1L400107-119ATSMRO:

Boeing 737-800 Series/8

## MAT – AFT LAVATORY

ATA Chapter: 25-40



1L400407-87BATSMRO



1L400407-117ATSMRO

### PRODUCT DESCRIPTION

The PMA articles are installed into the floor pan of the Aft Lavatories D and E. Their function is to provide an aesthetic decorative, slip-resistant, and easily replaceable wear surface

### ATS PART NUMBER

1L400407-87BATSMRO  
1L400407-117ATSMRO

### OEM PART NUMBER

1L400407-87B  
1L400407-117

### TECHNICAL SPECIFICATIONS

- FAA PMA PQ5315NM, Supplement 104
- Equivalent in fit, form and function to OEM part

### AIRCRAFT APPLICATION

#### 1L400407-87BATSMRO:

Boeing 737-8

#### 1L400407-117ATSMRO:

Boeing 737-800/8

## DOUBLER – LAVATORY B

ATA Chapter: 25-40



### PRODUCT DESCRIPTION

The doubler is located on the outer wall of the Lavatory B. It bonds to the fiberglass skin of the lav wall and attaches to the forward outboard attachment block to provide supplemental damage and corrosion protection

### ATS PART NUMBER

C23302-333-101ATSMRO

### OEM PART NUMBER

C23302-333-101

### TECHNICAL SPECIFICATIONS

- FAA PMA PQ5315NM, Supplement 82
- Equivalent in fit, form and function to OEM part

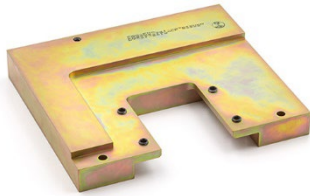
### AIRCRAFT APPLICATION

Boeing 737-600/700/700C

# 25: EQUIPMENT / FURNISHINGS

## ATTACHMENT BLOCK ASSEMBLY – LAVATORY B

ATA Chapter: 25-40



### PRODUCT DESCRIPTION

Part attaches Rumbold Lavatory B module to the interior cabin floor (forward outboard attachment block assembly)

### ATS PART NUMBER

C23302-341-003ATSMRO

### OEM PART NUMBER

C23302-341-003

### TECHNICAL SPECIFICATIONS

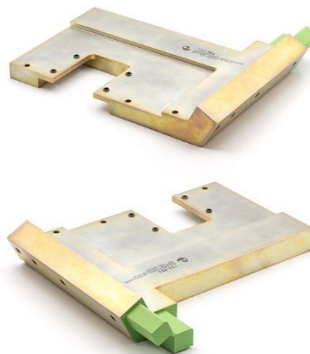
- FAA PMA PQ513NM, Supplement 16
- Manufactured from stainless steel for superior strength and comparable corrosion resistance
- Cadmium plated with a corrosion-inhibiting epoxy primer on all applicable mating surfaces
- Per-lavatory kit option

### AIRCRAFT APPLICATION

Boeing 737-300/500/600/700/700C

## ATTACHMENT BLOCK ASSEMBLY – LAVATORY B

ATA Chapter: 25-40



### PRODUCT DESCRIPTION

Part attaches Rumbold Lavatory B module to the interior cabin floor (forward inboard attachment block assembly)

### ATS PART NUMBER

C23302-351-007ATSMRO

### OEM PART NUMBER

C23302-351-007

### TECHNICAL SPECIFICATIONS

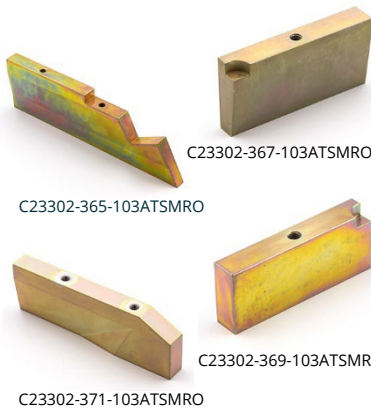
- FAA PMA PQ513NM, Supplement 16
- Manufactured from stainless steel for superior strength and comparable corrosion resistance
- Cadmium plated with a corrosion-inhibiting epoxy primer on all applicable mating surfaces
- Per-lavatory kit option

### AIRCRAFT APPLICATION

Boeing 737-300/500/600/700/700C

## FLOOR PANEL BLOCK ASSEMBLIES – LAVATORY B

ATA Chapter: 25-40



### PRODUCT DESCRIPTION

Part attaches Rumbold Lavatory B module to the interior cabin floor (floor panel block assemblies)

### ATS PART NUMBER

C23302-365-103ATSMRO

C23302-367-103ATSMRO

C23302-369-103ATSMRO

C23302-371-103ATSMRO

### OEM PART NUMBER

C23302-365-103

C23302-367-103

C23302-369-103

C23302-371-103

### TECHNICAL SPECIFICATIONS

- FAA PMA PQ513NM, Supplement 16
- Equivalent in fit, form and function to OEM assembly
- Manufactured from stainless steel for superior strength and comparable corrosion resistance
- Cadmium plated with a corrosion-inhibiting epoxy primer on all applicable mating surfaces
- Per-lavatory kit option

### AIRCRAFT APPLICATION

Boeing 737-300/500/600/700/700C

# 25: EQUIPMENT / FURNISHINGS

## CAPPING – LAV A and LAV B

ATA Chapter: 25-45, 25-46



### PRODUCT DESCRIPTION

The Lav Capping fastens to the Lav A/B wall and acts as both a door frame closeout and a striker plate attachment that accepts the door latch

### ATS PART NUMBER

C22102-264-007ATSMRO  
C22302-655-005ATSMRO

### OEM PART NUMBER

C22102-264-007  
C22302-655-005

### TECHNICAL SPECIFICATIONS

- FAA PMA PQ5315NM, Supplement 94
- Equivalent in fit, form and function to OEM part

### AIRCRAFT APPLICATION

**C22102-264-007ATSMRO:**

Boeing 737-600/700/800

**C22302-655-005ATSMRO:**

Boeing 737-700

## BRACKET ASSEMBLY – AFT CARGO COMPARTMENT

ATA Chapter: 25-52, 53-70



### PRODUCT DESCRIPTION

Attachment point for Aft Cargo Compartment Bulkhead removable panel

### ATS PART NUMBER

149A8118U29ATSMRO

### OEM PART NUMBER

149A8118U29

### TECHNICAL SPECIFICATIONS

- FAA PMA PQ5315NM, Supplement 52
- Equivalent in fit, form and function to OEM part
- Current OEM ICA information is applicable to parts

### AIRCRAFT APPLICATION

Boeing 737-600/700/700C/800/900/900ER/8/9

## SEAL – VERTICAL RIGHT HAND, FORWARD CARGO COMPARTMENT FORWARD BULKHEAD

ATA Chapter: 25-52



### PRODUCT DESCRIPTION

Component of Bulkhead Pressure Relief Panel. Primarily act as closeout seal to mitigate risk of debris and fire exposure to the O2 Cylinder and Battery, along with restricting smoke penetration in the event of a fire

### ATS PART NUMBER

284A6841-28ATSMRO

### OEM PART NUMBER

284A6841-28

### TECHNICAL SPECIFICATIONS

- FAA PMA PQ5315NM, Supplement 67.
- Equivalent in fit, form and function to OEM.
- Material: Silicone Foam Rubber.
- Stock Size: 0.125" x 2.80" x 14.50"

### AIRCRAFT APPLICATION

Boeing 737-600/700/800/900/900ER



# 25: EQUIPMENT / FURNISHINGS

## SEAL – VERTICAL LEFT HAND, FORWARD CARGO COMPARTMENT FORWARD BULKHEAD

ATA Chapter: 25-52



### PRODUCT DESCRIPTION

Component of Bulkhead Pressure Relief Panel. Primarily act as closeout seal to mitigate risk of debris and fire exposure to the O2 Cylinder and Battery, along with restricting smoke penetration in the event of a fire

### ATS PART NUMBER

284A6841-29ATSMRO

### OEM PART NUMBER

284A6841-29

### TECHNICAL SPECIFICATIONS

- FAA PMA PQ5315NM, Supplement 67.
- Equivalent in fit, form and function to OEM.
- Material: Silicone Foam Rubber.
- Stock Size: 0.125" x 2.80" x 14.50"

### AIRCRAFT APPLICATION

Boeing 737-600/700/800/900/900ER

## SEAL – HORIZONTAL, FORWARD CARGO COMPARTMENT FORWARD BULKHEAD

ATA Chapter: 25-52



### PRODUCT DESCRIPTION

Component of Bulkhead Pressure Relief Panel. Primarily act as closeout seal to mitigate risk of debris and fire exposure to the O2 Cylinder and Battery, along with restricting smoke penetration in the event of a fire

### ATS PART NUMBER

284A6841-49ATSMRO

### OEM PART NUMBER

284A6841-49

### TECHNICAL SPECIFICATIONS

- FAA PMA PQ5315NM, Supplement 67.
- Equivalent in fit, form and function to OEM.
- Material: Silicone Foam Rubber.
- Stock Size: 0.125" x 3.80" x 32.90"

### AIRCRAFT APPLICATION

Boeing 737-600/700/800/900/900ER/8/9

# 25: EQUIPMENT / FURNISHINGS

## CAPSTRIP

ATA Chapter: 25-52, 53-30

453A1611-16ATSMRO



453A1611-14ATSMRO

453A1611-17ATSMRO

### PRODUCT DESCRIPTION

The Capstrips are located in the Fwd Cargo Compartment and fasten to floor panels and sidewall liners. They function to close out gaps, assisting in fire containment and preventing debris accumulation below the floor panels

### ATS PART NUMBER

453A1611-14ATSMRO  
453A1611-16ATSMRO  
453A1611-17ATSMRO  
453A1611-30ATSMRO  
453A1611-31ATSMRO

### OEM PART NUMBER

453A1611-14  
453A1611-16  
453A1611-17  
453A1611-30  
453A1611-31

### TECHNICAL SPECIFICATIONS

- FAA PMA PQ5315NM, Supplement 99
- Equivalent in fit, form and function to OEM part

### AIRCRAFT APPLICATION

#### 453A1611-14ATSMRO:

Boeing 737-800/900/900ER/8/9

#### 453A1611-16ATSMRO:

Boeing 737-800/8

#### 453A1611-17ATSMRO:

Boeing 737-800/8

#### 453A1611-30ATSMRO:

Boeing 737-800/900/900ER/8/9

#### 453A1611-31ATSMRO:

Boeing 737-800/900/900ER/8/9



453A1611-30ATSMRO

453A1611-31ATSMRO

# 25: EQUIPMENT / FURNISHINGS

## SHROUD - STA 731 BLKD

ATA Chapter: 25-52



453A2510-1ATSMRO



453A2510-2ATSMRO



453A2510-20ATSMRO

### PRODUCT DESCRIPTION

The Shrouds are components of the aft cargo compartment forward bulkhead. They function to provide protection for the pneumatic ducting and act as a wear surface against any loose items during cargo loading or flight

### ATS PART NUMBER

453A2510-1ATSMRO  
453A2510-2ATSMRO  
453A2510-20ATSMRO

### OEM PART NUMBER

453A2510-1  
453A2510-2  
453A2510-20

### TECHNICAL SPECIFICATIONS

- FAA PMA PQ5315NM, Supplement 106
- Equivalent in fit, form and function to OEM part

### AIRCRAFT APPLICATION

Boeing 737-600Series/700 Series/700C Series/  
800 Series/900 Series/900ER Series/  
8/9/8200

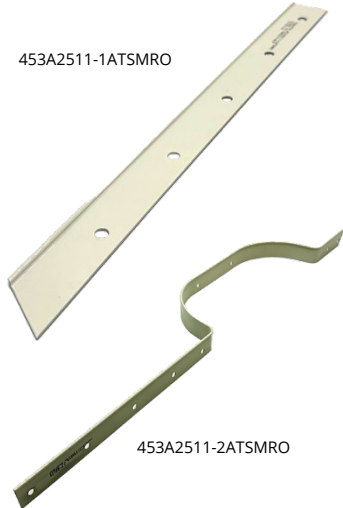


# 25: EQUIPMENT / FURNISHINGS

## CAPSTRIP, AFT CARGO LINER

ATA Chapter: 25-52

453A2511-1ATSMRO



### PRODUCT DESCRIPTION

The PMA articles are components of the Aft Cargo Compartment STA 731 Bulkhead Lining Installation. They install on the vertical flange of the bulkhead liner and function as a closeout, preventing moisture and debris intrusion

### ATS PART NUMBER

453A2511-1ATSMRO  
453A2511-2ATSMRO

### OEM PART NUMBER

453A2511-1  
453A2511-2

### TECHNICAL SPECIFICATIONS

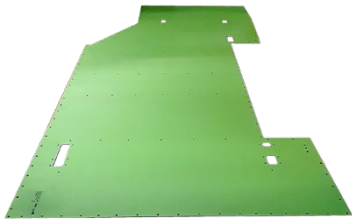
- FAA PMA PQ5315NM, Supplement 105
- Equivalent in fit, form and function to OEM part

### AIRCRAFT APPLICATION

Boeing 737-700/800/8

## AFT CARGO BAY DECK PANEL

ATA Chapter: 25-52



### PRODUCT DESCRIPTION

Replacement for OEM Deck Panel located in Aft Cargo Bay

### ATS PART NUMBER

453A2610-2ATSMRO

### OEM PART NUMBER

453A2610-2

### TECHNICAL SPECIFICATIONS

- FAA PMA PQ5315NM, Supplement 21
- Equivalent in fit, form and function to OEM assembly
- Drilled part to eliminate backshop time for hole details
- Clad aluminum sheet part
- Chemical conversion coating and corrosion-inhibiting primer
- Dimensions: 115.00" (292.10cm) long x 43.70" (110.99cm) wide x 0.08" (0.20cm) thick, 40.6 lbs. (18.4 kg)

### AIRCRAFT APPLICATION

Boeing 737-700

# 25: EQUIPMENT / FURNISHINGS

## CAPSTRIP

ATA Chapter: 25-52, 53-60

453A2611-4ATSMRO



453A2611-8ATSMRO



### PRODUCT DESCRIPTION

The Capstrips are located in the Aft Cargo Compartment and fasten to floor panels, bulkhead liners, and sidewall liners. They function to close out gaps, assisting in fire containment and preventing debris accumulation below the floor panels

### ATS PART NUMBER

453A2611-4ATSMRO  
453A2611-8ATSMRO  
453A2611-9ATSMRO  
453A2611-24ATSMRO

### OEM PART NUMBER

453A2611-4  
453A2611-8  
453A2611-9  
453A2611-24

### TECHNICAL SPECIFICATIONS

- FAA PMA PQ5315NM, Supplement 100
- Equivalent in fit, form and function to OEM part

### AIRCRAFT APPLICATION

#### 453A2611-4ATSMRO:

Boeing 737-600/700/700C/800/900/900ER/  
8/9/8200

#### 453A2611-8ATSMRO:

Boeing 737-700/700C

#### 453A2611-9ATSMRO:

Boeing 737-700/700C

#### 453A2611-24ATSMRO:

Boeing 737-600/700/700C/800/900/900ER

453A2611-9ATSMRO



453A2611-24ATSMRO



# 25: EQUIPMENT / FURNISHINGS

## CAPSTRIP - ASSY

ATA Chapter: 25-52, 53-60

### PRODUCT DESCRIPTION

The Capstrips are located in the Aft Cargo Compartment and fasten to floor panels, bulkhead liners, and sidewall liners. They function to close out gaps, assisting in fire containment and preventing debris accumulation below the floor panels

### ATS PART NUMBER

453A2611-27ATSMRO  
453A2611 Y3ATSMRO  
453A2611-13ATSMRO

### OEM PART NUMBER

453A2611-27  
453A2611 Y3  
453A2611-13

### TECHNICAL SPECIFICATIONS

- FAA PMA PQ5315NM, Supplement 107
- Equivalent in fit, form and function to OEM part

### AIRCRAFT APPLICATION

**453A2611-27ATSMRO &**

**453A2611Y3ATSMRO:**

Boeing 737-600/700/700C/800/900/  
900ER/8/9

**453A2611-13ATSMRO:**

Boeing 737-700/700C/800/900/900ER/8/9

453A2611-27ATSMRO

453A2611Y3ATSMRO

453A2611-13ATSMRO

# 25: EQUIPMENT / FURNISHINGS

## CARGOTEK® CARGO BAY PROTECTION SOLUTIONS

ATA Chapter: 25-52



### PRODUCT DESCRIPTION

Durable, thin floor lining system that adheres to original flooring providing protection. CargoTek® reduces cargo bay maintenance costs and cargo-related gate delays resulting from unexpected discovery of scratches, dents, and cracks on original equipment cargo bays. Complete CargoTek® floor protection solution includes liners for lower, mid, and upper floor panels.

### ATS PART NUMBER

Please contact our sales representative for part number applicability.



### TECHNICAL SPECIFICATIONS

- FAA Certified Design under STC # ST04081NY, PMA Obtained
- Made from impact-resistant Kydex® T
- Water/moisture resistant
- Precision tooled to completely cover pit floor while accommodating all hold-down locations and openings. All fasteners are completely covered by our pit liners
- UL Std 94 V-0 & 5V fire rating, meeting CFR 25.855 requirements

### AIRCRAFT APPLICATION

#### Currently available for:

Airbus: A319-100, A320-200, A320neo, A321-200, A321neo

#### Option for:

Airbus: A321neo w/ Extra Fuel Tanks, A321LR, and A321XLR

## BRACKET ASSEMBLY – FIRST AID KIT

ATA Chapter: 25-64



### PRODUCT DESCRIPTION

The Bracket Assy mounts to Lavatories or Galleys and retains First Aid Kits within the cabin.

### ATS PART NUMBER

416N1014-129ATSMRO

### OEM PART NUMBER

416N1014-129

### TECHNICAL SPECIFICATIONS

- FAA PMA PQ5315NM, Supplement 102
- Equivalent in fit, form and function to OEM part

### AIRCRAFT APPLICATION

Boeing 737-800/8/9

# 25: EQUIPMENT / FURNISHINGS

## TIE DOWN ASSEMBLY – LH FWD ENTRY DOOR

ATA Chapter: 25-66, 53-42



141A5220-2, STA 312



141A5220-4, STA 344

### PRODUCT DESCRIPTION

Attached to the floor structure located at the LH Fwd Entry Door to secure the Escape Slide during emergency evacuation

### ATS PART NUMBER

141A5220-2ATSMRO  
141A5220-4ATSMRO

### OEM PART NUMBER

141A5220-2  
141A5220-4

### TECHNICAL SPECIFICATIONS

- FAA PMA PQ5315NM, Supplement 53
- Equivalent in fit, form and function to OEM part
- Current OEM ICA information is applicable to parts

### AIRCRAFT APPLICATION

#### 141A5220-2ATSMRO:

Boeing 737-600/700/700C/800/900/900ER/8/9

#### 141A5220-4ATSMRO:

Boeing 737-600/700/800/900/900ER/8/9

## BLANKET ASSY – FWD & AFT CARGO DOORS

ATA Chapter: 25-80



411A4907-4189ATSMRO



411A4907-4190ATSMRO

### PRODUCT DESCRIPTION

The Blanket Assy is installed on the interior of the FWD and AFT Cargo Doors and functions to insulate and protect the Cargo Door

### ATS PART NUMBER

411A4907-4189ATSMRO  
411A4907-4190ATSMRO

### OEM PART NUMBER

411A4907-4189  
411A4907-4190

### TECHNICAL SPECIFICATIONS

- FAA PMA PQ5315NM, Supplement 110
- Equivalent in fit, form and function to OEM part

### AIRCRAFT APPLICATION

Boeing 737-700/700C/800/900ER/8/9/8200

# 26: FIRE PROTECTION

## PAN ASSY – SMOKE DETECTOR

ATA Chapter: 26-16



### PRODUCT DESCRIPTION

The PMA article is a component of the Cargo Compartment smoke detection installation. It functions as a recess in the ceiling panel to house the smoke detectors in both the Fwd and Aft Cargo Compartments

### ATS PART NUMBER

218A4020-10ATSMRO

### OEM PART NUMBER

218A4020-10

### TECHNICAL SPECIFICATIONS

- FAA PMA PQ5315NM, Supplement 105
- Equivalent in fit, form and function to OEM part

### AIRCRAFT APPLICATION

Boeing 737-600/700/700C/800/900

© 2024 Aviation Technical Services – 8/2024



Trusted Partners  
Supporting Flight

For more information contact:

[sales@rangeraav.com](mailto:sales@rangeraav.com)

+1 972 245 6699

[ATSmro.com](http://ATSmro.com)

# 27: FLIGHT CONTROLS

## HYDRAULIC FUSE HOUSING

ATA Chapter: 27-32



### PRODUCT DESCRIPTION

Component housing can be installed on separate Flow Rate Fuse assemblies  
Contains parts that make a hydraulic fuse housing

### ATS PART NUMBER

7-1462-1ATS

### OEM PART NUMBER

7-1462-1

### TECHNICAL SPECIFICATIONS

- FAA PMA PQ5315NM, Supplement 3.
- Equivalent in fit, form and function to OEM assembly
- 2-7680 and 2-7681
- 3.76 inches long x 0.93 inches diameter
- Approximate Weight = 0.21 lbs.
- Stainless steel material

### AIRCRAFT APPLICATION

Boeing 737-300/400/500/600/700/700C/800/900/900ER  
Boeing 757-200/200PF/300  
Boeing 767-200/300/300F/400ER  
Boeing 777-200/200LR/300/300ER/F Series

## RETAINER, SEAL – INBD FIXED T/E

ATA Chapter: 27-50, 27-51



### PRODUCT DESCRIPTION

The Seal Retainers accommodate an aerodynamic bulb seal to reduce drag at the wing trailing edge panel transition to inboard flap

### ATS PART NUMBER

115A2752-17ATSMRO  
115A2752-18ATSMRO

### OEM PART NUMBER

115A2752-17  
115A2752-18

### TECHNICAL SPECIFICATIONS

- FAA PMA PQ5315NM, Supplement 89
- Equivalent in fit, form, and function to OEM assembly

### AIRCRAFT APPLICATION

Boeing 737-600/700/700C/800/900/900ER

## SIDEPLATE ASSY – LH & RH INBD T/E

ATA Chapter: 27-51



### PRODUCT DESCRIPTION

The Sideplate Assy is a part of the Wing T/E Flap Drive System. It supports No. 3 (LH) and No. 6 (RH) Fairing and the transmission that powers the jackscrew used to actuate the inboard T/E Flaps.

### ATS PART NUMBER

113A1320-11ATSMRO  
113A1320-12ATSMRO

### OEM PART NUMBER

113A1320-11  
113A1320-12

### TECHNICAL SPECIFICATIONS

- FAA PMA PQ5315NM, Supplement 114
- Equivalent in fit, form and function to OEM part

### AIRCRAFT APPLICATION

Boeing 737-700/800



# 27: FLIGHT CONTROLS

## SIDEPLATE ASSY - LH & RH INBD T/E

ATA Chapter: 27-51



### PRODUCT DESCRIPTION

The Sideplate Assy is a part of the Wing T/E Flap Drive System. It supports No. 3 (LH) and No. 6 (RH) Fairing and the transmission that powers the jackscrew used to actuate the inboard T/E Flaps.

### ATS PART NUMBER

113A1320-13ATSMRO  
113A1320-14ATSMRO

### OEM PART NUMBER

113A1320-13  
113A1320-14

### TECHNICAL SPECIFICATIONS

- FAA PMA PQ5315NM, Supplement 114
- Equivalent in fit, form and function to OEM part

### AIRCRAFT APPLICATION

Boeing 737-700/800

## FITTING SUB-ASSEMBLY

ATA Chapter: 27-51



### PRODUCT DESCRIPTION

Serves as an attach point for the forward fairing section, connecting it to the mechanism on the interior of the fairing.

### ATS PART NUMBER

113A1350-3ATSMRO

### OEM PART NUMBER

113A1350-3

### TECHNICAL SPECIFICATIONS

- FAA PMA PQ5315NM, Supplement 36.
- Equivalent in fit, form and function to OEM assembly
- 6.7 inches long x 3.5-inch-wide x 2.0-inches-deep
- Approximate Weight = 0.45 lbs.
- Aluminum material

### AIRCRAFT APPLICATION

Boeing 737-600/700/700C/800/900/900ER/8/9



# 27: FLIGHT CONTROLS

## ATTACH BEAM ASSEMBLY – POSITIONS #1 and #8

ATA Chapter: 27-51

113A9104-1



113A9104-2



### PRODUCT DESCRIPTION

Component of the Flap Track Fairing Module that serves as an aft attach point to hold the corresponding Flap Track Fairing in place

P/N: 113A9104-1ATSMRO holds #1

P/N: 113A9104-2ATSMRO holds #8

### ATS PART NUMBER

113A9104-1ATSMRO

113A9104-2ATSMRO

### OEM PART NUMBER

113A9104-1

113A9104-2

### TECHNICAL SPECIFICATIONS

- FAA PMA PQ5315NM, Supplement 41
- Equivalent in fit, form and function to OEM assembly
- 13.34-inches-long x 5.14-inches-wide x 2.76-inches-deep
- Approximate Weight = 2.48 lbs.
- Aluminum material

### AIRCRAFT APPLICATION

Boeing 737-600/700/700C/800/900/900ER/8/9

## ATTACH BEAM – POSITIONS #1 and #8

ATA Chapter: 27-51

113A9104-3



113A9104-4



### PRODUCT DESCRIPTION

Component of the Flap Track Fairing Module that serves as an aft attach point to hold the corresponding Flap Track Fairing in place

P/N: 113A9104-3ATSMRO holds #1

P/N: 113A9104-4ATSMRO holds #8

### ATS PART NUMBER

113A9104-3ATSMRO

113A9104-4ATSMRO

### OEM PART NUMBER

113A9104-3

113A9104-4

### TECHNICAL SPECIFICATIONS

- FAA PMA PQ5315NM, Supplement 41
- Equivalent in fit, form and function to OEM assembly
- 13.34-inches-long x 5.14-inches-wide x 2.76-inches-deep
- Approximate Weight = 2.48 lbs.
- Aluminum material

### AIRCRAFT APPLICATION

Boeing 737-600/700/700C/800/900/900ER/8/9



Trusted Partners  
Supporting Flight

# 27: FLIGHT CONTROLS

## ADJUST LINK ASSEMBLY – POSITIONS #1, #2, #7 and #8

ATA Chapter: 27-51



113A9105-5

### PRODUCT DESCRIPTION

Component of the Flap Track Fairing Module that serves as an aft attach point to hold the corresponding Flap Track Fairing in place

P/N: 113A9105-5ATSMRO holds #1 and #8

P/N: 113A9205-5ATSMRO holds #2 and #7

### ATS PART NUMBER

113A9105-5ATSMRO

113A9205-5ATSMRO

### OEM PART NUMBER

113A9105-5

113A9205-5



113A9205-5

### TECHNICAL SPECIFICATIONS

- FAA PMA PQ5315NM, Supplement 42.
- Equivalent in fit, form and function to OEM assembly.

- Aluminum material

#### 113A9105-5ATSMRO:

- 13.45 inches long x 6.77 inches wide x 1.90 inches deep.

- Approximate Weight = 1.45 lbs.

#### 113A9205-5ATSMRO:

- 13.74 inches long x 7.16 inches wide x 1.90 inches deep.

- Approximate Weight = 1.50 lbs.

### AIRCRAFT APPLICATION

Boeing 737-600/700/800/900/900ER/8

## ADJUST LINK – POSITIONS #1, #2, #7 and #8

ATA Chapter: 27-51



113A9105-7

### PRODUCT DESCRIPTION

Component of the Flap Track Fairing Module that serves as an aft attach point to hold the corresponding Flap Track Fairing in place

P/N: 113A9105-7ATSMRO holds #1 and #8

P/N: 113A9205-7ATSMRO holds #2 and #7

### ATS PART NUMBER

113A9105-7ATSMRO

113A9205-7ATSMRO

### OEM PART NUMBER

113A9105-7

113A9205-7



113A9205-7

### TECHNICAL SPECIFICATIONS

- FAA PMA PQ5315NM, Supplement 42.
- Equivalent in fit, form and function to OEM assembly.

- Aluminum material

#### 113A9105-7ATSMRO:

- 13.45 inches long x 6.77 inches wide x 1.90 inches deep.

- Approximate Weight = 1.45 lbs.

#### 113A9205-7ATSMRO:

- 13.74 inches long x 7.16 inches wide x 1.90 inches deep.

- Approximate Weight = 1.50 lbs.

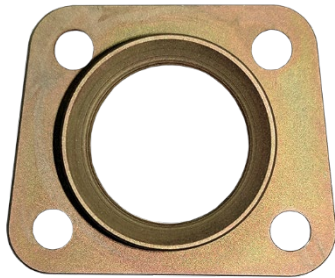
### AIRCRAFT APPLICATION

Boeing 737-600/700/800/900/900ER/8/9

# 27: FLIGHT CONTROLS

## BUSHING - ADJUST LINK

ATA Chapter: 27-51, 57-53



### PRODUCT DESCRIPTION

Component of the Flap Track Fairing Module that serves as an aft attach point to hold the #1/#2/#3/#6/#7/#8 Flap Track Fairing in place

### ATS PART NUMBER

113A9120-1ATSMRO

### OEM PART NUMBER

113A9120-1

### TECHNICAL SPECIFICATIONS

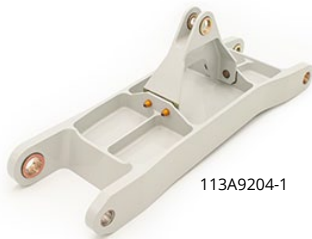
- Bushing - Adjust Link (P/N: 113A9120-1ATSMRO) is a detail that feeds into Adjust Link Assembly (P/N: 113A9305-5ATSMRO, Supplement 24)

### AIRCRAFT APPLICATION

Boeing 737-600/700/800/900/900ER/8

## ATTACH BEAM ASSEMBLY - POSITIONS #2 and #7

ATA Chapter: 27-51



113A9204-1



113A9204-2

### PRODUCT DESCRIPTION

Component of the Flap Track Fairing Module that serves as an aft attach point to hold the corresponding Flap Track Fairing in place

P/N: 113A9204-1ATSMRO holds #2

P/N: 113A9204-2ATSMRO holds #7

### ATS PART NUMBER

113A9204-1ATSMRO

113A9204-2ATSMRO

### OEM PART NUMBER

113A9204-1

113A9204-2

### TECHNICAL SPECIFICATIONS

- FAA PMA PQ5315NM, Supplement 41
- Equivalent in fit, form and function to OEM assembly
- 15.94-inches-long x 5.17-inches-wide x 6.01-inches-deep
- Approximate Weight = 3.40 lbs.
- Aluminum material

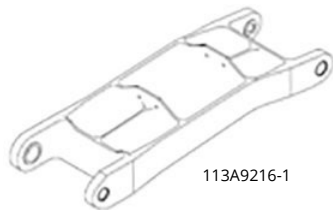
### AIRCRAFT APPLICATION

Boeing 737-600/700/700C/800/900/900ER/8/9

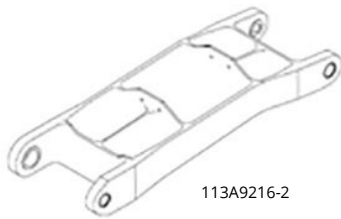
# 27: FLIGHT CONTROLS

## BEAM ASSEMBLY – POSITIONS #2 and #7

ATA Chapter: 27-51



113A9216-1



113A9216-2

### PRODUCT DESCRIPTION

Component of the Flap Track Fairing Module that serves as an aft attach point to hold the corresponding Flap Track Fairing in place

P/N: 113A9216-1ATSMRO holds #2

P/N: 113A9216-2ATSMRO holds #7

### ATS PART NUMBER

113A9216-1ATSMRO

113A9216-2ATSMRO

### OEM PART NUMBER

113A9216-1

113A9216-2

### TECHNICAL SPECIFICATIONS

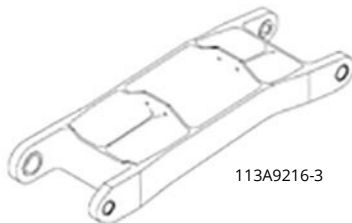
- FAA PMA PQ5315NM, Supplement 41
- Equivalent in fit, form and function to OEM assembly
- 15.70-inches-long x 5.17-inches-wide x 2.60-inches-deep.
- Approximate Weight = 3.40 lbs.
- Aluminum material

### AIRCRAFT APPLICATION

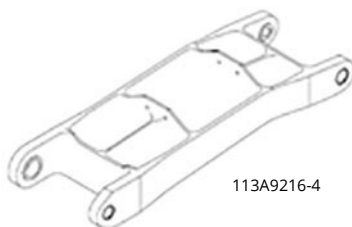
Boeing 737-600/700/700C/800/900/900ER/8/9

## ATTACH BEAM – POSITIONS #2 and #7

ATA Chapter: 27-51



113A9216-3



113A9216-4

### PRODUCT DESCRIPTION

Component of the Flap Track Fairing Module that serves as an aft attach point to hold the corresponding Flap Track Fairing in place

P/N: 113A9216-3ATSMRO holds #2

P/N: 113A9216-4ATSMRO holds #7

### ATS PART NUMBER

113A9216-3ATSMRO

113A9216-4ATSMRO

### OEM PART NUMBER

113A9216-3

113A9216-4

### TECHNICAL SPECIFICATIONS

- FAA PMA PQ5315NM, Supplement 41
- Equivalent in fit, form and function to OEM assembly
- 15.70-inches-long x 5.17-inches-wide x 2.60-inches-deep.
- Approximate Weight = 3.40 lbs.
- Aluminum material

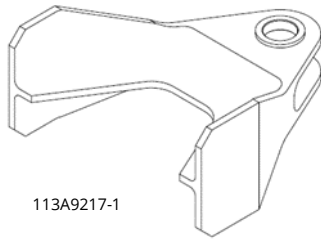
### AIRCRAFT APPLICATION

Boeing 737-600/700/700C/800/900/900ER/8/9

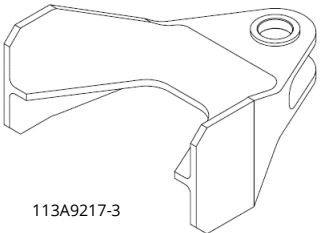
# 27: FLIGHT CONTROLS

## FITTING ASSEMBLY – POSITIONS #2 and #7

ATA Chapter: 27-51



113A9217-1



113A9217-3

### PRODUCT DESCRIPTION

Component of the Flap Track Fairing Module that serves as an aft attach point to hold the #2 and #7 Flap Track Fairing in place

### ATS PART NUMBER

113A9217-1ATSMRO  
113A9217-3ATSMRO

### OEM PART NUMBER

113A9217-1  
113A9217-3

### TECHNICAL SPECIFICATIONS

- FAA PMA PQ5315NM, Supplement 41
- Equivalent in fit, form and function to OEM assembly
- 4.37-inches-long x 4.24-inches-wide x 2.10-inches-deep.
- Aluminum material

### AIRCRAFT APPLICATION

Boeing 737-600/700/700C/800/900/900ER/8/9

## ATTACH BEAM ASSEMBLY – POSITIONS #3 and #6

ATA Chapter: 27-51



### PRODUCT DESCRIPTION

Component of the Flap Track Fairing Module that serves as an aft attach point to hold the #3 and #6 Flap Track Fairings in place

### ATS PART NUMBER

113A9304-1ATSMRO

### OEM PART NUMBER

113A9304-1

### TECHNICAL SPECIFICATIONS

- FAA PMA PQ5315NM, Supplement 23
- Equivalent in fit, form and function to OEM assembly
- 11.31-inches-long x 5.07-inches-wide x 1.64-inches-deep
- Approximate Weight = 2.04 lbs.
- Aluminum material

### AIRCRAFT APPLICATION

Boeing 737-600/700/700C/800/900/900ER/8

## ADJUST LINK ASSEMBLY

ATA Chapter: 27-51, 57-53



### PRODUCT DESCRIPTION

Component of the Flap Track Fairing Module that serves as an aft attach point to hold the #3 and #6 Flap Track Fairing in place

### ATS PART NUMBER

113A9305-5ATSMRO

### OEM PART NUMBER

113A9305-5

### TECHNICAL SPECIFICATIONS

- FAA PMA PQ5315NM, Supplement 24.
- Equivalent in fit, form and function to OEM assembly.
- 15.3 inches long x 6.8 inches wide x 1.9 inches deep.
- Approximate Weight = 1.65 lbs

### AIRCRAFT APPLICATION

Boeing 737-600/700/800/900/900ER/8



Trusted Partners  
Supporting Flight



# 27: FLIGHT CONTROLS

## ADJUST LINK

ATA Chapter: 27-51, 57-53



### PRODUCT DESCRIPTION

Component of the Flap Track Fairing Module that serves as an aft attach point to hold the #3 and #6 Flap Track Fairing in place

### ATS PART NUMBER

113A9305-7ATSMRO

### OEM PART NUMBER

113A9305-7

### TECHNICAL SPECIFICATIONS

- Adjust Link (P/N: 113A9305-7ATSMRO) is a detail that feeds into Adjust Link Assembly (P/N: 113A9305-5ATSMRO, Supplement 24)

### AIRCRAFT APPLICATION

Boeing 737-600/700/800/900/900ER/8

## DRIVE ROD ASSEMBLY and ADJUST ROD ASSEMBLY

ATA Chapter: 27-51



113A9306-4



113A9307-4

### PRODUCT DESCRIPTION

Components of the Flap Track Fairing Module that serves as an aft attach point to hold Flap Track Fairing in place

Both Drive Rod Assembly (P/N: 113A9306-4ATSMRO) and Adjust Rod Assembly (P/N: 113A9307-4ATSMRO) hold #3 and #6

### ATS PART NUMBER

113A9306-4ATSMRO

113A9307-4ATSMRO

### OEM PART NUMBER

113A9306-1, 113A9306-4

113A9307-1, 113A9307-4

### TECHNICAL SPECIFICATIONS

- FAA PMA PQ5315NM, Supplement 51
- Equivalent in fit, form and function to OEM assembly

#### 113A9306-4ATSMRO:

- 9.76 inches long x 0.675 inches diameter
- Approximate Weight = 0.44 lbs.

#### 113A9307-4ATSMRO:

- 10.89 inches long x 0.675 inches diameter
- Approximate Weight = 0.46 lbs.

### AIRCRAFT APPLICATION

Boeing 737-600/700/700C/800/900/900ER/8/9

## PIVOT BOLT - #1, #2, #3, #6, #7 and #8

ATA Chapter: 27-51



113A9308-1



113A9208-1

### PRODUCT DESCRIPTION

Component of the Flap Track Fairing Module that serves as an aft attach point to hold the corresponding Flap Track Fairing in place +D27

### ATS PART NUMBER

113A9308-1ATSMRO

113A9208-1ATSMRO

### OEM PART NUMBER

113A9308-1

113A9208-1

### TECHNICAL SPECIFICATIONS

- FAA PMA PQ5315NM, Supplement 43
- Equivalent in fit, form and function to OEM assembly

- Annealed Bar material

#### 113A9308-1ATSMRO:

- 11.22 inches long x 0.498 inches diameter.
- Approximate Weight = 0.37 lbs.

#### 113A9208-1ATSMRO:

- 11.06 inches long x 0.623 inches diameter.
- Approximate Weight = 0.56 lbs.

### AIRCRAFT APPLICATION

Boeing 737-600/700/700C/800/900/900ER/8/9

# 27: FLIGHT CONTROLS

## BUSHING – POSITIONS #1, #2, #3, #6, #7 and #8

ATA Chapter: 27-51



113A9309-1



113A9209-1

### PRODUCT DESCRIPTION

Component of the Flap Track Fairing Module that serves as an aft attach point to hold the corresponding Flap Track Fairings in place

P/N: 113A9309-1ATSMRO holds #3 and #6

P/N: 113A9209-1ATSMRO holds #1, #2, #7 and #8

### ATS PART NUMBER

113A9309-1ATSMRO

113A9209-1ATSMRO

### OEM PART NUMBER

113A9309-1

113A9209-1

### TECHNICAL SPECIFICATIONS

- FAA PMA PQ5315NM, Supplement 43
- Equivalent in fit, form and function to OEM assembly

- Annealed Bar material

#### 113A9309-1ATSMRO:

- 9.46-inches-long x 0.686 inches diameter
- Approximate Weight = 0.26 lbs.

#### 113A9209-1ATSMRO:

- 8.72-inches-long x 0.874 inches diameter
- Approximate Weight = 0.41 lbs.

### AIRCRAFT APPLICATION

Boeing 737-600/700/700C/800/900/900ER/8/9

## AFT BULKHEAD – FLAP SUPPORT

ATA Chapter: 27-51, 57-53



113A9360-1ATSMRO



113A9360-2ATSMRO



### PRODUCT DESCRIPTION

The Bulkhead Assy is a component of the inboard T/E flap AFT Fairing. It functions to support a link and rod assembly used to adjust clearance between the top surface of the AFT Fairing and T/E flap

### ATS PART NUMBER

113A9360-1ATSMRO

113A9360-2ATSMRO

### OEM PART NUMBER

113A9360-1

113A9360-2

### TECHNICAL SPECIFICATIONS

- FAA PMA PQ5315NM, Supplement 101
- Equivalent in fit, form and function to OEM part

### AIRCRAFT APPLICATION

Boeing 737-600/700/700C/800/900/900ER

# 27: FLIGHT CONTROLS

## RUBSTRIP – AFT FAIRING, FLAP SUPPORT No. 3 and No. 6

ATA Chapter: 27-51



### PRODUCT DESCRIPTION

Rubstrip is located on the inner face of the No. 3 and No. 6 Aft Fairings and act as a wear surface to the wing flap actuation structure

### ATS PART NUMBER

113A9380-1ATSMRO  
113A9380-2ATSMRO

### OEM PART NUMBER

113A9380-1  
113A9380-2

### TECHNICAL SPECIFICATIONS

- FAA PMA PQ5315NM, Supplement 77.
- Equivalent in fit, form and function to OEM.
- Material: Delrin Sheet

### AIRCRAFT APPLICATION

#### 113A9380-1ATSMRO:

Boeing 737-600/700/700C/800/900/900ER

#### 113A9380-2ATSMRO:

Boeing 737-700/700C/800/900ER/8/9

## BEAM ASSEMBLY

ATA Chapter: 27-51, 57-50



### PRODUCT DESCRIPTION

The Beam Assemblies are components of the Inboard Trailing Edge fixed lower panel assembly. The Beam Assy provides attachment points for adjustment rods, which can be adjusted to maintain a smooth aerodynamic surface where the fixed lower T/E panel transitions to the INBD flap

### ATS PART NUMBER

115A2759Y5ATSMRO  
115A2759Y6ATSMRO  
115A2759Y13ATSMRO  
115A2759Y14ATSMRO

### OEM PART NUMBER

115A2759Y5  
115A2759Y6  
115A2759Y13  
115A2759Y14

### TECHNICAL SPECIFICATIONS

- FAA PMA PQ5315NM, Supplement 92
- Equivalent in fit, form and function to OEM part

### AIRCRAFT APPLICATION

#### 115A2759Y5ATSMRO & 115A2759Y6ATSMRO:

Boeing 737-600/700/700C/800/900

#### 115A2759Y13ATSMRO &

#### 115A2759Y14ATSMRO:

Boeing 737-600/700/700C/800/900ER/8/9/8200



# 27: FLIGHT CONTROLS

## RETAINER

ATA Chapter: 27-51, 57-53



### PRODUCT DESCRIPTION

Component of the Flap Track Fairing Module that serves as an aft attach point to hold the #1/#2/#3/#6/#7/#8 Flap Track Fairing in place

### ATS PART NUMBER

69B14136-2ATSMRO

### OEM PART NUMBER

69B14136-2

### TECHNICAL SPECIFICATIONS

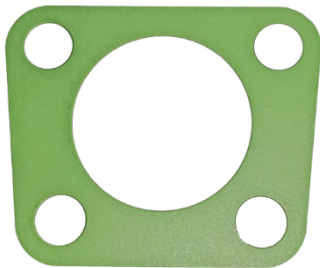
- Retainer (P/N: 69B14136-2ATSMRO) is a detail that feeds into Adjust Link Assembly (P/N: 113A9305-5ATSMRO, Supplement 24)

### AIRCRAFT APPLICATION

Boeing 737-600/700/800/900/900ER/8

## SHIM - LAMINATED

ATA Chapter: 27-51, 57-53



### PRODUCT DESCRIPTION

Component of the Flap Track Fairing Module that serves as an aft attach point to hold the #1/#2/#3/#6/#7/#8 Flap Track Fairing in place

### ATS PART NUMBER

69B14136-3ATSMRO

### OEM PART NUMBER

69B14136-3

### TECHNICAL SPECIFICATIONS

- Shim - Laminated (P/N: 69B14136-3ATSMRO) is a detail that feeds into Adjust Link Assembly (P/N: 113A9305-5ATSMRO, Supplement 24)

### AIRCRAFT APPLICATION

Boeing 737-600/700/800/900/900ER/8

## GIMBAL - POSITIONS #1, #2, #3, #6, #7 and #8

ATA Chapter: 27-51



### PRODUCT DESCRIPTION

Part of the gimbal that moves the trailing edge flap surface. The gimbal connects the ballscrew nut and moves as the ballscrew turns. Two bushings join the ballscrew nut and gimbal

### ATS PART NUMBER

ADU18-8ATSMRO

### OEM PART NUMBER

ADU18-8

### TECHNICAL SPECIFICATIONS

- FAA PMA PQ5315NM, Supplement 49
- Equivalent in fit, form and function to OEM assembly
- 1.5" x 1.0"
- Approximate Weight = 0.24 lbs.
- CRES bar material

### AIRCRAFT APPLICATION

Boeing 737-600/700/700C/800/900/900ER/8/9  
Boeing 757-200/200PF/200CB/300

# 27: FLIGHT CONTROLS

## ELASTOMERIC BUSHING

ATA Chapter: 27-51



### PRODUCT DESCRIPTION

Provides vibration dampening within the Fitting Sub-Assemblies - components of the trailing edge flap system

### ATS PART NUMBER

SY10670ATSMRO

### OEM PART NUMBER

SY10670

### TECHNICAL SPECIFICATIONS

- FAA PMA PQ5315NM, Supplement 50.
- Equivalent in fit, form and function to OEM assembly
- 0.63" x 0.91" (1" Round Stock)
- Approximate Weight = 0.04 lbs.
- Stainless steel material

### AIRCRAFT APPLICATION

Boeing 737-600/700/700C/800/900/900ER/8/9

## HYDRAULIC FUSE HOUSING

ATA Chapter: 27-81, 29-11, 32-31, 78-34



7-2882-5

### PRODUCT DESCRIPTION

Precision machined tube that houses a piston, metering cone, metering body, piston spring, metering cylinder and other parts to satisfy operation parameters indicated for its application

Housing typically replaced during overhaul or rebuild of Flow Rate Fuse Assembly. Each fuse configuration has been designed to accommodate specific dimensional, weight and hydraulic interface requirements

### ATS PART NUMBER

7-2882-4ATS

7-2882-5ATS

7-2882-6ATS

### OEM PART NUMBER

7-2882-4

7-2882-5

7-2882-6

### TECHNICAL SPECIFICATIONS

- FAA PMA PQ5315NM, Supplement 1
- Equivalent in fit, form and function to OEM assembly
- -4: 4.45-inch-Long x 1.75-inch diameter
- -5: 5.17-inch-Long x 1.75-inch diameter
- -6: 5.78-inch-Long x 1.75-inch diameter
- Approximate Weight = 0.41 lbs.
- Aluminum material

### AIRCRAFT APPLICATION

Boeing 737-300/400/500/600/700/700C/800/900/900ER

# 27: FLIGHT CONTROLS

## RETAINER – KRUEGER SEAL

ATA Chapter: 27-81, 57-56



114A1811-1ATSMRO

114A1811-2ATSMRO

### PRODUCT DESCRIPTION

The Retainer secures a Krueger Flap Seal. During Flap extension and retraction, the Krueger Seal protects the Thrust Reverser from abrading the Krueger Flap

### ATS PART NUMBER

114A1811-1ATSMRO  
114A1811-2ATSMRO

### OEM PART NUMBER

114A1811-1  
114A1811-2

### TECHNICAL SPECIFICATIONS

- FAA PMA PQ5315NM, Supplement 103
- Equivalent in fit, form and function to OEM part

### AIRCRAFT APPLICATION

Boeing 737-600/700/700C/800/900/900ER

## WEAR PAD – KRUEGER SEAL

ATA Chapter: 27-81, 57-56



### PRODUCT DESCRIPTION

The Wear Pad fastens to the Krueger Seal Retainer. During Flap extension and retraction, the Krueger Seal assembly protects the Thrust Reverser from abrading the Krueger Flap

### ATS PART NUMBER

114A1811-3ATSMRO

### OEM PART NUMBER

114A1811-3

### TECHNICAL SPECIFICATIONS

- FAA PMA PQ5315NM, Supplement 103
- Equivalent in fit, form and function to OEM part

### AIRCRAFT APPLICATION

Boeing 737-600/700/700C/800/900/900ER

# 28: FUEL

## VORTEX GENERATOR

ATA Chapter: 28-12



### PRODUCT DESCRIPTION

Reduces whining noise on approach

### ATS PART NUMBER

780001-500-501

### OEM PART NUMBER

N/A

### TECHNICAL SPECIFICATIONS

- FAA PMA PQ5315NM, Supplement 14.
- Approval basis: STC ST02577SE
- Equivalent in fit, form and function to OEM assembly
- No impact to fuel overpressure protection ventilation system
- Installs in existing fastener holes on fuel vent panel – no drilling required
- Four generators required per plane, kit option available
- FAA and EASA approved

### AIRCRAFT APPLICATION

Airbus A319, A320

## VORTEX GENERATOR

ATA Chapter: 28-12



### PRODUCT DESCRIPTION

Reduces whining noise on approach

### ATS PART NUMBER

780001-500-503

### OEM PART NUMBER

N/A

### TECHNICAL SPECIFICATIONS

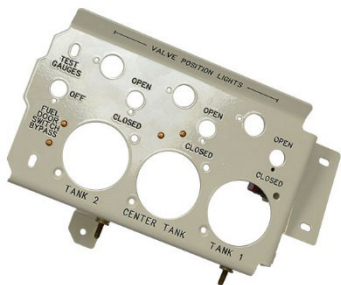
- FAA PMA PQ5315NM, Supplement 14
- Approval basis: STC ST02577SE
- Equivalent in fit, form and function to OEM assembly
- No impact to fuel overpressure protection ventilation system
- Installs in existing fastener holes on fuel vent panel – no drilling required
- Four generators required per plane, kit option available
- FAA and EASA approved

### AIRCRAFT APPLICATION

Airbus A321

## REFUELING STATION PANEL ASSEMBLY

ATA Chapter: 28-21



### PRODUCT DESCRIPTION

Serves as a holding panel for Refueling Station Instruments

### ATS PART NUMBER

654A0004-366ATSMRO

### OEM PART NUMBER

654A0004-366

### TECHNICAL SPECIFICATIONS

- FAA PMA PQ5315NM, Supplement 26
- Equivalent in fit, form and function to OEM assembly
- Aluminum construction with Skydrol™ resistant treatment

### AIRCRAFT APPLICATION

Boeing 737-600/700/700C/800/900/900ER/8/9

© 2023 Aviation Technical Services – 8/2023



Trusted Partners  
Supporting Flight

For more information contact:

[sales@rangeraav.com](mailto:sales@rangeraav.com)

+1 972 245 6699

[ATSmro.com](http://ATSmro.com)

# 29: HYDRAULIC POWER

## HYDRAULIC FUSE HOUSING

ATA Chapter: 29-11, 27-81, 32-31, 78-34



7-2882-5

### PRODUCT DESCRIPTION

Precision machined tube that houses a piston, metering cone, metering body, piston spring, metering cylinder and other parts to satisfy operation parameters indicated for its application

Housing typically replaced during overhaul or rebuild of Flow Rate Fuse Assembly. Each fuse configuration has been designed to accommodate specific dimensional, weight and hydraulic interface requirements

### ATS PART NUMBER

7-2882-4ATS  
7-2882-5ATS  
7-2882-6ATS

### OEM PART NUMBER

7-2882-4  
7-2882-5  
7-2882-6

### TECHNICAL SPECIFICATIONS

- FAA PMA PQ5315NM, Supplement 1
- Equivalent in fit, form and function to OEM assembly
- -4: 4.45-inch-Long x 1.75-inch diameter
- -5: 5.17-inch-Long x 1.75-inch diameter
- -6: 5.78-inch-Long x 1.75-inch diameter
- Approximate Weight = 0.41 lbs.
- Aluminum material

### AIRCRAFT APPLICATION

Boeing 737-300/400/500/600/700/700C/800/900/900ER

## RESERVOIR DEPRESSURIZATION VALVE ASSEMBLY

ATA Chapter: 29-11



### PRODUCT DESCRIPTION

Releases system pressure in aircraft hydraulic reservoirs for maintenance or servicing

### ATS PART NUMBER

HV22-31ATS

### OEM PART NUMBER

HV22-31

### TECHNICAL SPECIFICATIONS

- FAA PMA PQ5315NM, Supplement 28
- Equivalent in fit, form and function to OEM assembly
- Stainless steel construction with cadmium plate protective treatment

### AIRCRAFT APPLICATION

Boeing 747-400  
Boeing 757-200  
Boeing 767-200/300  
Boeing 777-200

# 29: HYDRAULIC POWER

## CLAMP ASSY – HYDRAULIC SUPPORT

ATA Chapter: 29-11

272A0101-35ATSMRO



272A0101-38ATSMRO



272A0101-126ATSMRO



### PRODUCT DESCRIPTION

The Clamp Assy is a component of the hydraulic support clamp installation in the wing trailing edge. It supports hydraulic tubes, maintain static clearance between adjacent components, and attenuate vibration.

### ATS PART NUMBER

272A0101-35ATSMRO

272A0101-38ATSMRO

272A0101-126ATSMRO

### OEM PART NUMBER

272A0101-35

272A0101-38

272A0101-126

### TECHNICAL SPECIFICATIONS

- FAA PMA PQ5315NM, Supplement 83, 106, 108
- Equivalent in fit, form and function to OEM part

### AIRCRAFT APPLICATION

Boeing 737-700/800/8



# 29: HYDRAULIC POWER

## CLAMP BLOCK – HYDRAULIC SUPPORT

ATA Chapter: 29-11

272A0111-60ATSMRO



272A0111-61ATSMRO



272A0111-62ATSMRO



### PRODUCT DESCRIPTION

The Clamp Blocks are installed on hydraulic lines in the wing trailing edge. They function to support and attenuate hydraulic tubes and maintain static clearance between tubes and equipment, wire bundles, and structure. In addition, they attenuate tube motion

### ATS PART NUMBER

272A0111-60ATSMRO  
272A0111-61ATSMRO  
272A0111-62ATSMRO

### OEM PART NUMBER

272A0111-60  
272A0111-61  
272A0111-62

### TECHNICAL SPECIFICATIONS

- FAA PMA PQ5315NM, Supplement 106
- Equivalent in fit, form and function to OEM part

### AIRCRAFT APPLICATION

Boeing 737-700/800/8

# 29: HYDRAULIC POWER

## CLAMP BLOCK – HYDRAULIC SUPPORT

ATA Chapter: 29-11



### PRODUCT DESCRIPTION

The Clamp Block Brackets are installed on hydraulic lines in the wing trailing edge. They function to support and attenuate hydraulic tubes and maintain static clearance between tubes and equipment, wire bundles, and structure. In addition, they attenuate tube motion

### ATS PART NUMBER

272A0111-64ATSMRO  
272A0111-71ATSMRO

### OEM PART NUMBER

272A0111-64  
272A0111-71

### TECHNICAL SPECIFICATIONS

- FAA PMA PQ5315NM, Supplement 83
- Equivalent in fit, form and function to OEM part

### AIRCRAFT APPLICATION

Boeing 737-600/700/700C/800/900/900ER/8/9

## RESERVOIR PRESSURIZATION MANIFOLD

ATA Chapter: 29-20



### PRODUCT DESCRIPTION

Controls pneumatic pressurization of aircraft hydraulic reservoirs

### ATS PART NUMBER

732-11242ATS

### OEM PART NUMBER

732-11242

### TECHNICAL SPECIFICATIONS

- FAA PMA PQ5315NM, Supplement 12
- Equivalent in fit, form and function to OEM assembly
- Superior machined aluminum construction compared to cast aluminum OEM part
- Anodized for improved corrosion resistance

### AIRCRAFT APPLICATION

Boeing 737-300/400/500  
Boeing 747-100/200/200B/200C/200F/SP/SR  
Boeing 757-200/200CB/200PF



# 29: HYDRAULIC POWER

## FILTER CAP

ATA Chapter: 29-20



### PRODUCT DESCRIPTION

Retains and provides access to the reservoir pressurization module filter

Component of the main hydraulic reservoir pressurization module

### ATS PART NUMBER

732-11613ATS

### OEM PART NUMBER

732-11613

### TECHNICAL SPECIFICATIONS

- FAA PMA PQ5315NM, Supplement 4
- Equivalent in fit, form and function to OEM part
- Aluminum material
- Anodized finish for improved corrosion protection

### AIRCRAFT APPLICATION

Boeing 747-200B/200C/200F/300/400/400D/  
400SP/400SR

Boeing 767-200/300

Boeing 777-200

# 30: ICE AND RAIN PROTECTION

## SPRING - COMPRESSION

ATA Chapter: 30-21, 75-10



### PRODUCT DESCRIPTION

Located in the Engine Nose Cowl Thermal Anti-Ice (TAI) Valve, the Compression Spring is a component of the TAI valve body shaft. It compresses a self-aligning bearing and pre-loads it against the valve body to fix the bearing's position within the housing

### ATS PART NUMBER

323660ATSMRO

### OEM PART NUMBER

323660

### TECHNICAL SPECIFICATIONS

- FAA PMA PQ5315NM, Supplement 97, 109
- Equivalent in fit, form and function to OEM

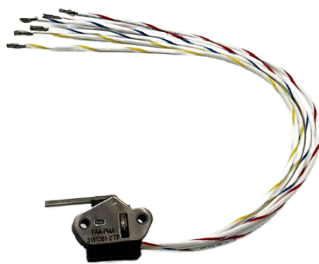
### AIRCRAFT APPLICATION

Boeing MD-11F

Airbus A300 Model F4-605R

## SWITCH

ATA Chapter: 30-21



### PRODUCT DESCRIPTION

Component of Nose Cowl Anti-Ice Valve

### ATS PART NUMBER

3181381-2TP

### OEM PART NUMBER

3181381-2

### TECHNICAL SPECIFICATIONS

- FAA PMA PQ5315NM, Supplement 63.
- Equivalent in fit, form and function to OEM

### AIRCRAFT APPLICATION

Boeing 737-600/700/800/900

# 32: LANDING GEAR

## HYDRAULIC FUSE HOUSING

ATA Chapter: 32-31, 27-81, 29-11, 78-34



7-2882-5

### PRODUCT DESCRIPTION

Precision machined tube that houses a piston, metering cone, metering body, piston spring, metering cylinder and other parts to satisfy operation parameters indicated for its application

Housing typically replaced during overhaul or rebuild of Flow Rate Fuse Assembly. Each fuse configuration has been designed to accommodate specific dimensional, weight and hydraulic interface requirements

### ATS PART NUMBER

7-2882-4ATS

7-2882-5ATS

7-2882-6ATS

### OEM PART NUMBER

7-2882-4

7-2882-5

7-2882-6

### TECHNICAL SPECIFICATIONS

- FAA PMA PQ5315NM, Supplement 1
- Equivalent in fit, form and function to OEM assembly
- -4: 4.45-inch-Long x 1.75-inch diameter
- -5: 5.17-inch-Long x 1.75-inch diameter
- -6: 5.78-inch-Long x 1.75-inch diameter
- Approximate Weight = 0.41 lbs.
- Aluminum material

### AIRCRAFT APPLICATION

Boeing 737-300/400/500/600/700/700C/800/900/900ER

## CUP WASHER

ATA Chapter: 32-32



### PRODUCT DESCRIPTION

Lock washers keep respective threaded components from backing off during service

### ATS PART NUMBER

734-17378ATS

### OEM PART NUMBER

734-17378

### TECHNICAL SPECIFICATIONS

- FAA PMA PQ5315NM, Supplement 2
- Equivalent in fit, form and function to OEM assembly
- Tested for Proof Pressure and Ultimate Pressure against OEM data
- Stainless steel material

### AIRCRAFT APPLICATION

Boeing 777-200/300

## CUP WASHER

ATA Chapter: 32-32



### PRODUCT DESCRIPTION

Lock washers keep respective threaded components from backing off during service

### ATS PART NUMBER

734-17379ATS

### OEM PART NUMBER

734-17379

### TECHNICAL SPECIFICATIONS

- FAA PMA PQ5315NM, Supplement 2
- Equivalent in fit, form and function to OEM assembly
- Tested for Proof Pressure and Ultimate Pressure against OEM data
- Stainless steel material

### AIRCRAFT APPLICATION

Boeing 777-200/300

# 32: LANDING GEAR

## CUP WASHER

ATA Chapter: 32-32



### PRODUCT DESCRIPTION

Lock washers keep respective threaded components from backing off during service

### ATS PART NUMBER

734-17382ATS

### OEM PART NUMBER

734-17382

### TECHNICAL SPECIFICATIONS

- FAA PMA PQ5315NM, Supplement 2
- Equivalent in fit, form and function to OEM assembly
- Tested for Proof Pressure and Ultimate Pressure against OEM data
- Stainless steel material

### AIRCRAFT APPLICATION

Boeing 777-200/300

© 2023 Aviation Technical Services – 8/2023



Trusted Partners  
Supporting Flight

For more information contact:

[sales@rangeraav.com](mailto:sales@rangeraav.com)

+1 972 245 6699

[ATSmro.com](http://ATSmro.com)

# 33: LIGHTS

## MAP LIGHT LENS ASSEMBLY

ATA Chapter: 33-10



### PRODUCT DESCRIPTION

Component of the Cockpit Floodlight Assembly  
Installs in multiple locations per aircraft

### ATS PART NUMBER

16-0095-1ATSMRO

### OEM PART NUMBER

16-0095-1

### TECHNICAL SPECIFICATIONS

- FAA PMA PQ5315NM, Supplement 18
- Equivalent in fit, form and function to OEM map light assembly
- Light illumination is identical to OEM part
- Lexan Lens for excellent impact resistance and high optical quality
- Brass Cup Rivet for superior corrosion resistance
- Dimensions: 1.49" x 0.43"

### AIRCRAFT APPLICATION

Boeing 737-300/400/500/600/700/700C/800/  
900/900ER/8/9

Boeing 757-200/200PF/300  
Boeing 767-300/300F

## CARGO GRILLE LENS ASSEMBLY

ATA Chapter: 33-36



### PRODUCT DESCRIPTION

Protects cargo compartment light assemblies  
from impact damage

### ATS PART NUMBER

15-0712-7ATSMRO

### OEM PART NUMBER

15-0712-7

### TECHNICAL SPECIFICATIONS

- FAA PMA PQ5315NM, Supplement 22
- Equivalent in fit, form and function to OEM assembly

### AIRCRAFT APPLICATION

Boeing 737-600/700/700C/800/900

## CARGO GRILLE LENS ASSEMBLY

ATA Chapter: 33-36



### PRODUCT DESCRIPTION

Protects cargo compartment light assemblies  
from impact damage

### ATS PART NUMBER

15-0712-12ATSMRO

### OEM PART NUMBER

15-0712-12

### TECHNICAL SPECIFICATIONS

- FAA PMA PQ5315NM, Supplement 22
- Equivalent in fit, form and function to OEM assembly

### AIRCRAFT APPLICATION

Boeing 737-600/700/800/900/900ER

© 2023 Aviation Technical Services – 8/2023

# 34: NAVIGATION

## WIRE HARNESS W7193 – MARKER BEACON ANTENNA

ATA Chapter: 34-31



### PRODUCT DESCRIPTION

The Marker Beacon Wire Harness provides an electrical connection between the marker beacon antenna and shipside wiring. The Marker Beacon assists in identifying distance to the runway

### ATS PART NUMBER

286A7193-001ATSMRO

### OEM PART NUMBER

286A7193-001

### TECHNICAL SPECIFICATIONS

- FAA PMA PQ5315NM, Supplement 111
- Equivalent in fit, form and function to OEM part

### AIRCRAFT APPLICATION

Boeing 737-600/700/800/900/900ER/8/9/8200

© 2025 Aviation Technical Services – 1/2025



Trusted Partners  
Supporting Flight

For more information contact:

[sales@rangeraav.com](mailto:sales@rangeraav.com)

+1 972 245 6699

[ATSmro.com](http://ATSmro.com)



# 36: PNEUMATIC

## BRACKET ASSY - UPPER LEFT

ATA Chapter: 36-11, 71-00



### PRODUCT DESCRIPTION

The Bracket Assy is installed to the Engine Fan Case/Frame, Flange A1. It provides support/stabilization to the Lower Pneumatic Starter Duct

### ATS PART NUMBER

332A2930-7ATSMRO

### OEM PART NUMBER

332A2930-7

### TECHNICAL SPECIFICATIONS

- FAA PMA PQ5315NM, Supplement 107
- Equivalent in fit, form and function to OEM part

### AIRCRAFT APPLICATION

Boeing 737-700/800

## BRACKET ASSEMBLY

ATA Chapter: 36-13



212A1214-1ATSMRO



212A1214-3ATSMRO



212A1214-9ATSMRO

### PRODUCT DESCRIPTION

The Bracket Assemblies locate and support the Wing Leading Edge Air Supply duct, inboard of the engine strut

### ATS PART NUMBER

212A1214-1ATSMRO

212A1214-3ATSMRO

212A1214-9ATSMRO

### OEM PART NUMBER

212A1214-1

212A1214-3

212A1214-9

### TECHNICAL SPECIFICATIONS

- FAA PMA PQ5315NM, Supplement 94
- Equivalent in fit, form and function to OEM part

### AIRCRAFT APPLICATION

#### 212A1214-1ATSMRO:

Boeing 737-700/700C/800/900ER/8/9/8200

#### 212A1214-3ATSMRO:

Boeing 737-600/700/700C/800/900/900ER

#### 212A1214-9ATSMRO:

Boeing 737-600/700/700C/800/900/900ER

# 38: WATER / WASTE

## FITTING – WATER TANK

ATA Chapter: 38-11, 53-42



### PRODUCT DESCRIPTION

The Water Tank Fitting is a component of the Water/Waste Tank Enclosure in the Aft Cargo Compartment. It provides attach points for longitudinal angles, which in turn support the Water/Waste Tank Enclosure/Lining.

### ATS PART NUMBER

143A8113U6ATSMRO

### OEM PART NUMBER

143A8113U6

### TECHNICAL SPECIFICATIONS

- FAA PMA PQ5315NM, Supplement 108
- Equivalent in fit, form and function to OEM part

### AIRCRAFT APPLICATION

Boeing 737-700/800/8

## BRACKET – AFT SILL DRAIN

ATA Chapter: 38-31



### PRODUCT DESCRIPTION

Bracket is located between the STA967 and STA986.5 floor beam and provides support for the sill drain system

### ATS PART NUMBER

417A2106-71ATSMRO

### OEM PART NUMBER

417A2106-71

### TECHNICAL SPECIFICATIONS

- FAA PMA PQ5315NM, Supplement 66.
- Equivalent in fit, form and function to OEM

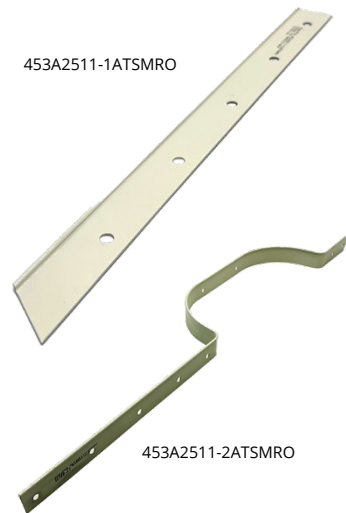
### AIRCRAFT APPLICATION

Boeing 737-600/700/700C/800/900

# 50: CARGO & ACCESSORY COMPARTMENTS

## CAPSTRIP, AFT CARGO LINER

ATA Chapter: 50-12



### PRODUCT DESCRIPTION

The PMA articles are components of the Aft Cargo Compartment STA 731 Bulkhead Lining Installation. They install on the vertical flange of the bulkhead liner and function as a closeout, preventing moisture and debris intrusion

### ATS PART NUMBER

453A2511-1ATSMRO  
453A2511-2ATSMRO

### OEM PART NUMBER

453A2511-1  
453A2511-2

### TECHNICAL SPECIFICATIONS

- FAA PMA PQ5315NM, Supplement 105
- Equivalent in fit, form and function to OEM part

### AIRCRAFT APPLICATION

Boeing 737-700/800/8

© 2024 Aviation Technical Services – 8/2024



Trusted Partners  
Supporting Flight

For more information contact:

[sales@rangeraav.com](mailto:sales@rangeraav.com)

+1 972 245 6699

[ATSmro.com](http://ATSmro.com)

# 51: STANDARD PRACTICES AND STRUCTURES

## FILLER – STA 796, AFT CARGO DOOR

ATA Chapter: 51-00, 53-13



### PRODUCT DESCRIPTION

Function as a ramp in the upper corners of the scuff plates to the doorway to give a smooth transition for the door seal

### ATS PART NUMBER

146A8344-1ATSMRO

### OEM PART NUMBER

146A8344-1

### TECHNICAL SPECIFICATIONS

- FAA PMA PQ5315NM, Supplement 65
- Equivalent in fit, form and function to OEM part

### AIRCRAFT APPLICATION

Boeing 737-600/700/700C/800/900/900ER/8/9

## FILLER – STA 846, AFT CARGO DOOR

ATA Chapter: 51-00, 53-13



### PRODUCT DESCRIPTION

Function as a ramp in the upper corners of the scuff plates to the doorway to give a smooth transition for the door seal

### ATS PART NUMBER

146A8344-2ATSMRO

### OEM PART NUMBER

146A8344-2

### TECHNICAL SPECIFICATIONS

- FAA PMA PQ5315NM, Supplement 65
- Equivalent in fit, form and function to OEM part

### AIRCRAFT APPLICATION

Boeing 737-600/700/700C/800/900/900ER/8/9

# 52: DOORS

## GUIDE TRACK ASSEMBLY - FWD ENTRY DOOR, STA 348.2

ATA Chapter: 52-11, 53-11



### PRODUCT DESCRIPTION

Interfaces with the fwd entry door-side ball guide to ensure door is properly located during open/close

### ATS PART NUMBER

141A6206-2ATSMRO

### OEM PART NUMBER

141A6206-2

### TECHNICAL SPECIFICATIONS

- FAA PMA PQ5315NM, Supplement 81
- Equivalent in fit, form and function to OEM assembly

### AIRCRAFT APPLICATION

Boeing 737-600/700/800/900/900ER/8/9

## SPIGOT - HINGE

ATA Chapter: 52-11



141A6271-3ATSMRO



141A6271-4ATSMRO

### PRODUCT DESCRIPTION

The Spigots are part of the FWD LH Entry Door Hinge Assy, which is the primary support for the entry door during opening/closing operations. The Spigots support the weight of the door and transfer torque to/from the hinge arms to open and close the door

### ATS PART NUMBER

141A6271-3ATSMRO

141A6271-4ATSMRO

### OEM PART NUMBER

141A6271-3

141A6271-4

### TECHNICAL SPECIFICATIONS

- FAA PMA PQ5315NM, Supplement 107
- Equivalent in fit, form and function to OEM part

### AIRCRAFT APPLICATION

Boeing 737-600/700/700C/800/900/900ER/8/9

## COVER PLATE ASSEMBLY

ATA Chapter: 52-11



### PRODUCT DESCRIPTION

The PMA article is installed on the FWD LH Entry Door Lining. It functions to close out the cutout in the door liner where the interior door handle is installed, mitigating dust and debris intrusion

### ATS PART NUMBER

411A2119-135AATSMRO

### OEM PART NUMBER

411A2119-135A

### TECHNICAL SPECIFICATIONS

- FAA PMA PQ5315NM, Supplement 104
- Equivalent in fit, form and function to OEM part

### AIRCRAFT APPLICATION

Boeing 737-600/700/700C/800/900/900ER

# 52: DOORS

## FITTING – AFT DOOR, STA 992.8

ATA Chapter: 52-11, 53-11



### PRODUCT DESCRIPTION

Interfaces with the aft entry and galley door-side ball guide to ensure door is properly located during open/close

### ATS PART NUMBER

654A0004-24ATSMRO

### OEM PART NUMBER

654A0004-24  
147A6158-1

### TECHNICAL SPECIFICATIONS

- FAA PMA PQ5315NM, Supplement 81
- Equivalent in fit, form and function to OEM part

### AIRCRAFT APPLICATION

Boeing 737-600/700/700C/800/900/900ER/8/9

## FITTING – GALLEY DOOR, STA 328

ATA Chapter: 52-11, 53-11



### PRODUCT DESCRIPTION

Interfaces with the fwd galley door-side ball guide to ensure door is properly located during open/close

### ATS PART NUMBER

654A0004-28ATSMRO

### OEM PART NUMBER

654A0004-28  
141A6557-1

### TECHNICAL SPECIFICATIONS

- FAA PMA PQ5315NM, Supplement 81
- Equivalent in fit, form and function to OEM part

### AIRCRAFT APPLICATION

Boeing 737-600/700/700C/800/900/900ER/8/9

## GUIDE ARM ASSEMBLY – AFT ENTRY GALLEY DOOR

ATA Chapter: 52-13



### PRODUCT DESCRIPTION

The Entry and Galley Door Guide Arm Assembly's function to assist in guiding the doors when opening, closing, and in holding the doors open

### ATS PART NUMBER

65-52854-7ATSMRO

### OEM PART NUMBER

65-52854-7

### TECHNICAL SPECIFICATIONS

- FAA PMA PQ5315NM, Supplement 84.
- Equivalent in fit, form, and function to OEM assembly

### AIRCRAFT APPLICATION

Boeing 737-600/700/700C/800/900/900ER/8/9



# 52: DOORS

## COVER PLATE ASSEMBLY

ATA Chapter: 52-13, 52-41



### PRODUCT DESCRIPTION

Decorative cover for entry door handle

### ATS PART NUMBER

411N2069-8BATSMRO (Soft White)  
411N2069-8DATSMRO (Bright White)

### OEM PART NUMBER

411N2069-8()

### TECHNICAL SPECIFICATIONS

- FAA PMA PQ5315NM, Supplement 19
- Equivalent in fit, form and function to OEM assembly
- Available in multiple colors to match original

### AIRCRAFT APPLICATION

Boeing 737-600/700/800/900ER/8/9

## EVERLATCH™ CARGO DOOR LATCH – AFT & FWD

ATA Chapter: 52-31



### PRODUCT DESCRIPTION

The EverLatch™ Cargo Door Latch by ATS is a cost-effective solution to a long-standing cargo door latch problem where operators experience fuselage skin and cargo door housing damage from sheared off nylon bumpers. The EverLatch is easy to install and is currently in service with airlines operating Boeing 737NGs

### ATS PART NUMBER

718932-100-101 (AFT)  
718932-111-101 (FWD)

### OEM PART NUMBER

H414-53 (AFT)  
H414-29 (FWD)

### TECHNICAL SPECIFICATIONS

- FAA Certified Design under STC # ST02525SE, PMA obtained
- Direct replacement for OEM part at a reduced cost

### AIRCRAFT APPLICATION

Boeing 737-600/700/700C/800/900/900ER/8

## BALL CLUTCH SHAFT

ATA Chapter: 52-34



### PRODUCT DESCRIPTION

Protects the Main Cargo Door Power Drive Unit when excessive torque is applied  
Component of Main Cargo Door Hinge Power Drive Unit

### ATS PART NUMBER

732-14281ATS

### OEM PART NUMBER

732-14281

### TECHNICAL SPECIFICATIONS

- FAA PMA PQ5315NM, Supplement 5
- Equivalent in fit, form and function to OEM assembly
- Carbonized to increase wear resistance
- Alloy steel material

### AIRCRAFT APPLICATION

Boeing 757-200/200PF/200CB/767-200/300/300F/400ER

# 52: DOORS

## GUIDE ARM ASSEMBLY – FWD GALLEY DOOR

ATA Chapter: 52-41



### PRODUCT DESCRIPTION

The Entry and Galley Door Guide Arm Assembly's function to assist in guiding the doors when opening, closing, and in holding the doors open

### ATS PART NUMBER

69-20321-4ATSMRO

### OEM PART NUMBER

69-20321-4

### TECHNICAL SPECIFICATIONS

- FAA PMA PQ5315NM, Supplement 84.
- Equivalent in fit, form, and function to OEM assembly

### AIRCRAFT APPLICATION

Boeing 737-600/700/700C/800/900/900ER/8/9

## ROD ASSEMBLY – A/C ACCESS DOOR SUPPORT

ATA Chapter: 52-48



### PRODUCT DESCRIPTION

Used to manually hold the ECS Access Door in an open configuration during maintenance operations

### ATS PART NUMBER

65-74573-3ATSMRO

### OEM PART NUMBER

65-74573-3

### TECHNICAL SPECIFICATIONS

- FAA PMA PQ5315NM, Supplement 55
- Equivalent in fit, form and function to OEM assembly

### AIRCRAFT APPLICATION

Boeing 737-600/700/700C/800/900/900ER/8/9

## HINGE ASSY – ECS ACCESS DOOR

ATA Chapter: 52-48



### PRODUCT DESCRIPTION

The Hinge Assys are components of the ECS Access Door Assy. They function to allow the door to open and close during maintenance

### ATS PART NUMBER

149A7234-1ATSMRO  
149A7234-13ATSMRO  
149A7234-14ATSMRO

### OEM PART NUMBER

149A7234-1  
149A7234-13  
149A7234-14

### TECHNICAL SPECIFICATIONS

- FAA PMA PQ5315NM, Supplement 106
- Equivalent in fit, form and function to OEM part

### AIRCRAFT APPLICATION

Boeing 737-600Series/700 Series/700C Series/  
800 Series/900 Series/900ER Series/  
8/9/8200

# 52: DOORS

## DOOR ASSEMBLY - HIGH PRESSURE AIR CONNECT

ATA Chapter: 52-48, 53-40



### PRODUCT DESCRIPTION

Located at STA 540, RBL 14, the Door Assy is a component of the lower wing-to-body fairing skin panel. During maintenance it gives access to connect an external source of compressed air to the Pneumatic Manifold

### ATS PART NUMBER

149A7241-9ATSMRO

### OEM PART NUMBER

149A7241-9

### TECHNICAL SPECIFICATIONS

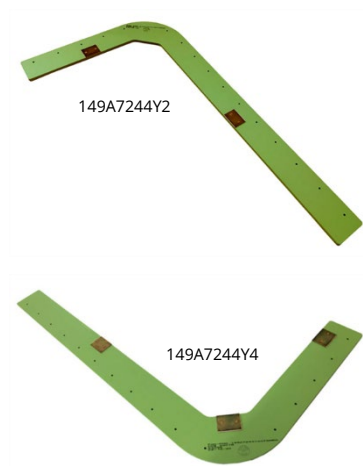
- FAA PMA PQ5315NM, Supplement 96
- Equivalent in fit, form and function to OEM part

### AIRCRAFT APPLICATION

Boeing 737-700/700C/800/900ER/8/9/8200

## DOUBLER ASSEMBLY

ATA Chapter: 52-48



### PRODUCT DESCRIPTION

Doubler Assy provides a stiffening element for the composite Air Conditioning Access Door around the hole for the High Pressure Connect Access Door

### ATS PART NUMBER

149A7244Y2ATSMRO

149A7244Y4ATSMRO

### OEM PART NUMBER

149A7244-2, F8149A7244Y2

149A7244-4

### TECHNICAL SPECIFICATIONS

- FAA PMA PQ5315NM, Supplement 40
- Equivalent in fit, form and function to OEM assembly

### AIRCRAFT APPLICATION

Boeing 737-600/700/700C/800/900

# 52: DOORS

## SPACER – VACUUM LAVATORY, SECTION 46

ATA Chapter: 52-49



### PRODUCT DESCRIPTION

Spacer is located at two places on the hinges of the Waste Service Access Door, which provides the maintainer a source for servicing the waste storage tank

### ATS PART NUMBER

146A7404-5ATSMRO

### OEM PART NUMBER

146A7404-5

### TECHNICAL SPECIFICATIONS

- FAA PMA PQ5315NM, Supplement 68.
- Equivalent in fit, form and function to OEM.
- Material: Aluminum Alloy

### AIRCRAFT APPLICATION

Boeing 737-600/700/800/900/900ER/8/9

## STIFFENER – WATER SERVICE PANEL, AFT CARGO COMPARTMENT

ATA Chapter: 52-49, 53-13



### PRODUCT DESCRIPTION

Located between STA 907 and STA 927 and mounts to the supporting intercostals to provide additional stiffness to the water tank service panel support structure

### ATS PART NUMBER

147A7221Y32ATSMRO

### OEM PART NUMBER

147A7221Y32

### TECHNICAL SPECIFICATIONS

- FAA PMA PQ5315NM, Supplement 69.
- Equivalent in fit, form and function to OEM.
- Material: Aluminum Alloy

### AIRCRAFT APPLICATION

Boeing 737-600/700/700C/800/900/900ER/8/9

## DOOR ASSEMBLY – FWD FAIRING ACCESS

ATA Chapter: 52-49, 53-30, 53-51



### PRODUCT DESCRIPTION

The Door Assembly is located between STA 520 and STA 540 on the belly of the aircraft, and provides access to the ground conditioned air connector

### ATS PART NUMBER

149A7148-23ATSMRO

### OEM PART NUMBER

149A7148-23

### TECHNICAL SPECIFICATIONS

- FAA PMA PQ5315NM, Supplement 85.
- Equivalent in fit, form, and function to OEM assembly

### AIRCRAFT APPLICATION

Boeing 737-700/700C/800/900ER/8/9

# 52: DOORS

## HOLD OPEN STRUT ASSEMBLY

ATA Chapter: 52-49



### PRODUCT DESCRIPTION

A strut for holding the Aft Fairing Brake Accumulator Door open during maintenance procedures

### ATS PART NUMBER

149A7564-2ATSMRO

### OEM PART NUMBER

149A7564-2

### TECHNICAL SPECIFICATIONS

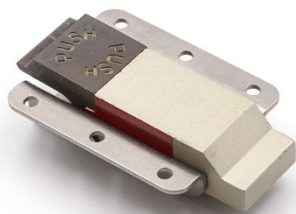
- FAA PMA PQ5315NM, Supplement 30
- Equivalent in fit, form and function to OEM assembly
- Attaches to the Aft Fairing Brake Accumulator Door
- Stows securely against the inner surface of the door for flight

### AIRCRAFT APPLICATION

Boeing 737-600/700/700C/800/900/900ER/8

## FORWARD FAIRING ACCESS DOOR LATCH ASSEMBLY

ATA Chapter: 52-49



### PRODUCT DESCRIPTION

Allow aircraft maintenance personnel to open and/or secure FWD Fairing Access Door

### ATS PART NUMBER

H498-9-163-200ATS

### OEM PART NUMBER

H498-9-163-200

### TECHNICAL SPECIFICATIONS

- FAA PMA PQ5315NM, Supplement 13 and 17
- Equivalent in fit, form and function to OEM assembly
- Red handle paint indicates an improperly-secured latch

### AIRCRAFT APPLICATION

Boeing 737-600/700/700C/800/900/900ER/8/9

# 53: FUSELAGE

## INTERCOSTAL – AFT CARGO BAY

ATA Chapter: 53-00



### PRODUCT DESCRIPTION

Located between STA 827 and STA 847 in the Aft Cargo Bay. Primarily acts as a stiffening element to protect the surrounding structure from incidental damage

### ATS PART NUMBER

146A7505U8ATSMRO

### OEM PART NUMBER

146A7505-8

### TECHNICAL SPECIFICATIONS

- FAA PMA PQ5315NM, Supplement 73.
- Equivalent in fit, form and function to OEM.
- Material: Aluminum Alloy

### AIRCRAFT APPLICATION

Boeing 737-600/700/700C/900/900ER

## WEB – AFT CARGO DOOR SURROUND

ATA Chapter: 53-00



### PRODUCT DESCRIPTION

Sits under the Scuff Plate of the Aft Cargo Door. Primarily acts as a lower frame of the door and provides an attach point for the Scuff Plate, which protects the underlying structure from environmental effects

### ATS PART NUMBER

146A8123U25ATSMRO

### OEM PART NUMBER

146A8123-25  
146A8123U25

### TECHNICAL SPECIFICATIONS

- FAA PMA PQ5315NM, Supplement 73.
- Equivalent in fit, form and function to OEM.
- Material: Aluminum Alloy

### AIRCRAFT APPLICATION

Boeing 737-700/700C/800/900ER/8/9

## ANGLE – AFT CARGO DOOR SURROUND

ATA Chapter: 53-00



### PRODUCT DESCRIPTION

Installs onto the Aft Cargo Door Sill Web to increase structural stability and stiffness of the assembly. Also provides additional attach points for the Scuff Plate

### ATS PART NUMBER

146A8125U53ATSMRO

### OEM PART NUMBER

146A8125-53

### TECHNICAL SPECIFICATIONS

- FAA PMA PQ5315NM, Supplement 73.
- Equivalent in fit, form and function to OEM.
- Material: Aluminum Alloy

### AIRCRAFT APPLICATION

Boeing 737-600/700/700C/800/900/900ER/8/9



# 53: FUSELAGE

## SHIELD ASSEMBLY – AFT CARGO DOOR SURROUND

ATA Chapter: 53-00



### PRODUCT DESCRIPTION

Installs above the Aft Cargo Door Sill Web/Angle. Primarily acts as a continuation of the Scuff Plate to provide additional environmental protection and to distribute cargo/personnel loading to avoid incidental flange bending of the underlying floor structure

### ATS PART NUMBER

146A8127U5ATSMRO

### OEM PART NUMBER

146A8127-5  
146A8127Y5

### TECHNICAL SPECIFICATIONS

- FAA PMA PQ5315NM, Supplement 73.
- Equivalent in fit, form and function to OEM.
- Material: Aluminum Alloy

### AIRCRAFT APPLICATION

Boeing 737-600/700/700C/800/900

## STRAP – AFT CARGO DOOR SURROUND

ATA Chapter: 53-00



### PRODUCT DESCRIPTION

Component of the Aft Cargo Door larger Lower Main Sill Assembly and interfaces between the Scuff Plate and Sill Web. Primarily acts as a stiffening element along the Sill web

### ATS PART NUMBER

146A8128U14ATSMRO

### OEM PART NUMBER

146A8128-14  
146A8128U14  
146A8128Y14

### TECHNICAL SPECIFICATIONS

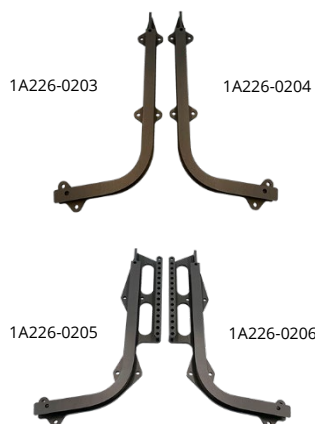
- FAA PMA PQ5315NM, Supplement 73.
- Equivalent in fit, form and function to OEM.
- Material: Aluminum Alloy

### AIRCRAFT APPLICATION

Boeing 737-600/700/700C/800/900/900ER/8/9

## FLIGHT DECK SEAT TRACKS

ATA Chapter: 53-10, 25-11



### PRODUCT DESCRIPTION

Shorter lead time and less cost replacement parts for flight deck seat tracks as compared to OEM components

### ATS PART NUMBER

1A226-0201ATSMRO / 1A226-0202ATSMRO  
1A226-0203ATSMRO / 1A226-0204ATSMRO  
1A226-0205ATSMRO / 1A226-0206ATSMRO  
1A296-0339ATSMRO / 1A296-0340ATSMRO

### OEM PART NUMBER

1A226-0201 / 1A226-0202  
1A226-0203 / 1A226-0204  
1A226-0205 / 1A226-0206  
1A296-0339 / 1A296-0340

### TECHNICAL SPECIFICATIONS

- FAA PMA PQ5315NM, Supplement 59
- Equivalent in fit, form and function to OEM

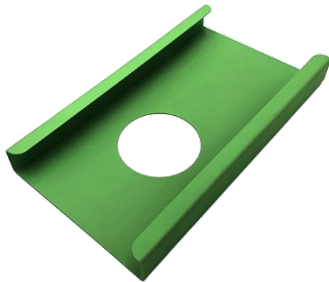
### AIRCRAFT APPLICATION

Boeing 737-600/700/700C/800/900/900ER/8/9

# 53: FUSELAGE

## CHANNEL - FLIGHT DECK

ATA Chapter: 53-10



### PRODUCT DESCRIPTION

As a component of the flight compartment floor step assembly, the Channel provides support and attachment for a removable access panel which permits access for internal zonal inspections

### ATS PART NUMBER

141A5211U1ATSMRO

### OEM PART NUMBER

141A5211U1

### TECHNICAL SPECIFICATIONS

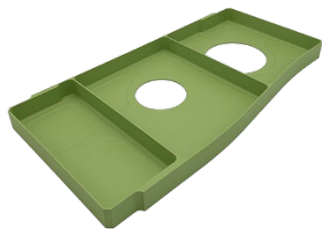
- FAA PMA PQ5315NM, Supplement 78.
- Equivalent in fit, form and function to OEM.
- Material: Aluminum Alloy

### AIRCRAFT APPLICATION

Boeing 737-600/700/700C/800/900/900ER

## INTERCOSTAL

ATA Chapter: 53-10



### PRODUCT DESCRIPTION

The PMA article is located at BL 0, spanning the STA 344 to STA 360 floor beams the passenger cabin. It transfers loads into the floor beams and provides attachment and support for floor panels

### ATS PART NUMBER

141A5410U23ATSMRO

### OEM PART NUMBER

141A5410U23

### TECHNICAL SPECIFICATIONS

- FAA PMA PQ5315NM, Supplement 105
- Equivalent in fit, form and function to OEM part

### AIRCRAFT APPLICATION

Boeing 737-600/700/700C/800/900/900ER

## INTERCOSTAL - SECTION 41

ATA Chapter: 53-10



### PRODUCT DESCRIPTION

The Intercoastals are located in the Section 41 cabin floor and function to stiffen the adjacent floor structure and support floor panels

### ATS PART NUMBER

141A5410U139ATSMRO  
141A5410U141ATSMRO

### OEM PART NUMBER

141A5410U139  
141A5410U141

### TECHNICAL SPECIFICATIONS

- FAA PMA PQ5315NM, Supplement 101
- Equivalent in fit, form and function to OEM part

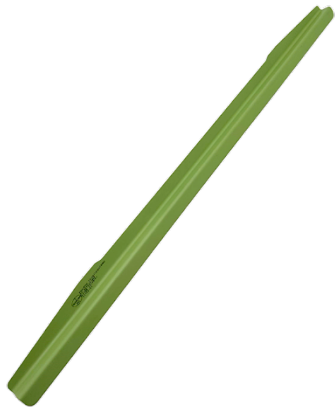
### AIRCRAFT APPLICATION

Boeing 737-600/700/700C/800/900/900ER/  
8/9/8200

# 53: FUSELAGE

## CHORD – ZEE, FORWARD ENTRY DOOR SILL

ATA Chapter: 53-10



### PRODUCT DESCRIPTION

Formed stiffener installed on the Lower Main Sill web of Forward Entry Door, as component of the Section 41 Door Surround Structure. The Zee Chord primarily function as a support and attachment point for the Center Scuff Plate with Lower Sill web

### ATS PART NUMBER

141A8112U2ATSMRO

### OEM PART NUMBER

141A8112-2

### TECHNICAL SPECIFICATIONS

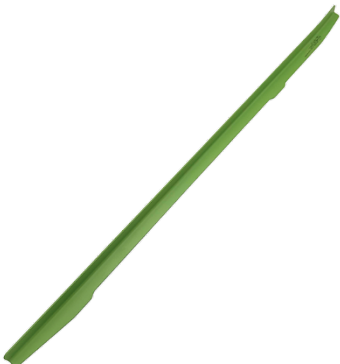
- FAA PMA PQ5315NM, Supplement 62.
- Equivalent in fit, form and function to OEM.
- Material: Aluminum Alloy

### AIRCRAFT APPLICATION

Boeing 737-600/700/700C/800/900/900ER/8/9

## ANGLE – FORWARD ENTRY DOOR SILL

ATA Chapter: 53-10



### PRODUCT DESCRIPTION

Formed stiffener installed on the Lower Main Sill web of Forward Entry Door, as component of the Section 41 Door Surround Structure. The Zee Chord primarily function as a support and attachment point for the Center Scuff Plate with Lower Sill web

### ATS PART NUMBER

141A8112U20ATSMRO

### OEM PART NUMBER

141A8112-20

### TECHNICAL SPECIFICATIONS

- FAA PMA PQ5315NM, Supplement 62.
- Equivalent in fit, form and function to OEM.
- Material: Aluminum Alloy

### AIRCRAFT APPLICATION

Boeing 737-600/700/700C/800/900/900ER/8/9

## ANGLE – FORWARD ENTRY DOOR SILL

ATA Chapter: 53-10

### PRODUCT DESCRIPTION

Formed stiffener installed on the Lower Main Sill web of Galley Door, as component of the Section 41 Door Surround Structure. The Zee Chord primarily function as a support and attachment point for the Center Scuff Plate with Lower Sill web

### ATS PART NUMBER

141A8312U5ATSMRO

### OEM PART NUMBER

141A8312-5  
141A8312Y5

### TECHNICAL SPECIFICATIONS

- FAA PMA PQ5315NM, Supplement 62.
- Equivalent in fit, form and function to OEM.
- Material: Aluminum Alloy

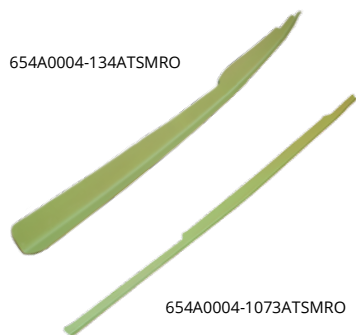
### AIRCRAFT APPLICATION

Boeing 737-600/700/700C/800/900/900ER/8/9

# 53: FUSELAGE

## INNER CHORD – GALLERY DOOR MOPSILL

ATA Chapter: 53-10



### PRODUCT DESCRIPTION

Components of Section 41 Door Surround Structure

### ATS PART NUMBER

654A0004-134ATSMRO  
654A0004-1073ATSMRO

### OEM PART NUMBER

654A0004-134  
654A0004-1073

### TECHNICAL SPECIFICATIONS

- FAA PMA PQ5315NM, Supplement 54
- Equivalent in fit, form and function to OEM part
- Current OEM ICA information is applicable to parts

### AIRCRAFT APPLICATION

Boeing 737-600/700/800/900/900ER/8/9

## PANEL, REMOVABLE – FLIGHT DECK

ATA Chapter: 53-10



### PRODUCT DESCRIPTION

As a component of the flight compartment floor, the removable panel permits access for internal zonal inspections. In addition, the panel acts as a floor web in the crew area

### ATS PART NUMBER

141A5133U15ATSMRO

### OEM PART NUMBER

141A5133U15

### TECHNICAL SPECIFICATIONS

- FAA PMA PQ5315NM, Supplement 78.
- Equivalent in fit, form and function to OEM.
- Material: Aluminum Alloy

### AIRCRAFT APPLICATION

Boeing 737-600/700/700C/800/900/900ER/8/9

## INTERCOSTAL, LAV A SUPPORT

ATA Chapter: 53-10



### PRODUCT DESCRIPTION

Spans between floor beams to stiffen the floor structure. Supports one of four lavatory A floor fitting attach points

### ATS PART NUMBER

141A5690U1ATSMRO

### OEM PART NUMBER

141A5690-1  
141A5690U1  
141A5690Y1

### TECHNICAL SPECIFICATIONS

- FAA PMA PQ5315NM, Supplement 80
- Equivalent in fit, form and function to OEM part

### AIRCRAFT APPLICATION

Boeing 737-600/700/700C/800/900/900ER

# 53: FUSELAGE

## GUIDE TRACK ASSEMBLY – FWD ENTRY DOOR, STA 348.2

ATA Chapter: 53-11, 52-11



### PRODUCT DESCRIPTION

Interfaces with the fwd entry door-side ball guide to ensure door is properly located during open/close

### ATS PART NUMBER

141A6206-2ATSMRO

### OEM PART NUMBER

141A6206-2

### TECHNICAL SPECIFICATIONS

- FAA PMA PQ5315NM, Supplement 81
- Equivalent in fit, form and function to OEM assembly

### AIRCRAFT APPLICATION

Boeing 737-600/700/800/900/900ER/8/9

## BRACKET ASSEMBLY – STA 727 BULKHEAD

ATA Chapter: 53-11



### PRODUCT DESCRIPTION

Located on the STA 727 Wheel Well Bulkhead and provides support for the 453A1210-( ) Shroud

### ATS PART NUMBER

144A9401U20ATSMRO

### OEM PART NUMBER

144A9401U20

### TECHNICAL SPECIFICATIONS

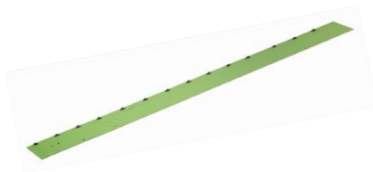
- FAA PMA PQ5315NM, Supplement 78.
- Equivalent in fit, form and function to OEM.
- Material: Clad Aluminum Sheet

### AIRCRAFT APPLICATION

Boeing 737-600/700/700C/800/900/900ER/8/9

## AFT REVEAL ASSEMBLY

ATA Chapter: 53-11



### PRODUCT DESCRIPTION

Component of the Aft Cargo Door Surround Structure. Primary function is to hold a section of the lining of the cargo compartment in place

### ATS PART NUMBER

146A9403-237ATSMRO

### OEM PART NUMBER

146A9403-237

### TECHNICAL SPECIFICATIONS

- FAA PMA PQ5315NM, Supplement 15
- Equivalent in fit, form and function to OEM assembly
- Aluminum material

### AIRCRAFT APPLICATION

Boeing 737-600/700/700C/800/900/900ER/8/9

# 53: FUSELAGE

## FITTING – AFT DOOR, STA 992.8

ATA Chapter: 53-11, 52-11



### PRODUCT DESCRIPTION

Interfaces with the aft entry and galley door-side ball guide to ensure door is properly located during open/close

### ATS PART NUMBER

654A0004-24ATSMRO

### OEM PART NUMBER

654A0004-24  
147A6158-1

### TECHNICAL SPECIFICATIONS

- FAA PMA PQ5315NM, Supplement 81
- Equivalent in fit, form and function to OEM part

### AIRCRAFT APPLICATION

Boeing 737-600/700/700C/800/900/900ER/8/9

## FITTING – GALLEY DOOR, STA 328

ATA Chapter: 53-11, 52-11



### PRODUCT DESCRIPTION

Interfaces with the fwd galley door-side ball guide to ensure door is properly located during open/close

### ATS PART NUMBER

654A0004-28ATSMRO

### OEM PART NUMBER

654A0004-28  
141A6557-1

### TECHNICAL SPECIFICATIONS

- FAA PMA PQ5315NM, Supplement 81
- Equivalent in fit, form and function to OEM part

### AIRCRAFT APPLICATION

Boeing 737-600/700/700C/800/900/900ER/8/9

## FILLER – STA 796, AFT CARGO DOOR

ATA Chapter: 53-13, 51-00



### PRODUCT DESCRIPTION

Function as a ramp in the upper corners of the scuff plates to the doorway to give a smooth transition for the door seal

### ATS PART NUMBER

146A8344-1ATSMRO

### OEM PART NUMBER

146A8344-1

### TECHNICAL SPECIFICATIONS

- FAA PMA PQ5315NM, Supplement 65
- Equivalent in fit, form and function to OEM part

### AIRCRAFT APPLICATION

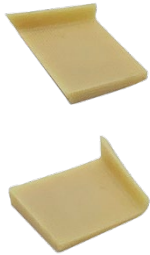
Boeing 737-600/700/700C/800/900/900ER/8/9



# 53: FUSELAGE

## FILLER – STA 846, AFT CARGO DOOR

ATA Chapter: 53-13, 51-00



### PRODUCT DESCRIPTION

Function as a ramp in the upper corners of the scuff plates to the doorway to give a smooth transition for the door seal

### ATS PART NUMBER

146A8344-2ATSMRO

### OEM PART NUMBER

146A8344-2

### TECHNICAL SPECIFICATIONS

- FAA PMA PQ5315NM, Supplement 65
- Equivalent in fit, form and function to OEM part

### AIRCRAFT APPLICATION

Boeing 737-600/700/700C/800/900/900ER/8/9

## STIFFENER – WATER SERVICE PANEL, AFT CARGO COMPARTMENT

ATA Chapter: 53-13, 52-49



### PRODUCT DESCRIPTION

Located between STA 907 and STA 927 and mounts to the supporting intercostals to provide additional stiffness to the water tank service panel support structure.

### ATS PART NUMBER

147A7221Y32ATSMRO

### OEM PART NUMBER

147A7221Y32

### TECHNICAL SPECIFICATIONS

- FAA PMA PQ5315NM, Supplement 69.
- Equivalent in fit, form and function to OEM.
- Material: Aluminum Alloy

### AIRCRAFT APPLICATION

Boeing 737-600/700/700C/800/900/900ER/8/9

## ANGLE, FLOOR BOARD & CHORD – UPPER

ATA Chapter: 53-30



143A5410-170ATSMRO

143A5410U174ATSMRO

### PRODUCT DESCRIPTION

The Angle is located in the Section 43 main deck floor structure, and stiffens the adjacent floor structure while providing a means of attachment for the floor panels.

The Upper Chord is located in the Section 43 main deck floor structure, and stiffens the adjacent floor structure while providing a means of attachment for the floor panels

### ATS PART NUMBER

#### Angle, Floor Board

143A5410-170ATSMRO

#### Chord – Upper

143A5410U174ATSMRO

### OEM PART NUMBER

143A5410-170

143A5410U174

### TECHNICAL SPECIFICATIONS

- FAA PMA PQ5315NM, Supplement 107
- Equivalent in fit, form and function to OEM part

### AIRCRAFT APPLICATION

Boeing 737-700/800/8

# 53: FUSELAGE

## SIDEPLATE CHANNEL ASSEMBLY – CARGO FLOOR SUPPORT, SECTION 43

ATA Chapter: 53-30



### PRODUCT DESCRIPTION

Component of the Forward Cargo Compartment floor structure. Primarily provides a means of retention for the cargo compartment floor and sidewall panels

### ATS PART NUMBER

143A7501U186ATSMRO

### OEM PART NUMBER

143A7501U186

### TECHNICAL SPECIFICATIONS

- FAA PMA PQ5315NM, Supplement 70.
- Equivalent in fit, form and function to OEM.
- Material: Aluminum Alloy

### AIRCRAFT APPLICATION

Boeing 737-700/700C

## CLIP – CARGO FLOOR

ATA Chapter: 53-30, 53-42



### PRODUCT DESCRIPTION

The Clips are a component of the Section 43 Cargo Floor Support Installation and attach outboard baffle assemblies to various frames

### ATS PART NUMBER

143A7502U159ATSMRO  
143A7502U160ATSMRO

### OEM PART NUMBER

143A7502U159  
143A7502U160

### TECHNICAL SPECIFICATIONS

- FAA PMA PQ5315NM, Supplement 90
- Equivalent in fit, form, and function to OEM assembly

### AIRCRAFT APPLICATION

Boeing 737-600/700/700C/800/900ER/8/9/8200

## BAFFLE ASSEMBLY – FORWARD CARGO FLOOR

ATA Chapter: 53-30



### PRODUCT DESCRIPTION

Components of the forward cargo compartment floor structure. Primary function is to add stiffness to the sideplate channels between the fuselage frames and provide a means of retention for the cargo compartment sidewall liners

### ATS PART NUMBER

143A7510-9ATSMRO

### OEM PART NUMBER

143A7510-9

### TECHNICAL SPECIFICATIONS

- FAA PMA PQ5315NM, Supplement 76.
- Equivalent in fit, form and function to OEM.
- Material: Aluminum

### AIRCRAFT APPLICATION

Boeing 737-600/700/700C/800/900/900ER/8/9

# 53: FUSELAGE

## BAFFLE ASSEMBLY – FORWARD CARGO FLOOR

ATA Chapter: 53-30



### PRODUCT DESCRIPTION

Components of the forward cargo compartment floor structure. Primary function is to add stiffness to the sideplate channels between the fuselage frames and provide a means of retention for the cargo compartment sidewall liners.

### ATS PART NUMBER

143A7510-15ATSMRO

### OEM PART NUMBER

143A7510-15

### TECHNICAL SPECIFICATIONS

- FAA PMA PQ5315NM, Supplement 76.
- Equivalent in fit, form and function to OEM.
- Material: Aluminum

### AIRCRAFT APPLICATION

Boeing 737-700/700C

## BAFFLE ASSEMBLY – FORWARD CARGO FLOOR

ATA Chapter: 53-30



### PRODUCT DESCRIPTION

Components of the forward cargo compartment floor structure. Primary function is to add stiffness to the sideplate channels between the fuselage frames and provide a means of retention for the cargo compartment sidewall liners.

### ATS PART NUMBER

143A7510-21ATSMRO

### OEM PART NUMBER

143A7510-21

### TECHNICAL SPECIFICATIONS

- FAA PMA PQ5315NM, Supplement 76.
- Equivalent in fit, form and function to OEM.
- Material: Aluminum

### AIRCRAFT APPLICATION

Boeing 737-800/900/900ER/8/9

## BAFFLE ASSEMBLY – FORWARD CARGO FLOOR

ATA Chapter: 53-30



### PRODUCT DESCRIPTION

Components of the forward cargo compartment floor structure. Primary function is to add stiffness to the sideplate channels between the fuselage frames and provide a means of retention for the cargo compartment sidewall liners.

### ATS PART NUMBER

143A7510-22ATSMRO

### OEM PART NUMBER

143A7510-22

### TECHNICAL SPECIFICATIONS

- FAA PMA PQ5315NM, Supplement 76.
- Equivalent in fit, form and function to OEM.
- Material: Aluminum

### AIRCRAFT APPLICATION

Boeing 737-800/900/900ER/8/9

# 53: FUSELAGE

## SHIELD ASSEMBLY

ATA Chapter: 53-30



### PRODUCT DESCRIPTION

Attachment points for floor and sidewall panels of the forward cargo bay

### ATS PART NUMBER

143A8126U21ATSMRO

### OEM PART NUMBER

143A8126U21

### TECHNICAL SPECIFICATIONS

- FAA PMA PQ5315NM, Supplement 34
- Equivalent in fit, form and function to OEM assembly
- 143A8126U21ATSMRO installs forward of the forward cargo bay door

### AIRCRAFT APPLICATION

Boeing 737-700/700C/800/900/900ER/8/9

## SHIELD ASSEMBLY

ATA Chapter: 53-30



### PRODUCT DESCRIPTION

Attachment points for floor and sidewall panels of the forward cargo bay

### ATS PART NUMBER

143A8126U31ATSMRO

### OEM PART NUMBER

143A8126U31

### TECHNICAL SPECIFICATIONS

- FAA PMA PQ5315NM, Supplement 34
- Equivalent in fit, form and function to OEM assembly
- 143A8126U31ATSMRO installs aft of the forward cargo bay door

### AIRCRAFT APPLICATION

Boeing 737-700/700C

## SHIELD ASSEMBLY

ATA Chapter: 53-30

### PRODUCT DESCRIPTION

The Shield Assy provides a means of retention for the cargo compartment floor panels and sidewall liners

### ATS PART NUMBER

143A8126Y38ATSMRO

### OEM PART NUMBER

143A8126-38

### TECHNICAL SPECIFICATIONS

- FAA PMA PQ5315NM, Supplement 91
- Equivalent in fit, form, and function to OEM assembly

### AIRCRAFT APPLICATION

Boeing 737-800/900ER/8/9/8200

# 53: FUSELAGE

## SCUFF PLATE – FORWARD CARGO DOOR

ATA Chapter: 53-30



### PRODUCT DESCRIPTION

Components of the cargo doorway lower main sill. Primarily designed to resist impact damage from cargo and protect underlying structure from environmental effects.

### ATS PART NUMBER

143A8333-8ATSMRO

### OEM PART NUMBER

143A8333-8

### TECHNICAL SPECIFICATIONS

- FAA PMA PQ5315NM, Supplement 75.
- Equivalent in fit, form and function to OEM.
- Material: Titanium

### AIRCRAFT APPLICATION

Boeing 737-600/700/700C/800/900/900ER/8/9

## AFT REVEAL ASSEMBLY – FORWARD CARGO DOOR SURROUND

ATA Chapter: 53-30



### PRODUCT DESCRIPTION

Consists of a flat sheet of aluminum with nutplates and a strip of Skyflex tape to provide a seal at the frame inner chord installation. Primarily acts as a scuff plate to protect the aft edge of the Forward Cargo Door Surround from cargo damage.

### ATS PART NUMBER

143A9403U188ATSMRO

### OEM PART NUMBER

143A9403-188  
143A9403U188  
143A9403Y188

### TECHNICAL SPECIFICATIONS

- FAA PMA PQ5315NM, Supplement 72.
- Equivalent in fit, form and function to OEM.
- Material: Aluminum Alloy

### AIRCRAFT APPLICATION

Boeing 737-600/700/700C/800/900/900ER/8/9

## CLIP – BULKHEAD SUPPORT

ATA Chapter: 53-30



### PRODUCT DESCRIPTION

The PMA article is a component of the Fwd Cargo Compartment, Aft Bulkhead structure. It functions to support the Aft Bulkhead structure by connecting the frame of the Bulkhead to the left and right Rail Assys. These in turn provide a means for the Bulkhead Panel attachment

### ATS PART NUMBER

143A9485U21ATSMRO

### OEM PART NUMBER

143A9485U21

### TECHNICAL SPECIFICATIONS

- FAA PMA PQ5315NM, Supplement 105
- Equivalent in fit, form and function to OEM part

### AIRCRAFT APPLICATION

Boeing 737-700/800/900ER/8/9

# 53: FUSELAGE

## DOOR ASSEMBLY – FWD FAIRING ACCESS

ATA Chapter: 53-30, 52-49, 53-51



### PRODUCT DESCRIPTION

The Door Assembly is located between STA 520 and STA 540 on the belly of the aircraft, and provides access to the ground conditioned air connector.

### ATS PART NUMBER

149A7148-23ATSMRO

### OEM PART NUMBER

149A7148-23

### TECHNICAL SPECIFICATIONS

- FAA PMA PQ5315NM, Supplement 85.
- Equivalent in fit, form, and function to OEM assembly

### AIRCRAFT APPLICATION

Boeing 737-700/700C/800/900ER/8/9

## CAPSTRIP – FWD CARGO FLOOR

ATA Chapter: 53-30



### PRODUCT DESCRIPTION

Forward cargo bay floor-to-sidewall capstrips

### ATS PART NUMBER

453A1611-6ATSMRO  
453A1611-9ATSMRO  
453A1611-10ATSMRO  
453A1611-11ATSMRO  
453A1611-12ATSMRO

### OEM PART NUMBER

453A1611-6  
453A1611-9  
453A1611-10  
453A1611-11  
453A1611-12

### TECHNICAL SPECIFICATIONS

- FAA PMA PQ5315NM, Supplement 95
- Equivalent in fit, form and function to OEM part

### AIRCRAFT APPLICATION

#### 453A1611-6ATSMRO:

Boeing 737-700/800/900/900ER

#### 453A1611-9ATSMRO:

Boeing 737-600/700/700C/800/900/900ER/  
8/9/8200

#### 453A1611-10ATSMRO:

Boeing 737-700/700C

#### 453A1611-11ATSMRO:

Boeing 737-700/700C

#### 453A1611-12ATSMRO:

Boeing 737-700/700C



# 53: FUSELAGE

## CAPSTRIP

ATA Chapter: 53-30, 25-52



### PRODUCT DESCRIPTION

The Capstrips are located in the Fwd Cargo Compartment and fasten to floor panels and sidewall liners. They function to close out gaps, assisting in fire containment and preventing debris accumulation below the floor panels

### ATS PART NUMBER

453A1611-14ATSMRO  
453A1611-16ATSMRO  
453A1611-17ATSMRO  
453A1611-30ATSMRO  
453A1611-31ATSMRO

### OEM PART NUMBER

453A1611-14  
453A1611-16  
453A1611-17  
453A1611-30  
453A1611-31

### TECHNICAL SPECIFICATIONS

- FAA PMA PQ5315NM, Supplement 99
- Equivalent in fit, form and function to OEM part

### AIRCRAFT APPLICATION

**453A1611-14ATSMRO:**  
Boeing 737-800/900/900ER/8/9

**453A1611-16ATSMRO:**  
Boeing 737-800/8

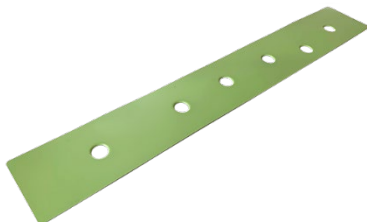
**453A1611-17ATSMRO:**  
Boeing 737-800/8

**453A1611-30ATSMRO:**  
Boeing 737-800/900/900ER/8/9

**453A1611-31ATSMRO:**  
Boeing 737-800/900/900ER/8/9

## WEB - FWD CARGO DOOR SILL

ATA Chapter: 53-30



### PRODUCT DESCRIPTION

Component of Section 43 Door Surround Structure

### ATS PART NUMBER

654A0003-58ATSMRO

### OEM PART NUMBER

654A0003-58

### TECHNICAL SPECIFICATIONS

- FAA PMA PQ5315NM, Supplement 55
- Equivalent in fit, form and function to OEM part
- Current OEM ICA information is applicable to parts

### AIRCRAFT APPLICATION

Boeing 737-600/700/700C/800/900/900ER/8/9

# 53: FUSELAGE

## SEAT TRACK – SECTIONS 43

ATA Chapter: 53-30



### PRODUCT DESCRIPTION

Provides a means of attachment for passenger seats

### ATS PART NUMBER

654A0004-77ATSMRO  
143A5310-54ATSMRO

### OEM PART NUMBER

654A0004-77  
143A5310-54

### TECHNICAL SPECIFICATIONS

- FAA PMA PQ5315NM, Supplement 55
- Equivalent in fit, form and function to OEM part
- Current OEM ICA information is applicable to parts

### AIRCRAFT APPLICATION

Boeing 737-700

## SEAT TRACK – SECTIONS 43

ATA Chapter: 53-30



### PRODUCT DESCRIPTION

Provides a means of attachment for passenger seats

### ATS PART NUMBER

654A0004-776ATSMRO  
143A5310-52ATSMRO  
143A5310-109ATSMRO

### OEM PART NUMBER

654A0004-776, 143A5310-51  
143A5310-52  
143A5310-109

### TECHNICAL SPECIFICATIONS

- FAA PMA PQ5315NM, Supplement 55
- Equivalent in fit, form and function to OEM part
- Current OEM ICA information is applicable to parts

### AIRCRAFT APPLICATION

Boeing 737-700/800/900/900ER/8/9

# 53: FUSELAGE

## RAIL ASSEMBLIES

ATA Chapter: 53-35



### PRODUCT DESCRIPTION

The Rail Assemblies are located in the Forward Cargo Bay and provide support for the STA 500D Bulkhead. In addition, the Rails act as a fire barrier and close out the cargo bay from the wingbox

### ATS PART NUMBER

143A9485U30ATSMRO  
143A9485U34ATSMRO  
143A9485U35ATSMRO

### OEM PART NUMBER

143A9485U30  
143A9485U34  
143A9485U35

### TECHNICAL SPECIFICATIONS

- FAA PMA PQ5315NM, Supplement 86
- Equivalent in fit, form and function to OEM part

### AIRCRAFT APPLICATION

#### 143A9485U30ATSMRO:

Boeing 737-600/700/700C

#### 143A9485U34ATSMRO &

#### 143A9485U35ATSMRO:

Boeing 737-600/700/700C/800/900/900ER/8/9



## SEAT TRACK – SECTIONS 44

ATA Chapter: 53-40



### PRODUCT DESCRIPTION

Provides a means of attachment for passenger seats

### ATS PART NUMBER

144A5350-1ATSMRO  
144A5350-3ATSMRO

### OEM PART NUMBER

144A5350-1  
144A5350-3

### TECHNICAL SPECIFICATIONS

- FAA PMA PQ5315NM, Supplement 47
- Equivalent in fit, form and function to OEM part
- Current OEM ICA information is applicable to parts

### AIRCRAFT APPLICATION

#### 144A5350-1ATSMRO:

Boeing 737-600/700/700C/800/900/900ER/8/9

#### 144A5350-3ATSMRO:

Boeing 737-600/700

# 53: FUSELAGE

## ISOLATOR - SIDEWALL

ATA Chapter: 53-40



### PRODUCT DESCRIPTION

Isolators function as an attachment point for the sidewall panels.

### ATS PART NUMBER

144A9451U3ATSMRO  
144A9451U4ATSMRO  
144A9451U5ATSMRO

### OEM PART NUMBER

144A9451-3, 144A9451Y3, 144A9451U3  
144A9451-4, 144A9451Y4, 144A9451U4  
144A9451-5, 144A9451Y5, 144A9451U5

### TECHNICAL SPECIFICATIONS

- FAA PMA PQ5315NM, Supplement 51
- Equivalent in fit, form and function to OEM part
- Current OEM ICA information is applicable to parts

### AIRCRAFT APPLICATION

Boeing 737-600/700/700C/800/900/900ER/8/9

## FRAME – ECS SUPPORT

ATA Chapter: 53-40



### PRODUCT DESCRIPTION

ECS Support Frame supports the RAM Air Exhaust Duct Panel just aft of the main LH and RH ECS bay doors

### ATS PART NUMBER

149A7214-19ATSMRO

### OEM PART NUMBER

149A7214-19

### TECHNICAL SPECIFICATIONS

- FAA PMA PQ5315NM, Supplement 58
- Equivalent in fit, form and function to OEM part
- 149A7214-20ATSMRO opposite to 149A7214-19ATSMRO

### AIRCRAFT APPLICATION

Boeing 737-700/700C/800/900ER

# 53: FUSELAGE

## FRAME – ECS SUPPORT

ATA Chapter: 53-40



### PRODUCT DESCRIPTION

ECS Support Frame supports the RAM Air Exhaust Duct Panel just aft of the main LH and RH ECS bay doors

### ATS PART NUMBER

149A7214-20ATSMRO

### OEM PART NUMBER

149A7214-20

### TECHNICAL SPECIFICATIONS

- FAA PMA PQ5315NM, Supplement 58
- Equivalent in fit, form and function to OEM part
- 149A7214-20ATSMRO opposite to 149A7214-19ATSMRO

### AIRCRAFT APPLICATION

Boeing 737-700/700C/800/900ER

## DOOR ASSEMBLY – HIGH PRESSURE AIR CONNECT

ATA Chapter: 53-40, 52-48



### PRODUCT DESCRIPTION

Located at STA 540, RBL 14, the Door Assy is a component of the lower wing-to-body fairing skin panel. During maintenance it gives access to connect an external source of compressed air to the Pneumatic Manifold

### ATS PART NUMBER

149A7241-9ATSMRO

### OEM PART NUMBER

149A7241-9

### TECHNICAL SPECIFICATIONS

- FAA PMA PQ5315NM, Supplement 96
- Equivalent in fit, form and function to OEM part

### AIRCRAFT APPLICATION

Boeing 737-700/700C/800/900ER/8/9/8200

# 53: FUSELAGE

## TIE DOWN ASSEMBLY – LH FWD ENTRY DOOR

ATA Chapter: 53-42, 25-66



141A5220-2ATSMRO, STA 312



141A5220-4ATSMRO, STA 344

### PRODUCT DESCRIPTION

Attached to the floor structure located at the LH Fwd Entry Door to secure the Escape Slide during emergency evacuation

### ATS PART NUMBER

141A5220-2ATSMRO  
141A5220-4ATSMRO

### OEM PART NUMBER

141A5220-2  
141A5220-4

### TECHNICAL SPECIFICATIONS

- FAA PMA PQ5315NM, Supplement 53
- Equivalent in fit, form and function to OEM part
- Current OEM ICA information is applicable to parts

### AIRCRAFT APPLICATION

#### 141A5220-2ATSMRO:

Boeing 737-600/700/700C/800/900/900ER/8/9

#### 141A5220-4ATSMRO:

Boeing 737-600/700/800/900/900ER/8/9

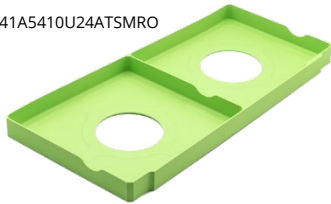


# 53: FUSELAGE

## INTERCOSTAL – FLOOR STABILIZER

ATA Chapter: 53-42

141A5410U24ATSMRO



### PRODUCT DESCRIPTION

Support the floor panels

### ATS PART NUMBER

141A5410U24ATSMRO  
141A5410U25ATSMRO  
141A5410U146ATSMRO  
141A5410U148ATSMRO  
141A5410U150ATSMRO

### OEM PART NUMBER

141A5410U24  
141A5410U25  
141A5410U146  
141A5410U148  
141A5410U150

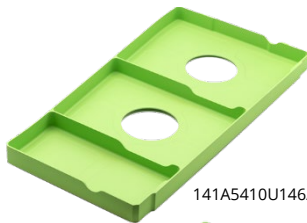
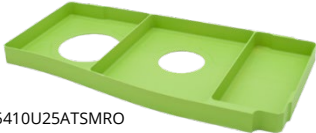
### TECHNICAL SPECIFICATIONS

- FAA PMA PQ5315NM, Supplement 43
- Equivalent in fit, form and function to OEM parts
- Current OEM ICA information is applicable to parts

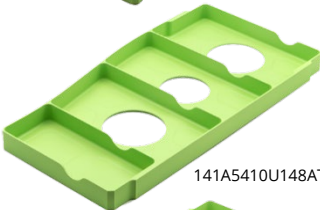
### AIRCRAFT APPLICATION

Boeing 737-600/700/800/900/900ER/8/9

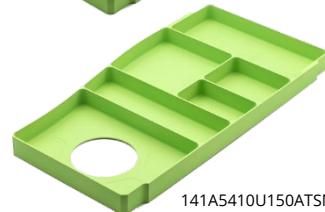
141A5410U25ATSMRO



141A5410U146ATSMRO



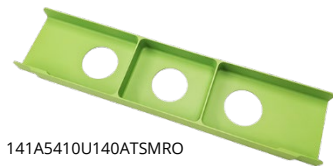
141A5410U148ATSMRO



141A5410U150ATSMRO

## INTERCOSTAL – FLOOR STABILIZER

ATA Chapter: 53-42



141A5410U140ATSMRO

### PRODUCT DESCRIPTION

Support the floor panels

### ATS PART NUMBER

141A5410U140ATSMRO  
141A5410U149ATSMRO

### OEM PART NUMBER

141A5410-12, 141A5410-140, 141A5410Y140,  
141A5410U140  
141A5410-17, 141A5410-149, 141A5410Y149,  
141A5410U149

### TECHNICAL SPECIFICATIONS

- FAA PMA PQ5315NM, Supplement 52
- Equivalent in fit, form and function to OEM parts
- Current OEM ICA information is applicable to parts

### AIRCRAFT APPLICATION

#### 141A5410U140ATSMRO:

Boeing 737-600/700/700C/800/900/900ER/8/9

#### 141A5410U149ATSMRO:

Boeing 737-600/700/800/900/900ER/8/9



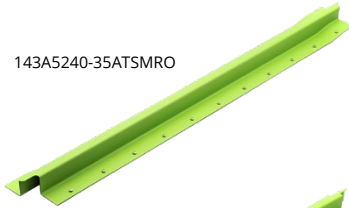
141A5410U149ATSMRO

# 53: FUSELAGE

## FLOOR PANEL BREAK ASSEMBLY

ATA Chapter: 53-42

143A5240-35ATSMRO



### PRODUCT DESCRIPTION

Provides support for floor panels located in the passenger cabin. PMA offering addresses operator-reported service difficulties for cracked OEM parts

### ATS PART NUMBER

143A5240-35ATSMRO  
143A5240-36ATSMRO

### OEM PART NUMBER

143A5240-35  
143A5240-36

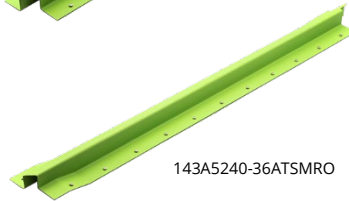
### TECHNICAL SPECIFICATIONS

- FAA PMA PQ5315NM, Supplement 38
- Equivalent in fit, form and function to OEM assembly
- Provided un-drilled to facilitate back-drilling
- Formed Aluminum Sheet
- Chemical conversion coating and corrosion-inhibiting primer applied
- 143A5240-35ATSMRO installs left
- 143A5240-36ATSMRO installs right

### AIRCRAFT APPLICATION

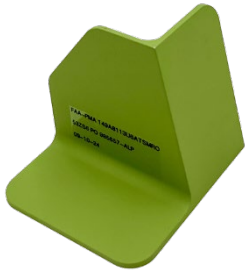
Boeing 737-600/700/800/900/900ER/8/9

143A5240-36ATSMRO



## FITTING - WATER TANK

ATA Chapter: 53-42, 38-11



### PRODUCT DESCRIPTION

The Water Tank Fitting is a component of the Water/Waste Tank Enclosure in the Aft Cargo Compartment. It provides attach points for longitudinal angles, which in turn support the Water/Waste Tank Enclosure/Lining.

### ATS PART NUMBER

143A8113U6ATSMRO

### OEM PART NUMBER

143A8113U6

### TECHNICAL SPECIFICATIONS

- FAA PMA PQ5315NM, Supplement 108
- Equivalent in fit, form and function to OEM part

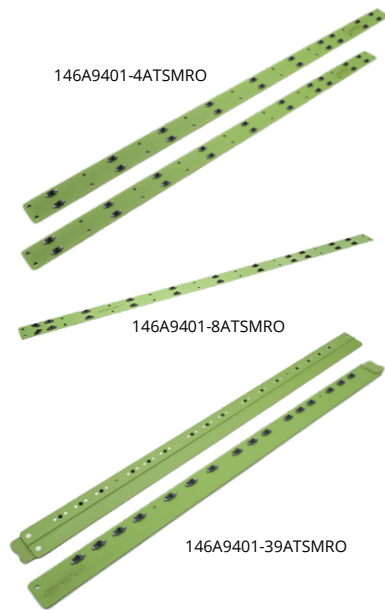
### AIRCRAFT APPLICATION

Boeing 737-700/800/8

# 53: FUSELAGE

## TEE ASSEMBLY

ATA Chapter: 53-42



### PRODUCT DESCRIPTION

Provides a connection point and support for the aft cargo floor

### ATS PART NUMBER

146A9401-4ATSMRO  
146A9401-8ATSMRO  
146A9401U39ATSMRO

### OEM PART NUMBER

146A9401-4  
146A9401-8  
146A9401-39, 146A9401Y39, 146A9401U39

### TECHNICAL SPECIFICATIONS

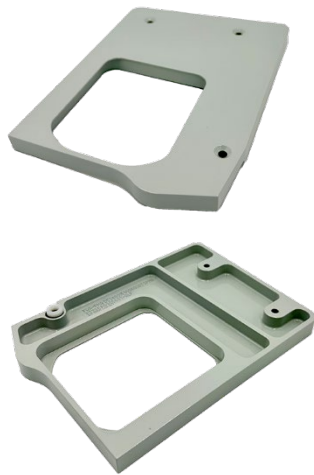
- FAA PMA PQ5315NM, Supplement 45
- Equivalent in fit, form and function to OEM assembly
- Current OEM ICA information is applicable to parts

### AIRCRAFT APPLICATION

Boeing 737-600/700/700C/800/900/900ER/8/9

## PLATE ASSY - AFT PAX DOOR

ATA Chapter: 53-46



### PRODUCT DESCRIPTION

The Plate Assy is located at the AFT Passenger Door and functions as a cover plate for the Girt Bar Fitting, closing out gaps between the Girt Bar Fitting, door frame, and adjacent floor panels

### ATS PART NUMBER

D5348015900600ATSPMA

### OEM PART NUMBER

D5348015900600

### TECHNICAL SPECIFICATIONS

- FAA PMA PQ5315NM, Supplement 113
- Equivalent in fit, form and function to OEM part

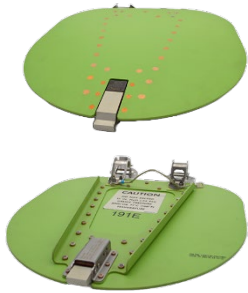
### AIRCRAFT APPLICATION

Airbus A319-100/A320-200/A321-200

# 53: FUSELAGE

## DOOR ASSEMBLY – FWD FAIRING ACCESS

ATA Chapter: 53-51, 52-49, 53-30



### PRODUCT DESCRIPTION

The Door Assembly is located between STA 520 and STA 540 on the belly of the aircraft, and provides access to the ground conditioned air connector

### ATS PART NUMBER

149A7148-23ATSMRO

### OEM PART NUMBER

149A7148-23

### TECHNICAL SPECIFICATIONS

- FAA PMA PQ5315NM, Supplement 85.
- Equivalent in fit, form, and function to OEM assembly

### AIRCRAFT APPLICATION

Boeing 737-700/700C/800/900ER/8/9

## BRACKETS – DOOR ACTUATOR

ATA Chapter: 53-51



### PRODUCT DESCRIPTION

Located on the wing-to-body fairing, the Bracket functions as a door actuator for the flap track cutout door. The flap track carriage engages the Bracket when the flap retracts, and the seal plate door opens

### ATS PART NUMBER

149A7322U19ATSMRO

149A7322U20ATSMRO

### OEM PART NUMBER

149A7322U19

149A7322U20

### TECHNICAL SPECIFICATIONS

- FAA PMA PQ5315NM, Supplement 97
- Equivalent in fit, form and function to OEM part

### AIRCRAFT APPLICATION

Boeing 737-700/800/900ER/8/9/8200

## ZEE ASSY – CARGO FLOOR, SECTION 46

ATA Chapter: 53-60



### PRODUCT DESCRIPTION

The PMA article is located at RBL 21.0, spanning the STA 867 to STA 887 frames in Section 46 of the Aft Cargo Compartment. It provides support and a means of retention for the RH sidewall liners and floor panels

### ATS PART NUMBER

146A7502-56ATSMRO

### OEM PART NUMBER

146A7502-56

### TECHNICAL SPECIFICATIONS

- FAA PMA PQ5315NM, Supplement 105
- Equivalent in fit, form and function to OEM part

### AIRCRAFT APPLICATION

Boeing 737-600/700/700C/800/900/900ER/8/9/8200

# 53: FUSELAGE

## AFT CARGO PIT SHIELD

ATA Chapter: 53-60



### PRODUCT DESCRIPTION

Provides attach points for aft cargo bay sidewall and floor panels

### ATS PART NUMBER

146A8127U1ATSMRO

### OEM PART NUMBER

146A8127U1

### TECHNICAL SPECIFICATIONS

- FAA PMA PQ5315NM, Supplement 21
- Equivalent in fit, form and function to OEM assembly
- Two coats of primer for improved corrosion resistance
- 146A8127U1ATSMRO installs forward of the aft cargo bay door

### AIRCRAFT APPLICATION

Boeing 737-600/700/700C/800/900

## AFT CARGO PIT SHIELD

ATA Chapter: 53-60



### PRODUCT DESCRIPTION

Provides attach points for sidewall and floor panels in the aft cargo compartment

### ATS PART NUMBER

146A8127U12ATSMRO

### OEM PART NUMBER

146A8127U12

### TECHNICAL SPECIFICATIONS

- FAA PMA PQ5315NM, Supplement 21
- Equivalent in fit, form and function to OEM assembly
- Two coats of primer for improved corrosion resistance
- 146A8127U12ATSMRO installs forward of the aft cargo bay door

### AIRCRAFT APPLICATION

Boeing 737-600/700/800/900/900ER

## AFT CARGO PIT SHIELD

ATA Chapter: 53-60



### PRODUCT DESCRIPTION

Provides attach points for sidewall and floor panels in the aft cargo compartment

### ATS PART NUMBER

146A8127Y10ATSMRO

### OEM PART NUMBER

146A8127Y10

### TECHNICAL SPECIFICATIONS

- FAA PMA PQ5315NM, Supplement 21
- Equivalent in fit, form and function to OEM assembly
- Two coats of primer for improved corrosion resistance
- 146A8127Y10ATSMRO installs aft of the aft cargo bay door

### AIRCRAFT APPLICATION

Boeing 737-600/700/800/900/900ER

# 53: FUSELAGE

## SCUFF PLATE - FORWARD CARGO DOOR

ATA Chapter: 53-60



### PRODUCT DESCRIPTION

Components of the cargo doorway lower main sill. Primarily designed to resist impact damage from cargo and protect underlying structure from environmental effects

### ATS PART NUMBER

146A8342-7ATSMRO

### OEM PART NUMBER

146A8342-7

### TECHNICAL SPECIFICATIONS

- FAA PMA PQ5315NM, Supplement 75.
- Equivalent in fit, form and function to OEM.
- Material: Titanium

### AIRCRAFT APPLICATION

Boeing 737-600/700/700C/800/900/900ER/8/9

## CAPSTRIP

ATA Chapter: 53-60, 25-52

453A2611-4ATSMRO 453A2611-8ATSMRO



### PRODUCT DESCRIPTION

The Capstrips are located in the Aft Cargo Compartment and fasten to floor panels, bulkhead liners, and sidewall liners. They function to close out gaps, assisting in fire containment and preventing debris accumulation below the floor panels

### ATS PART NUMBER

453A2611-4ATSMRO  
453A2611-8ATSMRO  
453A2611-9ATSMRO  
453A2611-24ATSMRO

### OEM PART NUMBER

453A2611-4  
453A2611-8  
453A2611-9  
453A2611-24

### TECHNICAL SPECIFICATIONS

- FAA PMA PQ5315NM, Supplement 100
- Equivalent in fit, form and function to OEM part

### AIRCRAFT APPLICATION

#### 453A2611-4ATSMRO:

Boeing 737-600/700/700C/800/900/900ER/8/9/8200

#### 453A2611-8ATSMRO:

Boeing 737-700/700C

#### 453A2611-9ATSMRO:

Boeing 737-700/700C

#### 453A2611-24ATSMRO:

Boeing 737-600/700/700C/800/900/900ER

453A2611-9ATSMRO



453A2611-24ATSMRO



# 53: FUSELAGE

## CAPSTRIP - ASSY

ATA Chapter: 25-52, 53-60

### PRODUCT DESCRIPTION

The Capstrips are located in the Aft Cargo Compartment and fasten to floor panels, bulkhead liners, and sidewall liners. They function to close out gaps, assisting in fire containment and preventing debris accumulation below the floor panels

### ATS PART NUMBER

453A2611-27ATSMRO  
453A2611 Y3ATSMRO  
453A2611-13ATSMRO

### OEM PART NUMBER

453A2611-27  
453A2611 Y3  
453A2611-13

### TECHNICAL SPECIFICATIONS

- FAA PMA PQ5315NM, Supplement 107
- Equivalent in fit, form and function to OEM part

### AIRCRAFT APPLICATION

#### **453A2611-27ATSMRO &**

#### **453A2611Y3ATSMRO:**

Boeing 737-600/700/700C/800/900/  
900ER/8/9

#### **453A2611-13ATSMRO:**

Boeing 737-700/700C/800/900/900ER/8/9

453A2611-27ATSMRO

453A2611Y3ATSMRO

453A2611-13ATSMRO

# 53: FUSELAGE

## CHORD

ATA Chapter: 53-70



### PRODUCT DESCRIPTION

The Chord is a component of the Section 47 floor structure, spanning the STA 927 to STA 947.5 floor beams at LBL 0.54. It functions to both stabilize the floor structure and support the cabin floor panel

### ATS PART NUMBER

147A5430U1ATSMRO

### OEM PART NUMBER

147A5430U1

### TECHNICAL SPECIFICATIONS

- FAA PMA PQ5315NM, Supplement 94
- Equivalent in fit, form and function to OEM part

### AIRCRAFT APPLICATION

Boeing 737-600/700/800/900ER/8/9/8200

## INTERCOSTAL ASSY – SECTION 47

ATA Chapter: 53-70



### PRODUCT DESCRIPTION

The PMA article is located at RBL 3.0, spanning the STA 927 to STA 947 frames in Section 47 of the Aft Cargo Compartment. It provides stiffness to the adjacent structure and provides attachment locations/support for the upper rail, which in turn supports the cargo compartment floor panels

### ATS PART NUMBER

147A7500U6ATSMRO

### OEM PART NUMBER

147A7500U6

### TECHNICAL SPECIFICATIONS

- FAA PMA PQ5315NM, Supplement 105
- Equivalent in fit, form and function to OEM part

### AIRCRAFT APPLICATION

Boeing 737- 600/700/700C/800/900/900ER/8/9/8200

## CARGO TRACK ASSEMBLY – SECTION 47, DECK SUPPORT

ATA Chapter: 53-70



### PRODUCT DESCRIPTION

Supports cargo floor panels, provides floor support for payloads, and incorporates tie down attach points to prevent cargo from shifting.

### ATS PART NUMBER

147A7501-13ATSMRO

147A7501-14ATSMRO

### OEM PART NUMBER

147A7501-13

147A7501-14

### TECHNICAL SPECIFICATIONS

- FAA PMA PQ5315NM, Supplement 79
- Equivalent in fit, form and function to OEM assembly

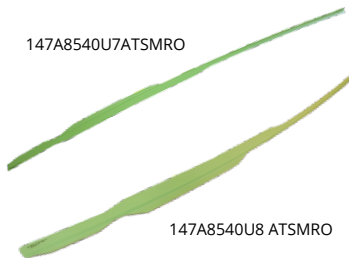
### AIRCRAFT APPLICATION

Boeing 737-600/700/700C/800/900/900ER/8/9

# 53: FUSELAGE

## INNER CHORD LH/RH OF AFT DOORS

ATA Chapter: 53-70



### PRODUCT DESCRIPTION

Formed stiffeners installed at threshold of Section 47 aft doors and are part of the door surround structure

### ATS PART NUMBER

147A8540U7ATSMRO  
147A8540U8ATSMRO

### OEM PART NUMBER

147A8540U7  
147A8540U8

### TECHNICAL SPECIFICATIONS

- FAA PMA PQ5315NM, Supplement 23
- Equivalent in fit, form and function to OEM assembly
- Current OEM ICA information is applicable to parts
- Provided as undrilled parts for match-drilling on the aircraft

### AIRCRAFT APPLICATION

Boeing 737-600/700/800/900/8

## BRACKET ASSEMBLY – AFT CARGO COMPARTMENT

ATA Chapter: 53-70, 25-52



### PRODUCT DESCRIPTION

Attachment point for Aft Cargo Compartment Bulkhead removable panel

### ATS PART NUMBER

149A8118U29ATSMRO

### OEM PART NUMBER

149A8118U29

### TECHNICAL SPECIFICATIONS

- FAA PMA PQ5315NM, Supplement 52
- Equivalent in fit, form and function to OEM part
- Current OEM ICA information is applicable to parts

### AIRCRAFT APPLICATION

Boeing 737-600/700/700C/800/900/900ER/8/9

## CLOSURE ANGLE – SECTION 48

ATA Chapter: 53-80



### PRODUCT DESCRIPTION

Closure Angles function as closeouts between the vertical stabilizer and fuselage skin

### ATS PART NUMBER

148A8310U3ATSMRO  
148A8310U4ATSMRO

### OEM PART NUMBER

148A8310-3  
148A8310-4

### TECHNICAL SPECIFICATIONS

- FAA PMA PQ5315NM, Supplement 55
- Equivalent in fit, form and function to OEM part
- Current OEM ICA information is applicable to parts

### AIRCRAFT APPLICATION

Boeing 737-600/700/700C/800/900

# 53: FUSELAGE

## CLOSURE ANGLE - SECTION 48

## ATA Chapter: 53-80



### PRODUCT DESCRIPTION

Provides a closeout interface between the fuselage crown skin and vertical stabilizer

### ATS PART NUMBER

148A8310U7ATSMRO  
148A8310U8ATSMRO

### OEM PART NUMBER

148A8310-7, 148A8310U7  
148A8310-8, 148A8310U8

### TECHNICAL SPECIFICATIONS

- FAA PMA PQ5315NM, Supplement 61
- Equivalent in fit, form and function to OEM part
- 148A8310U8ATSMRO opposite to 148A8310U7ATSMRO

### AIRCRAFT APPLICATION

Boeing 737-700/800

# 54: NACELLES/PYLONS

## LATERAL RESTRAINT

ATA Chapter: 54-52



313A2312-3ATSMRO



313A2312-4ATSMRO

### PRODUCT DESCRIPTION

Located on both the left and right engine's aft fairing. Prevents in-flight, lateral movement of the engine strut's aft fairing structure

### ATS PART NUMBER

313A2312-3ATSMRO  
313A2312-4ATSMRO

### OEM PART NUMBER

313A2312-3  
313A2312-4

### TECHNICAL SPECIFICATIONS

- FAA PMA PQ5315NM, Supplement 35
- Equivalent in fit, form and function to OEM part
- 313A2312-4ATSMRO opposite to 313A2312-3ATSMRO

### AIRCRAFT APPLICATION

Boeing 737-600/700/700C/800/900/900ER

## PRESSURE RELIEF DOOR LATCH

ATA Chapter: 54-52



### PRODUCT DESCRIPTION

The Pressure Relief Door Latch is a component of the Forward Fairing Pressure Relief Door. It functions to keep the door closed and secure during flight and to open the door during maintenance. It also allows the door to open if a specified internal pressure is reached allowing a pressure relief passage in the event the Nacelle or Pylon experience a rapid increase in internal pressure

### ATS PART NUMBER

TL22071-104ATSMRO

### OEM PART NUMBER

TL22071-104

### TECHNICAL SPECIFICATIONS

- FAA PMA PQ5315NM, Supplement 87
- Equivalent in fit, form and function to OEM part

### AIRCRAFT APPLICATION

Boeing 737-600/700/700C/800/900/900ER

# 55: STABILIZERS

## SPRING – VERTICAL FIN

ATA Chapter: 55-30



### PRODUCT DESCRIPTION

The Spring is a component of the Expansion Joint Assy in the Vertical Fin/Stabilizer. It functions to retain the Front Spar Termination Fitting Assy

### ATS PART NUMBER

176A3101U26ATSMRO

### OEM PART NUMBER

176A3101U26

### TECHNICAL SPECIFICATIONS

- FAA PMA PQ5315NM, Supplement 106
- Equivalent in fit, form and function to OEM part

### AIRCRAFT APPLICATION

Boeing 737-700 Series/800 Series/8

© 2024 Aviation Technical Services – 8/2024



Trusted Partners  
Supporting Flight

For more information contact:

[sales@rangeraav.com](mailto:sales@rangeraav.com)

+1 972 245 6699

[ATSmro.com](http://ATSmro.com)



# 57: WINGS

## STIFFENER

ATA Chapter: 57-10



### PRODUCT DESCRIPTION

Acts as additional support to the LBL 24.92 vertical stiffener of the Wing Center Section Rear Spar Installation

### ATS PART NUMBER

111A1308U15ATSMRO

### OEM PART NUMBER

111A1308-15

### TECHNICAL SPECIFICATIONS

- FAA PMA PQ5315NM, Supplement 21
- Equivalent in fit, form and function to OEM assembly
- Undrilled part to facilitate back drilling

### AIRCRAFT APPLICATION

Boeing 737-600/700/700IGW/800/900/900ER

## STIFFENER – REAR SPAR, WING CENTER SECTION

ATA Chapter: 57-10



### PRODUCT DESCRIPTION

An aluminum fitting that is installed common to the Wing Center Section Rear Spar. Primarily acts as additional support to the RBL 24.92 vertical stiffener of the Wing Center Section Rear Spar Installation.

### ATS PART NUMBER

111A1308U16ATSMRO

### OEM PART NUMBER

111A1308U16

### TECHNICAL SPECIFICATIONS

- FAA PMA PQ5315NM, Supplement 64.
- Equivalent in fit, form and function to OEM.
- Material: Aluminum Alloy

### AIRCRAFT APPLICATION

Boeing 737-600/700/700C/800/900/900ER

## CLOSEOUT SKIN ASSEMBLY

ATA Chapter: 57-41



116A4411U1ATSMRO



116A4411U2ATSMRO

### PRODUCT DESCRIPTION

The purpose of the Closeout Skin Assembly is to “closeout” or extend the profile of the Leading Edge under the engine pylon so that no gap between the wing and the pylon fairing exists

### ATS PART NUMBER

116A4411U1ATSMRO

116A4411U2ATSMRO

### OEM PART NUMBER

116A4411U1

116A4411U2

### TECHNICAL SPECIFICATIONS

- FAA PMA PQ5315NM, Supplement 23
- Equivalent in fit, form and function to OEM part
- Provided as undrilled part for match drilling during installation
- 116A4411U1ATSMRO opposite to 116A4411U2ATSMRO

### AIRCRAFT APPLICATION

Boeing 737-600/700/700C/800/900/900ER

# 57: WINGS

## STRINGER ASSY

ATA Chapter: 57-41



### PRODUCT DESCRIPTION

The PMA articles are spanwise structural members of the Wing Fixed L/E that, in combination with the skin, react axial loads between the ribs. The L/E skin is riveted to the stringer and the stringer is fastened to the ribs. A bracket on the PMA articles provides a means of retaining Leading Edge Flap actuator hydraulic tubes

### ATS PART NUMBER

116A4530U1ATSMRO  
654A0004-592ATSMRO

### OEM PART NUMBER

116A4530U1  
654A0004-592

### TECHNICAL SPECIFICATIONS

- FAA PMA PQ5315NM, Supplement 23
- Equivalent in fit, form and function to OEM part
- Provided as undrilled part for match drilling during installation
- 116A4411U1ATSMRO opposite to 116A4411U2ATSMRO

### AIRCRAFT APPLICATION

Boeing 737-600/700/700C/800/900/900ER

## SUPPORT BRACKET ASSEMBLY – LWR INBD FIXED TE

ATA Chapter: 57-50



### PRODUCT DESCRIPTION

Support Bracket Assembly acts as an attachment for the tie rod that connects the lower fixed trailing edge access panel to the upper fixed trailing edge panel

### ATS PART NUMBER

115A2750Y1ATSMRO

### OEM PART NUMBER

115A2750-1, 115A2750Y1

### TECHNICAL SPECIFICATIONS

- FAA PMA PQ5315NM, Supplement 60
- Equivalent in fit, form and function to OEM assembly

### AIRCRAFT APPLICATION

Boeing 737-600/700/700C/800/900/900ER/8/9

# 57: WINGS

## BEAM ASSEMBLY

ATA Chapter: 57-50, 27-51



### PRODUCT DESCRIPTION

The Beam Assemblies are components of the Inboard Trailing Edge fixed lower panel assembly. The Beam Assy provides attachment points for adjustment rods, which can be adjusted to maintain a smooth aerodynamic surface where the fixed lower T/E panel transitions to the INBD flap

### ATS PART NUMBER

115A2759Y5ATSMRO  
115A2759Y6ATSMRO  
115A2759Y13ATSMRO  
115A2759Y14ATSMRO

### OEM PART NUMBER

115A2759Y5  
115A2759Y6  
115A2759Y13  
115A2759Y14

### TECHNICAL SPECIFICATIONS

- FAA PMA PQ5315NM, Supplement 92
- Equivalent in fit, form and function to OEM part

### AIRCRAFT APPLICATION

**115A2759Y5ATSMRO & 115A2759Y6ATSMRO:**  
Boeing 737-600/700/700C/800/900

**115A2759Y13ATSMRO & 115A2759Y14ATSMRO:**  
Boeing 737-600/700/700C/800/900ER/8/9/8200

## WIGGLE PLATE ASSEMBLY

ATA Chapter: 57-50



### PRODUCT DESCRIPTION

Provides attach points for an Inboard Fixed Trailing Edge Lower Wing Access Panel and allows the wing to flex without tearing out the fasteners on the access panel or the rear spar

### ATS PART NUMBER

115A2781-3ATSMRO  
115A2781-4ATSMRO

### OEM PART NUMBER

115A2781-3  
115A2781-4

### TECHNICAL SPECIFICATIONS

- FAA PMA PQ5315NM, Supplement 37.
- Equivalent in fit, form and function to OEM assembly.
- 115A2781-3ATSMRO opposite part to 115A2781-4ATSMRO

### AIRCRAFT APPLICATION

Boeing 737-600/700/800/900ER

# 57: WINGS

## WIGGLE PLATE ASSEMBLY

ATA Chapter: 57-50



115A2781-13ATSMRO



115A2781-14ATSMRO

### PRODUCT DESCRIPTION

Provides attach points for an Inboard Fixed Trailing Edge Lower Wing Access Panel and allows the wing to flex without tearing out the fasteners on the access panel or the rear spar

### ATS PART NUMBER

115A2781-13ATSMRO  
115A2781-14ATSMRO

### OEM PART NUMBER

115A2781-13  
115A2781-14

### TECHNICAL SPECIFICATIONS

- FAA PMA PQ5315NM, Supplement 33.
- Equivalent in fit, form and function to OEM assembly.
- 115A2781-13ATSMRO opposite part to 115A2781-14ATSMRO

### AIRCRAFT APPLICATION

Boeing 737-600/700/800/900ER

## BULB SEAL – WING INBD FIXED T/E

ATA Chapter: 57-50



### PRODUCT DESCRIPTION

The Bulb Seal is a component of the Upper Inboard Fixed T/E on the LH/RH Wing. It provides a smooth aerodynamic surface between access panels, while filling the gap to act as a moisture barrier

### ATS PART NUMBER

115A2795-2ATSMRO

### OEM PART NUMBER

115A2795-2

### TECHNICAL SPECIFICATIONS

- FAA PMA PQ5315NM, Supplement 112
- Equivalent in fit, form and function to OEM part

### AIRCRAFT APPLICATION

Boeing 737-700/800/8

## BRACKET ASSY – MAIN LANDING GEAR BEAM

ATA Chapter: 57-51



115A2162-21ATSMRO

115A2162-22ATSMRO

### PRODUCT DESCRIPTION

The Bracket Assy is installed on the Main Landing Gear Beam on the LH and RH wing. It provides attach points for tie rods that support the Wing Inboard Fixed Trailing Edge structure

### ATS PART NUMBER

115A2162-21ATSMRO  
115A2162-22ATSMRO

### OEM PART NUMBER

115A2162-21  
115A2162-22

### TECHNICAL SPECIFICATIONS

- FAA PMA PQ5315NM, Supplement 115
- Equivalent in fit, form and function to OEM part

### AIRCRAFT APPLICATION

Boeing 737-700/800/8

# 57: WINGS

## SERRATED PLATE

ATA Chapter: 57-51



### PRODUCT DESCRIPTION

The Serrated Plates are components of the wing T/E and function to stabilize the Rib Assy via its serrations. The serrations allow for vertical adjustment when realignment may be required

### ATS PART NUMBER

115A2183Y1ATSMRO  
115A2183-3ATSMRO  
115A2183-4ATSMRO

### OEM PART NUMBER

115A2183Y1  
115A2183-3  
115A2183-4

### TECHNICAL SPECIFICATIONS

- FAA PMA PQ5315NM, Supplement 101
- Equivalent in fit, form and function to OEM part

### AIRCRAFT APPLICATION

#### 115A2183Y1ATSMRO:

Boeing 737-600/700/700C/800/900/900ER

#### 115A2183-3ATSMRO & 115A2183-4ATSMRO:

Boeing 737-600/700/700C/800/900ER

## BEAM ASSY – BEAM ASSY, KIT

ATA Chapter: 57-51



### PRODUCT DESCRIPTION

The Beam Assy is a part of the wing fixed T/E structure. It acts as a stiffening element while providing support for the fixed T/E lower access panels

### ATS PART NUMBER

#### BEAM ASSY

115A3758-9ATSMRO

#### BEAM ASSY, KIT

654A0004-622ATSMRO

### OEM PART NUMBER

115A3758-9  
654A0004-622  
115A3758-34

### TECHNICAL SPECIFICATIONS

- FAA PMA PQ5315NM, Supplement 103
- Equivalent in fit, form and function to OEM part

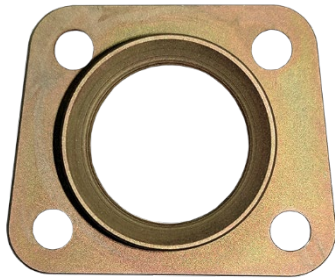
### AIRCRAFT APPLICATION

Boeing 737-600/700/700C/800/900/900ER/  
8/9/8200

# 57: WINGS

## BUSHING - ADJUST LINK

ATA Chapter: 57-53, 27-51



### PRODUCT DESCRIPTION

Component of the Flap Track Fairing Module that serves as an aft attach point to hold the #1/#2/#3/#6/#7/#8 Flap Track Fairing in place

### ATS PART NUMBER

113A9120-1ATSMRO

### OEM PART NUMBER

113A9120-1

### TECHNICAL SPECIFICATIONS

- Bushing - Adjust Link (P/N: 113A9120-1ATSMRO) is a detail that feeds into Adjust Link Assembly (P/N: 113A9305-5ATSMRO, Supplement 24)

### AIRCRAFT APPLICATION

Boeing 737-600/700/800/900/900ER/8

## BUSHING

ATA Chapter: 57-53



### PRODUCT DESCRIPTION

The Bushings are components of the Flap Track Fairing Module, which improves aerodynamic efficiency. In combination with the Pivot Bolts that mate inside the Bushings, they function to provide an attachment and pivot point for the aft section of the Fairing Module

### ATS PART NUMBER

113A9209-2ATSMRO  
113A9309-2ATSMRO

### OEM PART NUMBER

113A9209-2  
113A9309-2

### TECHNICAL SPECIFICATIONS

- FAA PMA PQ5315NM, Supplement 93
- Equivalent in fit, form and function to OEM part

### AIRCRAFT APPLICATION

Boeing 700/700C/800/900ER/8/9/8200

## ADJUST LINK ASSEMBLY

ATA Chapter: 57-53, 27-51



### PRODUCT DESCRIPTION

Component of the Flap Track Fairing Module that serves as an aft attach point to hold the #3 and #6 Flap Track Fairing in place

### ATS PART NUMBER

113A9305-5ATSMRO

### OEM PART NUMBER

113A9305-5

### TECHNICAL SPECIFICATIONS

- FAA PMA PQ5315NM, Supplement 24.
- Equivalent in fit, form and function to OEM assembly.
- 15.3 inches long x 6.8 inches wide x 1.9 inches deep.
- Approximate Weight = 1.65 lbs

### AIRCRAFT APPLICATION

Boeing 737-600/700/800/900/900ER/8



Trusted Partners  
Supporting Flight



# 57: WINGS

## ADJUST LINK

ATA Chapter: 57-53, 27-51



### PRODUCT DESCRIPTION

Component of the Flap Track Fairing Module that serves as an aft attach point to hold the #3 and #6 Flap Track Fairing in place

### ATS PART NUMBER

113A9305-7ATSMRO

### OEM PART NUMBER

113A9305-7

### TECHNICAL SPECIFICATIONS

- Adjust Link (P/N: 113A9305-7ATSMRO) is a detail that feeds into Adjust Link Assembly (P/N: 113A9305-5ATSMRO, Supplement 24)

### AIRCRAFT APPLICATION

Boeing 737-600/700/800/900/900ER/8

## AFT BULKHEAD - FLAP SUPPORT

ATA Chapter: 57-53, 27-51

113A9360-1ATSMRO



### PRODUCT DESCRIPTION

The Bulkhead Assy is a component of the inboard T/E flap AFT Fairing. It functions to support a link and rod assembly used to adjust clearance between the top surface of the AFT Fairing and T/E flap

### ATS PART NUMBER

113A9360-1ATSMRO

113A9360-2ATSMRO

### OEM PART NUMBER

113A9360-1

113A9360-2

### TECHNICAL SPECIFICATIONS

- FAA PMA PQ5315NM, Supplement 101
- Equivalent in fit, form and function to OEM part

### AIRCRAFT APPLICATION

Boeing 737-600/700/700C/800/900/900ER

113A9360-2ATSMRO



# 57: WINGS

## RETAINER

ATA Chapter: 57-53, 27-51



### PRODUCT DESCRIPTION

Component of the Flap Track Fairing Module that serves as an aft attach point to hold the #1/#2/#3/#6/#7/#8 Flap Track Fairing in place

### ATS PART NUMBER

69B14136-2ATSMRO

### OEM PART NUMBER

69B14136-2

### TECHNICAL SPECIFICATIONS

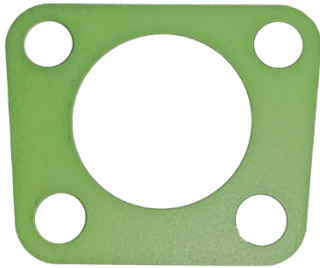
- Retainer (P/N: 69B14136-2ATSMRO) is a detail that feeds into Adjust Link Assembly (P/N: 113A9305-5ATSMRO, Supplement 24)

### AIRCRAFT APPLICATION

Boeing 737-600/700/800/900/900ER/8

## SHIM - LAMINATED

ATA Chapter: 57-53, 27-51



### PRODUCT DESCRIPTION

Component of the Flap Track Fairing Module that serves as an aft attach point to hold the #1/#2/#3/#6/#7/#8 Flap Track Fairing in place

### ATS PART NUMBER

69B14136-3ATSMRO

### OEM PART NUMBER

69B14136-3

### TECHNICAL SPECIFICATIONS

- Shim - Laminated (P/N: 69B14136-3ATSMRO) is a detail that feeds into Adjust Link Assembly (P/N: 113A9305-5ATSMRO, Supplement 24)

### AIRCRAFT APPLICATION

Boeing 737-600/700/800/900/900ER/8

## RETAINER - KRUEGER SEAL

ATA Chapter: 57-56, 27-81



114A1811-1ATSMRO

114A1811-2ATSMRO

### PRODUCT DESCRIPTION

The Retainer secures a Krueger Flap Seal. During Flap extension and retraction, the Krueger Seal protects the Thrust Reverser from abrading the Krueger Flap

### ATS PART NUMBER

114A1811-1ATSMRO

114A1811-2ATSMRO

### OEM PART NUMBER

114A1811-1

114A1811-2

### TECHNICAL SPECIFICATIONS

- FAA PMA PQ5315NM, Supplement 103
- Equivalent in fit, form and function to OEM part

### AIRCRAFT APPLICATION

Boeing 737-600/700/700C/800/900/900ER

# 57: WINGS

## WEAR PAD – KRUEGER SEAL

ATA Chapter: 57-56, 27-81



### PRODUCT DESCRIPTION

The Wear Pad fastens to the Krueger Seal Retainer. During Flap extension and retraction, the Krueger Seal assembly protects the Thrust Reverser from abrading the Krueger Flap

### ATS PART NUMBER

114A1811-3ATSMRO

### OEM PART NUMBER

114A1811-3

### TECHNICAL SPECIFICATIONS

- FAA PMA PQ5315NM, Supplement 103
- Equivalent in fit, form and function to OEM part

### AIRCRAFT APPLICATION

Boeing 737-600/700/700C/800/900/900ER

# 71: POWER PLANT

## BRACKET ASSY - UPPER LEFT

ATA Chapter: 71-00, 36-11



### PRODUCT DESCRIPTION

The Bracket Assy is installed to the Engine Fan Case/Frame, Flange A1. It provides support/stabilization to the Lower Pneumatic Starter Duct

### ATS PART NUMBER

332A2930-7ATSMRO

### OEM PART NUMBER

332A2930-7

### TECHNICAL SPECIFICATIONS

- FAA PMA PQ5315NM, Supplement 107
- Equivalent in fit, form and function to OEM part

### AIRCRAFT APPLICATION

Boeing 737-700/800

## TEE FRAME – UPPER and LOWER

ATA Chapter: 71-10



### PRODUCT DESCRIPTION

Act as a supportive shelf for the engine cowlings to rest against when the cowlings are in the close and latched position

### ATS PART NUMBER

314-2162-3ATSMRO (Upper)  
314-2162-4ATSMRO (Lower)

### OEM PART NUMBER

314-2162-3  
314-2162-4

### TECHNICAL SPECIFICATIONS

- FAA PMA PQ5315NM, Supplement 25
- Equivalent in fit, form and function to OEM part

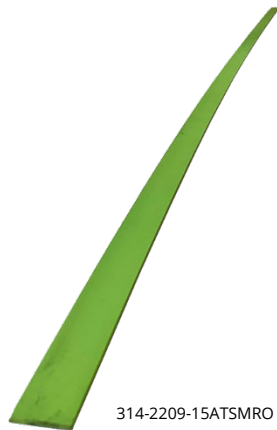
### AIRCRAFT APPLICATION

Boeing 737-600/700/700C/800/900/900ER

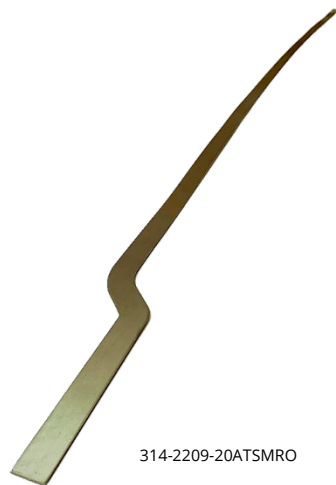
# 71: POWER PLANT

## RUBSTRIP

ATA Chapter: 71-10



314-2209-15ATSMRO



314-2209-20ATSMRO

### PRODUCT DESCRIPTION

Rubstrips are thin, flat, metallic sheet strips that line the edges of the Fan Cowl Assemblies' skins to protect them from frictional wear

### ATS PART NUMBER

314-2209-13ATSMRO  
314-2209-14ATSMRO  
314-2209-15ATSMRO  
314-2209-16ATSMRO  
314-2209-17ATSMRO  
314-2209-18ATSMRO  
314-2209-19ATSMRO  
314-2209-20ATSMRO  
314-2209-21ATSMRO  
314-2209-22ATSMRO  
314-2209-23ATSMRO  
314-2209-24ATSMRO

### OEM PART NUMBER

314-2209-13  
314-2209-14  
314-2209-15  
314-2209-16  
314-2209-17  
314-2209-18  
314-2209-19  
314-2209-20  
314-2209-21  
314-2209-22  
314-2209-23  
314-2209-24

### TECHNICAL SPECIFICATIONS

- FAA PMA PQ5315NM, Supplement 56
- Equivalent in fit, form and function to OEM part

### AIRCRAFT APPLICATION

Boeing 737-600/700/700C/800/900/900ER

## DOUBLER - LEFT HAND FAN COWL

ATA Chapter: 71-10



### PRODUCT DESCRIPTION

Formed section made from aluminum sheet metal that is attached to the Engine Fan Cowl. Provides reinforcement and acts as a stiffening element of the Fan Cowl skin adjacent to the Pressure Relief Door cutout

### ATS PART NUMBER

314-2218-6ATSMRO

### OEM PART NUMBER

314-2218-6

### TECHNICAL SPECIFICATIONS

- FAA PMA PQ5315NM, Supplement 58
- Equivalent in fit, form and function to OEM part

### AIRCRAFT APPLICATION

Boeing 737-600/700/700C/800/900/900ER

# 71: POWER PLANT

## COWLING STRIKE PLATE

ATA Chapter: 71-10



### PRODUCT DESCRIPTION

Strike Plate is a bent CRES sheet that provides a restraint point and wear surface for the Integrated Drive Generator. Door latches when in the closed position

### ATS PART NUMBER

314-2223-1ATSMRO

### OEM PART NUMBER

314-2223-1

### TECHNICAL SPECIFICATIONS

- FAA PMA PQ5315NM, Supplement 48
- Equivalent in fit, form and function to OEM part

### AIRCRAFT APPLICATION

Boeing 737-600/700/700C/800/900/900ER

## FIRE BARRIER

ATA Chapter: 71-11



### PRODUCT DESCRIPTION

Fire barriers are part of the fire containment system and prevent a fire in the engine fan compartment from spreading beyond the firewall

### ATS PART NUMBER

314-2146-3ATSMRO (Left hand)  
314-2146-4ATSMRO (Right hand)

### OEM PART NUMBER

314-2146-3  
314-2146-4

### TECHNICAL SPECIFICATIONS

- FAA PMA PQ5315NM, Supplement 44
- Equivalent in fit, form and function to OEM part

### AIRCRAFT APPLICATION

Boeing 737-600/700/700C/800/900/900ER



# 75: BLEED AIR

## SPRING - COMPRESSION

ATA Chapter: 75-10, 30-21



### PRODUCT DESCRIPTION

Located in the Engine Nose Cowl Thermal Anti-Ice (TAI) Valve, the Compression Spring is a component of the TAI valve body shaft. It compresses a self-aligning bearing and preloads it against the valve body to fix the bearing's position within the housing

### ATS PART NUMBER

323660ATSMRO

### OEM PART NUMBER

323660

### TECHNICAL SPECIFICATIONS

- FAA PMA PQ5315NM, Supplement 97, 109
- Equivalent in fit, form and function to OEM

### AIRCRAFT APPLICATION

Boeing MD-11F

Airbus A300 Model F4-605R

# 78: EXHAUST

## CLIPS – FIRE SEAL

ATA Chapter: 78-31



### PRODUCT DESCRIPTION

The Clips are a side plate of the Fire Barrier Assy installed on the Engine Thrust Reverser Cowl inner wall that functions as a fire barrier and to protect the Thrust Reverser seal

### ATS PART NUMBER

315A2127-7ATSMRO  
315A2127-8ATSMRO  
315A2127-10ATSMRO

### OEM PART NUMBER

315A2127-7  
315A2127-8  
315A2127-10

### TECHNICAL SPECIFICATIONS

- FAA PMA PQ5315NM, Supplement 98
- Equivalent in fit, form and function to OEM part

### AIRCRAFT APPLICATION

#### 315A2127-7ATSMRO

Boeing 737-600/700/700C/800/900/900ER

#### 315A2127-8ATSMRO

Boeing 737-600/700/700C/800/900/900ER

#### 315A2127-10ATSMRO

Boeing 737-700/700C/800/900/900ER

## HYDRAULIC FUSE HOUSING

ATA Chapter: 78-34, 27-81, 29-11, 32-31



### PRODUCT DESCRIPTION

Precision machined tube that houses a piston, metering cone, metering body, piston spring, metering cylinder and other parts to satisfy operation parameters indicated for its application

Housing typically replaced during overhaul or rebuild of Flow Rate Fuse Assembly. Each fuse configuration has been designed to accommodate specific dimensional, weight and hydraulic interface requirements

### ATS PART NUMBER

7-2882-4ATS  
7-2882-5ATS  
7-2882-6ATS

### OEM PART NUMBER

7-2882-4  
7-2882-5  
7-2882-6

### TECHNICAL SPECIFICATIONS

- FAA PMA PQ5315NM, Supplement 1
- Equivalent in fit, form and function to OEM assembly
- -4: 4.45-inch-Long x 1.75-inch diameter
- -5: 5.17-inch-Long x 1.75-inch diameter
- -6: 5.78-inch-Long x 1.75-inch diameter
- Approximate Weight = 0.41 lbs.
- Aluminum material

### AIRCRAFT APPLICATION

Boeing 737-300/400/500/600/700/700C/800/900/900ER