

27: FLIGHT CONTROLS

HYDRAULIC FUSE HOUSING

ATA Chapter: 27-32



PRODUCT DESCRIPTION

Component housing can be installed on separate Flow Rate Fuse assemblies
Contains parts that make a hydraulic fuse housing

ATS PART NUMBER

7-1462-1ATS

OEM PART NUMBER

7-1462-1

TECHNICAL SPECIFICATIONS

- FAA PMA PQ5315NM, Supplement 3.
- Equivalent in fit, form and function to OEM assembly
- 2-7680 and 2-7681
- 3.76 inches long x 0.93 inches diameter
- Approximate Weight = 0.21 lbs.
- Stainless steel material

AIRCRAFT APPLICATION

Boeing 737-300/400/500/600/700/700C/800/900/900ER
Boeing 757-200/200PF/300
Boeing 767-200/300/300F/400ER
Boeing 777-200/200LR/300/300ER/F Series

RETAINER, SEAL – INBD FIXED T/E

ATA Chapter: 27-50, 27-51



PRODUCT DESCRIPTION

The Seal Retainers accommodate an aerodynamic bulb seal to reduce drag at the wing trailing edge panel transition to inboard flap

ATS PART NUMBER

115A2752-17ATSMRO
115A2752-18ATSMRO

OEM PART NUMBER

115A2752-17
115A2752-18

TECHNICAL SPECIFICATIONS

- FAA PMA PQ5315NM, Supplement 89
- Equivalent in fit, form, and function to OEM assembly

AIRCRAFT APPLICATION

Boeing 737-600/700/700C/800/900/900ER

FITTING SUB-ASSEMBLY

ATA Chapter: 27-51



PRODUCT DESCRIPTION

Serves as an attach point for the forward fairing section, connecting it to the mechanism on the interior of the fairing.

ATS PART NUMBER

113A1350-3ATSMRO

OEM PART NUMBER

113A1350-3

TECHNICAL SPECIFICATIONS

- FAA PMA PQ5315NM, Supplement 36.
- Equivalent in fit, form and function to OEM assembly
- 6.7 inches long x 3.5-inch-wide x 2.0-inches-deep
- Approximate Weight = 0.45 lbs.
- Aluminum material

AIRCRAFT APPLICATION

Boeing 737-600/700/700C/800/900/900ER/8/9

27: FLIGHT CONTROLS

ATTACH BEAM ASSEMBLY – POSITIONS #1 and #8

ATA Chapter: 27-51

113A9104-1



PRODUCT DESCRIPTION

Component of the Flap Track Fairing Module that serves as an aft attach point to hold the corresponding Flap Track Fairing in place

P/N: 113A9104-1ATSMRO holds #1

P/N: 113A9104-2ATSMRO holds #8

ATS PART NUMBER

113A9104-1ATSMRO

113A9104-2ATSMRO

OEM PART NUMBER

113A9104-1

113A9104-2

TECHNICAL SPECIFICATIONS

- FAA PMA PQ5315NM, Supplement 41
- Equivalent in fit, form and function to OEM assembly
- 13.34-inches-long x 5.14-inches-wide x 2.76-inches-deep
- Approximate Weight = 2.48 lbs.
- Aluminum material

AIRCRAFT APPLICATION

Boeing 737-600/700/700C/800/900/900ER/8/9



113A9104-2

ATTACH BEAM – POSITIONS #1 and #8

ATA Chapter: 27-51

113A9104-3



PRODUCT DESCRIPTION

Component of the Flap Track Fairing Module that serves as an aft attach point to hold the corresponding Flap Track Fairing in place

P/N: 113A9104-3ATSMRO holds #1

P/N: 113A9104-4ATSMRO holds #8

ATS PART NUMBER

113A9104-3ATSMRO

113A9104-4ATSMRO

OEM PART NUMBER

113A9104-3

113A9104-4

TECHNICAL SPECIFICATIONS

- FAA PMA PQ5315NM, Supplement 41
- Equivalent in fit, form and function to OEM assembly
- 13.34-inches-long x 5.14-inches-wide x 2.76-inches-deep
- Approximate Weight = 2.48 lbs.
- Aluminum material

AIRCRAFT APPLICATION

Boeing 737-600/700/700C/800/900/900ER/8/9



113A9104-4

27: FLIGHT CONTROLS

ADJUST LINK ASSEMBLY – POSITIONS #1, #2, #7 and #8

ATA Chapter: 27-51



113A9105-5

PRODUCT DESCRIPTION

Component of the Flap Track Fairing Module that serves as an aft attach point to hold the corresponding Flap Track Fairing in place

P/N: 113A9105-5ATSMRO holds #1 and #8

P/N: 113A9205-5ATSMRO holds #2 and #7

ATS PART NUMBER

113A9105-5ATSMRO

113A9205-5ATSMRO

OEM PART NUMBER

113A9105-5

113A9205-5



113A9205-5

TECHNICAL SPECIFICATIONS

- FAA PMA PQ5315NM, Supplement 42.
- Equivalent in fit, form and function to OEM assembly.

- Aluminum material

113A9105-5ATSMRO:

- 13.45 inches long x 6.77 inches wide x 1.90 inches deep.

- Approximate Weight = 1.45 lbs.

113A9205-5ATSMRO:

- 13.74 inches long x 7.16 inches wide x 1.90 inches deep.

- Approximate Weight = 1.50 lbs.

AIRCRAFT APPLICATION

Boeing 737-600/700/800/900/900ER/8

ADJUST LINK – POSITIONS #1, #2, #7 and #8

ATA Chapter: 27-51



113A9105-7

PRODUCT DESCRIPTION

Component of the Flap Track Fairing Module that serves as an aft attach point to hold the corresponding Flap Track Fairing in place

P/N: 113A9105-7ATSMRO holds #1 and #8

P/N: 113A9205-7ATSMRO holds #2 and #7

ATS PART NUMBER

113A9105-7ATSMRO

113A9205-7ATSMRO

OEM PART NUMBER

113A9105-7

113A9205-7



113A9205-7

TECHNICAL SPECIFICATIONS

- FAA PMA PQ5315NM, Supplement 42.
- Equivalent in fit, form and function to OEM assembly.

- Aluminum material

113A9105-7ATSMRO:

- 13.45 inches long x 6.77 inches wide x 1.90 inches deep.

- Approximate Weight = 1.45 lbs.

113A9205-7ATSMRO:

- 13.74 inches long x 7.16 inches wide x 1.90 inches deep.

- Approximate Weight = 1.50 lbs.

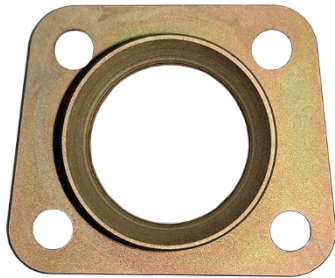
AIRCRAFT APPLICATION

Boeing 737-600/700/800/900/900ER/8/9

27: FLIGHT CONTROLS

BUSHING - ADJUST LINK

ATA Chapter: 27-51, 57-53



PRODUCT DESCRIPTION

Component of the Flap Track Fairing Module that serves as an aft attach point to hold the #1/#2/#3/#6/#7/#8 Flap Track Fairing in place

ATS PART NUMBER

113A9120-1ATSMRO

OEM PART NUMBER

113A9120-1

TECHNICAL SPECIFICATIONS

- Bushing - Adjust Link (P/N: 113A9120-1ATSMRO) is a detail that feeds into Adjust Link Assembly (P/N: 113A9305-5ATSMRO, Supplement 24)

AIRCRAFT APPLICATION

Boeing 737-600/700/800/900/900ER/8

ATTACH BEAM ASSEMBLY - POSITIONS #2 and #7

ATA Chapter: 27-51



PRODUCT DESCRIPTION

Component of the Flap Track Fairing Module that serves as an aft attach point to hold the corresponding Flap Track Fairing in place

P/N: 113A9204-1ATSMRO holds #2

P/N: 113A9204-2ATSMRO holds #7

ATS PART NUMBER

113A9204-1ATSMRO

113A9204-2ATSMRO

OEM PART NUMBER

113A9204-1

113A9204-2

TECHNICAL SPECIFICATIONS

- FAA PMA PQ5315NM, Supplement 41
- Equivalent in fit, form and function to OEM assembly
- 15.94-inches-long x 5.17-inches-wide x 6.01-inches-deep
- Approximate Weight = 3.40 lbs.
- Aluminum material

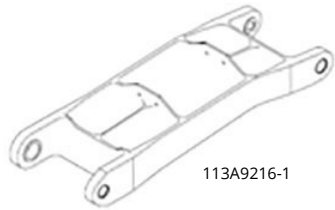
AIRCRAFT APPLICATION

Boeing 737-600/700/700C/800/900/900ER/8/9

27: FLIGHT CONTROLS

BEAM ASSEMBLY – POSITIONS #2 and #7

ATA Chapter: 27-51



113A9216-1

PRODUCT DESCRIPTION

Component of the Flap Track Fairing Module that serves as an aft attach point to hold the corresponding Flap Track Fairing in place

P/N: 113A9216-1ATSMRO holds #2

P/N: 113A9216-2ATSMRO holds #7

ATS PART NUMBER

113A9216-1ATSMRO

113A9216-2ATSMRO

OEM PART NUMBER

113A9216-1

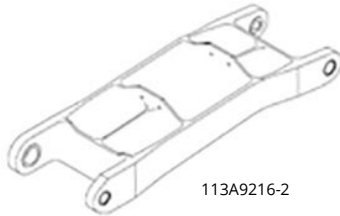
113A9216-2

TECHNICAL SPECIFICATIONS

- FAA PMA PQ5315NM, Supplement 41
- Equivalent in fit, form and function to OEM assembly
- 15.70-inches-long x 5.17-inches-wide x 2.60-inches-deep.
- Approximate Weight = 3.40 lbs.
- Aluminum material

AIRCRAFT APPLICATION

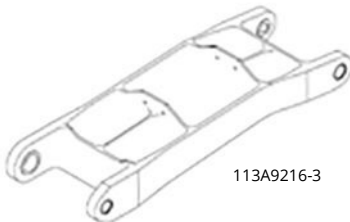
Boeing 737-600/700/700C/800/900/900ER/8/9



113A9216-2

ATTACH BEAM – POSITIONS #2 and #7

ATA Chapter: 27-51



113A9216-3

PRODUCT DESCRIPTION

Component of the Flap Track Fairing Module that serves as an aft attach point to hold the corresponding Flap Track Fairing in place

P/N: 113A9216-3ATSMRO holds #2

P/N: 113A9216-4ATSMRO holds #7

ATS PART NUMBER

113A9216-3ATSMRO

113A9216-4ATSMRO

OEM PART NUMBER

113A9216-3

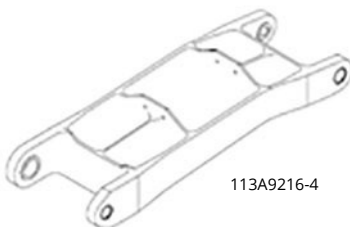
113A9216-4

TECHNICAL SPECIFICATIONS

- FAA PMA PQ5315NM, Supplement 41
- Equivalent in fit, form and function to OEM assembly
- 15.70-inches-long x 5.17-inches-wide x 2.60-inches-deep.
- Approximate Weight = 3.40 lbs.
- Aluminum material

AIRCRAFT APPLICATION

Boeing 737-600/700/700C/800/900/900ER/8/9

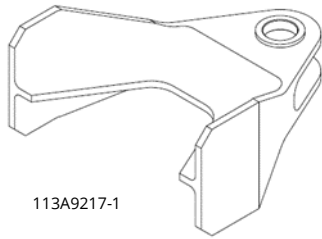


113A9216-4

27: FLIGHT CONTROLS

FITTING ASSEMBLY – POSITIONS #2 and #7

ATA Chapter: 27-51



113A9217-1

PRODUCT DESCRIPTION

Component of the Flap Track Fairing Module that serves as an aft attach point to hold the #2 and #7 Flap Track Fairing in place

ATS PART NUMBER

113A9217-1ATSMRO
113A9217-3ATSMRO

OEM PART NUMBER

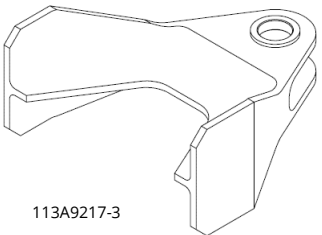
113A9217-1
113A9217-3

TECHNICAL SPECIFICATIONS

- FAA PMA PQ5315NM, Supplement 41
- Equivalent in fit, form and function to OEM assembly
- 4.37-inches-long x 4.24-inches-wide x 2.10-inches-deep.
- Aluminum material

AIRCRAFT APPLICATION

Boeing 737-600/700/700C/800/900/900ER/8/9



113A9217-3

ATTACH BEAM ASSEMBLY – POSITIONS #3 and #6

ATA Chapter: 27-51



PRODUCT DESCRIPTION

Component of the Flap Track Fairing Module that serves as an aft attach point to hold the #3 and #6 Flap Track Fairings in place

ATS PART NUMBER

113A9304-1ATSMRO

OEM PART NUMBER

113A9304-1

TECHNICAL SPECIFICATIONS

- FAA PMA PQ5315NM, Supplement 23
- Equivalent in fit, form and function to OEM assembly
- 11.31-inches-long x 5.07-inches-wide x 1.64-inches-deep
- Approximate Weight = 2.04 lbs.
- Aluminum material

AIRCRAFT APPLICATION

Boeing 737-600/700/700C/800/900/900ER/8

ADJUST LINK ASSEMBLY

ATA Chapter: 27-51, 57-53



PRODUCT DESCRIPTION

Component of the Flap Track Fairing Module that serves as an aft attach point to hold the #3 and #6 Flap Track Fairing in place

ATS PART NUMBER

113A9305-5ATSMRO

OEM PART NUMBER

113A9305-5

TECHNICAL SPECIFICATIONS

- FAA PMA PQ5315NM, Supplement 24.
- Equivalent in fit, form and function to OEM assembly.
- 15.3 inches long x 6.8 inches wide x 1.9 inches deep.
- Approximate Weight = 1.65 lbs

AIRCRAFT APPLICATION

Boeing 737-600/700/800/900/900ER/8

27: FLIGHT CONTROLS

ADJUST LINK

ATA Chapter: 27-51, 57-53



PRODUCT DESCRIPTION

Component of the Flap Track Fairing Module that serves as an aft attach point to hold the #3 and #6 Flap Track Fairing in place

ATS PART NUMBER

113A9305-7ATSMRO

OEM PART NUMBER

113A9305-7

TECHNICAL SPECIFICATIONS

- Adjust Link (P/N: 113A9305-7ATSMRO) is a detail that feeds into Adjust Link Assembly (P/N: 113A9305-5ATSMRO, Supplement 24)

AIRCRAFT APPLICATION

Boeing 737-600/700/800/900/900ER/8

DRIVE ROD ASSEMBLY and ADJUST ROD ASSEMBLY

ATA Chapter: 27-51



113A9306-4



113A9307-4

PRODUCT DESCRIPTION

Components of the Flap Track Fairing Module that serves as an aft attach point to hold Flap Track Fairing in place

Both Drive Rod Assembly (P/N: 113A9306-4ATSMRO) and Adjust Rod Assembly (P/N: 113A9307-4ATSMRO) hold #3 and #6

ATS PART NUMBER

113A9306-4ATSMRO

113A9307-4ATSMRO

OEM PART NUMBER

113A9306-1, 113A9306-4

113A9307-1, 113A9307-4

TECHNICAL SPECIFICATIONS

- FAA PMA PQ5315NM, Supplement 51
- Equivalent in fit, form and function to OEM assembly

113A9306-4ATSMRO:

- 9.76 inches long x 0.675 inches diameter
- Approximate Weight = 0.44 lbs.

113A9307-4ATSMRO:

- 10.89 inches long x 0.675 inches diameter
- Approximate Weight = 0.46 lbs.

AIRCRAFT APPLICATION

Boeing 737-600/700/700C/800/900/900ER/8/9

PIVOT BOLT - #1, #2, #3, #6, #7 and #8

ATA Chapter: 27-51



113A9308-1



113A9208-1

PRODUCT DESCRIPTION

Component of the Flap Track Fairing Module that serves as an aft attach point to hold the corresponding Flap Track Fairing in place +D27

ATS PART NUMBER

113A9308-1ATSMRO

113A9208-1ATSMRO

OEM PART NUMBER

113A9308-1

113A9208-1

TECHNICAL SPECIFICATIONS

- FAA PMA PQ5315NM, Supplement 43
- Equivalent in fit, form and function to OEM assembly

- Annealed Bar material

113A9308-1ATSMRO:

- 11.22 inches long x 0.498 inches diameter.
- Approximate Weight = 0.37 lbs.

113A9208-1ATSMRO:

- 11.06 inches long x 0.623 inches diameter.
- Approximate Weight = 0.56 lbs.

AIRCRAFT APPLICATION

Boeing 737-600/700/700C/800/900/900ER/8/9

27: FLIGHT CONTROLS

BUSHING - POSITIONS #1, #2, #3, #6, #7 and #8

ATA Chapter: 27-51



PRODUCT DESCRIPTION

Component of the Flap Track Fairing Module that serves as an aft attach point to hold the corresponding Flap Track Fairings in place
P/N: 113A9309-1ATSMRO holds #3 and #6
P/N: 113A9209-1ATSMRO holds #1, #2, #7 and #8

ATS PART NUMBER

113A9309-1ATSMRO
113A9209-1ATSMRO

OEM PART NUMBER

113A9309-1
113A9209-1

TECHNICAL SPECIFICATIONS

- FAA PMA PQ5315NM, Supplement 43
 - Equivalent in fit, form and function to OEM assembly
 - Annealed Bar material
- 113A9309-1ATSMRO:**
- 9.46-inches-long x 0.686 inches diameter
 - Approximate Weight = 0.26 lbs.
- 113A9209-1ATSMRO:**
- 8.72-inches-long x 0.874 inches diameter
 - Approximate Weight = 0.41 lbs.

AIRCRAFT APPLICATION

Boeing 737-600/700/700C/800/900/900ER/8/9

AFT BULKHEAD - FLAP SUPPORT

ATA Chapter: 27-51, 57-53



PRODUCT DESCRIPTION

The Bulkhead Assy is a component of the inboard T/E flap AFT Fairing. It functions to support a link and rod assembly used to adjust clearance between the top surface of the AFT Fairing and T/E flap

ATS PART NUMBER

113A9360-1ATSMRO
113A9360-2ATSMRO

OEM PART NUMBER

113A9360-1
113A9360-2

TECHNICAL SPECIFICATIONS

- FAA PMA PQ5315NM, Supplement 101
- Equivalent in fit, form and function to OEM part

AIRCRAFT APPLICATION

Boeing 737-600/700/700C/800/900/900ER

27: FLIGHT CONTROLS

RUBSTRIP – AFT FAIRING, FLAP SUPPORT No. 3 and No. 6

ATA Chapter: 27-51



PRODUCT DESCRIPTION

Rubstrip is located on the inner face of the No. 3 and No. 6 Aft Fairings and act as a wear surface to the wing flap actuation structure

ATS PART NUMBER

113A9380-1ATSMRO
113A9380-2ATSMRO

OEM PART NUMBER

113A9380-1
113A9380-2

TECHNICAL SPECIFICATIONS

- FAA PMA PQ5315NM, Supplement 77.
- Equivalent in fit, form and function to OEM.
- Material: Delrin Sheet

AIRCRAFT APPLICATION

113A9380-1ATSMRO:

Boeing 737-600/700/700C/800/900/900ER

113A9380-2ATSMRO:

Boeing 737-700/700C/800/900ER/8/9

BEAM ASSEMBLY

ATA Chapter: 27-51, 57-50



PRODUCT DESCRIPTION

The Beam Assemblies are components of the Inboard Trailing Edge fixed lower panel assembly. The Beam Assy provides attachment points for adjustment rods, which can be adjusted to maintain a smooth aerodynamic surface where the fixed lower T/E panel transitions to the INBD flap

ATS PART NUMBER

115A2759Y5ATSMRO
115A2759Y6ATSMRO
115A2759Y13ATSMRO
115A2759Y14ATSMRO

OEM PART NUMBER

115A2759Y5
115A2759Y6
115A2759Y13
115A2759Y14

TECHNICAL SPECIFICATIONS

- FAA PMA PQ5315NM, Supplement 92
- Equivalent in fit, form and function to OEM part

AIRCRAFT APPLICATION

115A2759Y5ATSMRO & 115A2759Y6ATSMRO:

Boeing 737-600/700/700C/800/900

115A2759Y13ATSMRO &

115A2759Y14ATSMRO:

Boeing 737-600/700/700C/800/900ER/8/9/8200

27: FLIGHT CONTROLS

RETAINER

ATA Chapter: 27-51, 57-53



PRODUCT DESCRIPTION

Component of the Flap Track Fairing Module that serves as an aft attach point to hold the #1/#2/#3/#6/#7/#8 Flap Track Fairing in place

ATS PART NUMBER

69B14136-2ATSMRO

OEM PART NUMBER

69B14136-2

TECHNICAL SPECIFICATIONS

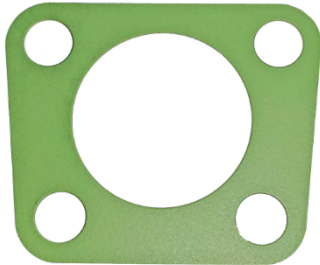
- Retainer (P/N: 69B14136-2ATSMRO) is a detail that feeds into Adjust Link Assembly (P/N: 113A9305-5ATSMRO, Supplement 24)

AIRCRAFT APPLICATION

Boeing 737-600/700/800/900/900ER/8

SHIM - LAMINATED

ATA Chapter: 27-51, 57-53



PRODUCT DESCRIPTION

Component of the Flap Track Fairing Module that serves as an aft attach point to hold the #1/#2/#3/#6/#7/#8 Flap Track Fairing in place

ATS PART NUMBER

69B14136-3ATSMRO

OEM PART NUMBER

69B14136-3

TECHNICAL SPECIFICATIONS

- Shim - Laminated (P/N: 69B14136-3ATSMRO) is a detail that feeds into Adjust Link Assembly (P/N: 113A9305-5ATSMRO, Supplement 24)

AIRCRAFT APPLICATION

Boeing 737-600/700/800/900/900ER/8

GIMBAL - POSITIONS #1, #2, #3, #6, #7 and #8

ATA Chapter: 27-51



PRODUCT DESCRIPTION

Part of the gimbal that moves the trailing edge flap surface. The gimbal connects the ballscrew nut and moves as the ballscrew turns. Two bushings join the ballscrew nut and gimbal

ATS PART NUMBER

ADU18-8ATSMRO

OEM PART NUMBER

ADU18-8

TECHNICAL SPECIFICATIONS

- FAA PMA PQ5315NM, Supplement 49
- Equivalent in fit, form and function to OEM assembly
- 1.5" x 1.0"
- Approximate Weight = 0.24 lbs.
- CRES bar material

AIRCRAFT APPLICATION

Boeing 737-600/700/700C/800/900/900ER/8/9
Boeing 757-200/200PF/200CB/300

27: FLIGHT CONTROLS

ELASTOMERIC BUSHING

ATA Chapter: 27-51



PRODUCT DESCRIPTION

Provides vibration dampening within the Fitting Sub-Assemblies - components of the trailing edge flap system

ATS PART NUMBER

SY10670ATSMRO

OEM PART NUMBER

SY10670

TECHNICAL SPECIFICATIONS

- FAA PMA PQ5315NM, Supplement 50.
- Equivalent in fit, form and function to OEM assembly
- 0.63" x 0.91" (1" Round Stock)
- Approximate Weight = 0.04 lbs.
- Stainless steel material

AIRCRAFT APPLICATION

Boeing 737-600/700/700C/800/900/900ER/8/9

HYDRAULIC FUSE HOUSING

ATA Chapter: 27-81, 29-11, 32-31, 78-34



PRODUCT DESCRIPTION

Precision machined tube that houses a piston, metering cone, metering body, piston spring, metering cylinder and other parts to satisfy operation parameters indicated for its application

Housing typically replaced during overhaul or rebuild of Flow Rate Fuse Assembly. Each fuse configuration has been designed to accommodate specific dimensional, weight and hydraulic interface requirements

ATS PART NUMBER

7-2882-4ATS

7-2882-5ATS

7-2882-6ATS

OEM PART NUMBER

7-2882-4

7-2882-5

7-2882-6

TECHNICAL SPECIFICATIONS

- FAA PMA PQ5315NM, Supplement 1
- Equivalent in fit, form and function to OEM assembly
- -4: 4.45-inch-Long x 1.75-inch diameter
- -5: 5.17-inch-Long x 1.75-inch diameter
- -6: 5.78-inch-Long x 1.75-inch diameter
- Approximate Weight = 0.41 lbs.
- Aluminum material

AIRCRAFT APPLICATION

Boeing 737-300/400/500/600/700/700C/800/900/900ER

27: FLIGHT CONTROLS

RETAINER – KRUEGER SEAL

ATA Chapter: 27-81, 57-56



PRODUCT DESCRIPTION

The Retainer secures a Krueger Flap Seal. During Flap extension and retraction, the Krueger Seal protects the Thrust Reverser from abrading the Krueger Flap

ATS PART NUMBER

114A1811-1ATSMRO
114A1811-2ATSMRO

OEM PART NUMBER

114A1811-1
114A1811-2

TECHNICAL SPECIFICATIONS

- FAA PMA PQ5315NM, Supplement 103
- Equivalent in fit, form and function to OEM part

AIRCRAFT APPLICATION

Boeing 737-600/700/700C/800/900/900ER

WEAR PAD – KRUEGER SEAL

ATA Chapter: 27-81, 57-56



PRODUCT DESCRIPTION

The Wear Pad fastens to the Krueger Seal Retainer. During Flap extension and retraction, the Krueger Seal assembly protects the Thrust Reverser from abrading the Krueger Flap

ATS PART NUMBER

114A1811-3ATSMRO

OEM PART NUMBER

114A1811-3

TECHNICAL SPECIFICATIONS

- FAA PMA PQ5315NM, Supplement 103
- Equivalent in fit, form and function to OEM part

AIRCRAFT APPLICATION

Boeing 737-600/700/700C/800/900/900ER