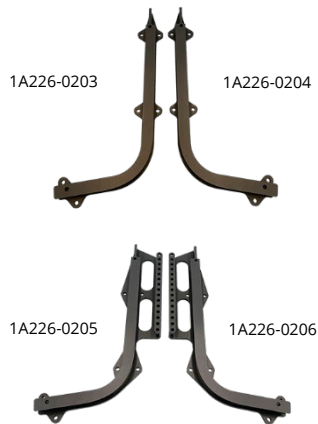


25: EQUIPMENT / FURNISHINGS

FLIGHT DECK SEAT TRACKS

ATA Chapter: 25-11, 53-10



PRODUCT DESCRIPTION

Shorter lead time and less cost replacement parts for flight deck seat tracks as compared to OEM components

ATS PART NUMBER

1A226-0201ATSMRO / 1A226-0202ATSMRO
1A226-0203ATSMRO / 1A226-0204ATSMRO
1A226-0205ATSMRO / 1A226-0206ATSMRO
1A296-0339ATSMRO / 1A296-0340ATSMRO

OEM PART NUMBER

1A226-0201 / 1A226-0202
1A226-0203 / 1A226-0204
1A226-0205 / 1A226-0206
1A296-0339 / 1A296-0340

TECHNICAL SPECIFICATIONS

- FAA PMA PQ5315NM, Supplement 59
- Equivalent in fit, form and function to OEM

AIRCRAFT APPLICATION

Boeing 737-600/700/700C/800/900/900ER/8/9

AIR OUTLET

ATA Chapter: 25-11



PRODUCT DESCRIPTION

Directs air in the cockpit in a downward and aft direction, away from the flight crew

ATS PART NUMBER

214A1118-12ATSMRO

OEM PART NUMBER

214A1118-12

TECHNICAL SPECIFICATIONS

- FAA PMA PQ5315NM, Supplement 78
- Equivalent in fit, form and function to OEM assembly

AIRCRAFT APPLICATION

Boeing 737-600/700/700C/800/900/900ER/8

AIR OUTLET

ATA Chapter: 25-11



PRODUCT DESCRIPTION

Air Outlet is designed to direct air into the cockpit in the downward and aft direction, away from flight crew

ATS PART NUMBER

214A1118-13ATSMRO

OEM PART NUMBER

214A1118-13

TECHNICAL SPECIFICATIONS

- FAA PMA PQ5315NM, Supplement 78
- Equivalent in fit, form and function to OEM assembly

AIRCRAFT APPLICATION

Boeing 737-600/-700/-800/-900/-900ER/8/9

25: EQUIPMENT / FURNISHINGS

BRACKET – FIRST OBSERVER SEAT

ATA Chapter: 25-11



PRODUCT DESCRIPTION

Located on the First Observer seat support installation, the bracket retains a magnet that assists in retaining the support assembly

ATS PART NUMBER

232A3504-28ATSMRO

OEM PART NUMBER

232A3504-28

TECHNICAL SPECIFICATIONS

- FAA PMA PQ5315NM, Supplement 97
- Equivalent in fit, form and function to OEM part

AIRCRAFT APPLICATION

Boeing 737-600/700/700C/800/900/900ER/8/9/8200

BRACKET ASSEMBLY

ATA Chapter: 25-11



PRODUCT DESCRIPTION

Pilot/first officer flight kit bag restraint bracket

ATS PART NUMBER

232A4398-2ATSMRO

OEM PART NUMBER

232A4398-2

TECHNICAL SPECIFICATIONS

- FAA PMA PQ5315NM, Supplement 46
- Equivalent in fit, form and function to OEM assembly

AIRCRAFT APPLICATION

Boeing 737-600/700/700C/800/900/900ER/8/9

PAD – FLIGHT DECK, FORWARD PANEL

ATA Chapter: 25-16



PRODUCT DESCRIPTION

Component of Flight Deck Console. Primarily act as wear surface for the pilot and first officer to rest their feet

ATS PART NUMBER

233A2374-1ATSMRO

233A2374-2ATSMRO

OEM PART NUMBER

233A2374-1

233A2374-2

TECHNICAL SPECIFICATIONS

- FAA PMA PQ5315NM, Supplement 71
- Equivalent in fit, form and function to OEM
- Material: 0.125" thick Foam

AIRCRAFT APPLICATION

Boeing 737-600/700/700C/800/900/900ER

25: EQUIPMENT / FURNISHINGS

DOUBLER - STOW BIN TORQUE TUBE COVER

ATA Chapter: 25-24, 25-28



PRODUCT DESCRIPTION

Installed on overhead stowage bins throughout airplanes with Boeing Sky Interior. The aluminum Doublers are installed, to prevent further damage, over the top of existing damaged torque tube covers where exposed composite fibers or failure of the cover is found

ATS PART NUMBER

412A7220-191GATSMRO
412A7220-192GATSMRO

OEM PART NUMBER

412A7220-191G
412A7220-192G

TECHNICAL SPECIFICATIONS

- FAA PMA PQ5315NM, Supplement 78.
- Equivalent in fit, form and function to OEM.
- Material: Aluminum Alloy

AIRCRAFT APPLICATION

Boeing 737-700/800/900ER/8/9

GALLEY RETAINER ASSEMBLIES

ATA Chapter: 25-31



PRODUCT DESCRIPTION

Fastens galley cabinet doors closed. Limited to 90° rotation

ATS PART NUMBER

2034100-3ATSMRO
2034100-4ATSMRO
984121-1-15ATSMRO

OEM PART NUMBER

2034100-3 L/H Quarter Turn Retainer
2034100-4 R/H Quarter Turn Retainer
984121-1-15

TECHNICAL SPECIFICATIONS

- FAA PMA PQ5315NM, Supplement 21 and 23
- Equivalent in fit, form and function to OEM assembly

AIRCRAFT APPLICATION

Boeing 737-700/800

GALLEY GUIDE ASSEMBLIES

ATA Chapter: 25-31



PRODUCT DESCRIPTION

Allows doors to open and slide into G3 and G4 Galley assemblies

ATS PART NUMBER

934023-1ATSMRO
934023-2ATSMRO

OEM PART NUMBER

934023-1
934023-2

TECHNICAL SPECIFICATIONS

- FAA PMA PQ5315NM, Supplement 21
- Equivalent in fit, form and function to OEM assembly
- Improved track and wheel to reduce wear

AIRCRAFT APPLICATION

Boeing 737-700

25: EQUIPMENT / FURNISHINGS

MAT – FWD LAVATORY

ATA Chapter: 25-40



1L400107-29BATSMRO



1L400107-119ATSMRO

PRODUCT DESCRIPTION

The Mats are installed in the Lavatory A floor pan. They function to provide a replaceable, slip-resistant, and decorative surface visible to passengers and crew

ATS PART NUMBER

1L400107-29BATSMRO
1L400107-119ATSMRO

OEM PART NUMBER

1L400107-29B
1L400107-119

TECHNICAL SPECIFICATIONS

- FAA PMA PQ5315NM, Supplement 106
- Equivalent in fit, form and function to OEM part

AIRCRAFT APPLICATION

1L400107-29BATSMRO:

Boeing 737-8

1L400107-119ATSMRO:

Boeing 737-800 Series/8

MAT – AFT LAVATORY

ATA Chapter: 25-40



1L400407-87BATSMRO



1L400407-117ATSMRO

PRODUCT DESCRIPTION

The PMA articles are installed into the floor pan of the Aft Lavatories D and E. Their function is to provide an aesthetic decorative, slip-resistant, and easily replaceable wear surface

ATS PART NUMBER

1L400407-87BATSMRO
1L400407-117ATSMRO

OEM PART NUMBER

1L400407-87B
1L400407-117

TECHNICAL SPECIFICATIONS

- FAA PMA PQ5315NM, Supplement 104
- Equivalent in fit, form and function to OEM part

AIRCRAFT APPLICATION

1L400407-87BATSMRO:

Boeing 737-8

1L400407-117ATSMRO:

Boeing 737-800/8

DOUBLER – LAVATORY B

ATA Chapter: 25-40



PRODUCT DESCRIPTION

The doubler is located on the outer wall of the Lavatory B. It bonds to the fiberglass skin of the lav wall and attaches to the forward outboard attachment block to provide supplemental damage and corrosion protection

ATS PART NUMBER

C23302-333-101ATSMRO

OEM PART NUMBER

C23302-333-101

TECHNICAL SPECIFICATIONS

- FAA PMA PQ5315NM, Supplement 82
- Equivalent in fit, form and function to OEM part

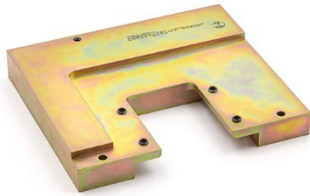
AIRCRAFT APPLICATION

Boeing 737-600/700/700C

25: EQUIPMENT / FURNISHINGS

ATTACHMENT BLOCK ASSEMBLY – LAVATORY B

ATA Chapter: 25-40



PRODUCT DESCRIPTION

Part attaches Rumbold Lavatory B module to the interior cabin floor (forward outboard attachment block assembly)

ATS PART NUMBER

C23302-341-003ATSMRO

OEM PART NUMBER

C23302-341-003

TECHNICAL SPECIFICATIONS

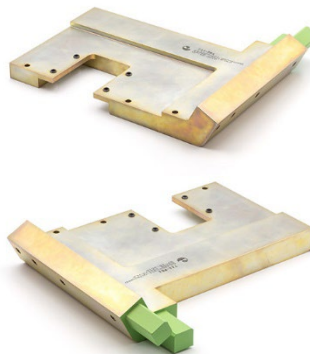
- FAA PMA PQ513NM, Supplement 16
- Manufactured from stainless steel for superior strength and comparable corrosion resistance
- Cadmium plated with a corrosion-inhibiting epoxy primer on all applicable mating surfaces
- Per-lavatory kit option

AIRCRAFT APPLICATION

Boeing 737-300/500/600/700/700C

ATTACHMENT BLOCK ASSEMBLY – LAVATORY B

ATA Chapter: 25-40



PRODUCT DESCRIPTION

Part attaches Rumbold Lavatory B module to the interior cabin floor (forward inboard attachment block assembly)

ATS PART NUMBER

C23302-351-007ATSMRO

OEM PART NUMBER

C23302-351-007

TECHNICAL SPECIFICATIONS

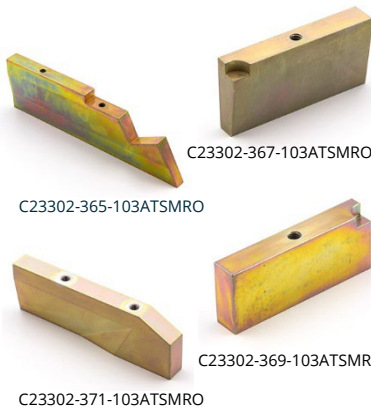
- FAA PMA PQ513NM, Supplement 16
- Manufactured from stainless steel for superior strength and comparable corrosion resistance
- Cadmium plated with a corrosion-inhibiting epoxy primer on all applicable mating surfaces
- Per-lavatory kit option

AIRCRAFT APPLICATION

Boeing 737-300/500/600/700/700C

FLOOR PANEL BLOCK ASSEMBLIES – LAVATORY B

ATA Chapter: 25-40



PRODUCT DESCRIPTION

Part attaches Rumbold Lavatory B module to the interior cabin floor (floor panel block assemblies)

ATS PART NUMBER

C23302-365-103ATSMRO

C23302-367-103ATSMRO

C23302-369-103ATSMRO

C23302-371-103ATSMRO

OEM PART NUMBER

C23302-365-103

C23302-367-103

C23302-369-103

C23302-371-103

TECHNICAL SPECIFICATIONS

- FAA PMA PQ513NM, Supplement 16
- Equivalent in fit, form and function to OEM assembly
- Manufactured from stainless steel for superior strength and comparable corrosion resistance
- Cadmium plated with a corrosion-inhibiting epoxy primer on all applicable mating surfaces
- Per-lavatory kit option

AIRCRAFT APPLICATION

Boeing 737-300/500/600/700/700C

25: EQUIPMENT / FURNISHINGS

CAPPING – LAV A and LAV B

ATA Chapter: 25-45, 25-46



PRODUCT DESCRIPTION

The Lav Capping fastens to the Lav A/B wall and acts as both a door frame closeout and a striker plate attachment that accepts the door latch

ATS PART NUMBER

C22102-264-007ATSMRO
C22302-655-005ATSMRO

OEM PART NUMBER

C22102-264-007
C22302-655-005

TECHNICAL SPECIFICATIONS

- FAA PMA PQ5315NM, Supplement 94
- Equivalent in fit, form and function to OEM part

AIRCRAFT APPLICATION

C22102-264-007ATSMRO:

Boeing 737-600/700/800

C22302-655-005ATSMRO:

Boeing 737-700

BRACKET ASSEMBLY – AFT CARGO COMPARTMENT

ATA Chapter: 25-52, 53-70



PRODUCT DESCRIPTION

Attachment point for Aft Cargo Compartment Bulkhead removable panel

ATS PART NUMBER

149A8118U29ATSMRO

OEM PART NUMBER

149A8118U29

TECHNICAL SPECIFICATIONS

- FAA PMA PQ5315NM, Supplement 52
- Equivalent in fit, form and function to OEM part
- Current OEM ICA information is applicable to parts

AIRCRAFT APPLICATION

Boeing 737-600/700/700C/800/900/900ER/8/9

SEAL – VERTICAL RIGHT HAND, FORWARD CARGO COMPARTMENT FORWARD BULKHEAD

ATA Chapter: 25-52



PRODUCT DESCRIPTION

Component of Bulkhead Pressure Relief Panel. Primarily act as closeout seal to mitigate risk of debris and fire exposure to the O2 Cylinder and Battery, along with restricting smoke penetration in the event of a fire

ATS PART NUMBER

284A6841-28ATSMRO

OEM PART NUMBER

284A6841-28

TECHNICAL SPECIFICATIONS

- FAA PMA PQ5315NM, Supplement 67.
- Equivalent in fit, form and function to OEM.
- Material: Silicone Foam Rubber.
- Stock Size: 0.125" x 2.80" x 14.50"

AIRCRAFT APPLICATION

Boeing 737-600/700/800/900/900ER

25: EQUIPMENT / FURNISHINGS

SEAL – VERTICAL LEFT HAND, FORWARD CARGO COMPARTMENT FORWARD BULKHEAD

ATA Chapter: 25-52



PRODUCT DESCRIPTION

Component of Bulkhead Pressure Relief Panel. Primarily act as closeout seal to mitigate risk of debris and fire exposure to the O2 Cylinder and Battery, along with restricting smoke penetration in the event of a fire

ATS PART NUMBER

284A6841-29ATSMRO

OEM PART NUMBER

284A6841-29

TECHNICAL SPECIFICATIONS

- FAA PMA PQ5315NM, Supplement 67.
- Equivalent in fit, form and function to OEM.
- Material: Silicone Foam Rubber.
- Stock Size: 0.125" x 2.80" x 14.50"

AIRCRAFT APPLICATION

Boeing 737-600/700/800/900/900ER

SEAL – HORIZONTAL, FORWARD CARGO COMPARTMENT FORWARD BULKHEAD

ATA Chapter: 25-52



PRODUCT DESCRIPTION

Component of Bulkhead Pressure Relief Panel. Primarily act as closeout seal to mitigate risk of debris and fire exposure to the O2 Cylinder and Battery, along with restricting smoke penetration in the event of a fire

ATS PART NUMBER

284A6841-49ATSMRO

OEM PART NUMBER

284A6841-49

TECHNICAL SPECIFICATIONS

- FAA PMA PQ5315NM, Supplement 67.
- Equivalent in fit, form and function to OEM.
- Material: Silicone Foam Rubber.
- Stock Size: 0.125" x 3.80" x 32.90"

AIRCRAFT APPLICATION

Boeing 737-600/700/800/900/900ER/8/9

25: EQUIPMENT / FURNISHINGS

CAPSTRIP

ATA Chapter: 25-52, 53-30

453A1611-16ATSMRO



453A1611-14ATSMRO

453A1611-17ATSMRO

PRODUCT DESCRIPTION

The Capstrips are located in the Fwd Cargo Compartment and fasten to floor panels and sidewall liners. They function to close out gaps, assisting in fire containment and preventing debris accumulation below the floor panels

ATS PART NUMBER

453A1611-14ATSMRO
453A1611-16ATSMRO
453A1611-17ATSMRO
453A1611-30ATSMRO
453A1611-31ATSMRO

OEM PART NUMBER

453A1611-14
453A1611-16
453A1611-17
453A1611-30
453A1611-31

TECHNICAL SPECIFICATIONS

- FAA PMA PQ5315NM, Supplement 99
- Equivalent in fit, form and function to OEM part

AIRCRAFT APPLICATION

453A1611-14ATSMRO:

Boeing 737-800/900/900ER/8/9

453A1611-16ATSMRO:

Boeing 737-800/8

453A1611-17ATSMRO:

Boeing 737-800/8

453A1611-30ATSMRO:

Boeing 737-800/900/900ER/8/9

453A1611-31ATSMRO:

Boeing 737-800/900/900ER/8/9



453A1611-30ATSMRO

453A1611-31ATSMRO

25: EQUIPMENT / FURNISHINGS

SHROUD - STA 731 BLKD

ATA Chapter: 25-52



453A2510-1ATSMRO



453A2510-2ATSMRO



453A2510-20ATSMRO

PRODUCT DESCRIPTION

The Shrouds are components of the aft cargo compartment forward bulkhead. They function to provide protection for the pneumatic ducting and act as a wear surface against any loose items during cargo loading or flight

ATS PART NUMBER

453A2510-1ATSMRO
453A2510-2ATSMRO
453A2510-20ATSMRO

OEM PART NUMBER

453A2510-1
453A2510-2
453A2510-20

TECHNICAL SPECIFICATIONS

- FAA PMA PQ5315NM, Supplement 106
- Equivalent in fit, form and function to OEM part

AIRCRAFT APPLICATION

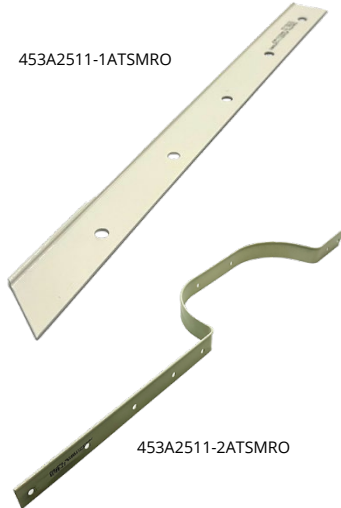
Boeing 737-600Series/700 Series/700C Series/
800 Series/900 Series/900ER Series/
8/9/8200

25: EQUIPMENT / FURNISHINGS

CAPSTRIP, AFT CARGO LINER

ATA Chapter: 25-52

453A2511-1ATSMRO



453A2511-2ATSMRO

PRODUCT DESCRIPTION

The PMA articles are components of the Aft Cargo Compartment STA 731 Bulkhead Lining Installation. They install on the vertical flange of the bulkhead liner and function as a closeout, preventing moisture and debris intrusion

ATS PART NUMBER

453A2511-1ATSMRO
453A2511-2ATSMRO

OEM PART NUMBER

453A2511-1
453A2511-2

TECHNICAL SPECIFICATIONS

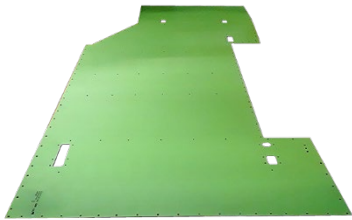
- FAA PMA PQ5315NM, Supplement 105
- Equivalent in fit, form and function to OEM part

AIRCRAFT APPLICATION

Boeing 737-700/800/8

AFT CARGO BAY DECK PANEL

ATA Chapter: 25-52



PRODUCT DESCRIPTION

Replacement for OEM Deck Panel located in Aft Cargo Bay

ATS PART NUMBER

453A2610-2ATSMRO

OEM PART NUMBER

453A2610-2

TECHNICAL SPECIFICATIONS

- FAA PMA PQ5315NM, Supplement 21
- Equivalent in fit, form and function to OEM assembly
- Drilled part to eliminate backshop time for hole details
- Clad aluminum sheet part
- Chemical conversion coating and corrosion-inhibiting primer
- Dimensions: 115.00" (292.10cm) long x 43.70" (110.99cm) wide x 0.08" (0.20cm) thick, 40.6 lbs. (18.4 kg)

AIRCRAFT APPLICATION

Boeing 737-700

25: EQUIPMENT / FURNISHINGS

CAPSTRIP

ATA Chapter: 25-52, 53-60

453A2611-4ATSMRO 453A2611-8ATSMRO



PRODUCT DESCRIPTION

The Capstrips are located in the Aft Cargo Compartment and fasten to floor panels, bulkhead liners, and sidewall liners. They function to close out gaps, assisting in fire containment and preventing debris accumulation below the floor panels

ATS PART NUMBER

453A2611-4ATSMRO
453A2611-8ATSMRO
453A2611-9ATSMRO
453A2611-24ATSMRO

OEM PART NUMBER

453A2611-4
453A2611-8
453A2611-9
453A2611-24

TECHNICAL SPECIFICATIONS

- FAA PMA PQ5315NM, Supplement 100
- Equivalent in fit, form and function to OEM part

AIRCRAFT APPLICATION

453A2611-4ATSMRO:

Boeing 737-600/700/700C/800/900/900ER/8/9/8200

453A2611-8ATSMRO:

Boeing 737-700/700C

453A2611-9ATSMRO:

Boeing 737-700/700C

453A2611-24ATSMRO:

Boeing 737-600/700/700C/800/900/900ER

CARGOTEK® CARGO BAY PROTECTION SOLUTIONS

ATA Chapter: 25-52



PRODUCT DESCRIPTION

Durable, thin floor lining system that adheres to original flooring providing protection. CargoTek® reduces cargo bay maintenance costs and cargo-related gate delays resulting from unexpected discovery of scratches, dents, and cracks on original equipment cargo bays. Complete CargoTek® floor protection solution includes liners for lower, mid, and upper floor panels

ATS PART NUMBER

Please contact our sales representative for part number applicability

TECHNICAL SPECIFICATIONS

- FAA Certified Design under STC # ST04081NY, PMA Obtained
- Made from impact-resistant Kydex® T
- Water/moisture resistant
- Precision tooled to completely cover pit floor while accommodating all hold-down locations and openings. All fasteners are completely covered by our pit liners
- UL Std 94 V-0 & 5V fire rating, meeting CFR 25.855 requirements

AIRCRAFT APPLICATION

Currently available for:

Airbus: A319-100, A320-200, A320neo, A321-200, A321neo

Option for:

Airbus: A321neo w/ Extra Fuel Tanks, A321LR, and A321XLR



Trusted Partners
Supporting Flight

25: EQUIPMENT / FURNISHINGS

BRACKET ASSEMBLY – FIRST AID KIT

ATA Chapter: 25-64



PRODUCT DESCRIPTION

The Bracket Assy mounts to Lavatories or Galleys and retains First Aid Kits within the cabin

ATS PART NUMBER

416N1014-129ATSMRO

OEM PART NUMBER

416N1014-129

TECHNICAL SPECIFICATIONS

- FAA PMA PQ5315NM, Supplement 102
- Equivalent in fit, form and function to OEM part

AIRCRAFT APPLICATION

Boeing 737-800/8/9

TIE DOWN ASSEMBLY – LH FWD ENTRY DOOR

ATA Chapter: 25-66, 53-42



141A5220-2, STA 312



141A5220-4, STA 344

PRODUCT DESCRIPTION

Attached to the floor structure located at the LH Fwd Entry Door to secure the Escape Slide during emergency evacuation

ATS PART NUMBER

141A5220-2ATSMRO

141A5220-4ATSMRO

OEM PART NUMBER

141A5220-2

141A5220-4

TECHNICAL SPECIFICATIONS

- FAA PMA PQ5315NM, Supplement 53
- Equivalent in fit, form and function to OEM part
- Current OEM ICA information is applicable to parts

AIRCRAFT APPLICATION

141A5220-2ATSMRO:

Boeing 737-600/700/700C/800/900/900ER/8/9

141A5220-4ATSMRO:

Boeing 737-600/700/800/900/900ER/8/9