

# 57: WINGS

## STIFFENER

ATA Chapter: 57-10



### PRODUCT DESCRIPTION

Acts as additional support to the LBL 24.92 vertical stiffener of the Wing Center Section Rear Spar Installation

### ATS PART NUMBER

111A1308U15ATSMRO

### OEM PART NUMBER

111A1308-15

### TECHNICAL SPECIFICATIONS

- FAA PMA PQ5315NM, Supplement 21
- Equivalent in fit, form and function to OEM assembly
- Undrilled part to facilitate back drilling

### AIRCRAFT APPLICATION

Boeing 737-600/700/700IGW/800/900/900ER

## STIFFENER – REAR SPAR, WING CENTER SECTION

ATA Chapter: 57-10



### PRODUCT DESCRIPTION

An aluminum fitting that is installed common to the Wing Center Section Rear Spar. Primarily acts as additional support to the RBL 24.92 vertical stiffener of the Wing Center Section Rear Spar Installation.

### ATS PART NUMBER

111A1308U16ATSMRO

### OEM PART NUMBER

111A1308U16

### TECHNICAL SPECIFICATIONS

- FAA PMA PQ5315NM, Supplement 64.
- Equivalent in fit, form and function to OEM.
- Material: Aluminum Alloy

### AIRCRAFT APPLICATION

Boeing 737-600/700/700C/800/900/900ER

## CLOSEOUT SKIN ASSEMBLY

ATA Chapter: 57-41



116A4411U1ATSMRO



116A4411U2ATSMRO

### PRODUCT DESCRIPTION

The purpose of the Closeout Skin Assembly is to “closeout” or extend the profile of the Leading Edge under the engine pylon so that no gap between the wing and the pylon fairing exists

### ATS PART NUMBER

116A4411U1ATSMRO

116A4411U2ATSMRO

### OEM PART NUMBER

116A4411U1

116A4411U2

### TECHNICAL SPECIFICATIONS

- FAA PMA PQ5315NM, Supplement 23
- Equivalent in fit, form and function to OEM part
- Provided as undrilled part for match drilling during installation
- 116A4411U1ATSMRO opposite to 116A4411U2ATSMRO

### AIRCRAFT APPLICATION

Boeing 737-600/700/700C/800/900/900ER

# 57: WINGS

## SUPPORT BRACKET ASSEMBLY – LWR INBD FIXED TE

ATA Chapter: 57-50



### PRODUCT DESCRIPTION

Support Bracket Assembly acts as an attachment for the tie rod that connects the lower fixed trailing edge access panel to the upper fixed trailing edge panel

### ATS PART NUMBER

115A2750Y1ATSMRO

### OEM PART NUMBER

115A2750-1, 115A2750Y1

### TECHNICAL SPECIFICATIONS

- FAA PMA PQ5315NM, Supplement 60
- Equivalent in fit, form and function to OEM assembly

### AIRCRAFT APPLICATION

Boeing 737-600/700/700C/800/900/900ER/8/9

## WIGGLE PLATE ASSEMBLY

ATA Chapter: 57-50



115A2781-3ATSMRO



115A2781-4ATSMRO

### PRODUCT DESCRIPTION

Provides attach points for an Inboard Fixed Trailing Edge Lower Wing Access Panel and allows the wing to flex without tearing out the fasteners on the access panel or the rear spar

### ATS PART NUMBER

115A2781-3ATSMRO

115A2781-4ATSMRO

### OEM PART NUMBER

115A2781-3

115A2781-4

### TECHNICAL SPECIFICATIONS

- FAA PMA PQ5315NM, Supplement 37.
- Equivalent in fit, form and function to OEM assembly.
- 115A2781-3ATSMRO opposite part to 115A2781-4ATSMRO

### AIRCRAFT APPLICATION

Boeing 737-600/700/800/900ER

## WIGGLE PLATE ASSEMBLY

ATA Chapter: 57-50



115A2781-13ATSMRO



115A2781-14ATSMRO

### PRODUCT DESCRIPTION

Provides attach points for an Inboard Fixed Trailing Edge Lower Wing Access Panel and allows the wing to flex without tearing out the fasteners on the access panel or the rear spar

### ATS PART NUMBER

115A2781-13ATSMRO

115A2781-14ATSMRO

### OEM PART NUMBER

115A2781-13

115A2781-14

### TECHNICAL SPECIFICATIONS

- FAA PMA PQ5315NM, Supplement 33.
- Equivalent in fit, form and function to OEM assembly.
- 115A2781-13ATSMRO opposite part to 115A2781-14ATSMRO

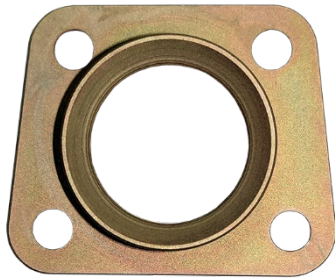
### AIRCRAFT APPLICATION

Boeing 737-600/700/800/900ER

# 57: WINGS

## BUSHING - ADJUST LINK

ATA Chapter: 57-53, 27-51



### PRODUCT DESCRIPTION

Component of the Flap Track Fairing Module that serves as an aft attach point to hold the #1/#2/#3/#6/#7/#8 Flap Track Fairing in place

### ATS PART NUMBER

113A9120-1ATSMRO

### OEM PART NUMBER

113A9120-1

### TECHNICAL SPECIFICATIONS

- Bushing - Adjust Link (P/N: 113A9120-1ATSMRO) is a detail that feeds into Adjust Link Assembly (P/N: 113A9305-5ATSMRO, Supplement 24)

### AIRCRAFT APPLICATION

Boeing 737-600/700/800/900/900ER/8

## ADJUST LINK ASSEMBLY

ATA Chapter: 57-53, 27-51



### PRODUCT DESCRIPTION

Component of the Flap Track Fairing Module that serves as an aft attach point to hold the #3 and #6 Flap Track Fairing in place

### ATS PART NUMBER

113A9305-5ATSMRO

### OEM PART NUMBER

113A9305-5

### TECHNICAL SPECIFICATIONS

- FAA PMA PQ5315NM, Supplement 24.
- Equivalent in fit, form and function to OEM assembly.
- 15.3 inches long x 6.8 inches wide x 1.9 inches deep.
- Approximate Weight = 1.65 lbs

### AIRCRAFT APPLICATION

Boeing 737-600/700/800/900/900ER/8

## ADJUST LINK

ATA Chapter: 57-53, 27-51



### PRODUCT DESCRIPTION

Component of the Flap Track Fairing Module that serves as an aft attach point to hold the #3 and #6 Flap Track Fairing in place

### ATS PART NUMBER

113A9305-7ATSMRO

### OEM PART NUMBER

113A9305-7

### TECHNICAL SPECIFICATIONS

- Adjust Link (P/N: 113A9305-7ATSMRO) is a detail that feeds into Adjust Link Assembly (P/N: 113A9305-5ATSMRO, Supplement 24)

### AIRCRAFT APPLICATION

Boeing 737-600/700/800/900/900ER/8

# 57: WINGS

## RETAINER

ATA Chapter: 57-53, 27-51



### PRODUCT DESCRIPTION

Component of the Flap Track Fairing Module that serves as an aft attach point to hold the #1/#2/#3/#6/#7/#8 Flap Track Fairing in place

### ATS PART NUMBER

69B14136-2ATSMRO

### OEM PART NUMBER

69B14136-2

### TECHNICAL SPECIFICATIONS

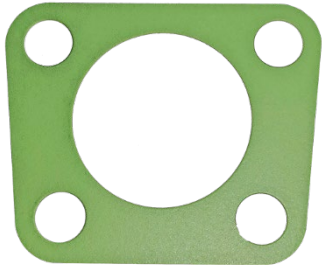
- Retainer (P/N: 69B14136-2ATSMRO) is a detail that feeds into Adjust Link Assembly (P/N: 113A9305-5ATSMRO, Supplement 24)

### AIRCRAFT APPLICATION

Boeing 737-600/700/800/900/900ER/8

## SHIM - LAMINATED

ATA Chapter: 57-53, 27-51



### PRODUCT DESCRIPTION

Component of the Flap Track Fairing Module that serves as an aft attach point to hold the #1/#2/#3/#6/#7/#8 Flap Track Fairing in place

### ATS PART NUMBER

69B14136-3ATSMRO

### OEM PART NUMBER

69B14136-3

### TECHNICAL SPECIFICATIONS

- Shim - Laminated (P/N: 69B14136-3ATSMRO) is a detail that feeds into Adjust Link Assembly (P/N: 113A9305-5ATSMRO, Supplement 24)

### AIRCRAFT APPLICATION

Boeing 737-600/700/800/900/900ER/8

© 2023 Aviation Technical Services – 1/2023



Trusted Partners  
Supporting Flight

For more information contact:

[Ben.Tschirhart@ATSmro.com](mailto:Ben.Tschirhart@ATSmro.com)

+1 425 319 7893

[ATSmro.com](http://ATSmro.com)