

57: WINGS

STIFFENER

ATA Chapter: 57-10



PRODUCT DESCRIPTION

Acts as additional support to the LBL 24.92 vertical stiffener of the Wing Center Section Rear Spar Installation

ATS PART NUMBER

111A1308U15ATSMRO

OEM PART NUMBER

111A1308-15

TECHNICAL SPECIFICATIONS

- FAA PMA PQ5315NM, Supplement 21
- Equivalent in fit, form and function to OEM assembly
- Undrilled part to facilitate back drilling

AIRCRAFT APPLICATION

Boeing 737-600/700/700IGW/800/900/900ER

STIFFENER – REAR SPAR, WING CENTER SECTION

ATA Chapter: 57-10



PRODUCT DESCRIPTION

An aluminum fitting that is installed common to the Wing Center Section Rear Spar. Primarily acts as additional support to the RBL 24.92 vertical stiffener of the Wing Center Section Rear Spar Installation.

ATS PART NUMBER

111A1308U16ATSMRO

OEM PART NUMBER

111A1308U16

TECHNICAL SPECIFICATIONS

- FAA PMA PQ5315NM, Supplement 64.
- Equivalent in fit, form and function to OEM.
- Material: Aluminum Alloy

AIRCRAFT APPLICATION

Boeing 737-600/-700/-700C/-800/-900/-900ER

CLOSEOUT SKIN ASSEMBLY

ATA Chapter: 57-41



116A4411U1ATSMRO



116A4411U2ATSMRO

PRODUCT DESCRIPTION

The purpose of the Closeout Skin Assembly is to “closeout” or extend the profile of the Leading Edge under the engine pylon so that no gap between the wing and the pylon fairing exists

ATS PART NUMBER

116A4411U1ATSMRO

116A4411U2ATSMRO

OEM PART NUMBER

116A4411U1

116A4411U2

TECHNICAL SPECIFICATIONS

- FAA PMA PQ5315NM, Supplement 23
- Equivalent in fit, form and function to OEM part
- Provided as undrilled part for match drilling during installation
- 116A4411U1ATSMRO opposite to 116A4411U2ATSMRO

AIRCRAFT APPLICATION

Boeing 737-600/700/700C/800/900/900ER

57: WINGS

SUPPORT BRACKET ASSEMBLY – LWR INBD FIXED TE

ATA Chapter: 57-50



PRODUCT DESCRIPTION

Support Bracket Assembly acts as an attachment for the tie rod that connects the lower fixed trailing edge access panel to the upper fixed trailing edge panel

ATS PART NUMBER

115A2750Y1ATSMRO

OEM PART NUMBER

115A2750-1, 115A2750Y1

TECHNICAL SPECIFICATIONS

- FAA PMA PQ5315NM, Supplement 60
- Equivalent in fit, form and function to OEM assembly

AIRCRAFT APPLICATION

Boeing 737-600/700/700C/800/900/900ER/
MAX8/MAX9

WIGGLE PLATE ASSEMBLY

ATA Chapter: 57-50



115A2781-13ATSMRO



115A2781-14ATSMRO

PRODUCT DESCRIPTION

Provides attach points for an Inboard Fixed Trailing Edge Lower Wing Access Panel and allows the wing to flex without tearing out the fasteners on the access panel or the rear spar

ATS PART NUMBER

115A2781-13ATSMRO
115A2781-14ATSMRO

OEM PART NUMBER

115A2781-13
115A2781-14

TECHNICAL SPECIFICATIONS

- FAA PMA PQ5315NM, Supplement 33.
- Equivalent in fit, form and function to OEM assembly.
- 115A2781-13ATSMRO opposite part to 115A2781-14ATSMRO

AIRCRAFT APPLICATION

Boeing 737-600/700/800/900ER

WIGGLE PLATE ASSEMBLY

ATA Chapter: 57-50



115A2781-3ATSMRO



115A2781-4ATSMRO

PRODUCT DESCRIPTION

Provides attach points for an Inboard Fixed Trailing Edge Lower Wing Access Panel and allows the wing to flex without tearing out the fasteners on the access panel or the rear spar

ATS PART NUMBER

115A2781-3ATSMRO
115A2781-4ATSMRO

OEM PART NUMBER

115A2781-3
115A2781-4

TECHNICAL SPECIFICATIONS

- FAA PMA PQ5315NM, Supplement 37.
- Equivalent in fit, form and function to OEM assembly.
- 115A2781-3ATSMRO opposite part to 115A2781-4ATSMRO

AIRCRAFT APPLICATION

Boeing 737-600/700/800/900ER

57: WINGS

ADJUST LINK

ATA Chapter: 57-53, 27-51



PRODUCT DESCRIPTION

Component of the Flap Track Fairing Module that serves as an aft attach point to hold the #3 and #6 Flap Track Fairing in place

ATS PART NUMBER

113A9305-7ATSMRO

OEM PART NUMBER

113A9305-7

TECHNICAL SPECIFICATIONS

- Adjust Link (P/N: 113A9305-7ATSMRO) is a detail that feeds into Adjust Link Assembly (P/N: 113A9305-5ATSMRO, Supplement 24)

AIRCRAFT APPLICATION

Boeing 737-600/700/800/900/900ER/MAX 8

ADJUST LINK ASSEMBLY

ATA Chapter: 57-53, 27-51



PRODUCT DESCRIPTION

Component of the Flap Track Fairing Module that serves as an aft attach point to hold the #3 and #6 Flap Track Fairing in place

ATS PART NUMBER

113A9305-5ATSMRO

OEM PART NUMBER

113A9305-5

TECHNICAL SPECIFICATIONS

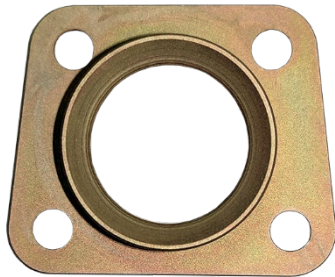
- FAA PMA PQ5315NM, Supplement 24.
- Equivalent in fit, form and function to OEM assembly.
- 15.3 inches long x 6.8 inches wide x 1.9 inches deep.
- Approximate Weight = 1.65 lbs

AIRCRAFT APPLICATION

Boeing 737-600/700/800/900/900ER/MAX 8

BUSHING - ADJUST LINK

ATA Chapter: 57-53, 27-51



PRODUCT DESCRIPTION

Component of the Flap Track Fairing Module that serves as an aft attach point to hold the #1/#2/#3/#6/#7/#8 Flap Track Fairing in place

ATS PART NUMBER

113A9120-1ATSMRO

OEM PART NUMBER

113A9120-1

TECHNICAL SPECIFICATIONS

- Bushing - Adjust Link (P/N: 113A9120-1ATSMRO) is a detail that feeds into Adjust Link Assembly (P/N: 113A9305-5ATSMRO, Supplement 24)

AIRCRAFT APPLICATION

Boeing 737-600/700/800/900/900ER/MAX 8

57: WINGS

RETAINER

ATA Chapter: 57-53, 27-51



PRODUCT DESCRIPTION

Component of the Flap Track Fairing Module that serves as an aft attach point to hold the #1/#2/#3/#6/#7/#8 Flap Track Fairing in place

ATS PART NUMBER

69B14136-2ATSMRO

OEM PART NUMBER

69B14136-2

TECHNICAL SPECIFICATIONS

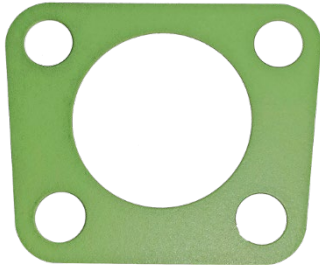
- Retainer (P/N: 69B14136-2ATSMRO) is a detail that feeds into Adjust Link Assembly (P/N: 113A9305-5ATSMRO, Supplement 24)

AIRCRAFT APPLICATION

Boeing 737-600/700/800/900/900ER/MAX 8

SHIM - LAMINATED

ATA Chapter: 57-53, 27-51



PRODUCT DESCRIPTION

Component of the Flap Track Fairing Module that serves as an aft attach point to hold the #1/#2/#3/#6/#7/#8 Flap Track Fairing in place

ATS PART NUMBER

69B14136-3ATSMRO

OEM PART NUMBER

69B14136-3

TECHNICAL SPECIFICATIONS

- Shim - Laminated (P/N: 69B14136-3ATSMRO) is a detail that feeds into Adjust Link Assembly (P/N: 113A9305-5ATSMRO, Supplement 24)

AIRCRAFT APPLICATION

Boeing 737-600/700/800/900/900ER/MAX 8