

25: EQUIPMENT / FURNISHINGS

AIR OUTLET

ATA Chapter: 25-11



PRODUCT DESCRIPTION

Directs air in the cockpit in a downward and aft direction, away from the flight crew

ATS PART NUMBER

214A1118-12ATSMRO

OEM PART NUMBER

214A1118-12

TECHNICAL SPECIFICATIONS

- FAA PMA PQ5315NM, Supplement 78
- Equivalent in fit, form and function to OEM assembly

AIRCRAFT APPLICATION

Boeing 737-600/700/700C/800/900/900ER/
MAX 8

AIR OUTLET

ATA Chapter: 25-11

PRODUCT DESCRIPTION

Air Outlet is designed to direct air into the cockpit in the downward and aft direction, away from flight crew

ATS PART NUMBER

214A1118-13ATSMRO

OEM PART NUMBER

214A1118-13

TECHNICAL SPECIFICATIONS

- FAA PMA PQ5315NM, Supplement 78
- Equivalent in fit, form and function to OEM assembly

AIRCRAFT APPLICATION

Boeing 737-600/-700/-800/-900/-900ER/
MAX 8/MAX 9

BRACKET ASSEMBLY

ATA Chapter: 25-11



PRODUCT DESCRIPTION

Pilot/first officer flight kit bag restraint bracket

ATS PART NUMBER

232A4398-2ATSMRO

OEM PART NUMBER

232A4398-2

TECHNICAL SPECIFICATIONS

- FAA PMA PQ5315NM, Supplement 46
- Equivalent in fit, form and function to OEM assembly

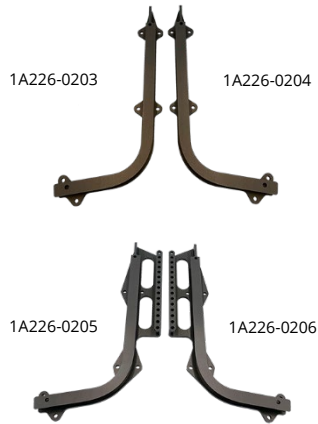
AIRCRAFT APPLICATION

Boeing 737-600/700/700C/800/900/900ER/
MAX 8/MAX 9

25: EQUIPMENT / FURNISHINGS

FLIGHT DECK SEAT TRACKS

ATA Chapter: 25-11, 53-10



PRODUCT DESCRIPTION

Shorter lead time and less cost replacement parts for flight deck seat tracks as compared to OEM components

ATS PART NUMBER

1A226-0201ATSMRO / 1A226-0202ATSMRO
1A226-0203ATSMRO / 1A226-0204ATSMRO
1A226-0205ATSMRO / 1A226-0206ATSMRO
1A296-0339ATSMRO / 1A296-0340ATSMRO

OEM PART NUMBER

1A226-0201 / 1A226-0202
1A226-0203 / 1A226-0204
1A226-0205 / 1A226-0206
1A296-0339 / 1A296-0340

TECHNICAL SPECIFICATIONS

- FAA PMA PQ5315NM, Supplement 59
- Equivalent in fit, form and function to OEM

AIRCRAFT APPLICATION

Boeing 737-600/700/700C/800/900/900ER/
MAX 8/MAX 9

PAD - FLIGHT DECK, FORWARD PANEL

ATA Chapter: 25-16

PRODUCT DESCRIPTION

Component of Flight Deck Console. Primarily act as wear surface for the pilot and first officer to rest their feet

ATS PART NUMBER

233A2374-1ATSMRO
233A2374-2ATSMRO

OEM PART NUMBER

233A2374-1
233A2374-2

TECHNICAL SPECIFICATIONS

- FAA PMA PQ5315NM, Supplement 71
- Equivalent in fit, form and function to OEM
- Material: 0.125" thick Foam

AIRCRAFT APPLICATION

Boeing 737-600/-700/-700C/-800/-900/-900ER

DOUBLER - STOW BIN TORQUE TUBE COVER

ATA Chapter: 25-24, 25-28



PRODUCT DESCRIPTION

Installed on overhead stowage bins throughout airplanes with Boeing Sky Interior. The aluminum Doublers are installed, to prevent further damage, over the top of existing damaged torque tube covers where exposed composite fibers or failure of the cover is found

ATS PART NUMBER

412A7220-191GATSMRO
412A7220-192GATSMRO

OEM PART NUMBER

412A7220-191G
412A7220-192G

TECHNICAL SPECIFICATIONS

- FAA PMA PQ5315NM, Supplement 78.
- Equivalent in fit, form and function to OEM.
- Material: Aluminum Alloy

AIRCRAFT APPLICATION

Boeing 737-700/-800/-900ER/MAX 8/MAX 9

25: EQUIPMENT / FURNISHINGS

GALLEY GUIDE ASSEMBLIES

ATA Chapter: 25-31



PRODUCT DESCRIPTION

Allows doors to open and slide into G3 and G4 Galley assemblies

ATS PART NUMBER

934023-1ATSMRO
934023-2ATSMRO

OEM PART NUMBER

934023-1
934023-2

TECHNICAL SPECIFICATIONS

- FAA PMA PQ5315NM, Supplement 21
- Equivalent in fit, form and function to OEM assembly
- Improved track and wheel to reduce wear

AIRCRAFT APPLICATION

Boeing 737-700

GALLEY RETAINER ASSEMBLIES

ATA Chapter: 25-31



PRODUCT DESCRIPTION

Fastens galley cabinet doors closed. Limited to 90° rotation

ATS PART NUMBER

2034100-3ATSMRO
2034100-4ATSMRO
984121-1-15ATSMRO

OEM PART NUMBER

2034100-3 L/H Quarter Turn Retainer
2034100-4 R/H Quarter Turn Retainer
984121-1-15

TECHNICAL SPECIFICATIONS

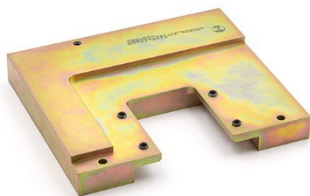
- FAA PMA PQ5315NM, Supplement 21
- Equivalent in fit, form and function to OEM assembly

AIRCRAFT APPLICATION

Boeing 737-700/800

ATTACHMENT BLOCK ASSEMBLY – LAVATORY B

ATA Chapter: 25-40



PRODUCT DESCRIPTION

Part attaches Rumbold Lavatory B module to the interior cabin floor (forward outboard attachment block assembly)

ATS PART NUMBER

C23302-341-003ATSMRO

OEM PART NUMBER

C23302-341-003

TECHNICAL SPECIFICATIONS

- FAA PMA PQ513NM, Supplement 16
- Manufactured from stainless steel for superior strength and comparable corrosion resistance
- Cadmium plated with a corrosion-inhibiting epoxy primer on all applicable mating surfaces
- Per-lavatory kit option

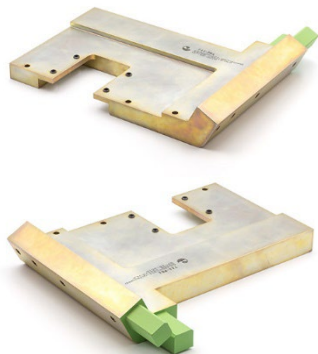
AIRCRAFT APPLICATION

Boeing 737-300/500/600/700/700C

25: EQUIPMENT / FURNISHINGS

ATTACHMENT BLOCK ASSEMBLY – LAVATORY B

ATA Chapter: 25-40



PRODUCT DESCRIPTION

Part attaches Rumbold Lavatory B module to the interior cabin floor (forward inboard attachment block assembly)

ATS PART NUMBER

C23302-351-007ATSMRO

OEM PART NUMBER

C23302-351-007

TECHNICAL SPECIFICATIONS

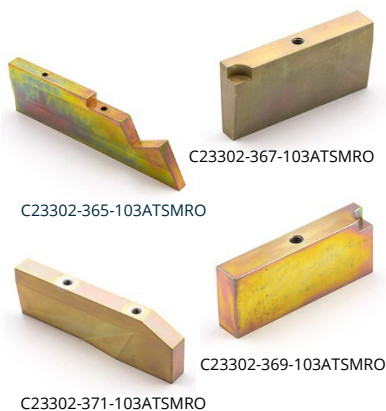
- FAA PMA PQ513NM, Supplement 16
- Manufactured from stainless steel for superior strength and comparable corrosion resistance
- Cadmium plated with a corrosion-inhibiting epoxy primer on all applicable mating surfaces
- Per-lavatory kit option

AIRCRAFT APPLICATION

Boeing 737-300/500/600/700/700C

FLOOR PANEL BLOCK ASSEMBLIES – LAVATORY B

ATA Chapter: 25-40



PRODUCT DESCRIPTION

Part attaches Rumbold Lavatory B module to the interior cabin floor (floor panel block assemblies)

ATS PART NUMBER

C23302-365-103ATSMRO

C23302-367-103ATSMRO

C23302-369-103ATSMRO

C23302-371-103ATSMRO

OEM PART NUMBER

C23302-365-103

C23302-367-103

C23302-369-103

C23302-371-103

TECHNICAL SPECIFICATIONS

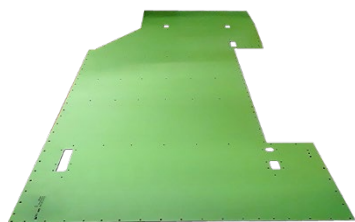
- FAA PMA PQ513NM, Supplement 16
- Equivalent in fit, form and function to OEM assembly
- Manufactured from stainless steel for superior strength and comparable corrosion resistance
- Cadmium plated with a corrosion-inhibiting epoxy primer on all applicable mating surfaces
- Per-lavatory kit option

AIRCRAFT APPLICATION

Boeing 737-300/500/600/700/700C

AFT CARGO BAY DECK PANEL

ATA Chapter: 25-52



PRODUCT DESCRIPTION

Replacement for OEM Deck Panel located in Aft Cargo Bay

ATS PART NUMBER

453A2610-2ATSMRO

OEM PART NUMBER

453A2610-2

TECHNICAL SPECIFICATIONS

- FAA PMA PQ5315NM, Supplement 21
- Equivalent in fit, form and function to OEM assembly
- Drilled part to eliminate backshop time for hole details
- Clad aluminum sheet part
- Chemical conversion coating and corrosion-inhibiting primer
- Dimensions: 115.00" (292.10cm) long x 43.70" (110.99cm) wide x 0.08" (0.20cm) thick, 40.6 lbs. (18.4 kg)

AIRCRAFT APPLICATION

Boeing 737-700

25: EQUIPMENT / FURNISHINGS

BRACKET ASSEMBLY – AFT CARGO COMPARTMENT

ATA Chapter: 25-52, 53-70



PRODUCT DESCRIPTION

Attachment point for Aft Cargo Compartment Bulkhead removable panel

ATS PART NUMBER

149A8118U29ATSMRO

OEM PART NUMBER

149A8118U29

TECHNICAL SPECIFICATIONS

- FAA PMA PQ5315NM, Supplement 52
- Equivalent in fit, form and function to OEM part
- Current OEM ICA information is applicable to parts

AIRCRAFT APPLICATION

Boeing 737-600/700/700C/800/900/900ER/MAX 8 & 9

CARGOTEK® CARGO BAY PROTECTION SOLUTIONS

ATA Chapter: 25-52



PRODUCT DESCRIPTION

Durable, thin floor lining system that adheres to original flooring providing protection. CargoTek® reduces cargo bay maintenance costs and cargo-related gate delays resulting from unexpected discovery of scratches, dents, cracks and/or corrosion on original equipment cargo bays

Complete CargoTek® solution options include pit liner, side wall protector, net anchor guard, stop block, blow out panel protector, door shield, anti-bump belt loader flag, and TSO tie-down strap pouch

ATS PART NUMBER

Please contact our sales representative for part number applicability

TECHNICAL SPECIFICATIONS

- FAA Certified Design under STC # ST04081NY, PMA Obtained
- Made from impact-resistant Kydex® T
- Water/moisture resistant
- Precision tooled to completely cover pit floor while accommodating all hold-down locations and openings. All fasteners are completely covered by our pit liners
- UL Std 94 V-0 & 5V fire rating, meeting CFR 25.855 requirements

AIRCRAFT APPLICATION

Boeing 737 NG/MAX 8
Airbus (ceo/neo): A319, A320, A321

SEAL – HORIZONTAL, FORWARD CARGO COMPARTMENT FORWARD BULKHEAD

ATA Chapter: 25-52

PRODUCT DESCRIPTION

Component of Bulkhead Pressure Relief Panel. Primarily act as closeout seal to mitigate risk of debris and fire exposure to the O2 Cylinder and Battery, along with restricting smoke penetration in the event of a fire

ATS PART NUMBER

284A6841-49ATSMRO

OEM PART NUMBER

284A6841-49

TECHNICAL SPECIFICATIONS

- FAA PMA PQ5315NM, Supplement 67.
- Equivalent in fit, form and function to OEM.
- Material: Silicone Foam Rubber.
- Stock Size: 0.125" x 3.80" x 32.90"

AIRCRAFT APPLICATION

Boeing 737-600/-700/-800/-900/-900ER/MAX 8/MAX 9



Trusted Partners
Supporting Flight

25: EQUIPMENT / FURNISHINGS

SEAL - VERTICAL LEFT HAND, FORWARD CARGO COMPARTMENT FORWARD BULKHEAD

ATA Chapter: 25-52

PRODUCT DESCRIPTION

Component of Bulkhead Pressure Relief Panel. Primarily act as closeout seal to mitigate risk of debris and fire exposure to the O2 Cylinder and Battery, along with restricting smoke penetration in the event of a fire

ATS PART NUMBER

284A6841-29ATSMRO

OEM PART NUMBER

284A6841-29

TECHNICAL SPECIFICATIONS

- FAA PMA PQ5315NM, Supplement 67.
- Equivalent in fit, form and function to OEM.
- Material: Silicone Foam Rubber.
- Stock Size: 0.125" x 2.80" x 14.50"

AIRCRAFT APPLICATION

Boeing 737-600/-700/-800/-900/-900ER

SEAL - VERTICAL RIGHT HAND, FORWARD CARGO COMPARTMENT FORWARD BULKHEAD

ATA Chapter: 25-52

PRODUCT DESCRIPTION

Component of Bulkhead Pressure Relief Panel. Primarily act as closeout seal to mitigate risk of debris and fire exposure to the O2 Cylinder and Battery, along with restricting smoke penetration in the event of a fire

ATS PART NUMBER

284A6841-28ATSMRO

OEM PART NUMBER

284A6841-28

TECHNICAL SPECIFICATIONS

- FAA PMA PQ5315NM, Supplement 67.
- Equivalent in fit, form and function to OEM.
- Material: Silicone Foam Rubber.
- Stock Size: 0.125" x 2.80" x 14.50"

AIRCRAFT APPLICATION

Boeing 737-600/-700/-800/-900/-900ER

TIE DOWN ASSEMBLY - LH FWD ENTRY DOOR

ATA Chapter: 25-66, 53-42



141A5220-2, STA 312



141A5220-4, STA 344

PRODUCT DESCRIPTION

Attached to the floor structure located at the LH Fwd Entry Door to secure the Escape Slide during emergency evacuation

ATS PART NUMBER

141A5220-2ATSMRO

141A5220-4ATSMRO

OEM PART NUMBER

141A5220-2

141A5220-4

TECHNICAL SPECIFICATIONS

- FAA PMA PQ5315NM, Supplement 53
- Equivalent in fit, form and function to OEM part
- Current OEM ICA information is applicable to parts

AIRCRAFT APPLICATION

141A5220-2ATSMRO:

Boeing 737-600/700/700C/800/900/900ER/
MAX 8 & 9

141A5220-4ATSMRO:

Boeing 737-600/700/800/900/900ER/MAX 8 & 9

© 2022 Aviation Technical Services - 4/2022



Trusted Partners
Supporting Flight

For more information contact:

Ben.Tschirhart@ATSmro.com

+1 425 319 7893

ATSmro.com