

ATS

PMA and STC PRODUCT CATALOG FALL 2021

Distribution through Wencor: sales@wencorgroup.com

TABLE OF CONTENTS

ATA Chapter	Chapter Name	Pages
25	EQUIPMENT / FURNISHINGS	25-1 thru 25-5
27	FLIGHT CONTROLS	27-1 thru 27-10
28	FUEL	28-1 thru 28-2
29	HYDRAULIC POWER	29-1
32	LANDING GEAR	32-1
33	LIGHTS	33-1
51	STANDARD PRACTICES AND STRUCTURES	51-1
52	DOORS	52-1 thru 52-2
53	FUSELAGE	53-1 thru 53-9
54	NACELLES / PYLONS	54-1
57	WINGS	57-1 thru 57-3
71	POWER PLANT	71-1 thru 71-3

25: EQUIPMENT / FURNISHINGS

AIR OUTLET

ATA Chapter: 25-11



PRODUCT DESCRIPTION

Directs air in the cockpit in a downward and aft direction, away from the flight crew

ATS PART NUMBER

214A1118-12ATSMRO

OEM PART NUMBER

214A1118-12

TECHNICAL SPECIFICATIONS

- FAA PMA PQ5315NM, Supplement 20
- Equivalent in fit, form and function to OEM assembly

AIRCRAFT APPLICATION

Boeing 737-600/700/700C/800/900/900ER/
MAX 8

BRACKET ASSEMBLY

ATA Chapter: 25-11



PRODUCT DESCRIPTION

Pilot/first officer flight kit bag restraint bracket

ATS PART NUMBER

232A4398-2ATSMRO

OEM PART NUMBER

232A4398-2

TECHNICAL SPECIFICATIONS

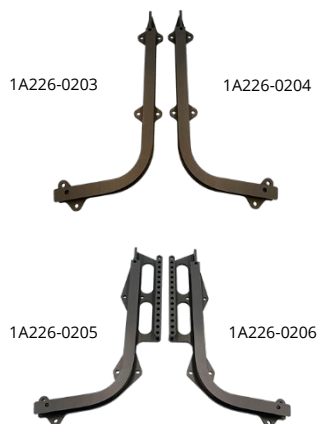
- FAA PMA PQ5315NM, Supplement 46
- Equivalent in fit, form and function to OEM assembly

AIRCRAFT APPLICATION

Boeing 737-600/700/700C/800/900/900ER/
MAX 8/MAX 9

FLIGHT DECK SEAT TRACKS

ATA Chapter: 25-11, 53-10



PRODUCT DESCRIPTION

Shorter lead time and less cost replacement parts for flight deck seat tracks as compared to OEM components

ATS PART NUMBER

1A226-0201ATSMRO / 1A226-0202ATSMRO
1A226-0203ATSMRO / 1A226-0204ATSMRO
1A226-0205ATSMRO / 1A226-0206ATSMRO
1A296-0339ATSMRO / 1A296-0340ATSMRO

OEM PART NUMBER

1A226-0201 / 1A226-0202
1A226-0203 / 1A226-0204
1A226-0205 / 1A226-0206
1A296-0339 / 1A296-0340

TECHNICAL SPECIFICATIONS

- FAA PMA PQ5315NM, Supplement 59
- Equivalent in fit, form and function to OEM

AIRCRAFT APPLICATION

Boeing 737-600/700/700C/800/900/900ER/
MAX 8/MAX 9

25: EQUIPMENT / FURNISHINGS

GALLEY GUIDE ASSEMBLIES

ATA Chapter: 25-31



PRODUCT DESCRIPTION

Allows doors to open and slide into G3 and G4 Galley assemblies

ATS PART NUMBER

934023-1ATSMRO
934023-2ATSMRO

OEM PART NUMBER

934023-1
934023-2

TECHNICAL SPECIFICATIONS

- FAA PMA PQ5315NM, Supplement 21
- Equivalent in fit, form and function to OEM assembly
- Improved track and wheel to reduce wear

AIRCRAFT APPLICATION

Boeing 737-700

GALLEY RETAINER ASSEMBLIES

ATA Chapter: 25-31



PRODUCT DESCRIPTION

Fastens galley cabinet doors closed. Limited to 90° rotation

ATS PART NUMBER

2034100-3ATSMRO
2034100-4ATSMRO
984121-1-15ATSMRO

OEM PART NUMBER

2034100-3 L/H Quarter Turn Retainer
2034100-4 R/H Quarter Turn Retainer
984121-1-15

TECHNICAL SPECIFICATIONS

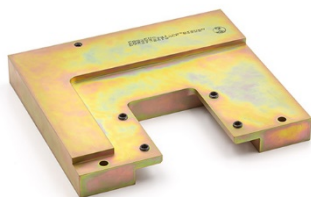
- FAA PMA PQ5315NM, Supplement 21
- Equivalent in fit, form and function to OEM assembly

AIRCRAFT APPLICATION

Boeing 737-700/800

ATTACHMENT BLOCK ASSEMBLY – LAVATORY B

ATA Chapter: 25-40



PRODUCT DESCRIPTION

Part attaches Rumbold Lavatory B module to the interior cabin floor (forward outboard attachment block assembly)

ATS PART NUMBER

C23302-341-003ATSMRO

OEM PART NUMBER

C23302-341-003

TECHNICAL SPECIFICATIONS

- FAA PMA PQ513NM, Supplement 16
- Manufactured from stainless steel for superior strength and comparable corrosion resistance
- Cadmium plated with a corrosion-inhibiting epoxy primer on all applicable mating surfaces
- Per-lavatory kit option

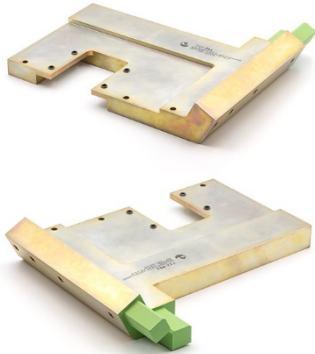
AIRCRAFT APPLICATION

Boeing 737-300/500/600/700/700C

25: EQUIPMENT / FURNISHINGS

ATTACHMENT BLOCK ASSEMBLY – LAVATORY B

ATA Chapter: 25-40



PRODUCT DESCRIPTION

Part attaches Rumbold Lavatory B module to the interior cabin floor (forward inboard attachment block assembly)

ATS PART NUMBER

C23302-351-007ATSMRO

OEM PART NUMBER

C23302-351-007

TECHNICAL SPECIFICATIONS

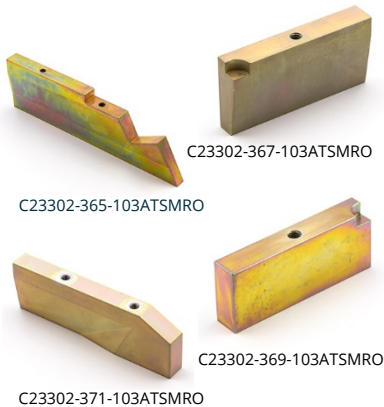
- FAA PMA PQ513NM, Supplement 16
- Manufactured from stainless steel for superior strength and comparable corrosion resistance
- Cadmium plated with a corrosion-inhibiting epoxy primer on all applicable mating surfaces
- Per-lavatory kit option

AIRCRAFT APPLICATION

Boeing 737-300/500/600/700/700C

FLOOR PANEL BLOCK ASSEMBLIES – LAVATORY B

ATA Chapter: 25-40



PRODUCT DESCRIPTION

Part attaches Rumbold Lavatory B module to the interior cabin floor (floor panel block assemblies)

ATS PART NUMBER

C23302-365-103ATSMRO

C23302-367-103ATSMRO

C23302-369-103ATSMRO

C23302-371-103ATSMRO

OEM PART NUMBER

C23302-365-103

C23302-367-103

C23302-369-103

C23302-371-103

TECHNICAL SPECIFICATIONS

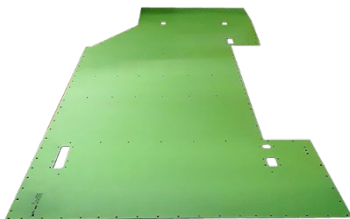
- FAA PMA PQ513NM, Supplement 16
- Equivalent in fit, form and function to OEM assembly
- Manufactured from stainless steel for superior strength and comparable corrosion resistance
- Cadmium plated with a corrosion-inhibiting epoxy primer on all applicable mating surfaces
- Per-lavatory kit option

AIRCRAFT APPLICATION

Boeing 737-300/500/600/700/700C

AFT CARGO BAY DECK PANEL

ATA Chapter: 25-52



PRODUCT DESCRIPTION

Replacement for OEM Deck Panel located in Aft Cargo Bay

ATS PART NUMBER

453A2610-2ATSMRO

OEM PART NUMBER

453A2610-2

TECHNICAL SPECIFICATIONS

- FAA PMA PQ5315NM, Supplement 21
- Equivalent in fit, form and function to OEM assembly
- Drilled part to eliminate backshop time for hole details
- Clad aluminum sheet part
- Chemical conversion coating and corrosion-inhibiting primer
- Dimensions: 115.00" (292.10cm) long x 43.70" (110.99cm) wide x 0.08" (0.20cm) thick, 40.6 lbs. (18.4 kg)

AIRCRAFT APPLICATION

Boeing 737-700

25: EQUIPMENT / FURNISHINGS

BRACKET ASSEMBLY – AFT CARGO COMPARTMENT

ATA Chapter: 25-52, 53-70



PRODUCT DESCRIPTION

Attachment point for Aft Cargo Compartment Bulkhead removable panel

ATS PART NUMBER

149A8118U29ATSMRO

OEM PART NUMBER

149A8118U29

TECHNICAL SPECIFICATIONS

- FAA PMA PQ5315NM, Supplement 52
- Equivalent in fit, form and function to OEM part
- Current OEM ICA information is applicable to parts

AIRCRAFT APPLICATION

Boeing 737-600/700/700C/800/900/900ER/
MAX 8 & 9

CARGOTEK® CARGO BAY PROTECTION SOLUTIONS

ATA Chapter: 25-52



PRODUCT DESCRIPTION

Durable, thin floor lining system that adheres to original flooring providing protection. CargoTek® reduces cargo bay maintenance costs and cargo-related gate delays resulting from unexpected discovery of scratches, dents, cracks and/or corrosion on original equipment cargo bays

Complete CargoTek® solution options include pit liner, side wall protector, net anchor guard, stop block, blow out panel protector, door shield, anti-bump belt loader flag, and TSO tie-down strap pouch

ATS PART NUMBER

Please contact our sales representative for part number applicability

TECHNICAL SPECIFICATIONS

- FAA Certified Design under STC # ST04081NY, PMA Obtained
- Made from impact-resistant Kydex® T
- Water/moisture resistant
- Precision tooled to completely cover pit floor while accommodating all hold-down locations and openings. All fasteners are completely covered by our pit liners
- UL Std 94 V-0 & 5V fire rating, meeting CFR 25.855 requirements

AIRCRAFT APPLICATION

Boeing 737 NG/MAX 8
Airbus (ceo/neo): A319, A320, A321

25: EQUIPMENT / FURNISHINGS

TIE DOWN ASSEMBLY – LH FWD ENTRY DOOR

ATA Chapter: 25-66, 53-42



141A5220-2, STA 312



141A5220-4, STA 344

PRODUCT DESCRIPTION

Attached to the floor structure located at the LH Fwd Entry Door to secure the Escape Slide during emergency evacuation

ATS PART NUMBER

141A5220-2ATSMRO
141A5220-4ATSMRO

OEM PART NUMBER

141A5220-2
141A5220-4

TECHNICAL SPECIFICATIONS

- FAA PMA PQ5315NM, Supplement 53
- Equivalent in fit, form and function to OEM part
- Current OEM ICA information is applicable to parts

AIRCRAFT APPLICATION

141A5220-2ATSMRO:

Boeing 737-600/700/700C/800/900/900ER/
MAX 8 & 9

141A5220-4ATSMRO:

Boeing 737-600/700/800/900/900ER/MAX 8 & 9

27: FLIGHT CONTROLS

HYDRAULIC FUSE HOUSING

ATA Chapter: 27-32



PRODUCT DESCRIPTION

Component housing can be installed on separate Flow Rate Fuse assemblies. Contains parts that make a hydraulic fuse housing.

ATS PART NUMBER

7-1462-1ATS

OEM PART NUMBER

7-1462-1

TECHNICAL SPECIFICATIONS

- FAA PMA PQ5315NM, Supplement 3.
- Equivalent in fit, form and function to OEM assembly
- 2-7680 and 2-7681
- 3.76 inches long x 0.93 inches diameter
- Approximate Weight = 0.21 lbs.
- Stainless steel material

AIRCRAFT APPLICATION

Boeing 737-
300/400/500/600/700/700C/800/900/
900ER
Boeing 757-200/200PF/300
Boeing 767-200/300/300F/400ER
Boeing 777-200/200LR/300/300ER/F Series

ADJUST LINK

ATA Chapter: 27-51, 57-53



PRODUCT DESCRIPTION

Component of the Flap Track Fairing Module that serves as an aft attach point to hold the #3 and #6 Flap Track Fairing in place

ATS PART NUMBER

113A9305-7ATSMRO

OEM PART NUMBER

113A9305-7

TECHNICAL SPECIFICATIONS

- Adjust Link (P/N: 113A9305-7ATSMRO) is a detail that feeds into Adjust Link Assembly (P/N: 113A9305-5ATSMRO, Supplement 24)

AIRCRAFT APPLICATION

Boeing 737-600/700/800/900/900ER/MAX 8

ADJUST LINK ASSEMBLY

ATA Chapter: 27-51, 57-53



PRODUCT DESCRIPTION

Component of the Flap Track Fairing Module that serves as an aft attach point to hold the #3 and #6 Flap Track Fairing in place

ATS PART NUMBER

113A9305-5ATSMRO

OEM PART NUMBER

113A9305-5

TECHNICAL SPECIFICATIONS

- FAA PMA PQ5315NM, Supplement 24.
- Equivalent in fit, form and function to OEM assembly.
- 15.3 inches long x 6.8 inches wide x 1.9 inches deep.
- Approximate Weight = 1.65 lbs

AIRCRAFT APPLICATION

Boeing 737-600/700/800/900/900ER/MAX 8

27: FLIGHT CONTROLS

ADJUST LINK ASSEMBLY – POSITIONS #1, #2, #7 and #8

ATA Chapter: 27-51



113A9105-5

PRODUCT DESCRIPTION

Component of the Flap Track Fairing Module that serves as an aft attach point to hold the corresponding Flap Track Fairing in place

P/N: 113A9105-5ATSMRO holds #1 and #8

P/N: 113A9205-5ATSMRO holds #2 and #7

ATS PART NUMBER

113A9105-5ATSMRO

113A9205-5ATSMRO

OEM PART NUMBER

113A9105-5

113A9205-5



113A9205-5

TECHNICAL SPECIFICATIONS

- FAA PMA PQ5315NM, Supplement 42.
- Equivalent in fit, form and function to OEM assembly.

- Aluminum material

113A9105-5:

- 13.45 inches long x 6.77 inches wide x 1.90 inches deep.
- Approximate Weight = 1.45 lbs.

113A9205-5:

- 13.74 inches long x 7.16 inches wide x 1.90 inches deep.
- Approximate Weight = 1.50 lbs.

AIRCRAFT APPLICATION

Boeing 737-600/700/800/900/900ER/MAX 8

ADJUST LINK – POSITIONS #1, #2, #7 and #8

ATA Chapter: 27-51



113A9105-7

PRODUCT DESCRIPTION

Component of the Flap Track Fairing Module that serves as an aft attach point to hold the corresponding Flap Track Fairing in place

P/N: 113A9105-7ATSMRO holds #1 and #8

P/N: 113A9205-7ATSMRO holds #2 and #7

ATS PART NUMBER

113A9105-7ATSMRO

113A9205-7ATSMRO

OEM PART NUMBER

113A9105-7

113A9205-7



TECHNICAL SPECIFICATIONS

- FAA PMA PQ5315NM, Supplement 42.
- Equivalent in fit, form and function to OEM assembly.

- Aluminum material

113A9105-7:

- 13.45 inches long x 6.77 inches wide x 1.90 inches deep.
- Approximate Weight = 1.45 lbs.

113A9205-7:

- 13.74 inches long x 7.16 inches wide x 1.90 inches deep.
- Approximate Weight = 1.50 lbs.

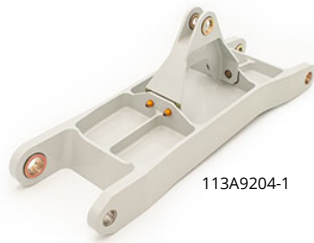
AIRCRAFT APPLICATION

Boeing 737-600/700/800/900/900ER/MAX 8

27: FLIGHT CONTROLS

ATTACH BEAM ASSEMBLY – POSITIONS #2 and #7

ATA Chapter: 27-51



113A9204-1



113A9204-2

PRODUCT DESCRIPTION

Component of the Flap Track Fairing Module that serves as an aft attach point to hold the corresponding Flap Track Fairing in place

P/N: 113A9204-1ATSMRO holds #2

P/N: 113A9204-2ATSMRO holds #7

ATS PART NUMBER

113A9204-1ATSMRO

113A9204-2ATSMRO

OEM PART NUMBER

113A9204-1

113A9204-2

TECHNICAL SPECIFICATIONS

- FAA PMA PQ5315NM, Supplement 41
- Equivalent in fit, form and function to OEM assembly
- 15.94-inches-long x 5.17-inches-wide x 6.01-inches-deep
- Approximate Weight = 3.40 lbs.
- Aluminum material

AIRCRAFT APPLICATION

Boeing 737-600/700/700C/800/900/900ER/
MAX 8

ATTACH BEAM ASSEMBLY – POSITIONS #1 and #8

ATA Chapter: 27-51



113A9104-1



113A9104-2

PRODUCT DESCRIPTION

Component of the Flap Track Fairing Module that serves as an aft attach point to hold the corresponding Flap Track Fairing in place

P/N: 113A9104-1ATSMRO holds #1

P/N: 113A9104-2ATSMRO holds #8

ATS PART NUMBER

113A9104-1ATSMRO

113A9104-2ATSMRO

OEM PART NUMBER

113A9104-1

113A9104-2

TECHNICAL SPECIFICATIONS

- FAA PMA PQ5315NM, Supplement 41
- Equivalent in fit, form and function to OEM assembly
- 13.34-inches-long x 5.14-inches-wide x 2.76-inches-deep
- Approximate Weight = 2.48 lbs.
- Aluminum material

AIRCRAFT APPLICATION

Boeing 737-600/700/700C/800/900/900ER/
MAX 8

27: FLIGHT CONTROLS

ATTACH BEAM ASSEMBLY – POSITIONS #3 and #6

ATA Chapter: 27-51



PRODUCT DESCRIPTION

Component of the Flap Track Fairing Module that serves as an aft attach point to hold the #3 and #6 Flap Track Fairings in place

ATS PART NUMBER

113A9304-1ATSMRO

OEM PART NUMBER

113A9304-1

TECHNICAL SPECIFICATIONS

- FAA PMA PQ5315NM, Supplement 23
- Equivalent in fit, form and function to OEM assembly
- 11.31-inches-long x 5.07-inches-wide x 1.64- inches-deep
- Approximate Weight = 2.04 lbs.
- Aluminum material

AIRCRAFT APPLICATION

Boeing 737-600/700/700C/800/900/900ER/
MAX 8

ATTACH BEAM – POSITIONS #1 and #8

ATA Chapter: 27-51



113A9104-3



113A9104-4

PRODUCT DESCRIPTION

Component of the Flap Track Fairing Module that serves as an aft attach point to hold the corresponding Flap Track Fairing in place

P/N: 113A9104-3ATSMRO holds #1

P/N: 113A9104-4ATSMRO holds #8

ATS PART NUMBER

113A9104-3ATSMRO

113A9104-4ATSMRO

OEM PART NUMBER

113A9104-3

113A9104-4

TECHNICAL SPECIFICATIONS

- FAA PMA PQ5315NM, Supplement 41
- Equivalent in fit, form and function to OEM assembly
- 13.34-inches-long x 5.14-inches-wide x 2.76-inches-deep
- Approximate Weight = 2.48 lbs.
- Aluminum material

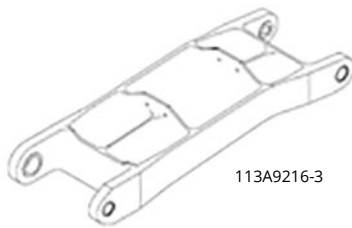
AIRCRAFT APPLICATION

Boeing 737-600/700/700C/800/900/900ER/
MAX 8

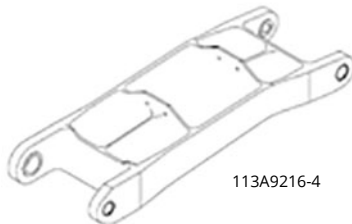
27: FLIGHT CONTROLS

ATTACH BEAM – POSITIONS #2 and #7

ATA Chapter: 27-51



113A9216-3



113A9216-4

PRODUCT DESCRIPTION

Component of the Flap Track Fairing Module that serves as an aft attach point to hold the corresponding Flap Track Fairing in place

P/N: 113A9216-3ATSMRO holds #2

P/N: 113A9216-4ATSMRO holds #7

ATS PART NUMBER

113A9216-3ATSMRO

113A9216-4ATSMRO

OEM PART NUMBER

113A9216-3

113A9216-4

TECHNICAL SPECIFICATIONS

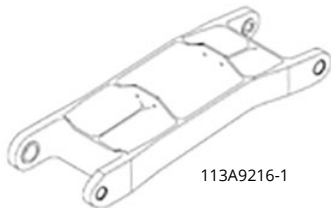
- FAA PMA PQ5315NM, Supplement 41
- Equivalent in fit, form and function to OEM assembly
- 15.70-inches-long x 5.17-inches-wide x 2.60-inches-deep.
- Approximate Weight = 3.40 lbs.
- Aluminum material

AIRCRAFT APPLICATION

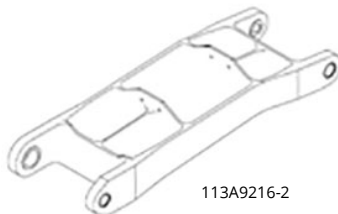
Boeing 737-600/700/700C/800/900/900ER/
MAX 8

BEAM ASSEMBLY – POSITIONS #2 and #7

ATA Chapter: 27-51



113A9216-1



113A9216-2

PRODUCT DESCRIPTION

Component of the Flap Track Fairing Module that serves as an aft attach point to hold the corresponding Flap Track Fairing in place

P/N: 113A9216-1ATSMRO holds #2

P/N: 113A9216-2ATSMRO holds #7

ATS PART NUMBER

113A9216-1ATSMRO

113A9216-2ATSMRO

OEM PART NUMBER

113A9216-1

113A9216-2

TECHNICAL SPECIFICATIONS

- FAA PMA PQ5315NM, Supplement 41
- Equivalent in fit, form and function to OEM assembly
- 15.70-inches-long x 5.17-inches-wide x 2.60-inches-deep.
- Approximate Weight = 3.40 lbs.
- Aluminum material

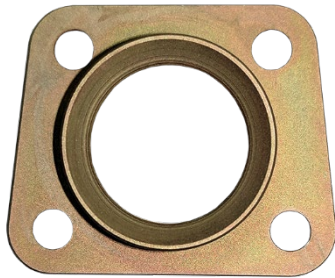
AIRCRAFT APPLICATION

Boeing 737-600/700/700C/800/900/900ER/
MAX 8

27: FLIGHT CONTROLS

BUSHING - ADJUST LINK

ATA Chapter: 27-51, 57-53



PRODUCT DESCRIPTION

Component of the Flap Track Fairing Module that serves as an aft attach point to hold the #1/#2/#3/#6/#7/#8 Flap Track Fairing in place

ATS PART NUMBER

113A9120-1ATSMRO

OEM PART NUMBER

113A9120-1

TECHNICAL SPECIFICATIONS

- Bushing - Adjust Link (P/N: 113A9120-1ATSMRO) is a detail that feeds into Adjust Link Assembly (P/N: 113A9305-5ATSMRO, Supplement 24)

AIRCRAFT APPLICATION

Boeing 737-600/700/800/900/900ER/MAX 8

BUSHING - POSITIONS #1, #2, #3, #6, #7 and #8

ATA Chapter: 27-51



113A9309-1



113A9209-1

PRODUCT DESCRIPTION

Component of the Flap Track Fairing Module that serves as an aft attach point to hold the corresponding Flap Track Fairings in place

P/N: 113A9309-1ATSMRO holds #3 and #6

P/N: 113A9209-1ATSMRO holds #1, #2, #7 and #8

ATS PART NUMBER

113A9309-1ATSMRO

113A9209-1ATSMRO

OEM PART NUMBER

113A9309-1

113A9209-1

TECHNICAL SPECIFICATIONS

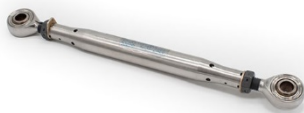
- FAA PMA PQ5315NM, Supplement 43
- Equivalent in fit, form and function to OEM assembly
- Annealed Bar material
- 113A9309-1:**
 - 9.46-inches-long x 0.686 inches diameter
 - Approximate Weight = 0.26 lbs.
- 113A9209-1:**
 - 8.72-inches-long x 0.874 inches diameter
 - Approximate Weight = 0.41 lbs.

AIRCRAFT APPLICATION

Boeing 737-600/700/700C/800/900/900ER/MAX 8

DRIVE ROD ASSEMBLY and ADJUST ROD ASSEMBLY

ATA Chapter: 27-51



113A9306-4



113A9307-4

PRODUCT DESCRIPTION

Components of the Flap Track Fairing Module that serves as an aft attach point to hold Flap Track Fairing in place

Both Drive Rod Assembly (P/N: 113A9306-4ATSMRO) and Adjust Rod Assembly (P/N: 113A9307-4ATSMRO) hold #3 and #6

ATS PART NUMBER

113A9306-4ATSMRO

113A9307-4ATSMRO

OEM PART NUMBER

113A9306-1, 113A9306-4

113A9307-1, 113A9307-4

TECHNICAL SPECIFICATIONS

- FAA PMA PQ5315NM, Supplement 51
- Equivalent in fit, form and function to OEM assembly
- 113A9306-4:**
 - 9.76 inches long x 0.675 inches diameter
 - Approximate Weight = 0.44 lbs.
- 113A9307-4:**
 - 10.89 inches long x 0.675 inches diameter
 - Approximate Weight = 0.46 lbs.

AIRCRAFT APPLICATION

Boeing 737-600/700/700C/800/900/900ER/MAX 8/MAX 9

27: FLIGHT CONTROLS

ELASTOMERIC BUSHING

ATA Chapter: 27-51



PRODUCT DESCRIPTION

Provides vibration dampening within the Fitting Sub-Assemblies - components of the trailing edge flap system

ATS PART NUMBER

SY10670ATSMRO

OEM PART NUMBER

SY10670

TECHNICAL SPECIFICATIONS

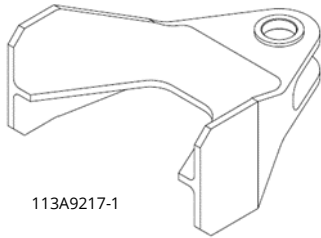
- FAA PMA PQ5315NM, Supplement 50.
- Equivalent in fit, form and function to OEM assembly
- 0.63" x 0.91" (1" Round Stock)
- Approximate Weight = 0.04 lbs.
- Stainless steel material

AIRCRAFT APPLICATION

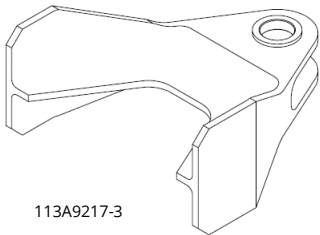
Boeing 737-600/700/700C/800/900/900ER/
MAX 8

FITTING ASSEMBLY - POSITIONS #2 and #7

ATA Chapter: 27-51



113A9217-1



113A9217-3

PRODUCT DESCRIPTION

Component of the Flap Track Fairing Module that serves as an aft attach point to hold the #2 and #7 Flap Track Fairing in place

ATS PART NUMBER

113A9217-1ATSMRO
113A9217-3ATSMRO

OEM PART NUMBER

113A9217-1
113A9217-3

TECHNICAL SPECIFICATIONS

- FAA PMA PQ5315NM, Supplement 41
- Equivalent in fit, form and function to OEM assembly
- 4.37-inches-long x 4.24-inches-wide x 2.10-inches-deep.
- Aluminum material

AIRCRAFT APPLICATION

Boeing 737-600/700/700C/800/900/900ER/
MAX 8

27: FLIGHT CONTROLS

FITTING SUB-ASSEMBLY

ATA Chapter: 27-51



PRODUCT DESCRIPTION

Serves as an attach point for the forward fairing section, connecting it to the mechanism on the interior of the fairing.

ATS PART NUMBER

113A1350-3ATSMRO

OEM PART NUMBER

113A1350-3

TECHNICAL SPECIFICATIONS

- FAA PMA PQ5315NM, Supplement 36.
- Equivalent in fit, form and function to OEM assembly
- 6.7 inches long x 3.5-inch-wide x 2.0-inches-deep
- Approximate Weight = 0.45 lbs.
- Aluminum material

AIRCRAFT APPLICATION

Boeing 737-600/700/700C/800/900/900ER/
MAX 8

GIMBAL - POSITIONS #1, #2, #3, #6, #7 and #8

ATA Chapter: 27-51



PRODUCT DESCRIPTION

Part of the gimbal that moves the trailing edge flap surface. The gimbal connects the ballscrew nut and moves as the ballscrew turns. Two bushings join the ballscrew nut and gimbal

ATS PART NUMBER

ADU18-8ATSMRO

OEM PART NUMBER

ADU18-8

TECHNICAL SPECIFICATIONS

- FAA PMA PQ5315NM, Supplement 49
- Equivalent in fit, form and function to OEM assembly
- 1.5" x 1.0"
- Approximate Weight = 0.24 lbs.
- CRES bar material

AIRCRAFT APPLICATION

Boeing 737-600/700/700C/800/900/900ER/
MAX8/MAX9
Boeing 757-200/200PF/200CB/300

27: FLIGHT CONTROLS

PIVOT BOLT – #1, #2, #3, #6, #7 and #8

ATA Chapter: 27-51



PRODUCT DESCRIPTION

Component of the Flap Track Fairing Module that serves as an aft attach point to hold the corresponding Flap Track Fairing in place +D27

ATS PART NUMBER

113A9308-1ATSMRO
113A9208-1ATSMRO

OEM PART NUMBER

113A9308-1
113A9208-1

TECHNICAL SPECIFICATIONS

- FAA PMA PQ5315NM, Supplement 43
 - Equivalent in fit, form and function to OEM assembly
 - Annealed Bar material
- 113A9308-1:**
- 11.22 inches long x 0.498 inches diameter.
 - Approximate Weight = 0.37 lbs.
- 113A9208-1:**
- 11.06 inches long x 0.623 inches diameter.
 - Approximate Weight = 0.56 lbs.

AIRCRAFT APPLICATION

Boeing 737-600/700/700C/800/900/900ER/
MAX 8

RETAINER

ATA Chapter: 27-51, 57-53



PRODUCT DESCRIPTION

Component of the Flap Track Fairing Module that serves as an aft attach point to hold the #1/#2/#3/#6/#7/#8 Flap Track Fairing in place

ATS PART NUMBER

69B14136-2ATSMRO

OEM PART NUMBER

69B14136-2

TECHNICAL SPECIFICATIONS

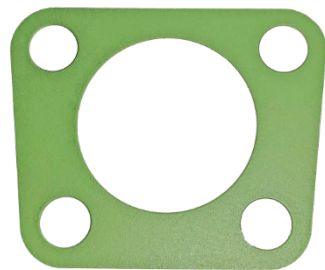
- Retainer (P/N: 69B14136-2ATSMRO) is a detail that feeds into Adjust Link Assembly (P/N: 113A9305-5ATSMRO, Supplement 24)

AIRCRAFT APPLICATION

Boeing 737-600/700/800/900/900ER/MAX 8

SHIM – LAMINATED

ATA Chapter: 27-51, 57-53



PRODUCT DESCRIPTION

Component of the Flap Track Fairing Module that serves as an aft attach point to hold the #1/#2/#3/#6/#7/#8 Flap Track Fairing in place

ATS PART NUMBER

69B14136-3ATSMRO

OEM PART NUMBER

69B14136-3

TECHNICAL SPECIFICATIONS

- Shim - Laminated (P/N: 69B14136-3ATSMRO) is a detail that feeds into Adjust Link Assembly (P/N: 113A9305-5ATSMRO, Supplement 24)

AIRCRAFT APPLICATION

Boeing 737-600/700/800/900/900ER/MAX 8

27: FLIGHT CONTROLS

HYDRAULIC FUSE HOUSING

ATA Chapter: 27-81 / 29-11 / 32-32 / 32-33 / 78-34



7-2882-5

PRODUCT DESCRIPTION

Precision machined tube that houses a piston, metering cone, metering body, piston spring, metering cylinder and other parts to satisfy operation parameters indicated for its application

Housing typically replaced during overhaul or rebuild of Flow Rate Fuse Assembly. Each fuse configuration has been designed to accommodate specific dimensional, weight and hydraulic interface requirements

ATS PART NUMBER

7-2882-4ATS
7-2882-5ATS
7-2882-6ATS

OEM PART NUMBER

7-2882-4
7-2882-5
7-2882-6

TECHNICAL SPECIFICATIONS

- FAA PMA PQ5315NM, Supplement 1
- Equivalent in fit, form and function to OEM assembly
- -4: 4.45-inch-Long x 1.75-inch diameter
- -5: 5.17-inch-Long x 1.75-inch diameter
- -6: 5.78-inch-Long x 1.75-inch diameter
- Approximate Weight = 0.41 lbs.
- Aluminum material

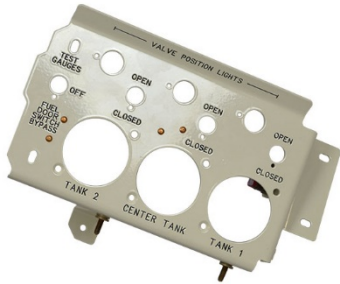
AIRCRAFT APPLICATION

Boeing 737-
300/400/500/600/700/700C/800/900/
900ER

28: FUEL

REFUELING STATION PANEL ASSEMBLY

ATA Chapter: 28-21



PRODUCT DESCRIPTION

Serves as a holding panel for Refueling Station Instruments

ATS PART NUMBER

654A0004-366ATSMRO

OEM PART NUMBER

654A0004-366

TECHNICAL SPECIFICATIONS

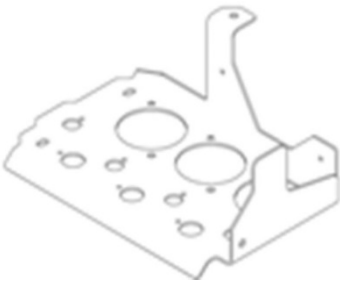
- FAA PMA PQ5315NM, Supplement 26
- Equivalent in fit, form and function to OEM assembly
- Aluminum construction with Skydrol™resistant treatment

AIRCRAFT APPLICATION

Boeing 737-600/700/700C/800/900/900ER/
MAX 8

BRACKET

ATA Chapter: 28-21



PRODUCT DESCRIPTION

Bracket 344A2003-8ATSMRO is a component of Refueling Station Panel Assembly 654A0004-366ATSMRO that serves as a holding panel for Refueling Station Instruments

ATS PART NUMBER

344A2003-8ATSMRO

OEM PART NUMBER

344A2003-8

TECHNICAL SPECIFICATIONS

- FAA PMA PQ5315NM, Supplement 26
- Equivalent in fit, form and function to OEM assembly
- Aluminum construction with Skydrol™resistant treatment

AIRCRAFT APPLICATION

Boeing 737-600/700/700C/800/900/900ER/
MAX 8

BRACKET

ATA Chapter: 28-21



PRODUCT DESCRIPTION

Bracket 344A2003-9ATSMRO is a component of Refueling Station Panel Assembly 654A0004-366ATSMRO that serves as a holding panel for Refueling Station Instruments

ATS PART NUMBER

344A2003-9ATSMRO

OEM PART NUMBER

344A2003-9

TECHNICAL SPECIFICATIONS

- FAA PMA PQ5315NM, Supplement 26
- Equivalent in fit, form and function to OEM assembly
- Aluminum construction with Skydrol™resistant treatment

AIRCRAFT APPLICATION

Boeing 737-600/700/700C/800/900/900ER/
MAX 8

28: FUEL

VORTEX GENERATOR

ATA Chapter: 28-12



PRODUCT DESCRIPTION

Reduces whining noise on approach

ATS PART NUMBER

780001-500-501

OEM PART NUMBER

N/A

TECHNICAL SPECIFICATIONS

- FAA PMA PQ5315NM, Supplement 14.
- Approval basis: STC ST02577SE
- Equivalent in fit, form and function to OEM assembly
- No impact to fuel overpressure protection ventilation system
- Installs in existing fastener holes on fuel vent panel – no drilling required
- Four generators required per plane, kit option available
- FAA and EASA approved

AIRCRAFT APPLICATION

Airbus A319, A320

VORTEX GENERATOR

ATA Chapter: 28-12



PRODUCT DESCRIPTION

Reduces whining noise on approach

ATS PART NUMBER

780001-500-503

OEM PART NUMBER

N/A

TECHNICAL SPECIFICATIONS

- FAA PMA PQ5315NM, Supplement 14
- Approval basis: STC ST02577SE
- Equivalent in fit, form and function to OEM assembly
- No impact to fuel overpressure protection ventilation system
- Installs in existing fastener holes on fuel vent panel – no drilling required
- Four generators required per plane, kit option available
- FAA and EASA approved

AIRCRAFT APPLICATION

Airbus A321

29: HYDRAULIC POWER

RESERVOIR DEPRESSURIZATION VALVE ASSEMBLY

ATA Chapter: 29-11



PRODUCT DESCRIPTION

Releases system pressure in aircraft hydraulic reservoirs for maintenance or servicing

ATS PART NUMBER

HV22-31ATS

OEM PART NUMBER

HV22-31

TECHNICAL SPECIFICATIONS

- FAA PMA PQ5315NM, Supplement 28
- Equivalent in fit, form and function to OEM assembly
- Stainless steel construction with cadmium plate protective treatment

AIRCRAFT APPLICATION

Boeing 747-400
Boeing 757-200
Boeing 767-200/300
Boeing 777-200

FILTER CAP

ATA Chapter: 29-20



PRODUCT DESCRIPTION

Retains and provides access to the reservoir pressurization module filter
Component of the main hydraulic reservoir pressurization module

ATS PART NUMBER

732-11613ATS

OEM PART NUMBER

732-11613

TECHNICAL SPECIFICATIONS

- FAA PMA PQ5315NM, Supplement 4
- Equivalent in fit, form and function to OEM part
- Aluminum material
- Anodized finish for improved corrosion protection

AIRCRAFT APPLICATION

Boeing 747-200B/200C/200F/300/400/400D/
400SP/400SR
Boeing 767-200/300
Boeing 777-200

RESERVOIR PRESSURIZATION MANIFOLD

ATA Chapter: 29-20



PRODUCT DESCRIPTION

Controls pneumatic pressurization of aircraft hydraulic reservoirs

ATS PART NUMBER

732-11242ATS

OEM PART NUMBER

732-11242

TECHNICAL SPECIFICATIONS

- FAA PMA PQ5315NM, Supplement 12
- Equivalent in fit, form and function to OEM assembly
- Superior machined aluminum construction compared to cast aluminum OEM part
- Anodized for improved corrosion resistance

AIRCRAFT APPLICATION

Boeing 737-300/400/500
Boeing 747-100/200/200B/200C/200F/SP/SR
Boeing 757-200/200CB/200PF

32: LANDING GEAR

CUP WASHER

ATA Chapter: 32-32



PRODUCT DESCRIPTION

Lock washers keep respective threaded components from backing off during service

ATS PART NUMBER

734-17378ATS

OEM PART NUMBER

734-17378

TECHNICAL SPECIFICATIONS

- FAA PMA PQ5315NM, Supplement 2
- Equivalent in fit, form and function to OEM assembly
- Tested for Proof Pressure and Ultimate Pressure against OEM data
- Stainless steel material

AIRCRAFT APPLICATION

Boeing 777-200/300

CUP WASHER

ATA Chapter: 32-32



PRODUCT DESCRIPTION

Lock washers keep respective threaded components from backing off during service

ATS PART NUMBER

734-17379ATS

OEM PART NUMBER

734-17379

TECHNICAL SPECIFICATIONS

- FAA PMA PQ5315NM, Supplement 2
- Equivalent in fit, form and function to OEM assembly
- Tested for Proof Pressure and Ultimate Pressure against OEM data
- Stainless steel material

AIRCRAFT APPLICATION

Boeing 777-200/300

CUP WASHER

ATA Chapter: 32-32



PRODUCT DESCRIPTION

Lock washers keep respective threaded components from backing off during service

ATS PART NUMBER

734-17382ATS

OEM PART NUMBER

734-17382

TECHNICAL SPECIFICATIONS

- FAA PMA PQ5315NM, Supplement 2
- Equivalent in fit, form and function to OEM assembly
- Tested for Proof Pressure and Ultimate Pressure against OEM data
- Stainless steel material

AIRCRAFT APPLICATION

Boeing 777-200/300

33: LIGHTS

MAP LIGHT LENS ASSEMBLY

ATA Chapter: 33-10



PRODUCT DESCRIPTION

Component of the Cockpit Floodlight Assembly
Installs in multiple locations per aircraft

ATS PART NUMBER

16-0095-1ATSMRO

OEM PART NUMBER

16-0095-1

TECHNICAL SPECIFICATIONS

- FAA PMA PQ5315NM, Supplement 18
- Equivalent in fit, form and function to OEM map light assembly
- Light illumination is identical to OEM part
- Lexan Lens for excellent impact resistance and high optical quality
- Brass Cup Rivet for superior corrosion resistance
- Dimensions: 1.49" x 0.43"

AIRCRAFT APPLICATION

Boeing 737-300/400/500/600/700/700C/800/
900/900ER/MAX 8
Boeing 757-200/200PF/300
Boeing 767-300/300F

CARGO GRILLE LENS ASSEMBLY

ATA Chapter: 33-36



PRODUCT DESCRIPTION

Protects cargo compartment light assemblies
from impact damage

ATS PART NUMBER

15-0712-12ATSMRO

OEM PART NUMBER

15-0712-12

TECHNICAL SPECIFICATIONS

- FAA PMA PQ5315NM, Supplement 22
- Equivalent in fit, form and function to OEM assembly

AIRCRAFT APPLICATION

Boeing 737-600/700/800/900/900ER

CARGO GRILLE LENS ASSEMBLY

ATA Chapter: 33-36



PRODUCT DESCRIPTION

Protects cargo compartment light assemblies
from impact damage

ATS PART NUMBER

15-0712-7ATSMRO

OEM PART NUMBER

15-0712-7

TECHNICAL SPECIFICATIONS

- FAA PMA PQ5315NM, Supplement 22
- Equivalent in fit, form and function to OEM assembly

AIRCRAFT APPLICATION

Boeing 737-600/700/700C/800/900

51: STANDARD PRACTICES AND STRUCTURES

FILLER – STA 796, AFT CARGO DOOR

ATA Chapter: 51-00, 53-13



PRODUCT DESCRIPTION

Function as a ramp in the upper corners of the scuff plates to the doorway to give a smooth transition for the door seal

ATS PART NUMBER

146A8344-1ATSMRO

OEM PART NUMBER

146A8344-1

TECHNICAL SPECIFICATIONS

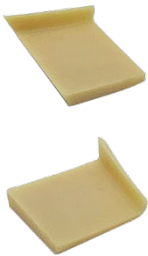
- FAA PMA PQ5315NM, Supplement 65
- Equivalent in fit, form and function to OEM part

AIRCRAFT APPLICATION

Boeing 737-600/700/700C/800/900/900ER/
MAX 8/MAX 9

FILLER – STA 846, AFT CARGO DOOR

ATA Chapter: 51-00, 53-13



PRODUCT DESCRIPTION

Function as a ramp in the upper corners of the scuff plates to the doorway to give a smooth transition for the door seal

ATS PART NUMBER

146A8344-2ATSMRO

OEM PART NUMBER

146A8344-2

TECHNICAL SPECIFICATIONS

- FAA PMA PQ5315NM, Supplement 65
- Equivalent in fit, form and function to OEM part

AIRCRAFT APPLICATION

Boeing 737-600/700/700C/800/900/900ER/
MAX 8/MAX 9

52: DOORS

COVER PLATE ASSEMBLY

ATA Chapter: 52-13, 52-41



PRODUCT DESCRIPTION

Decorative cover for entry door handle

ATS PART NUMBER

411N2069-8BATSMRO (Soft White)
411N2069-8DATSMRO (Bright White)

OEM PART NUMBER

411N2069-8()

TECHNICAL SPECIFICATIONS

- FAA PMA PQ5315NM, Supplement 19
- Equivalent in fit, form and function to OEM assembly
- Available in multiple colors to match original

AIRCRAFT APPLICATION

Boeing 737-600/700/800/900ER/MAX 8

EVERLATCH™ CARGO DOOR LATCH – AFT & FWD

ATA Chapter: 52-31



PRODUCT DESCRIPTION

The EverLatch™ Cargo Door Latch by ATS is a cost-effective solution to a long-standing cargo door latch problem where operators experience fuselage skin and cargo door housing damage from sheared off nylon bumpers. The EverLatch is easy to install and is currently in service with airlines operating Boeing 737NGs

ATS PART NUMBER

718932-100-101 (AFT)
718932-111-101 (FWD)

OEM PART NUMBER

H414-53 (AFT)
H414-29 (FWD)

TECHNICAL SPECIFICATIONS

- FAA Certified Design under STC # ST02525SE, PMA obtained
- Direct replacement for OEM part at a reduced cost

AIRCRAFT APPLICATION

Boeing 737-600/700/700C/800/900/900ER/
MAX 8

BALL CLUTCH SHAFT

ATA Chapter: 52-34



PRODUCT DESCRIPTION

Protects the Main Cargo Door Power Drive Unit when excessive torque is applied
Component of Main Cargo Door Hinge Power Drive Unit

ATS PART NUMBER

732-14281ATS

OEM PART NUMBER

732-14281

TECHNICAL SPECIFICATIONS

- FAA PMA PQ5315NM, Supplement 5
- Equivalent in fit, form and function to OEM assembly
- Carbonized to increase wear resistance
- Alloy steel material

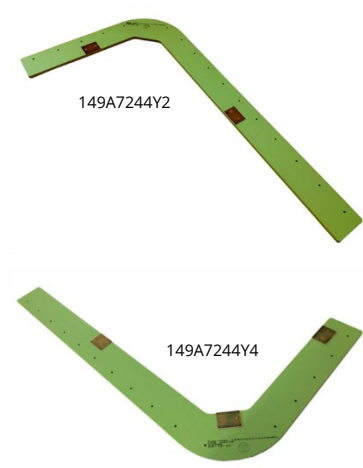
AIRCRAFT APPLICATION

Boeing 757-200/200PF/200CB/767-200/300/
300F/400ER

52: DOORS

DOUBLER ASSEMBLY

ATA Chapter: 52-48



PRODUCT DESCRIPTION

Doubler Assy provides a stiffening element for the composite Air Conditioning Access Door around the hole for the High Pressure Connect Access Door

ATS PART NUMBER

149A7244Y2ATSMRO
149A7244Y4ATSMRO

OEM PART NUMBER

149A7244-2, F8149A7244Y2
149A7244-4

TECHNICAL SPECIFICATIONS

- FAA PMA PQ5315NM, Supplement 40
- Equivalent in fit, form and function to OEM assembly

AIRCRAFT APPLICATION

Boeing 737-600/700/700C/800/900

ROD ASSEMBLY – A/C ACCESS DOOR SUPPORT

ATA Chapter: 52-48

PRODUCT DESCRIPTION

Used to manually hold the ECS Access Door in an open configuration during maintenance operations

ATS PART NUMBER

65-74573-3ATSMRO

OEM PART NUMBER

65-74573-3

TECHNICAL SPECIFICATIONS

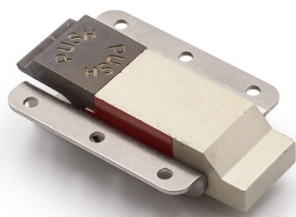
- FAA PMA PQ5315NM, Supplement 55
- Equivalent in fit, form and function to OEM assembly

AIRCRAFT APPLICATION

Boeing 737-600/700/700C/800/900/900ER/
MAX 8/MAX 9

FORWARD FAIRING ACCESS DOOR LATCH ASSEMBLY

ATA Chapter: 52-49



PRODUCT DESCRIPTION

Allow aircraft maintenance personnel to open and/or secure FWD Fairing Access Door

ATS PART NUMBER

H498-9-163-200ATS

OEM PART NUMBER

H498-9-163-200

TECHNICAL SPECIFICATIONS

- FAA PMA PQ5315NM, Supplement 13 and 17
- Equivalent in fit, form and function to OEM assembly
- Red handle paint indicates an improperly-secured latch

AIRCRAFT APPLICATION

Boeing 737-600/700/700C/800/900/900ER/
MAX 8

52: DOORS

HOLD OPEN STRUT ASSEMBLY

ATA Chapter: 52-49



PRODUCT DESCRIPTION

A strut for holding the Aft Fairing Brake Accumulator Door open during maintenance procedures

ATS PART NUMBER

149A7564-2ATSMRO

OEM PART NUMBER

149A7564-2

TECHNICAL SPECIFICATIONS

- FAA PMA PQ5315NM, Supplement 30
- Equivalent in fit, form and function to OEM assembly
- Attaches to the Aft Fairing Brake Accumulator Door
- Stows securely against the inner surface of the door for flight

AIRCRAFT APPLICATION

Boeing 737-600/700/700C/800/900/900ER/
MAX 8

53: FUSELAGE

FLIGHT DECK SEAT TRACKS

ATA Chapter: 53-10, 25-11



PRODUCT DESCRIPTION

Shorter lead time and less cost replacement parts for flight deck seat tracks as compared to OEM components

ATS PART NUMBER

1A226-0201ATSMRO / 1A226-0202ATSMRO
1A226-0203ATSMRO / 1A226-0204ATSMRO
1A226-0205ATSMRO / 1A226-0206ATSMRO
1A296-0339ATSMRO / 1A296-0340ATSMRO

OEM PART NUMBER

1A226-0201 / 1A226-0202
1A226-0203 / 1A226-0204
1A226-0205 / 1A226-0206
1A296-0339 / 1A296-0340

TECHNICAL SPECIFICATIONS

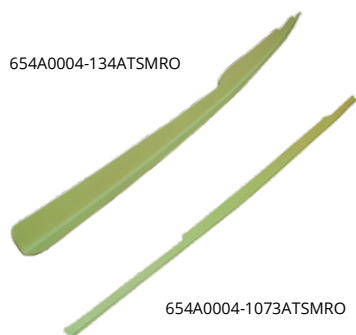
- FAA PMA PQ5315NM, Supplement 59
- Equivalent in fit, form and function to OEM

AIRCRAFT APPLICATION

Boeing 737-600/700/700C/800/900/900ER/
MAX 8/MAX 9

INNER CHORD – GALLERY DOOR MOPSILL

ATA Chapter: 53-10



PRODUCT DESCRIPTION

Components of Section 41 Door Surround Structure

ATS PART NUMBER

654A0004-134ATSMRO
654A0004-1073ATSMRO

OEM PART NUMBER

654A0004-134
654A0004-1073

TECHNICAL SPECIFICATIONS

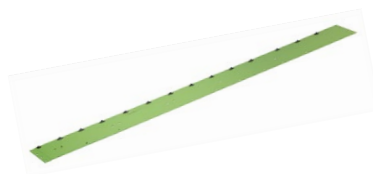
- FAA PMA PQ5315NM, Supplement 54
- Equivalent in fit, form and function to OEM part
- Current OEM ICA information is applicable to parts

AIRCRAFT APPLICATION

Boeing 737-600/700/800/900/900ER/
MAX 8/MAX 9

AFT REVEAL ASSEMBLY

ATA Chapter: 53-11



PRODUCT DESCRIPTION

Component of the Aft Cargo Door Surround Structure. Primary function is to hold a section of the lining of the cargo compartment in place

ATS PART NUMBER

146A9403-237ATSMRO

OEM PART NUMBER

146A9403-237

TECHNICAL SPECIFICATIONS

- FAA PMA PQ5315NM, Supplement 15
- Equivalent in fit, form and function to OEM assembly
- Aluminum material

AIRCRAFT APPLICATION

Boeing 737-600/700/700C/800/900/900ER/
MAX 8

53: FUSELAGE

FILLER – STA 796, AFT CARGO DOOR

ATA Chapter: 53-13, 51-00



PRODUCT DESCRIPTION

Function as a ramp in the upper corners of the scuff plates to the doorway to give a smooth transition for the door seal

ATS PART NUMBER

146A8344-1ATSMRO

OEM PART NUMBER

146A8344-1

TECHNICAL SPECIFICATIONS

- FAA PMA PQ5315NM, Supplement 65
- Equivalent in fit, form and function to OEM part

AIRCRAFT APPLICATION

Boeing 737-600/700/700C/800/900/900ER/
MAX 8/MAX 9

FILLER – STA 846, AFT CARGO DOOR

ATA Chapter: 53-13, 51-00



PRODUCT DESCRIPTION

Function as a ramp in the upper corners of the scuff plates to the doorway to give a smooth transition for the door seal

ATS PART NUMBER

146A8344-2ATSMRO

OEM PART NUMBER

146A8344-2

TECHNICAL SPECIFICATIONS

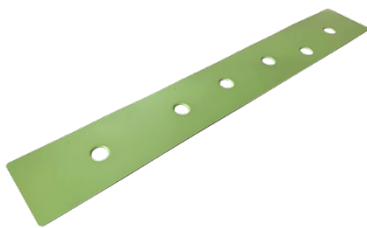
- FAA PMA PQ5315NM, Supplement 65
- Equivalent in fit, form and function to OEM part

AIRCRAFT APPLICATION

Boeing 737-600/700/700C/800/900/900ER/
MAX 8/MAX 9

WEB – FWD CARGO DOOR SILL

ATA Chapter: 53-30



PRODUCT DESCRIPTION

Component of Section 43 Door Surround Structure

ATS PART NUMBER

654A0003-58ATSMRO

OEM PART NUMBER

654A0003-58

TECHNICAL SPECIFICATIONS

- FAA PMA PQ5315NM, Supplement 55
- Equivalent in fit, form and function to OEM part
- Current OEM ICA information is applicable to parts

AIRCRAFT APPLICATION

Boeing 737-600/700/700C/800/900/900ER/
MAX 8/MAX 9

53: FUSELAGE

SHIELD ASSEMBLY

ATA Chapter: 53-30



PRODUCT DESCRIPTION

Attachment points for floor and sidewall panels of the forward cargo bay

ATS PART NUMBER

143A8126U21ATSMRO

OEM PART NUMBER

143A8126U21

TECHNICAL SPECIFICATIONS

- FAA PMA PQ5315NM, Supplement 34
- Equivalent in fit, form and function to OEM assembly
- 143A8126U21ATSMRO installs forward of the forward cargo bay door

AIRCRAFT APPLICATION

Boeing 737-700/700C/800/900/900ER/
MAX 8/MAX 9

SHIELD ASSEMBLY

ATA Chapter: 53-30



PRODUCT DESCRIPTION

Attachment points for floor and sidewall panels of the forward cargo bay

ATS PART NUMBER

143A8126U31ATSMRO

OEM PART NUMBER

143A8126U31

TECHNICAL SPECIFICATIONS

- FAA PMA PQ5315NM, Supplement 34
- Equivalent in fit, form and function to OEM assembly
- 143A8126U31ATSMRO installs aft of the forward cargo bay door

AIRCRAFT APPLICATION

Boeing 737-700/700C

SEAT TRACK – SECTIONS 43

ATA Chapter: 53-30



PRODUCT DESCRIPTION

Provides a means of attachment for passenger seats

ATS PART NUMBER

654A0004-77ATSMRO
143A5310-54ATSMRO

OEM PART NUMBER

654A0004-77
143A5310-54

TECHNICAL SPECIFICATIONS

- FAA PMA PQ5315NM, Supplement 55
- Equivalent in fit, form and function to OEM part
- Current OEM ICA information is applicable to parts

AIRCRAFT APPLICATION

Boeing 737-700

53: FUSELAGE

SEAT TRACK – SECTIONS 43

ATA Chapter: 53-30



PRODUCT DESCRIPTION

Provides a means of attachment for passenger seats

ATS PART NUMBER

654A0004-776ATSMRO
143A5310-52ATSMRO
1435310-109ATSMRO

OEM PART NUMBER

654A0004-776, 143A5310-51
143A5310-52
1435310-109

TECHNICAL SPECIFICATIONS

- FAA PMA PQ5315NM, Supplement 55
- Equivalent in fit, form and function to OEM part
- Current OEM ICA information is applicable to parts

AIRCRAFT APPLICATION

Boeing 737-700/800/900/900ER/MAX 8/MAX 9

FRAME – ECS SUPPORT

ATA Chapter: 53-40



PRODUCT DESCRIPTION

ECS Support Frame supports the RAM Air Exhaust Duct Panel just aft of the main LH and RH ECS bay doors

ATS PART NUMBER

149A7214-19ATSMRO

OEM PART NUMBER

149A7214-19

TECHNICAL SPECIFICATIONS

- FAA PMA PQ5315NM, Supplement 58
- Equivalent in fit, form and function to OEM part
- 149A7214-20ATSMRO opposite to 149A7214-19ATSMRO

AIRCRAFT APPLICATION

Boeing 737-700/700C/800/900ER

53: FUSELAGE

FRAME – ECS SUPPORT

ATA Chapter: 53-40



PRODUCT DESCRIPTION

ECS Support Frame supports the RAM Air Exhaust Duct Panel just aft of the main LH and RH ECS bay doors

ATS PART NUMBER

149A7214-20ATSMRO

OEM PART NUMBER

149A7214-20

TECHNICAL SPECIFICATIONS

- FAA PMA PQ5315NM, Supplement 58
- Equivalent in fit, form and function to OEM part
- 149A7214-20ATSMRO opposite to 149A7214-19ATSMRO

AIRCRAFT APPLICATION

Boeing 737-700/700C/800/900ER

SEAT TRACK – SECTIONS 44

ATA Chapter: 53-40



PRODUCT DESCRIPTION

Provides a means of attachment for passenger seats

ATS PART NUMBER

144A5350-1ATSMRO

144A5350-3ATSMRO

OEM PART NUMBER

144A5350-1

144A5350-3

TECHNICAL SPECIFICATIONS

- FAA PMA PQ5315NM, Supplement 47
- Equivalent in fit, form and function to OEM part
- Current OEM ICA information is applicable to parts

AIRCRAFT APPLICATION

144A5350-1ATSMRO:

Boeing 737-600/700/700C/800/900/900ER/
MAX 8/MAX 9

144A5350-3ATSMRO:

Boeing 737-600/700

53: FUSELAGE

ISOLATOR - SIDEWALL

ATA Chapter: 53-40



PRODUCT DESCRIPTION

Isolators function as an attachment point for the sidewall panels.

ATS PART NUMBER

144A9451U3ATSMRO
144A9451U4ATSMRO
144A9451U5ATSMRO

OEM PART NUMBER

144A9451-3, 144A9451Y3, 144A9451U3
144A9451-4, 144A9451Y4, 144A9451U4
144A9451-5, 144A9451Y5, 144A9451U5

TECHNICAL SPECIFICATIONS

- FAA PMA PQ5315NM, Supplement 51
- Equivalent in fit, form and function to OEM part
- Current OEM ICA information is applicable to parts

AIRCRAFT APPLICATION

Boeing 737-600/700/700C/800/900/900ER/
MAX 8/MAX 9

FLOOR PANEL BREAK ASSEMBLY

ATA Chapter: 53-42



PRODUCT DESCRIPTION

Provides support for floor panels located in the passenger cabin. PMA offering addresses operator-reported service difficulties for cracked OEM parts

ATS PART NUMBER

143A5240-35ATSMRO
143A5240-36ATSMRO

OEM PART NUMBER

143A5240-35
143A5240-36

TECHNICAL SPECIFICATIONS

- FAA PMA PQ5315NM, Supplement 38
- Equivalent in fit, form and function to OEM assembly
- Provided un-drilled to facilitate back-drilling
- Formed Aluminum Sheet
- Chemical conversion coating and corrosion-inhibiting primer applied
- 143A5240-35ATSMRO installs left
- 143A5240-36ATSMRO installs right

AIRCRAFT APPLICATION

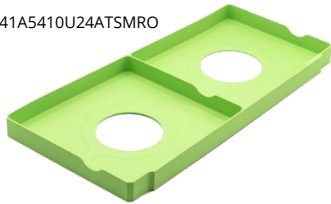
Boeing 737-600/700/800/900/900ER/
MAX 8/MAX 9

53: FUSELAGE

INTERCOSTAL – FLOOR STABILIZER

ATA Chapter: 53-42

141A5410U24ATSMRO



PRODUCT DESCRIPTION

Support the floor panels

ATS PART NUMBER

141A5410U24ATSMRO
141A5410U25ATSMRO
141A5410U146ATSMRO
141A5410U148ATSMRO
141A5410U150ATSMRO

OEM PART NUMBER

141A5410U24
141A5410U25
141A5410U146
141A5410U148
141A5410U150

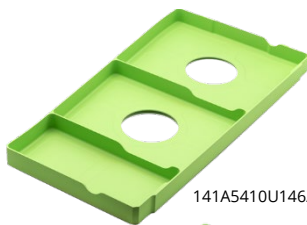
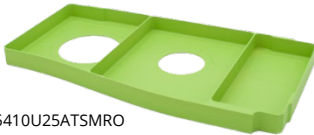
TECHNICAL SPECIFICATIONS

- FAA PMA PQ5315NM, Supplement 43
- Equivalent in fit, form and function to OEM parts
- Current OEM ICA information is applicable to parts

AIRCRAFT APPLICATION

Boeing 737-600/700/800/900/900ER/
MAX 8/MAX 9

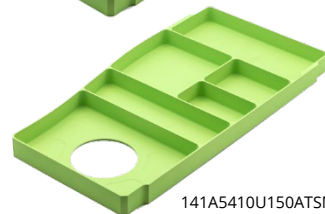
141A5410U25ATSMRO



141A5410U146ATSMRO



141A5410U148ATSMRO



141A5410U150ATSMRO

INTERCOSTAL – FLOOR STABILIZER

ATA Chapter: 53-42



141A5410U140ATSMRO

PRODUCT DESCRIPTION

Support the floor panels

ATS PART NUMBER

141A5410U140ATSMRO
141A5410U149ATSMRO

OEM PART NUMBER

141A5410-12, 141A5410-140, 141A5410Y140,
141A5410U140
141A5410-17, 141A5410-149, 141A5410Y149,
141A5410U149

TECHNICAL SPECIFICATIONS

- FAA PMA PQ5315NM, Supplement 52
- Equivalent in fit, form and function to OEM parts
- Current OEM ICA information is applicable to parts

AIRCRAFT APPLICATION

141A5410U140ATSMRO:

Boeing 737-600/700/700C/800/900/900ER/
MAX 8/MAX 9

141A5410U149ATSMRO:

Boeing 737-600/700/800/900/900ER/
MAX 8/MAX 9



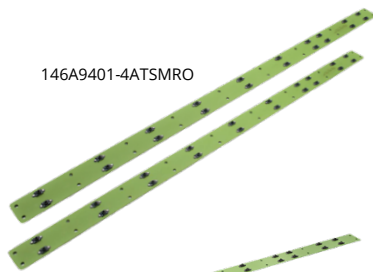
141A5410U149ATSMRO

53: FUSELAGE

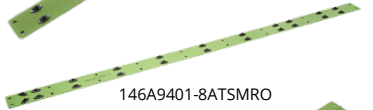
TEE ASSEMBLY

ATA Chapter: 53-42

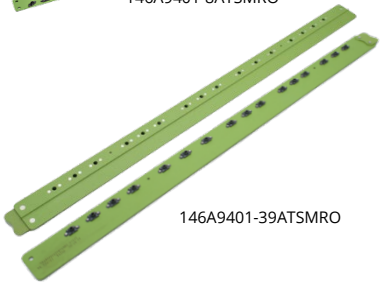
146A9401-4ATSMRO



146A9401-8ATSMRO



146A9401-39ATSMRO



PRODUCT DESCRIPTION

Provides a connection point and support for the aft cargo floor

ATS PART NUMBER

146A9401-4ATSMRO
146A9401-8ATSMRO
146A9401U39ATSMRO

OEM PART NUMBER

146A9401-4
146A9401-8
146A9401-39, 146A9401Y39, 146A9401U39

TECHNICAL SPECIFICATIONS

- FAA PMA PQ5315NM, Supplement 45
- Equivalent in fit, form and function to OEM assembly
- Current OEM ICA information is applicable to parts

AIRCRAFT APPLICATION

Boeing 737-600/700/700C/800/900/900ER/
MAX 8/MAX 9

TIE DOWN ASSEMBLY – LH FWD ENTRY DOOR

ATA Chapter: 53-42, 25-66



141A5220-2ATSMRO, STA 312



141A5220-4ATSMRO, STA 344

PRODUCT DESCRIPTION

Attached to the floor structure located at the LH Fwd Entry Door to secure the Escape Slide during emergency evacuation

ATS PART NUMBER

141A5220-2ATSMRO
141A5220-4ATSMRO

OEM PART NUMBER

141A5220-2
141A5220-4

TECHNICAL SPECIFICATIONS

- FAA PMA PQ5315NM, Supplement 53
- Equivalent in fit, form and function to OEM part
- Current OEM ICA information is applicable to parts

AIRCRAFT APPLICATION

141A5220-2ATSMRO:

Boeing 737-600/700/700C/800/900/900ER/
MAX 8/MAX 9

141A5220-4ATSMRO:

Boeing 737-600/700/800/900/900ER/
MAX 8/MAX 9

53: FUSELAGE

AFT CARGO PIT SHIELD

ATA Chapter: 53-60



PRODUCT DESCRIPTION

Provides attach points for aft cargo bay sidewall and floor panels

ATS PART NUMBER

146A8127U1ATSMRO

OEM PART NUMBER

146A8127U1

TECHNICAL SPECIFICATIONS

- FAA PMA PQ5315NM, Supplement 21
- Equivalent in fit, form and function to OEM assembly
- Two coats of primer for improved corrosion resistance
- 146A8127U1ATSMRO installs forward of the aft cargo bay door

AIRCRAFT APPLICATION

Boeing 737-600/700/700C/800/900

AFT CARGO PIT SHIELD

ATA Chapter: 53-60



PRODUCT DESCRIPTION

Provides attach points for sidewall and floor panels in the aft cargo compartment

ATS PART NUMBER

146A8127Y10ATSMRO

OEM PART NUMBER

146A8127Y10

TECHNICAL SPECIFICATIONS

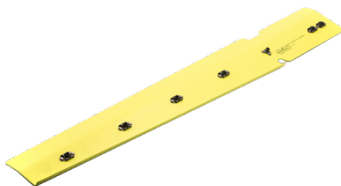
- FAA PMA PQ5315NM, Supplement 21
- Equivalent in fit, form and function to OEM assembly
- Two coats of primer for improved corrosion resistance
- 146A8127Y10ATSMRO installs aft of the aft cargo bay door

AIRCRAFT APPLICATION

Boeing 737-600/700/800/900/900ER

AFT CARGO PIT SHIELD

ATA Chapter: 53-60



PRODUCT DESCRIPTION

Provides attach points for sidewall and floor panels in the aft cargo compartment

ATS PART NUMBER

146A8127U12ATSMRO

OEM PART NUMBER

146A8127U12

TECHNICAL SPECIFICATIONS

- FAA PMA PQ5315NM, Supplement 21
- Equivalent in fit, form and function to OEM assembly
- Two coats of primer for improved corrosion resistance
- 146A8127U12ATSMRO installs forward of the aft cargo bay door

AIRCRAFT APPLICATION

Boeing 737-600/700/800/900/900ER

53: FUSELAGE

BRACKET ASSEMBLY – AFT CARGO COMPARTMENT

ATA Chapter: 53-70, 25-52



PRODUCT DESCRIPTION

Attachment point for Aft Cargo Compartment Bulkhead removable panel

ATS PART NUMBER

149A8118U29ATSMRO

OEM PART NUMBER

149A8118U29

TECHNICAL SPECIFICATIONS

- FAA PMA PQ5315NM, Supplement 52
- Equivalent in fit, form and function to OEM part
- Current OEM ICA information is applicable to parts

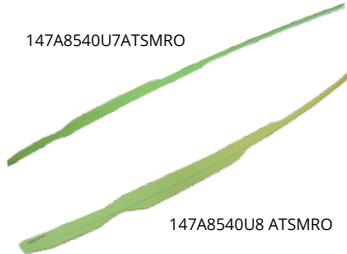
AIRCRAFT APPLICATION

Boeing 737-600/700/700C/800/900/900ER/MAX 8/MAX 9

INNER CHORD LH/RH OF AFT DOORS

ATA Chapter: 53-70

147A8540U7ATSMRO



147A8540U8 ATSMRO

PRODUCT DESCRIPTION

Formed stiffeners installed at threshold of Section 47 aft doors and are part of the door surround structure

ATS PART NUMBER

147A8540U7ATSMRO

147A8540U8ATSMRO

OEM PART NUMBER

147A8540U7

147A8540U8

TECHNICAL SPECIFICATIONS

- FAA PMA PQ5315NM, Supplement 23
- Equivalent in fit, form and function to OEM assembly
- Current OEM ICA information is applicable to parts
- Provided as undrilled parts for match-drilling on the aircraft

AIRCRAFT APPLICATION

Boeing 737-600/700/800/900/MAX 8

CLOSURE ANGLE – SECTION 48

ATA Chapter: 53-80



PRODUCT DESCRIPTION

Closure Angles function as closeouts between the vertical stabilizer and fuselage skin

ATS PART NUMBER

148A8310U3ATSMRO

148A8310U4ATSMRO

OEM PART NUMBER

148A8310-3

148A8310-4

TECHNICAL SPECIFICATIONS

- FAA PMA PQ5315NM, Supplement 55
- Equivalent in fit, form and function to OEM part
- Current OEM ICA information is applicable to parts

AIRCRAFT APPLICATION

Boeing 737-600/700/700C/800/900

53: FUSELAGE

CLOSURE ANGLE – SECTION 48

ATA Chapter: 53-80

PRODUCT DESCRIPTION

Provides a closeout interface between the fuselage crown skin and vertical stabilizer

ATS PART NUMBER

148A8310U7ATSMRO
148A8310U8ATSMRO

OEM PART NUMBER

148A8310-7, 148A8310U7
148A8310-8, 148A8310U8

TECHNICAL SPECIFICATIONS

- FAA PMA PQ5315NM, Supplement 61
- Equivalent in fit, form and function to OEM part
- 148A8310U8ATSMRO opposite to 148A8310U7ATSMRO

AIRCRAFT APPLICATION

Boeing 737-700/800

54: NACELLES/PYLONS

LATERAL RESTRAINT

ATA Chapter: 54-52



313A2312-3ATSMRO



313A2312-4ATSMRO

PRODUCT DESCRIPTION

Located on both the left and right engine's aft fairing. Prevents in-flight, lateral movement of the engine strut's aft fairing structure

ATS PART NUMBER

313A2312-3ATSMRO
313A2312-4ATSMRO

OEM PART NUMBER

313A2312-3
313A2312-4

TECHNICAL SPECIFICATIONS

- FAA PMA PQ5315NM, Supplement 35
- Equivalent in fit, form and function to OEM part
- 313A2312-4ATSMRO opposite to 313A2312-3ATSMRO

AIRCRAFT APPLICATION

Boeing 737-600/700/700C/800/900/900ER

57: WINGS

STIFFENER

ATA Chapter: 57-10



PRODUCT DESCRIPTION

Acts as additional support to the LBL 24.92 vertical stiffener of the Wing Center Section Rear Spar Installation

ATS PART NUMBER

111A1308U15ATSMRO

OEM PART NUMBER

111A1308-15

TECHNICAL SPECIFICATIONS

- FAA PMA PQ5315NM, Supplement 21
- Equivalent in fit, form and function to OEM assembly
- Undrilled part to facilitate back drilling

AIRCRAFT APPLICATION

Boeing 737-600/700/700IGW/800/900/900ER

CLOSEOUT SKIN ASSEMBLY

ATA Chapter: 57-41



116A4411U1ATSMRO



116A4411U2ATSMRO

PRODUCT DESCRIPTION

The purpose of the Closeout Skin Assembly is to "closeout" or extend the profile of the Leading Edge under the engine pylon so that no gap between the wing and the pylon fairing exists

ATS PART NUMBER

116A4411U1ATSMRO

116A4411U2ATSMRO

OEM PART NUMBER

116A4411U1

116A4411U2

TECHNICAL SPECIFICATIONS

- FAA PMA PQ5315NM, Supplement 23
- Equivalent in fit, form and function to OEM part
- Provided as undrilled part for match drilling during installation
- 116A4411U1ATSMRO opposite to 116A4411U2ATSMRO

AIRCRAFT APPLICATION

Boeing 737-600/700/700C/800/900/900ER

SUPPORT BRACKET ASSEMBLY - LWR INBD FIXED TE

ATA Chapter: 57-50



PRODUCT DESCRIPTION

Support Bracket Assembly acts as an attachment for the tie rod that connects the lower fixed trailing edge access panel to the upper fixed trailing edge panel

ATS PART NUMBER

115A2750Y1ATSMRO

OEM PART NUMBER

115A2750-1, 115A2750Y1

TECHNICAL SPECIFICATIONS

- FAA PMA PQ5315NM, Supplement 60
- Equivalent in fit, form and function to OEM assembly

AIRCRAFT APPLICATION

Boeing 737-600/700/700C/800/900/900ER/
MAX8/MAX9

57: WINGS

WIGGLE PLATE ASSEMBLY

ATA Chapter: 57-50



115A2781-13ATSMRO



115A2781-14ATSMRO

PRODUCT DESCRIPTION

Provides attach points for an Inboard Fixed Trailing Edge Lower Wing Access Panel and allows the wing to flex without tearing out the fasteners on the access panel or the rear spar

ATS PART NUMBER

115A2781-13ATSMRO
115A2781-14ATSMRO

OEM PART NUMBER

115A2781-13
115A2781-14

TECHNICAL SPECIFICATIONS

- FAA PMA PQ5315NM, Supplement 33.
- Equivalent in fit, form and function to OEM assembly.
- 115A2781-13ATSMRO opposite part to 115A2781-14ATSMRO

AIRCRAFT APPLICATION

Boeing 737-600/700/800/900ER

WIGGLE PLATE ASSEMBLY

ATA Chapter: 57-50



115A2781-3ATSMRO



115A2781-4ATSMRO

PRODUCT DESCRIPTION

Provides attach points for an Inboard Fixed Trailing Edge Lower Wing Access Panel and allows the wing to flex without tearing out the fasteners on the access panel or the rear spar

ATS PART NUMBER

115A2781-3ATSMRO
115A2781-4ATSMRO

OEM PART NUMBER

115A2781-3
115A2781-4

TECHNICAL SPECIFICATIONS

- FAA PMA PQ5315NM, Supplement 37.
- Equivalent in fit, form and function to OEM assembly.
- 115A2781-3ATSMRO opposite part to 115A2781-4ATSMRO

AIRCRAFT APPLICATION

Boeing 737-600/700/800/900ER

ADJUST LINK

ATA Chapter: 57-53, 27-51



PRODUCT DESCRIPTION

Component of the Flap Track Fairing Module that serves as an aft attach point to hold the #3 and #6 Flap Track Fairing in place

ATS PART NUMBER

113A9305-7ATSMRO

OEM PART NUMBER

113A9305-7

TECHNICAL SPECIFICATIONS

- Adjust Link (P/N: 113A9305-7ATSMRO) is a detail that feeds into Adjust Link Assembly (P/N: 113A9305-5ATSMRO, Supplement 24)

AIRCRAFT APPLICATION

Boeing 737-600/700/800/900/900ER/MAX 8

57: WINGS

ADJUST LINK ASSEMBLY

ATA Chapter: 57-53, 27-51



PRODUCT DESCRIPTION

Component of the Flap Track Fairing Module that serves as an aft attach point to hold the #3 and #6 Flap Track Fairing in place

ATS PART NUMBER

113A9305-5ATSMRO

OEM PART NUMBER

113A9305-5

TECHNICAL SPECIFICATIONS

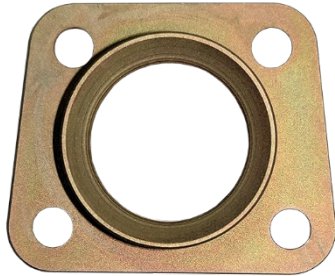
- FAA PMA PQ5315NM, Supplement 24.
- Equivalent in fit, form and function to OEM assembly.
- 15.3 inches long x 6.8 inches wide x 1.9 inches deep.
- Approximate Weight = 1.65 lbs

AIRCRAFT APPLICATION

Boeing 737-600/700/800/900/900ER/MAX 8

BUSHING - ADJUST LINK

ATA Chapter: 57-53, 27-51



PRODUCT DESCRIPTION

Component of the Flap Track Fairing Module that serves as an aft attach point to hold the #1/#2/#3/#6/#7/#8 Flap Track Fairing in place

ATS PART NUMBER

113A9120-1ATSMRO

OEM PART NUMBER

113A9120-1

TECHNICAL SPECIFICATIONS

- Bushing - Adjust Link (P/N: 113A9120-1ATSMRO) is a detail that feeds into Adjust Link Assembly (P/N: 113A9305-5ATSMRO, Supplement 24)

AIRCRAFT APPLICATION

Boeing 737-600/700/800/900/900ER/MAX 8

RETAINER

ATA Chapter: 57-53, 27-51



PRODUCT DESCRIPTION

Component of the Flap Track Fairing Module that serves as an aft attach point to hold the #1/#2/#3/#6/#7/#8 Flap Track Fairing in place

ATS PART NUMBER

69B14136-2ATSMRO

OEM PART NUMBER

69B14136-2

TECHNICAL SPECIFICATIONS

- Retainer (P/N: 69B14136-2ATSMRO) is a detail that feeds into Adjust Link Assembly (P/N: 113A9305-5ATSMRO, Supplement 24)

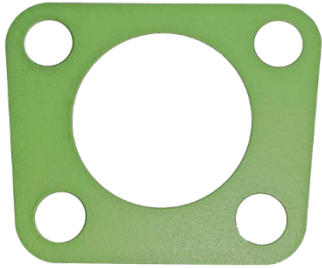
AIRCRAFT APPLICATION

Boeing 737-600/700/800/900/900ER/MAX 8

57: WINGS

SHIM - LAMINATED

ATA Chapter: 57-53, 27-51



PRODUCT DESCRIPTION

Component of the Flap Track Fairing Module that serves as an aft attach point to hold the #1/#2/#3/#6/#7/#8 Flap Track Fairing in place

ATS PART NUMBER

69B14136-3ATSMRO

OEM PART NUMBER

69B14136-3

TECHNICAL SPECIFICATIONS

- Shim - Laminated (P/N: 69B14136-3ATSMRO) is a detail that feeds into Adjust Link Assembly (P/N: 113A9305-5ATSMRO, Supplement 24)

AIRCRAFT APPLICATION

Boeing 737-600/700/800/900/900ER/MAX 8

© 2021 Aviation Technical Services – 10/2021



Trusted Partners
Supporting Flight

For more information contact:

Ben.Tschirhart@ATSmro.com

+1 425 319 7893

ATSmro.com

71: POWER PLANT

COWLING STRIKE PLATE

ATA Chapter: 71-10



PRODUCT DESCRIPTION

Strike Plate is a bent CRES sheet that provides a restraint point and wear surface for the Integrated Drive Generator. Door latches when in the closed position

ATS PART NUMBER

314-2223-1ATSMRO

OEM PART NUMBER

314-2223-1

TECHNICAL SPECIFICATIONS

- FAA PMA PQ5315NM, Supplement 48
- Equivalent in fit, form and function to OEM part

AIRCRAFT APPLICATION

Boeing 737-600/700/700C/800/900/900ER

DOUBLER – LEFT HAND FAN COWL

ATA Chapter: 71-10



PRODUCT DESCRIPTION

Formed section made from aluminum sheet metal that is attached to the Engine Fan Cowl. Provides reinforcement and acts as a stiffening element of the Fan Cowl skin adjacent to the Pressure Relief Door cutout

ATS PART NUMBER

314-2218-6ATSMRO

OEM PART NUMBER

314-2218-6

TECHNICAL SPECIFICATIONS

- FAA PMA PQ5315NM, Supplement 58
- Equivalent in fit, form and function to OEM part

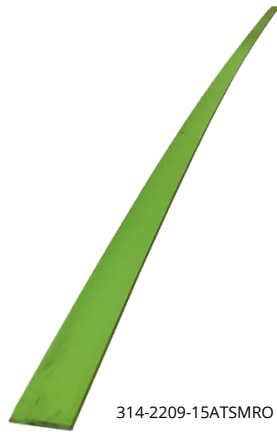
AIRCRAFT APPLICATION

Boeing 737-600/700/700C/800/900/900ER

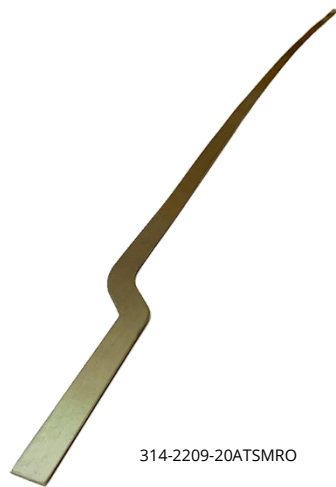
71: POWER PLANT

RUBSTRIP

ATA Chapter: 71-10



314-2209-15ATSMRO



314-2209-20ATSMRO

PRODUCT DESCRIPTION

Rubstrips are thin, flat, metallic sheet strips that line the edges of the Fan Cowl Assemblies' skins to protect them from frictional wear

ATS PART NUMBER

314-2209-13ATSMRO
314-2209-14ATSMRO
314-2209-15ATSMRO
314-2209-16ATSMRO
314-2209-17ATSMRO
314-2209-18ATSMRO
314-2209-19ATSMRO
314-2209-20ATSMRO
314-2209-21ATSMRO
314-2209-22ATSMRO
314-2209-23ATSMRO
314-2209-24ATSMRO

OEM PART NUMBER

314-2209-13
314-2209-14
314-2209-15
314-2209-16
314-2209-17
314-2209-18
314-2209-19
314-2209-20
314-2209-21
314-2209-22
314-2209-23
314-2209-24

TECHNICAL SPECIFICATIONS

- FAA PMA PQ5315NM, Supplement 56
- Equivalent in fit, form and function to OEM part

AIRCRAFT APPLICATION

Boeing 737-600/700/700C/800/900/900ER

71: POWER PLANT

TEE FRAME – UPPER and LOWER

ATA Chapter: 71-10



PRODUCT DESCRIPTION

Act as a supportive shelf for the engine cowlings to rest against when the cowlings are in the close and latched position

ATS PART NUMBER

314-2162-3ATSMRO (Upper)
314-2162-4ATSMRO (Lower)

OEM PART NUMBER

314-2162-3
314-2162-4

TECHNICAL SPECIFICATIONS

- FAA PMA PQ5315NM, Supplement 25
- Equivalent in fit, form and function to OEM part

AIRCRAFT APPLICATION

Boeing 737-600/700/700C/800/900/900ER

FIRE BARRIER

ATA Chapter: 71-11



PRODUCT DESCRIPTION

Fire barriers are part of the fire containment system and prevent a fire in the engine fan compartment from spreading beyond the firewall

ATS PART NUMBER

314-2146-3ATSMRO (Left hand)
314-2146-4ATSMRO (Right hand)

OEM PART NUMBER

314-2146-3
314-2146-4

TECHNICAL SPECIFICATIONS

- FAA PMA PQ5315NM, Supplement 44
- Equivalent in fit, form and function to OEM part

AIRCRAFT APPLICATION

Boeing 737-600/700/700C/800/900/900ER