

# 52: DOORS

## COVER PLATE ASSEMBLY

ATA Chapter: 52-13, 52-41



### PRODUCT DESCRIPTION

Decorative cover for entry door handle

### ATS PART NUMBER

411N2069-8BATSMRO (Soft White)  
411N2069-8DATSMRO (Bright White)

### OEM PART NUMBER

411N2069-8()

### TECHNICAL SPECIFICATIONS

- FAA PMA PQ5315NM, Supplement 19
- Equivalent in fit, form and function to OEM assembly
- Available in multiple colors to match original

### AIRCRAFT APPLICATION

Boeing 737-600/700/800/900ER/MAX 8

## EVERLATCH™ CARGO DOOR LATCH – AFT & FWD

ATA Chapter: 52-31



### PRODUCT DESCRIPTION

The EverLatch™ Cargo Door Latch by ATS is a cost-effective solution to a long-standing cargo door latch problem where operators experience fuselage skin and cargo door housing damage from sheared off nylon bumpers. The EverLatch is easy to install and is currently in service with airlines operating Boeing 737NGs

### ATS PART NUMBER

718932-100-101 (AFT)  
718932-111-101 (FWD)

### OEM PART NUMBER

H414-53 (AFT)  
H414-29 (FWD)

### TECHNICAL SPECIFICATIONS

- FAA Certified Design under STC # ST02525SE, PMA obtained
- Direct replacement for OEM part at a reduced cost

### AIRCRAFT APPLICATION

Boeing 737-600/700/700C/800/900/900ER/  
MAX 8

## BALL CLUTCH SHAFT

ATA Chapter: 52-34



### PRODUCT DESCRIPTION

Protects the Main Cargo Door Power Drive Unit when excessive torque is applied

Component of Main Cargo Door Hinge Power Drive Unit

### ATS PART NUMBER

732-14281ATS

### OEM PART NUMBER

732-14281

### TECHNICAL SPECIFICATIONS

- FAA PMA PQ5315NM, Supplement 5
- Equivalent in fit, form and function to OEM assembly
- Carbonized to increase wear resistance
- Alloy steel material

### AIRCRAFT APPLICATION

Boeing 757-200/200PF/200CB/767-200/300/  
300F/400ER

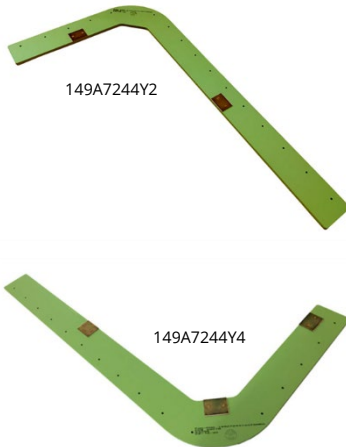


Trusted Partners  
Supporting Flight

# 52: DOORS

## DOUBLER ASSEMBLY

ATA Chapter: 52-48



### PRODUCT DESCRIPTION

Doubler Assy provides a stiffening element for the composite Air Conditioning Access Door around the hole for the High Pressure Connect Access Door

### ATS PART NUMBER

149A7244Y2ATSMRO  
149A7244Y4ATSMRO

### OEM PART NUMBER

149A7244-2, F8149A7244Y2  
149A7244-4

### TECHNICAL SPECIFICATIONS

- FAA PMA PQ5315NM, Supplement 40
- Equivalent in fit, form and function to OEM assembly

### AIRCRAFT APPLICATION

Boeing 737-600/700/700C/800/900

## ROD ASSEMBLY - A/C ACCESS DOOR SUPPORT

ATA Chapter: 52-48

### PRODUCT DESCRIPTION

Used to manually hold the ECS Access Door in an open configuration during maintenance operations

### ATS PART NUMBER

65-74573-3ATSMRO

### OEM PART NUMBER

65-74573-3

### TECHNICAL SPECIFICATIONS

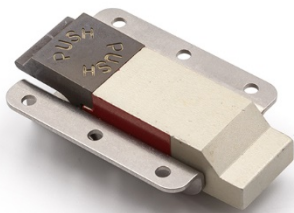
- FAA PMA PQ5315NM, Supplement 55
- Equivalent in fit, form and function to OEM assembly

### AIRCRAFT APPLICATION

Boeing 737-600/700/700C/800/900/900ER/  
MAX 8/MAX 9

## FORWARD FAIRING ACCESS DOOR LATCH ASSEMBLY

ATA Chapter: 52-49



### PRODUCT DESCRIPTION

Allow aircraft maintenance personnel to open and/or secure FWD Fairing Access Door

### ATS PART NUMBER

H498-9-163-200ATS

### OEM PART NUMBER

H498-9-163-200

### TECHNICAL SPECIFICATIONS

- FAA PMA PQ5315NM, Supplement 13 and 17
- Equivalent in fit, form and function to OEM assembly
- Red handle paint indicates an improperly-secured latch

### AIRCRAFT APPLICATION

Boeing 737-600/700/700C/800/900/900ER/  
MAX 8

# 52: DOORS

## HOLD OPEN STRUT ASSEMBLY

ATA Chapter: 52-49



### PRODUCT DESCRIPTION

A strut for holding the Aft Fairing Brake Accumulator Door open during maintenance procedures

### ATS PART NUMBER

149A7564-2ATSMRO

### OEM PART NUMBER

149A7564-2

### TECHNICAL SPECIFICATIONS

- FAA PMA PQ5315NM, Supplement 30
- Equivalent in fit, form and function to OEM assembly
- Attaches to the Aft Fairing Brake Accumulator Door
- Stows securely against the inner surface of the door for flight

### AIRCRAFT APPLICATION

Boeing 737-600/700/700C/800/900/900ER/  
MAX 8

© 2021 Aviation Technical Services – 10/2021



Trusted Partners  
Supporting Flight

For more information contact:

[Ben.Tschirhart@ATSmro.com](mailto:Ben.Tschirhart@ATSmro.com)

+1 425 319 7893

[ATSmro.com](http://ATSmro.com)