

# 27: FLIGHT CONTROLS

## HYDRAULIC FUSE HOUSING

ATA Chapter: 27-32



### PRODUCT DESCRIPTION

Component housing can be installed on separate Flow Rate Fuse assemblies. Contains parts that make a hydraulic fuse housing.

### ATS PART NUMBER

7-1462-1ATSMRO

### OEM PART NUMBER

7-1462-1

### TECHNICAL SPECIFICATIONS

- FAA PMA PQ5315NM, Supplement 3.
- Equivalent in fit, form and function to OEM assembly
- 2-7680 and 2-7681
- 3.76 inches long x 0.93 inches diameter
- Approximate Weight = 0.21 lbs.
- Material: 15-5PH H925 Stainless Steel per AMS5659

### AIRCRAFT APPLICATION

Boeing 737-300/400/500/600/700/700C/800/900/900ER  
Boeing 757-200/200PF/300  
Boeing 767-200/300/300F/400ER  
Boeing 777-200/200LR/300/300ER/F Series

## ADJUST LINK

ATA Chapter: 27-51, 57-53



### PRODUCT DESCRIPTION

Component of the Flap Track Fairing Module that serves as an aft attach point to hold the #3 and #6 Flap Track Fairing in place

### ATS PART NUMBER

113A9305-7ATSMRO

### OEM PART NUMBER

113A9305-7

### TECHNICAL SPECIFICATIONS

- Adjust Link (P/N: 113A9305-7ATSMRO) is a detail that feeds into Adjust Link Assembly (P/N: 113A9305-5ATSMRO, Supplement 24)

### AIRCRAFT APPLICATION

Boeing 737-600/700/800/900/900ER/MAX 8

## ADJUST LINK ASSEMBLY

ATA Chapter: 27-51, 57-53



### PRODUCT DESCRIPTION

Component of the Flap Track Fairing Module that serves as an aft attach point to hold the #3 and #6 Flap Track Fairing in place

### ATS PART NUMBER

113A9305-5ATSMRO

### OEM PART NUMBER

113A9305-5

### TECHNICAL SPECIFICATIONS

- FAA PMA PQ5315NM, Supplement 24.
- Equivalent in fit, form and function to OEM assembly.
- 15.3 inches long x 6.8 inches wide x 1.9 inches deep.
- Approximate Weight = 1.65 lbs

### AIRCRAFT APPLICATION

Boeing 737-600/700/800/900/900ER/MAX 8



Trusted Partners  
Supporting Flight

# 27: FLIGHT CONTROLS

## ADJUST LINK ASSEMBLY – POSITIONS #1, #2, #7 and #8

ATA Chapter: 27-51



113A9105-5

### PRODUCT DESCRIPTION

Component of the Flap Track Fairing Module that serves as an aft attach point to hold the corresponding Flap Track Fairing in place  
P/N: 113A9105-5ATSMRO holds #1 and #8  
P/N: 113A9205-5ATSMRO holds #2 and #7

### ATS PART NUMBER

113A9105-5ATSMRO  
113A9205-5ATSMRO

### OEM PART NUMBER

113A9105-5  
113A9205-5



113A9205-5

### TECHNICAL SPECIFICATIONS

- FAA PMA PQ5315NM, Supplement 42.
- Equivalent in fit, form and function to OEM assembly.
- Material: 7050-T7451 Aluminum Plate per AMS 4050

#### 113A9105-5:

- 13.45 inches long x 6.77 inches wide x 1.90 inches deep.
- Approximate Weight = 1.45 lbs.

#### 113A9205-5:

- 13.74 inches long x 7.16 inches wide x 1.90 inches deep.
- Approximate Weight = 1.50 lbs.

### AIRCRAFT APPLICATION

Boeing 737-600/700/800/900/900ER/MAX 8

## ADJUST LINK – POSITIONS #1, #2, #7 and #8

ATA Chapter: 27-51



113A9105-7

### PRODUCT DESCRIPTION

Component of the Flap Track Fairing Module that serves as an aft attach point to hold the corresponding Flap Track Fairing in place  
P/N: 113A9105-7ATSMRO holds #1 and #8  
P/N: 113A9205-7ATSMRO holds #2 and #7

### ATS PART NUMBER

113A9105-7ATSMRO  
113A9205-7ATSMRO

### OEM PART NUMBER

113A9105-7  
113A9205-7



### TECHNICAL SPECIFICATIONS

- FAA PMA PQ5315NM, Supplement 42.
- Equivalent in fit, form and function to OEM assembly.
- Material: 7050-T7451 Aluminum Plate per AMS 4050

#### 113A9105-7:

- 13.45 inches long x 6.77 inches wide x 1.90 inches deep.
- Approximate Weight = 1.45 lbs.

#### 113A9205-7:

- 13.74 inches long x 7.16 inches wide x 1.90 inches deep.
- Approximate Weight = 1.50 lbs.

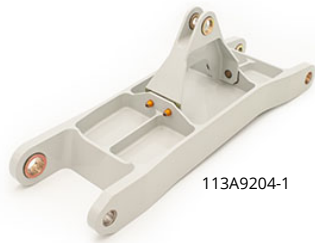
### AIRCRAFT APPLICATION

Boeing 737-600/700/800/900/900ER/MAX 8

# 27: FLIGHT CONTROLS

## ATTACH BEAM ASSEMBLY – POSITIONS #2 and #7

ATA Chapter: 27-51



113A9204-1



113A9204-2

### PRODUCT DESCRIPTION

Component of the Flap Track Fairing Module that serves as an aft attach point to hold the corresponding Flap Track Fairing in place

P/N: 113A9204-1ATSMRO holds #2

P/N: 113A9204-2ATSMRO holds #7

### ATS PART NUMBER

113A9204-1ATSMRO

113A9204-2ATSMRO

### OEM PART NUMBER

113A9204-1

113A9204-2

### TECHNICAL SPECIFICATIONS

- FAA PMA PQ5315NM, Supplement 41
- Equivalent in fit, form and function to OEM assembly
- 15.94-inches-long x 5.17-inches-wide x 6.01-inches-deep
- Approximate Weight = 3.40 lbs.
- Material: 7050-T7451 Aluminum Plate per AMS 4050

### AIRCRAFT APPLICATION

Boeing 737-600/700/700C/800/900/900ER/  
MAX 8

## ATTACH BEAM ASSEMBLY – POSITIONS #1 and #8

ATA Chapter: 27-51



113A9104-1



113A9104-2

### PRODUCT DESCRIPTION

Component of the Flap Track Fairing Module that serves as an aft attach point to hold the corresponding Flap Track Fairing in place

P/N: 113A9104-1ATSMRO holds #1

P/N: 113A9104-2ATSMRO holds #8

### ATS PART NUMBER

113A9104-1ATSMRO

113A9104-2ATSMRO

### OEM PART NUMBER

113A9104-1

113A9104-2

### TECHNICAL SPECIFICATIONS

- FAA PMA PQ5315NM, Supplement 41
- Equivalent in fit, form and function to OEM assembly
- 13.34-inches-long x 5.14-inches-wide x 2.76-inches-deep
- Approximate Weight = 2.48 lbs.
- Material: 7050-T7451 Aluminum Plate per AMS 4050

### AIRCRAFT APPLICATION

Boeing 737-600/700/700C/800/900/900ER/  
MAX 8

# 27: FLIGHT CONTROLS

## ATTACH BEAM ASSEMBLY – POSITIONS #3 and #6

ATA Chapter: 27-51



### PRODUCT DESCRIPTION

Component of the Flap Track Fairing Module that serves as an aft attach point to hold the #3 and #6 Flap Track Fairings in place

### ATS PART NUMBER

113A9304-1ATSMRO

### OEM PART NUMBER

113A9304-1

### TECHNICAL SPECIFICATIONS

- FAA PMA PQ5315NM, Supplement 23
- Equivalent in fit, form and function to OEM assembly
- 11.31-inches-long x 5.07-inches-wide x 1.64- inches-deep
- Approximate Weight = 2.04 lbs.
- Material: 7050-T7451 Aluminum Plate per AMS 4050

### AIRCRAFT APPLICATION

Boeing 737-600/700/700C/800/900/900ER/  
MAX 8

## ATTACH BEAM – POSITIONS #1 and #8

ATA Chapter: 27-51



113A9104-3

### PRODUCT DESCRIPTION

Component of the Flap Track Fairing Module that serves as an aft attach point to hold the corresponding Flap Track Fairing in place

P/N: 113A9104-3ATSMRO holds #1

P/N: 113A9104-4ATSMRO holds #8

### ATS PART NUMBER

113A9104-3ATSMRO

113A9104-4ATSMRO

### OEM PART NUMBER

113A9104-3

113A9104-4

### TECHNICAL SPECIFICATIONS

- FAA PMA PQ5315NM, Supplement 41
- Equivalent in fit, form and function to OEM assembly
- 13.34-inches-long x 5.14-inches-wide x 2.76-inches-deep
- Approximate Weight = 2.48 lbs.
- Material: 7050-T7451 Aluminum Plate per AMS 4050

### AIRCRAFT APPLICATION

Boeing 737-600/700/700C/800/900/900ER/  
MAX 8

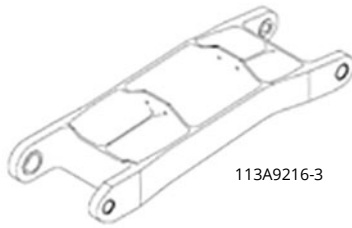


113A9104-4

# 27: FLIGHT CONTROLS

## ATTACH BEAM - POSITIONS #2 and #7

ATA Chapter: 27-51



113A9216-3

### PRODUCT DESCRIPTION

Component of the Flap Track Fairing Module that serves as an aft attach point to hold the corresponding Flap Track Fairing in place

P/N: 113A9216-3ATSMRO holds #2

P/N: 113A9216-4ATSMRO holds #7

### ATS PART NUMBER

113A9216-3ATSMRO

113A9216-4ATSMRO

### OEM PART NUMBER

113A9216-3

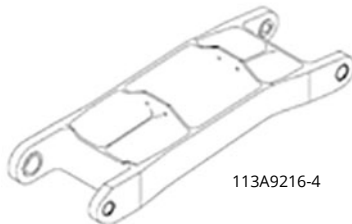
113A9216-4

### TECHNICAL SPECIFICATIONS

- FAA PMA PQ5315NM, Supplement 41
- Equivalent in fit, form and function to OEM assembly
- 15.70-inches-long x 5.17-inches-wide x 2.60-inches-deep.
- Approximate Weight = 3.40 lbs.
- Material: 7050-T7451 Aluminum Plate per AMS 4050

### AIRCRAFT APPLICATION

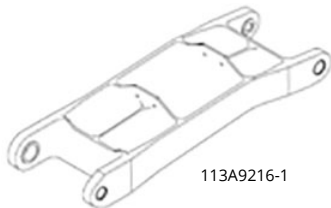
Boeing 737-600/700/700C/800/900/900ER/  
MAX 8



113A9216-4

## BEAM ASSEMBLY - POSITIONS #2 and #7

ATA Chapter: 27-51



113A9216-1

### PRODUCT DESCRIPTION

Component of the Flap Track Fairing Module that serves as an aft attach point to hold the corresponding Flap Track Fairing in place

P/N: 113A9216-1ATSMRO holds #2

P/N: 113A9216-2ATSMRO holds #7

### ATS PART NUMBER

113A9216-1ATSMRO

113A9216-2ATSMRO

### OEM PART NUMBER

113A9216-1

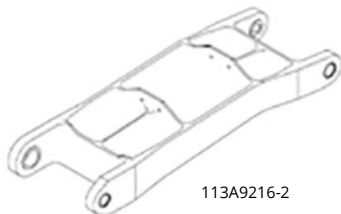
113A9216-2

### TECHNICAL SPECIFICATIONS

- FAA PMA PQ5315NM, Supplement 41
- Equivalent in fit, form and function to OEM assembly
- 15.70-inches-long x 5.17-inches-wide x 2.60-inches-deep.
- Approximate Weight = 3.40 lbs.
- Material: 7050-T7451 Aluminum Plate per AMS 4050

### AIRCRAFT APPLICATION

Boeing 737-600/700/700C/800/900/900ER/  
MAX 8

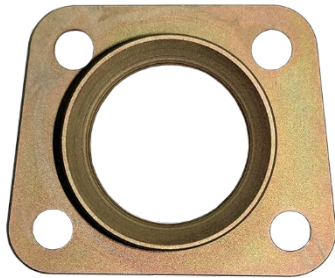


113A9216-2

# 27: FLIGHT CONTROLS

## BUSHING - ADJUST LINK

ATA Chapter: 27-51, 57-53



### PRODUCT DESCRIPTION

Component of the Flap Track Fairing Module that serves as an aft attach point to hold the #1/#2/#3/#6/#7/#8 Flap Track Fairing in place

### ATS PART NUMBER

113A9120-1ATSMRO

### OEM PART NUMBER

113A9120-1

### TECHNICAL SPECIFICATIONS

- Bushing - Adjust Link (P/N: 113A9120-1ATSMRO) is a detail that feeds into Adjust Link Assembly (P/N: 113A9305-5ATSMRO, Supplement 24)

### AIRCRAFT APPLICATION

Boeing 737-600/700/800/900/900ER/MAX 8

## BUSHING - POSITIONS #1, #2, #3, #6, #7 and #8

ATA Chapter: 27-51



113A9309-1



113A9209-1

### PRODUCT DESCRIPTION

Component of the Flap Track Fairing Module that serves as an aft attach point to hold the corresponding Flap Track Fairings in place

P/N: 113A9309-1ATSMRO holds #3 and #6

P/N: 113A9209-1ATSMRO holds #1, #2, #7 and #8

### ATS PART NUMBER

113A9309-1ATSMRO

113A9209-1ATSMRO

### OEM PART NUMBER

113A9309-1

113A9209-1

### TECHNICAL SPECIFICATIONS

- FAA PMA PQ5315NM, Supplement 43
- Equivalent in fit, form and function to OEM assembly
- Material: TI-6AL-4V Annealed Bar per AMS6931 OR MIL-T-9047

#### 113A9309-1:

- 9.46-inches-long x 0.686 inches diameter
- Approximate Weight = 0.26 lbs.

#### 113A9209-1:

- 8.72-inches-long x 0.874 inches diameter
- Approximate Weight = 0.41 lbs.

### AIRCRAFT APPLICATION

Boeing 737-600/700/700C/800/900/900ER/MAX 8

## DRIVE ROD ASSEMBLY and ADJUST ROD ASSEMBLY

ATA Chapter: 27-51



113A9306-4



113A9307-4

### PRODUCT DESCRIPTION

Components of the Flap Track Fairing Module that serves as an aft attach point to hold Flap Track Fairing in place

Both Drive Rod Assembly (P/N: 113A9306-4ATSMRO) and Adjust Rod Assembly (P/N: 113A9307-4ATSMRO) hold #3 and #6

### ATS PART NUMBER

113A9306-4ATSMRO

113A9307-4ATSMRO

### OEM PART NUMBER

113A9306-4

113A9307-4

### TECHNICAL SPECIFICATIONS

- FAA PMA PQ5315NM, Supplement 51
- Equivalent in fit, form and function to OEM assembly

#### 113A9306-4:

- 9.76 inches long x 0.675 inches diameter
- Approximate Weight = 0.44 lbs.

#### 113A9307-4:

- 10.89 inches long x 0.675 inches diameter
- Approximate Weight = 0.46 lbs.

### AIRCRAFT APPLICATION

Boeing 737-600/700/700C/800/900/900ER/MAX 8/MAX 9

# 27: FLIGHT CONTROLS

## ELASTOMERIC BUSHING

ATA Chapter: 27-51



### PRODUCT DESCRIPTION

Provides vibration dampening within the Fitting Sub-Assemblies - components of the trailing edge flap system

### ATS PART NUMBER

SY10670ATSMRO

### OEM PART NUMBER

SY10670

### TECHNICAL SPECIFICATIONS

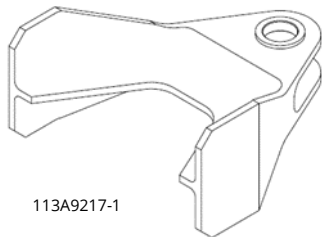
- FAA PMA PQ5315NM, Supplement 50.
- Equivalent in fit, form and function to OEM assembly
- 0.63" x 0.91" (1" Round Stock)
- Approximate Weight = 0.04 lbs.
- Material: 17-4PH H900 per AMS5643

### AIRCRAFT APPLICATION

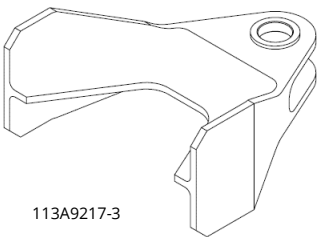
Boeing 737-600/700/700C/800/900/900ER/  
MAX 8

## FITTING ASSEMBLY - POSITIONS #2 and #7

ATA Chapter: 27-51



113A9217-1



113A9217-3

### PRODUCT DESCRIPTION

Component of the Flap Track Fairing Module that serves as an aft attach point to hold the #2 and #7 Flap Track Fairing in place

### ATS PART NUMBER

113A9217-1ATSMRO  
113A9217-3ATSMRO

### OEM PART NUMBER

113A9217-1  
113A9217-3

### TECHNICAL SPECIFICATIONS

- FAA PMA PQ5315NM, Supplement 41
- Equivalent in fit, form and function to OEM assembly
- 4.37-inches-long x 4.24-inches-wide x 2.10-inches-deep.
- Material: 7050-T7451 Aluminum Plate per AMS 4050

### AIRCRAFT APPLICATION

Boeing 737-600/700/700C/800/900/900ER/  
MAX 8

# 27: FLIGHT CONTROLS

## FITTING SUB-ASSEMBLY

ATA Chapter: 27-51



### PRODUCT DESCRIPTION

Serves as an attach point for the forward fairing section, connecting it to the mechanism on the interior of the fairing.

### ATS PART NUMBER

113A1350-3ATSMRO

### OEM PART NUMBER

113A1350-3

### TECHNICAL SPECIFICATIONS

- FAA PMA PQ5315NM, Supplement 36.
- Equivalent in fit, form and function to OEM assembly
- 6.7 inches long x 3.5-inch-wide x 2.0-inches-deep
- Approximate Weight = 0.45 lbs.
- Material: 7050-T7451 Aluminum Plate per AMS4050

### AIRCRAFT APPLICATION

Boeing 737-600/700/700C/800/900/900ER/  
MAX 8

## GIMBAL - POSITIONS #1, #2, #3, #6, #7 and #8

ATA Chapter: 27-51



### PRODUCT DESCRIPTION

Part of the gimbal that moves the trailing edge flap surface. The gimbal connects the ballscrew nut and moves as the ballscrew turns. Two bushings join the ballscrew nut and gimbal

### ATS PART NUMBER

ADU18-8ATSMRO

### OEM PART NUMBER

ADU18-8

### TECHNICAL SPECIFICATIONS

- FAA PMA PQ5315NM, Supplement 49
- Equivalent in fit, form and function to OEM assembly
- 1.5" x 1.0"
- Approximate Weight = 0.24 lbs.
- Material: 15-5PH CRES Bar per AMS5659

### AIRCRAFT APPLICATION

Boeing 737-600/700/700C/800/900/900ER/  
MAX8/MAX9  
Boeing 757-200/200PF/200CB/300



# 27: FLIGHT CONTROLS

## PIVOT BOLT – #1, #2, #3, #6, #7 and #8

ATA Chapter: 27-51



### PRODUCT DESCRIPTION

Component of the Flap Track Fairing Module that serves as an aft attach point to hold the corresponding Flap Track Fairing in place +D27

### ATS PART NUMBER

113A9308-1ATSMRO  
113A9208-1ATSMRO

### OEM PART NUMBER

113A9308-1  
113A9208-1

### TECHNICAL SPECIFICATIONS

- FAA PMA PQ5315NM, Supplement 43
- Equivalent in fit, form and function to OEM assembly
- Material: TI-6AL-4V Annealed Bar per AMS6931 OR MIL-T-9047

#### 113A9308-1:

- 11.22 inches long x 0.498 inches diameter.
- Approximate Weight = 0.37 lbs.

#### 113A9208-1:

- 11.06 inches long x 0.623 inches diameter.
- Approximate Weight = 0.56 lbs.

### AIRCRAFT APPLICATION

Boeing 737-600/700/700C/800/900/900ER/  
MAX 8

## RETAINER

ATA Chapter: 27-51, 57-53



### PRODUCT DESCRIPTION

Component of the Flap Track Fairing Module that serves as an aft attach point to hold the #1/#2/#3/#6/#7/#8 Flap Track Fairing in place

### ATS PART NUMBER

69B14136-2ATSMRO

### OEM PART NUMBER

69B14136-2

### TECHNICAL SPECIFICATIONS

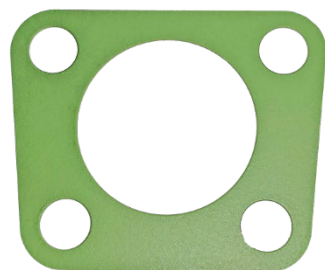
- Retainer (P/N: 69B14136-2ATSMRO) is a detail that feeds into Adjust Link Assembly (P/N: 113A9305-5ATSMRO, Supplement 24)

### AIRCRAFT APPLICATION

Boeing 737-600/700/800/900/900ER/MAX 8

## SHIM - LAMINATED

ATA Chapter: 27-51, 57-53



### PRODUCT DESCRIPTION

Component of the Flap Track Fairing Module that serves as an aft attach point to hold the #1/#2/#3/#6/#7/#8 Flap Track Fairing in place

### ATS PART NUMBER

69B14136-3ATSMRO

### OEM PART NUMBER

69B14136-3

### TECHNICAL SPECIFICATIONS

- Shim - Laminated (P/N: 69B14136-3ATSMRO) is a detail that feeds into Adjust Link Assembly (P/N: 113A9305-5ATSMRO, Supplement 24)

### AIRCRAFT APPLICATION

Boeing 737-600/700/800/900/900ER/MAX 8

# 27: FLIGHT CONTROLS

## HYDRAULIC FUSE HOUSING

ATA Chapter: 27-81 / 29-11 / 32-32 / 32-33 / 78-34



7-2882-5

### PRODUCT DESCRIPTION

Precision machined tube that houses a piston, metering cone, metering body, piston spring, metering cylinder and other parts to satisfy operation parameters indicated for its application

Housing typically replaced during overhaul or rebuild of Flow Rate Fuse Assembly. Each fuse configuration has been designed to accommodate specific dimensional, weight and hydraulic interface requirements

### ATS PART NUMBER

7-2882-4ATSMRO  
7-2882-5ATSMRO  
7-2882-6ATSMRO

### OEM PART NUMBER

7-2882-4  
7-2882-5  
7-2882-6

### TECHNICAL SPECIFICATIONS

- FAA PMA PQ5315NM, Supplement 1
- Equivalent in fit, form and function to OEM assembly
- **-4:** 4.45-inch-Long x 1.75-inch diameter
- **-5:** 5.17-inch-Long x 1.75-inch diameter
- **-6:** 5.78-inch-Long x 1.75-inch diameter
- Approximate Weight = 0.41 lbs.
- Material: 7075-T73 or 7075-T7351 per SAE AMS-QQ-A-225/9

### AIRCRAFT APPLICATION

Boeing 737-  
300/400/500/600/700/700C/800/900/  
900ER

© 2021 Aviation Technical Services – 7/2021



Trusted Partners  
Supporting Flight