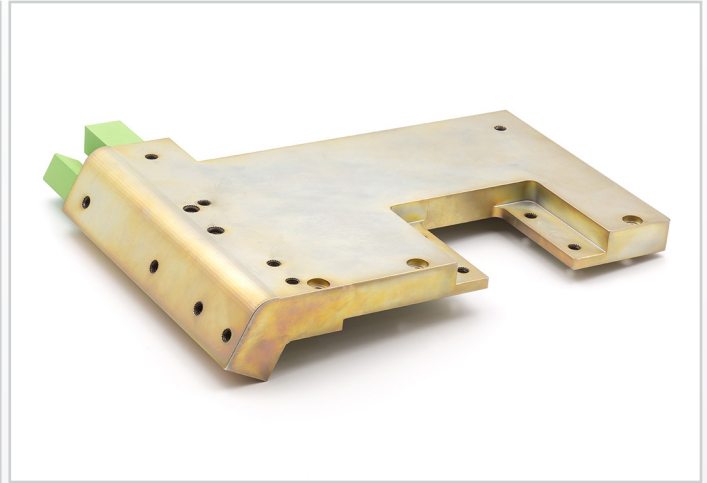
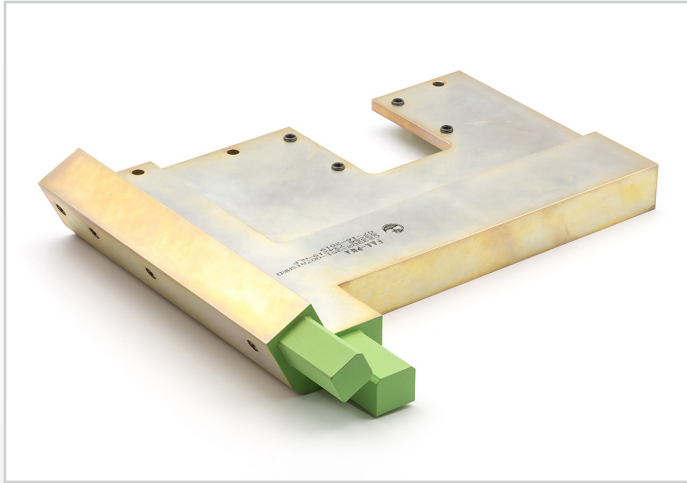


ATS (Aviation Technical Services) specializes in making the MRO process better through reducing span times, increasing mechanic efficiency, and lowering overall costs through maintenance prevention strategies including targeted delivery of PMA parts and STC offerings.



The Attachment Block Assembly – Lavatory B is part of a suite of PMAs engineered by ATS. Our PMAs reduce cost, part leadtime, and aircraft time on the ground, quickly delivering financial and operational performance improvements to our customers.

### PRODUCT DESCRIPTION

Part attaches Rumbold Lavatory B module to the interior cabin floor (forward inboard attachment block assembly)

### ATS PRODUCT REFERENCE

C23302-351-007ATSMRO

### OEM PART NUMBER

C23302-351-007

### ATA CHAPTER

25-40-00

### TECHNICAL SPECIFICATIONS

- FAA PMA PQ513NM, Supplement 16
- Manufactured from 17-4PH for superior strength and comparable corrosion resistance
- Cadmium plated with a corrosion-inhibiting epoxy primer on all applicable mating surfaces
- Stainless steel for corrosion resistance
- Per-lavatory kit option

### AIRCRAFT APPLICATION

Boeing 737-300/500/600/700/700C