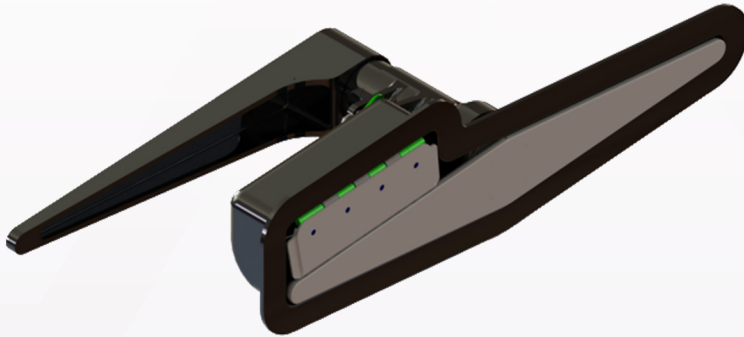


ATS (Aviation Technical Services) specializes in making the MRO process better through reducing span times, increasing mechanic efficiency, and lowering overall costs through maintenance prevention strategies including targeted delivery of PMA parts and STC offerings.



The EverLatch™ Cargo Door Latch by ATS is a cost-effective solution to a long-standing cargo door latch problem where operators experience fuselage skin and cargo door housing damage from sheered off nylon bumpers. The EverLatch is easy to install and is currently in service with airlines operating Boeing 737NGs.

### CUSTOMER BENEFITS

- Innovative design eliminates door skin and latch housing damage
- Improves service life of the external door cover
- Improves performance and reliability
- Fully sealed handle maintains aerodynamics
- Part can be replaced in minutes without special tooling, minimizing maintenance costs and aircraft downtime

### OEM PART NUMBER

H414-29 FWD – One Way Replace to H414K3885 FWD  
 H4143899 FWD – One Way Replace to H414-67 FWD  
 H414-53 AFT – One Way Replace to H414-69 AFT  
 H414-31 AFT

### ATS PRODUCT REFERENCE

718932-100-501 (AFT)  
 718932-111-501 (FWD)

### TECHNICAL SPECIFICATIONS

- FAA Certified Design under STC # ST02525SE, PMA obtained
- Direct replacement for OEM part at a reduced cost

### AIRCRAFT APPLICATION

Boeing 737NG  
 -600, -700, -700C, -800, -900ER, -BBJ

### ATA CHAPTER

Doors 52-30-00