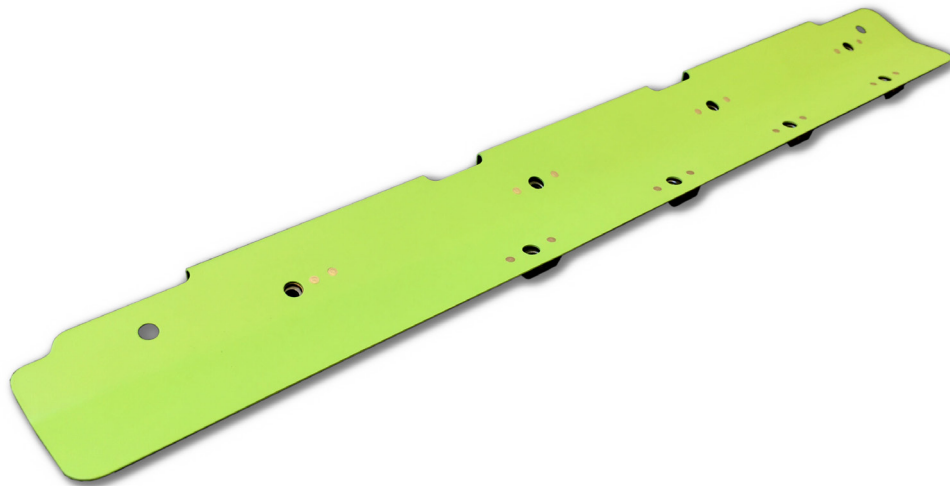


Shield Assembly

OEM Part Number 143A8126U21, 143A8126U31	ATA Chapter 53-30-15
Description Attachment points for floor and sidewall panels of the Forward Cargo Bay.	
Applicable Aircraft 143A8126U21: Boeing 737-700/700C/800/900/900ER/MAX 8/MAX 9 143A8126U31: Boeing 737-700/700C	



PRODUCT HIGHLIGHTS:

- Located forward and aft of Forward Cargo Bay door opening
- Equivalent in fit, form and function to OEM assembly

TECHNICAL SPECIFICATIONS:

- FAA PMA PQ5315NM, Supplement 34
- 143A8126U21 installs forward of the forward cargo bay door; 143A8126U31 installs aft