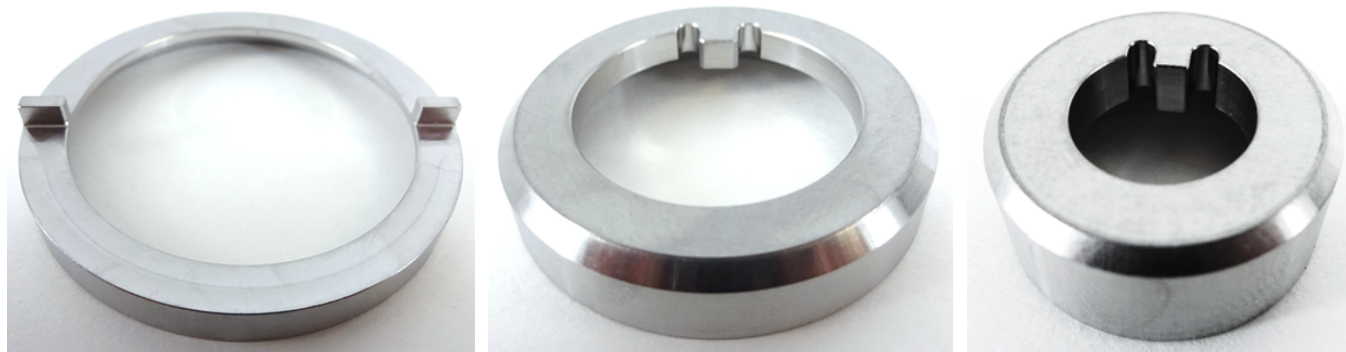


## Cup Washers

<b>ATS P/N</b>	734-17378ATS 734-17379ATS 734-17382ATS	<b>Description</b>	Lock washer keeps respective threaded component from backing off during service.
<b>OEM P/N</b>	734-17378 734-17379 734-17382	<b>ATA Chapter</b>	32
<b>Product Summary</b>	1		
<b>Aircraft</b>	Boeing 777-200/300		



### PRODUCT HIGHLIGHTS:

- Equivalent to OEM part at reduced cost
- Passes all test and inspections set forth in relevant CMM

### TECHNICAL SPECIFICATIONS:

- Made from 15-5 PH H1025 Stainless Steel
- Tested for Proof Pressure and Ultimate Pressure against OEM data